



# **Enabler Test Specification for BCAST 1.0**

## **Candidate Version 1.0 – 17 Nov 2008**

---

**Open Mobile Alliance**  
OMA-ETS-BCAST\_CON\_Client-V1\_0-20081117-C

Use of this document is subject to all of the terms and conditions of the Use Agreement located at <http://www.openmobilealliance.org/UseAgreement.html>.

Unless this document is clearly designated as an approved specification, this document is a work in process, is not an approved Open Mobile Alliance™ specification, and is subject to revision or removal without notice.

You may use this document or any part of the document for internal or educational purposes only, provided you do not modify, edit or take out of context the information in this document in any manner. Information contained in this document may be used, at your sole risk, for any purposes. You may not use this document in any other manner without the prior written permission of the Open Mobile Alliance. The Open Mobile Alliance authorizes you to copy this document, provided that you retain all copyright and other proprietary notices contained in the original materials on any copies of the materials and that you comply strictly with these terms. This copyright permission does not constitute an endorsement of the products or services. The Open Mobile Alliance assumes no responsibility for errors or omissions in this document.

Each Open Mobile Alliance member has agreed to use reasonable endeavors to inform the Open Mobile Alliance in a timely manner of Essential IPR as it becomes aware that the Essential IPR is related to the prepared or published specification. However, the members do not have an obligation to conduct IPR searches. The declared Essential IPR is publicly available to members and non-members of the Open Mobile Alliance and may be found on the “OMA IPR Declarations” list at <http://www.openmobilealliance.org/ipr.html>. The Open Mobile Alliance has not conducted an independent IPR review of this document and the information contained herein, and makes no representations or warranties regarding third party IPR, including without limitation patents, copyrights or trade secret rights. This document may contain inventions for which you must obtain licenses from third parties before making, using or selling the inventions. Defined terms above are set forth in the schedule to the Open Mobile Alliance Application Form.

NO REPRESENTATIONS OR WARRANTIES (WHETHER EXPRESS OR IMPLIED) ARE MADE BY THE OPEN MOBILE ALLIANCE OR ANY OPEN MOBILE ALLIANCE MEMBER OR ITS AFFILIATES REGARDING ANY OF THE IPR'S REPRESENTED ON THE “OMA IPR DECLARATIONS” LIST, INCLUDING, BUT NOT LIMITED TO THE ACCURACY, COMPLETENESS, VALIDITY OR RELEVANCE OF THE INFORMATION OR WHETHER OR NOT SUCH RIGHTS ARE ESSENTIAL OR NON-ESSENTIAL.

THE OPEN MOBILE ALLIANCE IS NOT LIABLE FOR AND HEREBY DISCLAIMS ANY DIRECT, INDIRECT, PUNITIVE, SPECIAL, INCIDENTAL, CONSEQUENTIAL, OR EXEMPLARY DAMAGES ARISING OUT OF OR IN CONNECTION WITH THE USE OF DOCUMENTS AND THE INFORMATION CONTAINED IN THE DOCUMENTS.

© 2008 Open Mobile Alliance Ltd. All Rights Reserved.

Used with the permission of the Open Mobile Alliance Ltd. under the terms set forth above.

# Contents

<b>1. SCOPE</b> .....	<b>5</b>
<b>2. REFERENCES</b> .....	<b>6</b>
<b>2.1 NORMATIVE REFERENCES</b> .....	<b>6</b>
<b>2.2 INFORMATIVE REFERENCES</b> .....	<b>6</b>
<b>3. TERMINOLOGY AND CONVENTIONS</b> .....	<b>8</b>
<b>3.1 CONVENTIONS</b> .....	<b>8</b>
<b>3.2 DEFINITIONS</b> .....	<b>8</b>
<b>3.3 ABBREVIATIONS</b> .....	<b>9</b>
<b>4. INTRODUCTION</b> .....	<b>12</b>
<b>5. CLIENT CONFORMANCE TEST CASES</b> .....	<b>13</b>
<b>5.1 SERVICE GUIDE</b> .....	<b>13</b>
5.1.1 Service Guide update via broadcast channel (same fragment id, higher version number).....	13
5.1.2 Service Guide update via broadcast channel (same fragment id, lower version number).....	15
5.1.3 Service Guide Update with additional fragments via broadcast channel .....	17
5.1.4 GZIP compression of Service Guide Delivery Unit on broadcast channel .....	19
5.1.5 Service provisioning with Content hierarchy.....	20
5.1.6 Service guide with Preview Data via broadcast channel.....	22
5.1.7 Service Guide with dual audio streams via broadcast channel.....	24
5.1.8 Service Guide update via interaction channel (same fragment id, higher version number).....	26
5.1.9 Service Guide update via interaction channel (same fragment id, lower version number).....	28
5.1.10 Service Guide Update with additional fragments via interaction channel .....	30
5.1.11 GZIP compression of Service Guide Delivery Unit on interaction channel .....	33
5.1.12 Service provisioning with Content hierarchy via interaction channel.....	34
5.1.13 Service guide with Preview Data via interaction channel.....	36
5.1.14 Service Guide with dual audio streams via interaction channel.....	37
5.1.15 Service Guide discovery via broadcast channel.....	38
5.1.16 Service Guide discovery via interaction channel (optional) .....	39
<b>5.2 FILE AND STREAM DISTRIBUTION</b> .....	<b>41</b>
5.2.1 File Distribution over Broadcast channel.....	41
5.2.1.1 Support of ALC protocol and delivery of meta-data in the Service Guide .....	41
5.2.1.2 Support of in-band delivery of meta-data and FLUTE (optional).....	42
5.2.2 Support the delivery using HTTP over the Interaction Channel (optional) .....	43
5.2.3 Support of FEC RAPTOR (optional).....	44
5.2.4 File Versioning handling (optional).....	45
5.2.5 Support of the post-delivery repair of files .....	47
5.2.6 Support of reception report (optional).....	48
5.2.7 Support of Flute Session Setup and Control with RTSP (optional) .....	49
5.2.8 Support of RTP for stream distribution over the broadcast channel .....	51
5.2.9 Support of RTP for stream distribution over the interaction channel using SDP (optional).....	52
5.2.10 Support of RTP for stream distribution over the interaction channel using HTTP to get the stream description from the Access Fragment (optional) .....	53
5.2.11 Support of streaming associated procedure (optional).....	54
<b>5.3 SERVICE INTERACTION</b> .....	<b>55</b>
5.3.1 Service guide with XHTML interactivity document via broadcast channel (optional).....	55
5.3.2 Service guide with SMS interactivity document via broadcast channel (optional).....	57
5.3.3 Service guide with MMS interactivity document via broadcast channel (optional) .....	58
<b>5.4 TERMINAL PROVISIONING</b> .....	<b>61</b>
<b>5.5 MOBILITY AND ROAMING</b> .....	<b>62</b>
5.5.1 Availability of Roaming and Showing SG of visited service provider (optional) .....	62
<b>5.6 IPDC OVER DVB-H ADAPTATION</b> .....	<b>64</b>
<b>5.7 3GPP MBMS ADAPTATION</b> .....	<b>65</b>
<b>5.8 3GPP2 BCMCS ADAPTATION</b> .....	<b>66</b>
<b>5.9 SERVICE PROVISIONING AND ENCRYPTION</b> .....	<b>67</b>

- 5.9.1 Smartcard profile and SRTP encryption (optional)..... 67
  - 5.9.1.1 Registration..... 67
  - 5.9.1.2 GBA-U Bootstrapping USIM ..... 68
  - 5.9.1.3 Purchasing information ..... 69
  - 5.9.1.4 Purchasing Service ..... 71
  - 5.9.1.5 Pull LTKM delivery..... 72
  - 5.9.1.6 STKM delivery and usage ..... 72
  - 5.9.1.7 Deregistration..... 73
  - 5.9.1.8 Smartcard-based Parental control support..... 74
- 5.9.2 Smartcard Profile and IPsec encryption (optional)..... 75
  - 5.9.2.1 Registration..... 75
  - 5.9.2.2 GBA-U Bootstrapping USIM ..... 76
  - 5.9.2.3 Purchasing Information ..... 78
  - 5.9.2.4 Purchasing Service ..... 79
  - 5.9.2.5 Pull LTKM delivery..... 80
  - 5.9.2.6 STKM delivery and usage ..... 80
  - 5.9.2.7 Deregistration..... 81
  - 5.9.2.8 Smartcard-based Parental control support..... 82
- 5.9.3 Smartcard Profile and Ismacryp encryption (optional) ..... 83
  - 5.9.3.1 Registration..... 83
  - 5.9.3.2 GBA-U Bootstrapping USIM ..... 84
  - 5.9.3.3 Purchasing Information ..... 86
  - 5.9.3.4 Purchasing Service ..... 87
  - 5.9.3.5 Pull LTKM delivery..... 88
  - 5.9.3.6 STKM delivery and usage ..... 88
  - 5.9.3.7 Deregistration..... 89
  - 5.9.3.8 Smartcard-based Parental control support..... 90
- 5.9.4 DRM Profile and IPsec encryption via broadcast channel (optional)..... 91
- 5.9.5 DRM Profile and SRTP encryption via broadcast channel (optional) ..... 93
- 5.9.6 DRM Profile and ISMACryp encryption via broadcast channel (optional) ..... 95
- APPENDIX A. CHANGE HISTORY (INFORMATIVE)..... 98**
  - A.1 APPROVED VERSION HISTORY ..... 98**
  - A.2 DRAFT/CANDIDATE VERSION 1.0 HISTORY ..... 98**
- APPENDIX B. STRUCTURE OF THE TEST SERVICE GUIDE ..... 100**
- APPENDIX C. ADAPTATION TEST COVERAGE (INFORMATIVE)..... 101**
  - C.1 CONFORMANCE TEST COVERAGE FOR ADAPTATION SCR's..... 101**
- APPENDIX D. TEST ALGORITHM AND PARAMETERS (NORMATIVE) ..... 109**
  - D.1 DEFAULT ALGORITHM ..... 109**
  - D.2 DEFAULT PARAMETER ..... 109**

## Figures

- Figure 1: Structure of the Service Guide ..... 100**

# 1. Scope

This document describes test cases for "Mobile Broadcast Services" according to Open Mobile Alliance™, OMA-TS-BCAST\_Services-V1\_0, <http://www.openmobilealliance.org/>.

The test cases are split in two categories, conformance and interoperability test cases.

The conformance test cases are aimed to verify the adherence to normative requirements described in the technical specifications.

The interoperability test cases are aimed to verify that implementations of the specifications work satisfactory.

## 2. References

### 2.1 Normative References

- [BCAST10 –MBMS Adaptation] "Broadcast Distribution System Adaptation – 3GPP/MBMS", Open Mobile Alliance™, OMA-TS-BCAST\_MBMS\_Adaptation-V1\_0, URL:<http://www.openmobilealliance.org/>
- [BCAST10 – Distribution] "File and Stream Distribution for Mobile Broadcast Services ", Version 1.0, Open Mobile Alliance™, OMA-TS-BCAST\_Distribution-V1\_0, URL:<http://www.openmobilealliance.org/>
- [BCAST10 –ESG] "Service Guide for Mobile Broadcast Services", Version 1.0, Open Mobile Alliance™, OMA-TS-BCAST\_Service\_Guide-V1\_0, URL:<http://www.openmobilealliance.org>
- [BCAST10 -Services] "Mobile Broadcast Services", Open Mobile Alliance™, Version 1.0, OMA-TS-BCAST\_Services-V1\_0, URL:<http://www.openmobilealliance.org/>
- [BCAST10–BCMCS Adaptation] "Broadcast Distribution System Adaptation – 3GPP2/BCMCS", Version 1.0, Open Mobile Alliance™, OMA-TS-BCAST\_BCMCS\_Adaptation-V1\_0, URL:<http://www.openmobilealliance.org/>
- [BCAST10–DVB-H-IPDC–Adaptation] "Broadcast Distribution System Adaptation – IPDC over DVB-H", Version 1.0, Open Mobile Alliance™, OMA-TS-BCAST\_DVB\_Adaptation-V1\_0, URL:<http://www.openmobilealliance.org/>
- [BCAST10-ERELED] "Enabler Release Definition for Mobile Broadcast Services", Version 1.0, Open Mobile Alliance™, OMA-ERELED-BCAST-V1\_0, URL:<http://www.openmobilealliance.org/>
- [BCAST10-ETR] "Enabler Test Requirements for Mobile Broadcast Services" Version 1.0, Open Mobile Alliance™, OMA-ETR-BCAST-V1\_0, URL:<http://www.openmobilealliance.org/>
- [BCAST10– ServContProt] "Service and Content Protection for Mobile Broadcast Services", Version 1.0, Open Mobile Alliance™, OMA-TS-BCAST\_SvcCntProtection-V1\_0, URL:<http://www.openmobilealliance.org/>
- [BCAST10-ATS] "Abstract Test Suite for Mobile Broadcast Services", Version 1.0, Open Mobile Alliance™, OMA-ETS-BCAST\_ATS-V1\_0, URL:<http://www.openmobilealliance.org/>
- [DRM20-Broadcast-Extensions] "OMA DRM v2.0 Extensions for Broadcast Support", Version 1.0, Open Mobile Alliance™, OMA-TS-DRM-XBS-V1\_0, URL:<http://www.openmobilealliance.org/>
- [DRM-v2.0] "DRM Specification V2.0", Open Mobile Alliance™, Version 2.0, OMA-DRM-DRM-V2\_0, URL:<http://www.openmobilealliance.org/>
- [IOPPROC] "OMA Interoperability Policy and Process", Version 1.6, Open Mobile Alliance™, OMA-ORG-IOP\_Process-V1\_6, URL:<http://www.openmobilealliance.org/>
- [OMA DM] "Enabler Release Definition for OMA Device Management", Version 1.2, Open Mobile Alliance™, OMA-ERELED-DM-V1\_2, URL:<http://www.openmobilealliance.org/>
- [RFC2119] "Key words for use in RFCs to Indicate Requirement Levels", S. Bradner, March 1997, URL:<http://www.ietf.org/rfc/rfc2119.txt>
- [3GPP 34.108 v7] "Common test environments for User Equipment (UE); Conformance testing", 3rd Generation Partnership Project; Technical Specification Group Radio Access Network; 3GPP TS 34.108, URL:<http://www.3gpp.org/>

### 2.2 Informative References

- [BCAST10-Architecture] "Mobile Broadcast Services Architecture", Version 1.0, Open Mobile Alliance™, OMA-AD-BCAST-V1\_0, URL:<http://www.openmobilealliance.org/>

[OMADICT]

“Dictionary for OMA Specifications”, Version 2.7, Open Mobile Alliance™. OMA-ORG-Dictionary-V2\_7, , URL:<http://www.openmobilealliance.org/>

## 3. Terminology and Conventions

### 3.1 Conventions

The key words “MUST”, “MUST NOT”, “REQUIRED”, “SHALL”, “SHALL NOT”, “SHOULD”, “SHOULD NOT”, “RECOMMENDED”, “MAY”, and “OPTIONAL” in this document are to be interpreted as described in [RFC2119].

All sections and appendixes, except “Scope”, are normative, unless they are explicitly indicated to be informative.

The following numbering scheme is used:

**xxx-y.z-con-number** where:

xxx	Name of enabler, e.g. MMS or Browsing
y.z	Version of enabler release, e.g. 1.2 or 1.2.1
'con'	Indicating this test is a conformance test case
number	Leap number for the test case

and

**xxx-y.z-int-number** where:

xxx	Name of enabler, e.g. MMS or Browsing
y.z	Version of enabler release, e.g. 1.2 or 1.2.1
'int'	Indicating this test is a interoperability test case
number	Leap number for the test case

### 3.2 Definitions

<b>Broadcast Roaming</b>	Broadcast Roaming is the ability of a user to receive broadcast services from a Mobile Broadcast Service Provider different from the Home Mobile Broadcast Service Provider with which the user has a contractual relationship.
<b>Broadcast Service</b>	<p>A Broadcast Service is a “content package” suitable for simultaneous distribution to many recipients (potentially) without knowing the recipient. Either each receiver has similar receiving devices or the content package includes information, which allows the client to process the content according to his current conditions.</p> <p>Examples of Broadcast Services are:</p> <ul style="list-style-type: none"> <li>• pure Broadcast Services: <ul style="list-style-type: none"> <li>○ mobile TV</li> <li>○ mobile newspaper</li> <li>○ mobile file downloading (clips, games, SW upgrades, other applications, applications)</li> </ul> </li> <li>• combined broadcast/interactive Broadcast Services <ul style="list-style-type: none"> <li>○ mobile TV for file downloading with voting</li> <li>○ betting Broadcast Services</li> <li>○ auction Broadcast Services</li> <li>○ trading Broadcast Services</li> </ul> </li> </ul>
<b>Broadcast Service Area</b>	The geographical or logical area in which a Broadcast Service is distributed.
<b>Purchase Item</b>	A purchase item groups one or multiple services or pieces of content that an end-user can purchase or subscribe to as a whole. [BCAST10-ESG].
<b>Rights Issuer</b>	An entity that issues Rights Objects to OMA DRM Conformant Devices. [DRMDRM-v2.0]



<b>Rights Object</b>	A collection of Permissions, Constraints, and other attributes which define under what circumstances access is granted to, and what usages are defined for, DRM Content. All OMA DRM Conformant Devices must adhere to the Rights Object associated with DRM Content. [DRMDRM-v2.0]
<b>Test-Fest</b>	Multi-lateral interoperability testing event
<b>User ID</b>	A unique ID that can be used to identify the user in both the Home Service Provider and Visited Service Provider BCAST service area. An example is the 3GPP/3GPP2 IMSI (International Mobile Subscriber Identity) as specified in 3GPP TS 23.003 and 3GPP2 C.S0005 (for the case the Broadcast Service Provider is a cellular mobile operator).

### 3.3 Abbreviations

<b>ATSC</b>	Advanced Television Systems Committee
<b>BCMCS</b>	Broadcast/Multicast Services
<b>BDS</b>	Broadcast Distribution System
<b>BDS-SD</b>	BDS Service Distribution
<b>BSA</b>	BCAST Service Application
<b>BSD/A</b>	BCAST Service Distribution and Adaptation
<b>BSI-C</b>	BCAST Service Interaction - Client Component
<b>BSI-G</b>	BCAST Service Interaction - Generic Component
<b>BSM</b>	BCAST Subscription Management
<b>BSP</b>	Broadcast Service Provisioning
<b>BSP-C</b>	BCAST Service Provisioning - Client Component
<b>BSP-M</b>	BCAST Service Provisioning - Management Component
<b>CC</b>	Content Creation
<b>Cell ID</b>	Mobile network cell identification
<b>CID</b>	Content Identification
<b>CODEC</b>	Compressor/Decompressor
<b>CP</b>	Content Protection
<b>DRM RO</b>	Digital Rights Management Rights Object
<b>DT</b>	Date Time
<b>DVB-H</b>	Digital Video Broadcasting – Handhelds
<b>DVB-T</b>	Digital Video Broadcasting – Terrestrial
<b>FA</b>	File Application Component
<b>FD</b>	File Delivery Component
<b>FD-C</b>	File Delivery - Client Component
<b>FLUTE</b>	File Delivery over Unidirectional Transport
<b>IMS</b>	IP Multimedia Subsystem
<b>IN</b>	Interaction Network

<b>IP</b>	Internet Protocol
<b>IPSec</b>	IP Security
<b>ISMACryp</b>	ISMA Encryption and Authentication specification
<b>MBMS</b>	Multimedia Broadcast/Multicast Service
<b>MMS</b>	Multi-media Messaging
<b>MPEG2-TS</b>	Motion Pictures Expert Group 2 – Transport Stream
<b>MPEG-4</b>	Motion Pictures Expert Group 4
<b>MSISDN</b>	Mobile Subscriber ISDN number
<b>NT</b>	Notification Function
<b>NTC</b>	Notification Client Component
<b>NTDA</b>	Notification Distribution
<b>NTE</b>	Notification Event Component
<b>NTG</b>	Notification Generation Component
<b>OCSP</b>	Online Certificate Status Protocol
<b>OMA</b>	Open Mobile Alliance
<b>OMA BCAST</b>	OMA Digital Mobile Broadcast enabler
<b>OMA DM</b>	OMA Device Management enabler
<b>OMA DRM</b>	OMA Digital Rights Management enabler
<b>OMA LOC</b>	OMA Location enabler
<b>PEAK</b>	Program Encryption/Authentication Key
<b>RI</b>	Rights Issuer
<b>RO</b>	Rights Object
<b>ROAP</b>	Rights Object Acquisition Protocol
<b>RTCP</b>	RTP Control Protocol
<b>RTP</b>	Real-time Transport Protocol
<b>SA</b>	Stream Application Component
<b>SD</b>	Stream Delivery Component
<b>SD-C</b>	Stream Delivery Client Component
<b>SDP</b>	Session Description Protocol
<b>SEAK</b>	Subscription Encryption/Authentication Key
<b>SG</b>	Service Guide
<b>SGA</b>	Service Guide Adaptation
<b>SGAS</b>	Service Guide Application Source
<b>SG-C</b>	Service Guide Client Component

---

<b>SGCCS</b>	Service Guide Content Creation Source
<b>SGD</b>	Service Guide Distribution
<b>SG-G</b>	Service Guide Generation
<b>SG-G/D/A</b>	The entity of Service Guide Generation, Distribution and Adaptation components
<b>SGSS</b>	Service Guide Subscription Source
<b>SI</b>	Service Interaction
<b>SMS</b>	Short Message Service
<b>SP</b>	Service Protection
<b>SRTP</b>	Secure Real-time Transport Protocol
<b>TP-C</b>	Terminal Provisioning Client component
<b>TP-M</b>	Terminal Provisioning Management component
<b>UDP</b>	User Datagram Protocol
<b>URI</b>	Universal Resource Identified
<b>VLR</b>	Visitor Location Register
<b>XML</b>	Extensible Markup Language

## 4. Introduction

The purpose of this document is to provide client conformance test cases for "Mobile Broadcast Services version 1.0".

BCAST is a complex enabler which requires tests for conformance and interoperability in a client/server scenario with different access networks.

Some features in the BCAST enabler may optionally be implemented in mobile devices. The tests associated with these optional features are marked as [Optional] in the test specification.

Terminals that support ESG delivery using both Broadcast and Interaction Channel are required to run all applicable test cases using both ESG delivery methods.

## 5. CLIENT Conformance Test Cases

### 5.1 Service Guide

#### 5.1.1 Service Guide update via broadcast channel (same fragment id, higher version number)

<b>Test Case Id</b>	BCAST-1.0-ESG-conf-101
<b>Test Object</b>	BCAST Terminal
<b>Test Purpose</b>	<p>with a terminal having received a Service Guide and listening to the broadcast Service Guide Delivery Channel.</p> <p>when the terminal receives Service Guide update containing a content fragment with same id and higher version</p> <p>then the terminal presents the information of the updated Service Guide</p>
<b>Specification Reference</b>	[BCAST10 –ESG] Section 5.4.2.1.2, 5.5 3 <sup>rd</sup> bullet item
<b>SCR Reference</b>	<p><b>Primary:</b> BCAST-SG-C-013 (M)</p> <p><b>Secondary:</b> BCAST-SG-C-002 (M), BCAST-SG-C-010 (M), BCAST-SG-C-011 (M)</p> <p>See also Appendix C.1</p>
<b>Tool</b>	BCAST conformance test tool
<b>Test code</b>	[BCAST10-ATS] TC_BCAST_ESG_CONF_101

<p><b>Preconditions</b></p>	<p>Service guide cache of terminal is erased</p> <p>Terminal is configured to listen to BCAST service guide announcements and delivery on the broadcast channel</p> <p>Access point information for service guide entry point is configured in test tool</p> <p>This test case uses the following SG fragment instantiations:</p> <p>Initial service guide:</p> <ul style="list-style-type: none"> <li>• Service fragment with Name="TvChannel"</li> <li>• Content fragment with version = "1" and Name = "Programme1" , and StartTime and EndTime elements indicating values after the time of test</li> <li>• Schedule fragment for "Programme1" content fragment with same values for startTime and endTime in the presentationWindow element</li> <li>• Access fragment "Programme1" schedule fragment</li> </ul> <p>Updated service guide:</p> <ul style="list-style-type: none"> <li>• Service fragment with Name="TvChannel"</li> <li>• Content fragment with version = "2" and Name = "Programme1-version2" , and StartTime and EndTime elements indicating values after the time of test</li> <li>• Schedule fragment for "Programme1-version2" content fragment with same values for startTime and endTime in the presentationWindow element</li> <li>• Access fragment for "Programme1-version2" schedule fragment</li> </ul> <p>Note: All the fragments are associated with the same Service fragment and are sent in the same service guide delivery.</p>
<p><b>Test Procedure</b></p>	<ul style="list-style-type: none"> <li>• Set up the test tool to produce initial BCAST service guide announcement and delivery using broadcast channel.</li> <li>• Activate the BCAST application of the terminal</li> <li>• Request from BCAST application on terminal to get the service guide (optional)</li> <li>• Browse the SG on the terminal</li> <li>• Set up the test tool to produce updated BCAST service guide announcement and delivery using broadcast channel.</li> <li>• Request from BCAST application on terminal to update the service guide (optional).</li> <li>• Browse the SG on the terminal</li> </ul>
<p><b>Pass-Criteria</b></p>	<p>The following should be visible to the end user after the initial delivery of the SG</p> <ul style="list-style-type: none"> <li>• There is a service "TvChannel" associated with a program "Programme1" as well as start and end time values (There is a "TvChannel" that contains "Programme1" scheduled from startTime to endTime)</li> </ul> <p>The following should be visible to the end user after the delivery of the update of the SG</p> <ul style="list-style-type: none"> <li>• There is a service "TvChannel" associated with a program "Programme1-version2" as well as start and end time values (There is a "TvChannel" that contains "Programme1-version2" scheduled from startTime to endTime)</li> </ul>

## 5.1.2 Service Guide update via broadcast channel (same fragment id, lower version number)

<b>Test Case Id</b>	BCAST-1.0-ESG-conf-102
<b>Test Object</b>	BCAST Terminal
<b>Test Purpose</b>	<p>with a terminal having received a Service Guide and listening to the broadcast Service Guide Delivery Channel.</p> <p>when the terminal receives Service Guide update containing a content fragment with same id and lower version</p> <p>then the terminal does not present the information of the updated Service Guide</p>
<b>Specification Reference</b>	[BCAST10 –ESG] Section 5.4.2.1.2, 5.5 4 <sup>th</sup> bullet item
<b>SCR Reference</b>	<p><b>Primary:</b> BCAST-SG-C-013 (M)</p> <p><b>Secondary:</b> BCAST-SG-C-002 (M), BCAST-SG-C-010 (M), BCAST-SG-C-011 (M)</p> <p>See also Appendix C.1</p>
<b>Tool</b>	BCAST conformance test tool
<b>Test code</b>	[BCAST10-ATS] TC_BCAST_ESG_CONF_102
<b>Preconditions</b>	<p>Service guide cache of terminal is erased</p> <p>Terminal is configured to listen to BCAST service guide announcements and delivery on the broadcast channel</p> <p>Access point information for service guide entry point is configured in test tool</p> <p>This test case uses the following SG fragment instantiations:</p> <p>Initial service guide:</p> <ul style="list-style-type: none"> <li>• Service fragment with Name="TvChannel"</li> <li>• Content fragment with version = "2" and Name = "Programme1-version2" , and StartTime and EndTime elements indicating values after the time of test</li> <li>• Schedule fragment for "Programme1-version2" content fragment with same values for startTime and endTime in the presentationWindow element</li> <li>• Access fragment for "Programme1-version2" schedule fragment</li> </ul> <p>Updated service guide:</p> <ul style="list-style-type: none"> <li>• Service fragment with Name="TvChannel"</li> <li>• Content fragment with version = "1" and Name = "Programme1" , and StartTime and EndTime elements indicating values after the time of test</li> <li>• Schedule fragment for "Programme1" content fragment with same values for startTime and endTime in the presentationWindow element</li> <li>• Access fragment for "Programme1" schedule fragment</li> </ul> <p>Note: All the fragments are associated with the same Service fragment and are sent in the same service guide delivery</p>

<b>Test Procedure</b>	<ul style="list-style-type: none"> <li>• Set up the test tool to produce initial BCAST service guide announcement and delivery using broadcast channel.</li> <li>• Activate the BCAST application of the terminal</li> <li>• Request from BCAST application on terminal to get the service guide (optional)</li> <li>• Browse the SG on the terminal</li> <li>• Set up the test tool to produce updated BCAST service guide announcement and delivery using broadcast channel.</li> <li>• Request from BCAST application on terminal to update the service guide (optional).</li> <li>• Browse the SG on the terminal</li> </ul>
<b>Pass-Criteria</b>	<p>The following should be visible to the end user after the initial delivery of the SG</p> <ul style="list-style-type: none"> <li>• There is a service called “TvChannel” associated with program “Programme1-version2” as well as start and end time values (There is a “TvChannel” that contains “Programme1-version2” scheduled from startTime to endTime)</li> </ul> <p>The following should be visible to the end user after the delivery of the updated SG</p> <ul style="list-style-type: none"> <li>• There is a service called “TvChannel associated with program “Programme1-version2” as well as start and end time values (There is a “TvChannel” that contains “Programme1-version2” scheduled from startTime to endTime)).</li> </ul>



### 5.1.3 Service Guide Update with additional fragments via broadcast channel

<b>Test Case Id</b>	BCAST-1.0-ESG-conf-103
<b>Test Object</b>	BCAST Terminal
<b>Test Purpose</b>	<p>with a terminal having received a Service Guide and listening to the broadcast Service Guide Delivery Channel.</p> <p>when the terminal receives an updated Service Guide containing an additional content fragment</p> <p>then the terminal presents the information of the updated Service Guide</p>
<b>Specification Reference</b>	[BCAST10 –ESG] Section 5.4.2.1.1, 5.5 1 <sup>st</sup> bullet item
<b>SCR Reference</b>	<p><b>Primary:</b> BCAST-SG-C-013 (M)</p> <p><b>Secondary:</b> BCAST-SG-C-002 (M), BCAST-SG-C-004 (O), BCAST-SG-C-010 (M), BCAST-SG-C-011 (M)</p> <p>See also Appendix C.1</p>
<b>Tool</b>	BCAST conformance test tool
<b>Test code</b>	[BCAST10-ATS] TC_BCAST_ESG_CONF_103

<p><b>Preconditions</b></p>	<p>Service guide cache of terminal is erased</p> <p>Terminal is configured to listen to BCAST service guide announcements and delivery on the broadcast channel</p> <p>Access point information for service guide entry point is configured in test tool</p> <p>This test case uses the following SG fragment instantiations:</p> <p>Initial service guide:</p> <ul style="list-style-type: none"> <li>• Service fragment with Name="TvChannel"</li> <li>• Content fragment with Name="Programme1" , and StartTime and EndTime elements indicating values after the time of test</li> <li>• Schedule fragment for content fragment with same values for startTime and endTime in the presentationWindow element</li> <li>• Access fragment for schedule fragment with BroadcastServiceDelivery element and reference to "Programme1" session description fragment</li> <li>• Session description fragment for "Programme1"</li> </ul> <p>Updated service guide:</p> <ul style="list-style-type: none"> <li>• Service fragment with Name="TvChannel"</li> <li>• Content fragment with Name="Programme1" , and StartTime and EndTime elements indicating values after the time of test</li> <li>• Schedule fragment for "Programme1" content fragment with same values for startTime and endTime in the presentationWindow element</li> <li>• Access fragment for "Programme1" schedule fragment with BroadcastServiceDelivery element and a reference to "Programme1" session description fragment</li> <li>• Session description fragment for "Programme1"</li> <li>• Content fragment with Name="Programme2" , and different StartTime and EndTime elements indicating values after the time of test</li> <li>• Schedule fragment for "Programme2" content fragment with same different values for startTime and endTime in the presentationWindow element</li> <li>• Access fragment for "Programme2" schedule fragment with BroadcastServiceDelivery element and reference to "Programme2" session description fragment</li> <li>• Session description fragment for "Programme2"</li> </ul> <p>Note: All the fragments are associated with the same Service fragment and are sent in the same service guide delivery.</p>
-----------------------------	--

<b>Test Procedure</b>	<ul style="list-style-type: none"> <li>• Set up the test tool to produce initial BCAST service guide announcement and delivery using broadcast channel.</li> <li>• Activate the BCAST application of the terminal</li> <li>• Request from BCAST application on terminal to get the service guide (optional)</li> <li>• Browse the SG on the terminal</li> <li>• Set up the test tool to produce updated BCAST service guide announcement and delivery using broadcast channel.</li> <li>• Request from BCAST application on terminal to update the service guide (optional)</li> <li>• Browse the SG on the terminal</li> </ul>
<b>Pass-Criteria</b>	<p>The following should be visible to the end user after the initial delivery of the SG</p> <ul style="list-style-type: none"> <li>• There is a service “TvChannel” associated with a program “Programme1” as well as start and end time values (There is a “TvChannel” that contains “Programme1” scheduled from startTime to endTime)</li> </ul> <p>The following should be visible to the end user after the delivery of the updated SG</p> <ul style="list-style-type: none"> <li>• There is a service “TvChannel” associated with programs “Programme1” and “Programme2” as well as different start and end time values (There is a “TvChannel” that contains “Programme1” and “Programme2” scheduled from different startTime to endTimes)</li> </ul>

### 5.1.4 GZIP compression of Service Guide Delivery Unit on broadcast channel

<b>Test Case Id</b>	BCAST-1.0-ESG-conf-104
<b>Test Object</b>	BCAST Terminal
<b>Test Purpose</b>	with a terminal listening to the broadcast Service Guide Delivery Channel. when the terminal receives a GZIP compressed Service Guide then the terminal presents the information of the Service Guide
<b>Specification Reference</b>	[BCAST10 –ESG] Section 5.4.1.4.
<b>SCR Reference</b>	<b>Primary:</b> BCAST-SG-C-009 (M) <b>Secondary:</b> BCAST-SG-C-002 (M), BCAST-SG-C-004 (O), BCAST-SG-C-010 (M), BCAST-SG-C-011 (M) See also Appendix C.1
<b>Tool</b>	BCAST conformance test tool
<b>Test code</b>	[BCAST10-ATS] TC_BCAST_ESG_CONF_104

<b>Preconditions</b>	<p>Service guide cache of terminal is erased</p> <p>Terminal is configured to listen to BCAST service guide announcements and delivery on the broadcast channel</p> <p>Access point information for service guide entry point is configured in test tool</p> <p>This test cases uses the following SG fragment instantiations:</p> <ul style="list-style-type: none"> <li>• Service fragment with Name="TvChannel"</li> <li>• Content fragment with Name="Programme1"</li> <li>• Schedule fragment for content fragment</li> <li>• Access fragment for schedule fragment</li> </ul> <p>All fragments are packaged in one SGDU, which is GZIP compressed.</p> <p>Note: All the fragments are associated with the same Service fragment and are sent in the same service guide delivery.</p>
<b>Test Procedure</b>	<ul style="list-style-type: none"> <li>• Set up the test tool to produce BCAST service guide announcement and delivery using broadcast channel.</li> <li>• Activate the BCAST application of the terminal</li> <li>• Request from BCAST application on terminal to get the service guide (optional)</li> <li>• Browse the SG on the terminal</li> </ul>
<b>Pass-Criteria</b>	<p>The following should be visible to the end user</p> <ul style="list-style-type: none"> <li>• There is a service "TvChannel" associated with programme "Programme1" (There is a "TvChannel" that contains "Programme1")</li> </ul>

### 5.1.5 Service provisioning with Content hierarchy

<b>Test Case Id</b>	BCAST-1.0-ESG-conf-105
<b>Test Object</b>	BCAST Terminal
<b>Test Purpose</b>	<p>with a terminal listening to the Service Guide Delivery Channel and for a data stream on the broadcast channel</p> <p>when the terminal receives an Service Guide containing service fragments with two content fragments that follow each other in time</p> <p>then the terminal presents the information of the Service Guide and is able to receive the data stream correctly</p>
<b>Specification Reference</b>	[BCAST10 –ESG] Section 5.1.2.1, 5.1.2.2, 5.1.2.3, 5.1.2.4, 5.1.2.5.1, 5.4.2.1, 6.1.1
<b>SCR Reference</b>	<p><b>Primary:</b> BCAST-SG-C-002 (M)</p> <p><b>Secondary:</b> BCAST-SG-C-004 (O), BCAST-SG-C-010 (M), BCAST-SG-C-011 (M)</p> <p>See also Appendix C.1</p>
<b>Tool</b>	BCAST conformance test tool
<b>Test code</b>	[BCAST10-ATS] TC_BCAST_ESG_CONF_105

<p><b>Preconditions</b></p>	<p>Service guide cache of terminal.is erased.</p> <p>Terminal is configured to listen to BCAST service guide announcements and delivery on the broadcast channel</p> <p>Access point information for service guide entry point is configured in test tool</p> <p>This test case uses the following SG fragment instantiations:</p> <ul style="list-style-type: none"> <li>• Service fragment with Name="TvChannel"</li> <li>• Content fragment for service fragment with Name="Programme1" with StartTime and EndTime elements indicating values within test execution time that result in a play time of three minutes</li> <li>• Schedule fragment for content fragment "Programme1" with same values for startTime and endTime in the presentationWindow element</li> <li>• Access fragment for "Programme1" schedule fragment with BroadcastServiceDelivery element and a reference to "Programme1" session description fragment</li> <li>• Session description fragment for "Programme1"</li> <li>• Content fragment for service fragment with Name="Programme2" with StartTime and EndTime elements indicating values within test execution time but after the ones of "Programme1"</li> <li>• Schedule fragment for content fragment "Programme2" with same values for startTime and endTime in the presentationWindow element</li> <li>• Access fragment for "Programme2" schedule fragment with BroadcastServiceDelivery element and a reference to "Programme2" session description fragment</li> <li>• Session description fragment for "Programme2"</li> </ul> <p>Note: All the fragments are associated with the same Service fragment and are sent in the same service guide delivery.</p>
<p><b>Test Procedure</b></p>	<ul style="list-style-type: none"> <li>• Set up the test tool to produce initial BCAST service guide announcement and delivery using broadcast channel.</li> <li>• Setup the test tool to stream audio and video for "Programme1" and "Programme2" via the broadcast channel</li> <li>• Activate the BCAST application of the terminal</li> <li>• Request from BCAST application on terminal to get the service guide (optional)</li> <li>• Browse the SG on the terminal</li> <li>• Access "TvChannel" on terminal</li> </ul> <p>The used video codec is:</p> <ul style="list-style-type: none"> <li>• H.264 (AVC)</li> </ul>
<p><b>Pass-Criteria</b></p>	<p>The following should be visible to the end user after the delivery of the SG</p> <ul style="list-style-type: none"> <li>• There is a service "TvChannel" associated with a program "Programme1" followed three minutes later by a program "Programme2" (There is a "TvChannel" that contains "Programme1" scheduled three minutes prior to "Programme2")</li> <li>• Terminal shows "Programme1" for three minutes which is followed by "Programme2"</li> </ul>

## 5.1.6 Service guide with Preview Data via broadcast channel

<b>Test Case Id</b>	BCAST-1.0-ESG-conf-106
<b>Test Object</b>	BCAST Terminal
<b>Test Purpose</b>	<p>with a terminal listening to the broadcast Service Guide Delivery Channel.</p> <p>when the terminal receives a Service Guide containing a service and preview data fragments indicating a picture reference and alternative text</p> <p>then the terminal presents the service and the picture or the alternative text</p>
<b>Specification Reference</b>	[BCAST10 –ESG] Section 5.1.2.9
<b>SCR Reference</b>	<p><b>Primary:</b> BCAST-SG-C-005 (M)</p> <p><b>Secondary:</b> BCAST-SG-C-002 (M), BCAST-SG-C-004 (O), BCAST-SG-C-010 (M), BCAST-SG-C-011 (M)</p> <p>See also Appendix C.1</p>
<b>Tool</b>	BCAST conformance test tool
<b>Test code</b>	[BCAST10-ATS] TC_BCAST_ESG_CONF_106
<b>Preconditions</b>	<p>Service guide cache of terminal is erased</p> <p>Terminal is configured to listen to BCAST service guide announcements and delivery on the broadcast channel</p> <p>Access point information for service guide entry point is configured in test tool</p> <p>Preview icon is delivered using a FLUTE file delivery session.</p> <p>This test cases uses the following SG fragment instantiations and files:</p> <ul style="list-style-type: none"> <li>• Service fragment with Name="TvChannel"</li> <li>• PreviewData fragment for service fragment with PictureUri and AlternativeText element set to "TV Channel icon"</li> <li>• Access fragment for previewData fragment with reference to session description fragment</li> <li>• Session description fragment with parameters for broadcast file delivery session</li> <li>• Image file "TvChannelIcon.jpg"</li> </ul> <p>Note: All the fragments are associated with the same Service fragment and are sent in the same service guide delivery.</p> <p>Set the FLUTE session to contain an FDT-instance with 'File'-element, where 'Content-Location= "TvChannelIcon.jpg"'. </p>

<b>Test Procedure</b>	<ul style="list-style-type: none"><li>• Set up the test tool to produce BCAST service guide announcement and delivery using broadcast channel.</li><li>• Setup the test tool to deliver the image file "TvChannelIcon.jpg" using a file delivery session as described by SDP.</li><li>• Activate the BCAST application of the terminal</li><li>• Request from BCAST application on terminal to get the service guide (optional)</li><li>• Browse the SG on the terminal</li></ul>
<b>Pass-Criteria</b>	<ul style="list-style-type: none"><li>• Terminal associates and displays either the icon "TvChannelIcon.jpg".or alternative text "TV Channel icon" with the service "TvChannel"</li></ul>

## 5.1.7 Service Guide with dual audio streams via broadcast channel

<b>Test Case Id</b>	BCAST-1.0-ESG-conf-107
<b>Test Object</b>	BCAST Terminal
<b>Test Purpose</b>	<p>with a terminal listening to the broadcast Service Guide Delivery Channel.</p> <p>when the terminal receives Service Guide containing one content fragment associated with two access fragments pointing to different audio streams</p> <p>then the terminal presents the information of the Service Guide and is capable of associating the content with both access fragments.</p>
<b>Specification Reference</b>	[BCAST10 –ESG] Section 5.5.1, 6.1.1, 7.2.1 Appendix C.3 (informative)
<b>SCR Reference</b>	<p><b>Primary:</b> N/A</p> <p><b>Secondary:</b> BCAST-SG-C-002 (M), BCAST-SG-C-004 (O), BCAST-SG-C-010 (M), BCAST-SG-C-011 (M)</p> <p>See also Appendix C.1</p>
<b>Tool</b>	BCAST conformance test tool
<b>Test code</b>	[BCAST10-ATS] TC_BCAST_ESG_CONF_107
<b>Preconditions</b>	<p>Service guide cache of terminal is erased</p> <p>Terminal is configured to listen to BCAST service guide announcements and delivery on the broadcast channel</p> <p>Access point information for service guide entry point is configured in test tool</p> <p>This test cases uses the following SG fragment instantiations and files:</p> <ul style="list-style-type: none"> <li>• Service fragment with Name="TvChannel"</li> <li>• Content fragment with Name="Programme"</li> <li>• Schedule fragment for content fragment</li> <li>• Access fragment for schedule fragment with BroadcastServiceDelivery element and a reference to the "Programme_eng" session description fragment</li> <li>• Session Description fragment containing SDP for "Programme_eng" (audio language is English)</li> <li>• Second schedule fragment for content fragment</li> <li>• Access fragment for second schedule fragment with BroadcastServiceDelivery element and a reference to the "Programme_ger" session description fragment</li> <li>• Session Description fragment containing SDP for "Programme_ger" (audio language is German)</li> <li>• Terminal provides means for the user in selecting the audio language.</li> </ul> <p>Note: All the fragments are associated with the same Service fragment and are sent in the same service guide delivery</p>



<b>Test Procedure</b>	<ul style="list-style-type: none"> <li>• Set up the test tool to produce BCAST service guide announcement and delivery using broadcast channel.</li> <li>• Activate the BCAST application of the terminal</li> <li>• Request from BCAST application on terminal to get the service guide (optional)</li> <li>• Browse the SG in the terminal</li> <li>• Setup the test tool to stream video, English audio, and German audio via the broadcast channel as defined by the SDP fragments</li> <li>• Select English as the audio language for “Programme”</li> <li>• Start viewing “Programme”</li> <li>• Select German as the audio language for “Programme”</li> <li>• Continue viewing “Programme”</li> </ul>
<b>Pass-Criteria</b>	<p>The following should be visible and audible to the end user after the delivery of the SG</p> <ul style="list-style-type: none"> <li>• There is a service “TvChannel” associated with a programme “Programme”.</li> <li>• “Programme” can be viewed by the end user with English as the audio language.</li> <li>• “Programme” can be viewed by the end user with German as the audio language.</li> </ul>

### 5.1.8 Service Guide update via interaction channel (same fragment id, higher version number)

<b>Test Case Id</b>	BCAST-1.0-ESG-conf-108
<b>Test Object</b>	BCAST Terminal
<b>Test Purpose</b>	<p>with a terminal having requested and received a Service Guide over the interactive Delivery Channel.</p> <p>when the terminal receives Service Guide update containing a content fragment with same id and higher version</p> <p>then the terminal presents the information of the updated Service Guide</p>
<b>Specification Reference</b>	[BCAST10 –ESG] Section 5.4.2.1.2, 5.5 3 <sup>rd</sup> bullet item
<b>SCR Reference</b>	<p><b>Primary:</b> BCAST-SG-C-014 (O).</p> <p><b>Secondary:</b> BCAST-SG-C-001 (O), BCAST-SG-C-002 (M), BCAST-SG-C-010 (M), BCAST-SG-C-012 (O)</p> <p>See also Appendix C.1</p>
<b>Tool</b>	BCAST conformance test tool
<b>Test code</b>	None
<b>Preconditions</b>	<p>Service guide cache of terminal is erased</p> <p>Terminal is configured to request BCAST service guide delivery on the interactive channel</p> <p>Access point information for service guide entry point is configured in test tool</p> <p>This test case uses the following SG fragment instantiations:</p> <p>Initial service guide:</p> <ul style="list-style-type: none"> <li>• Service fragment with Name="TvChannel"</li> <li>• Content fragment with version = "1" and Name = "Programme1" , and StartTime and EndTime elements indicating values after the time of test</li> <li>• Schedule fragment for "Programme1" content fragment with same values for startime and endTime in the presentationWindow element</li> <li>• Access fragment "Programme1" schedule fragment</li> </ul> <p>Updated service guide:</p> <ul style="list-style-type: none"> <li>• Service fragment with Name="TvChannel"</li> <li>• Content fragment with version = "2" and Name = "Programme1-version2" , and StartTime and EndTime elements indicating values after the time of test</li> <li>• Schedule fragment for "Programme1-version2" content fragment with same values for startime and endTime in the presentationWindow element</li> <li>• Access fragment for "Programme1-version2" schedule fragment</li> </ul> <p>Note: All the fragments are associated with the same Service fragment and are sent in the same service guide delivery.</p>

<b>Test Procedure</b>	<ul style="list-style-type: none"> <li>• Set up the test tool to enable initial BCAST service guide delivery using interactive channel</li> <li>• Activate the BCAST application of the terminal</li> <li>• Request from BCAST application on terminal to get the service guide</li> <li>• Browse the SG on the terminal</li> <li>• Set up the test tool to make an updated BCAST service guide available to the terminal over the interactive channel</li> <li>• Request from BCAST application on terminal to update the service guide</li> <li>• Browse the SG on the terminal</li> </ul>
<b>Pass-Criteria</b>	<p>The following should be visible to the end user after the initial delivery of the SG</p> <ul style="list-style-type: none"> <li>• There is a service “TvChannel” associated with a program “Programme1” as well as start and end time values (There is a “TvChannel” that contains “Programme1” scheduled from startTime to endTime)</li> </ul> <p>The following should be visible to the end user after the delivery of the update of the SG</p> <ul style="list-style-type: none"> <li>• There is a service “TvChannel” associated with a program “Programme1-version2” as well as start and end time values (There is a “TvChannel” that contains “Programme1-version2” scheduled from startTime to endTime)</li> </ul>

### 5.1.9 Service Guide update via interaction channel (same fragment id, lower version number)

<b>Test Case Id</b>	BCAST-1.0-ESG-conf-109
<b>Test Object</b>	BCAST Terminal
<b>Test Purpose</b>	<p>with a terminal having requested and received a Service Guide over the interactive Delivery Channel.</p> <p>when the terminal receives Service Guide update containing a content fragment with same id and lower version</p> <p>then the terminal does not present the information of the updated Service Guide</p>
<b>Specification Reference</b>	[BCAST10 –ESG] Section 5.4.2.1.2, 5.5 4 <sup>th</sup> bullet item
<b>SCR Reference</b>	<p><b>Primary:</b> BCAST-SG-C-014 (O).</p> <p><b>Secondary:</b> BCAST-SG-C-001 (O), BCAST-SG-C-002 (M), BCAST-SG-C-010 (M), BCAST-SG-C-012 (O)</p> <p>See also Appendix C.1</p>
<b>Tool</b>	BCAST conformance test tool
<b>Test code</b>	None
<b>Preconditions</b>	<p>Service guide cache of terminal is erased</p> <p>Terminal is configured to request BCAST service guide delivery on the interactive channel</p> <p>Access point information for service guide entry point is configured in test tool</p> <p>This test case uses the following SG fragment instantiations:</p> <p>Initial service guide:</p> <ul style="list-style-type: none"> <li>• Service fragment with Name="TvChannel"</li> <li>• Content fragment with version = "2" and Name = "Programme1-version2" , and StartTime and EndTime elements indicating values after the time of test</li> <li>• Schedule fragment for "Programme1-version2" content fragment with same values for startTime and endTime in the presentationWindow element</li> <li>• Access fragment for "Programme1-version2" schedule fragment</li> </ul> <p>Updated service guide:</p> <ul style="list-style-type: none"> <li>• Service fragment with Name="TvChannel"</li> <li>• Content fragment with version = "1" and Name = "Programme1" , and StartTime and EndTime elements indicating values after the time of test</li> <li>• Schedule fragment for "Programme1" content fragment with same values for startTime and endTime in the presentationWindow element</li> <li>• Access fragment for "Programme1" schedule fragment</li> </ul> <p>Note: All the fragments are associated with the same Service fragment and are sent in the same service guide delivery</p>

<b>Test Procedure</b>	<ul style="list-style-type: none"> <li>• Set up the test tool to enable initial BCAST service guide delivery using interactive channel.</li> <li>• Activate the BCAST application of the terminal</li> <li>• Request from BCAST application on terminal to get the service guide</li> <li>• Browse the SG on the terminal</li> <li>• Set up the test tool to make an updated BCAST service guide available to the terminal using the interactive channel.</li> <li>• Request from BCAST application on terminal to update the service guide</li> <li>• Browse the SG on the terminal</li> </ul>
<b>Pass-Criteria</b>	<p>The following should be visible to the end user after the initial delivery of the SG</p> <ul style="list-style-type: none"> <li>• There is a service called “TvChannel” associated with program “Programme1-version2” as well as start and end time values (There is a “TvChannel” that contains “Programme1-version2” scheduled from startTime to endTime)</li> </ul> <p>The following should be visible to the end user after the delivery of the updated SG</p> <ul style="list-style-type: none"> <li>• There is a service called “TvChannel associated with program “Programme1-version2” as well as start and end time values (There is a “TvChannel” that contains “Programme1-version2” scheduled from startTime to endTime)).</li> </ul>

### 5.1.10 Service Guide Update with additional fragments via interaction channel

<b>Test Case Id</b>	BCAST-1.0-ESG-conf-110
<b>Test Object</b>	BCAST Terminal
<b>Test Purpose</b>	<p>with a terminal having requested and received a Service Guide over the interactive Delivery Channel.</p> <p>when the terminal receives an updated Service Guide containing an additional content fragment</p> <p>then the terminal presents the information of the updated Service Guide</p>
<b>Specification Reference</b>	[BCAST10 –ESG] Section 5.4.2.1.1, 5.5 1 <sup>st</sup> bullet item
<b>SCR Reference</b>	<p><b>Primary:</b> BCAST-SG-C-014 (O).</p> <p><b>Secondary:</b> BCAST-SG-C-001 (O), BCAST-SG-C-002 (M), BCAST-SG-C-004 (O), BCAST-SG-C-010 (M), BCAST-SG-C-012 (O)</p> <p>See also Appendix C.1</p>
<b>Tool</b>	BCAST conformance test tool
<b>Test code</b>	None

<p><b>Preconditions</b></p>	<p>Service guide cache of terminal is erased</p> <p>Terminal is configured to request BCAST service guide delivery on the interactive channel</p> <p>Access point information for service guide entry point is configured in test tool</p> <p>This test case uses the following SG fragment instantiations:</p> <p>Initial service guide:</p> <ul style="list-style-type: none"> <li>• Service fragment with Name="TvChannel"</li> <li>• Content fragment with Name="Programme1" , and StartTime and EndTime elements indicating values after the time of test</li> <li>• Schedule fragment for content fragment with same values for startTime and endTime in the presentationWindow element</li> <li>• Access fragment for schedule fragment with BroadcastServiceDelivery element and reference to "Programme1" session description fragment</li> <li>• Session description fragment for "Programme1"</li> </ul> <p>Updated service guide:</p> <ul style="list-style-type: none"> <li>• Service fragment with Name="TvChannel"</li> <li>• Content fragment with Name="Programme1" , and StartTime and EndTime elements indicating values after the time of test</li> <li>• Schedule fragment for "Programme1" content fragment with same values for startTime and endTime in the presentationWindow element</li> <li>• Access fragment for "Programme1" schedule fragment with BroadcastServiceDelivery element and a reference to "Programme1" session description fragment</li> <li>• Session description fragment for "Programme1"</li> <li>• Content fragment with Name="Programme2" , and different StartTime and EndTime elements indicating values after the time of test</li> <li>• Schedule fragment for "Programme2" content fragment with same different values for startTime and endTime in the presentationWindow element</li> <li>• Access fragment for "Programme2" schedule fragment with BroadcastServiceDelivery element and reference to "Programme2" session description fragment</li> <li>• Session description fragment for "Programme2"</li> </ul> <p>Note: All the fragments are associated with the same Service fragment and are sent in the same service guide delivery.</p>
-----------------------------	--

<b>Test Procedure</b>	<ul style="list-style-type: none"> <li>• Set up the test tool to enable initial BCAST service guide delivery using interactive channel.</li> <li>• Activate the BCAST application of the terminal</li> <li>• Request from BCAST application on terminal to get the service guide</li> <li>• Browse the SG on the terminal</li> <li>• Set up the test tool to make an updated BCAST service guide available to the terminal using an ininteractive channel.</li> <li>• Request from BCAST application on terminal to update the service guide</li> <li>• Browse the SG on the terminal</li> </ul>
<b>Pass-Criteria</b>	<p>The following should be visible to the end user after the initial delivery of the SG</p> <ul style="list-style-type: none"> <li>• There is a service “TvChannel” associated with a program “Programme1” as well as start and end time values (There is a “TvChannel” that contains “Programme1” scheduled from startTime to endTime)</li> </ul> <p>The following should be visible to the end user after the delivery of the updated SG</p> <ul style="list-style-type: none"> <li>• There is a service “TvChannel” associated with programs “Programme1” and “Programme2” as well as different start and end time values (There is a “TvChannel” that contains “Programme1” and “Programme2” scheduled from different startTime to endTimes)</li> </ul>



### 5.1.11 GZIP compression of Service Guide Delivery Unit on interaction channel

<b>Test Case Id</b>	BCAST-1.0-ESG-conf-111
<b>Test Object</b>	BCAST Terminal
<b>Test Purpose</b>	<p>with a terminal having requested and received a Service Guide over the interactive Delivery Channel.</p> <p>when the terminal receives a GZIP compressed Service Guide</p> <p>then the terminal presents the information of the Service Guide</p>
<b>Specification Reference</b>	[BCAST10 –ESG] Section 5.4.1.4.
<b>SCR Reference</b>	<p><b>Primary:</b> BCAST-SG-C-009 (M)</p> <p><b>Secondary:</b> BCAST-SG-C-001 (O), BCAST-SG-C-002 (M), BCAST-SG-C-004 (O), BCAST-SG-C-010 (M), BCAST-SG-C-012 (O)</p> <p>See also Appendix C.1</p>
<b>Tool</b>	BCAST conformance test tool
<b>Test code</b>	None
<b>Preconditions</b>	<p>Service guide cache of terminal is erased</p> <p>Terminal is configured to request BCAST service guide delivery on the interactive channel</p> <p>Access point information for service guide entry point is configured in test tool</p> <p>This test cases uses the following SG fragment instantiations:</p> <ul style="list-style-type: none"> <li>• Service fragment with Name="TvChannel"</li> <li>• Content fragment with Name="Programme1"</li> <li>• Schedule fragment for content fragment</li> <li>• Access fragment for schedule fragment</li> </ul> <p>All fragments are packaged in one SGDU, which is GZIP compressed.</p> <p>Note: All the fragments are associated with the same Service fragment and are sent in the same service guide delivery.</p>
<b>Test Procedure</b>	<ul style="list-style-type: none"> <li>• Set up the test tool to enable BCAST service guide delivery using interactive channel.</li> <li>• Activate the BCAST application of the terminal</li> <li>• Request from BCAST application on terminal to get the service guide</li> <li>• Browse the SG on the terminal</li> </ul>
<b>Pass-Criteria</b>	<p>The following should be visible to the end user</p> <ul style="list-style-type: none"> <li>• There is a service "TvChannel" associated with programme "Programme1" (There is a "TvChannel" that contains "Programme1")</li> </ul>

## 5.1.12 Service provisioning with Content hierarchy via interaction channel

<b>Test Case Id</b>	BCAST-1.0-ESG-conf-112
<b>Test Object</b>	BCAST Terminal
<b>Test Purpose</b>	<p>with a terminal requests Service Guide delivery over the interactive channel</p> <p>when the terminal receives the Service Guide containing service fragments with two content fragments that follow each other in time</p> <p>then the terminal presents the information of the Service Guide and is able to receive the data stream correctly</p>
<b>Specification Reference</b>	[BCAST10 –ESG] Section 5.1.2.1, 5.1.2.2, 5.1.2.3, 5.1.2.4, 5.1.2.5.1, 5.4.2.1, 6.1.1
<b>SCR Reference</b>	<p><b>Primary:</b> BCAST-SG-C-002 (M)</p> <p><b>Secondary:</b> BCAST-SG-C-001 (O), BCAST-SG-C-004 (O), BCAST-SG-C-010 (M), BCAST-SG-C-012 (O)</p> <p>See also Appendix C.1</p>
<b>Tool</b>	BCAST conformance test tool
<b>Test code</b>	None
<b>Preconditions</b>	<p>Service guide cache of terminal is erased.</p> <p>Terminal is configured to request BCAST service guide delivery on the interactive channel</p> <p>Access point information for service guide entry point is configured in test tool</p> <p>This test case uses the following SG fragment instantiations:</p> <ul style="list-style-type: none"> <li>• Service fragment with Name="TvChannel"</li> <li>• Content fragment for service fragment with Name="Programme1" with StartTime and EndTime elements indicating values within test execution time that result in a play time of three minutes</li> <li>• Schedule fragment for content fragment "Programme1" with same values for start time and end time in the presentationWindow element</li> <li>• Access fragment for "Programme1" schedule fragment with BroadcastServiceDelivery element and a reference to "Programme1" session description fragment</li> <li>• Session description fragment for "Programme1"</li> <li>• Content fragment for service fragment with Name="Programme2" with StartTime and EndTime elements indicating values within test execution time but after the ones of "Programme1"</li> <li>• Schedule fragment for content fragment "Programme2" with same values for start time and end time in the presentationWindow element</li> <li>• Access fragment for "Programme2" schedule fragment with BroadcastServiceDelivery element and a reference to "Programme2" session description fragment</li> <li>• Session description fragment for "Programme2"</li> </ul> <p>Note: All the fragments are associated with the same Service fragment and are sent in the same service guide delivery.</p>

<b>Test Procedure</b>	<ul style="list-style-type: none"><li>• Set up the test tool to enable initial BCAST service guide delivery using interactive channel.</li><li>• Setup the test tool to stream audio and video for “Programme1” using a point to point channel and “Programme2” using a broadcast channel</li><li>• Activate the BCAST application of the terminal</li><li>• Request from BCAST application on terminal to get the service guide</li><li>• Browse the SG on the terminal</li><li>• Access “TvChannel” on terminal</li></ul>
<b>Pass-Criteria</b>	<p>The following should be visible to the end user after the delivery of the SG</p> <ul style="list-style-type: none"><li>• There is a service “TvChannel” associated with a program “Programme1” followed three minutes later by a program “Programme2” (There is a “TvChannel” that contains “Programme1” scheduled three minutes prior to “Programme2”)</li><li>• Terminal shows “Programme1” for three minutes which is followed by “Programme2”</li></ul>

### 5.1.13 Service guide with Preview Data via interaction channel

<b>Test Case Id</b>	BCAST-1.0-ESG-conf-113
<b>Test Object</b>	BCAST Terminal
<b>Test Purpose</b>	<p>with a terminal requesting a Service Guide Delivery over the interactive channel.</p> <p>when the terminal receives a Service Guide containing a service and preview data fragments indicating a picture reference and alternative text</p> <p>then the terminal presents the service and the picture or the alternative text</p>
<b>Specification Reference</b>	[BCAST10 –ESG] Section 5.1.2.9
<b>SCR Reference</b>	<p><b>Primary:</b> BCAST-SG-C-006 (O)</p> <p><b>Secondary:</b> BCAST-SG-C-001 (O), BCAST-SG-C-002 (M), BCAST-SG-C-004 (O), BCAST-SG-C-010 (M), BCAST-SG-C-012 (O)</p> <p>See also Appendix C.1</p>
<b>Tool</b>	BCAST conformance test tool
<b>Test code</b>	None
<b>Preconditions</b>	<p>Service guide cache of terminal is erased</p> <p>Terminal is configured to request BCAST service guide delivery on the interactive channel</p> <p>Access point information for service guide entry point is configured in test tool</p> <p>This test cases uses the following SG fragment instantiations and files:</p> <ul style="list-style-type: none"> <li>• Service fragment with Name="TvChannel"</li> <li>• PreviewData fragment for service fragment with PictureUri and AlternativeText element set to "TV Channel icon"</li> <li>• Access fragment for previewData fragment with reference to session description fragment</li> <li>• Session description fragment with parameters for interactive file delivery session</li> <li>• Image file "TvChannelIcon.jpg"</li> </ul> <p>Note: All the fragments are associated with the same Service fragment and are sent in the same service guide delivery.</p>
<b>Test Procedure</b>	<ul style="list-style-type: none"> <li>• Set up the test tool to enable BCAST service guide delivery using interactive channel.</li> <li>• Setup the test tool to deliver the image file "TvChannelIcon.jpg" using a file delivery session as described by SDP.</li> <li>• Activate the BCAST application of the terminal</li> <li>• Request from BCAST application on terminal to get the service guide</li> <li>• Browse the SG on the terminal</li> </ul>
<b>Pass-Criteria</b>	<ul style="list-style-type: none"> <li>• Terminal associates and displays either the icon "TvChannelIcon.jpg".or alternative text "TV Channel icon" with the service "TvChannel"</li> </ul>

## 5.1.14 Service Guide with dual audio streams via interaction channel

<b>Test Case Id</b>	BCAST-1.0-ESG-conf-114
<b>Test Object</b>	BCAST Terminal
<b>Test Purpose</b>	<p>with a terminal requesting a Service Guide Delivery over the interactive channel.</p> <p>when the terminal receives Service Guide containing one content fragment associated with two access fragments pointing to different audio streams</p> <p>then the terminal presents the information of the Service Guide and is capable of associating the content with both access fragments.</p>
<b>Specification Reference</b>	[BCAST10 –ESG] Section 5.5.1, 6.1.1, 7.2.1 Appendix C.3 (informative)
<b>SCR Reference</b>	<p><b>Primary:</b> N/A</p> <p><b>Secondary:</b> BCAST-SG-C-001 (O), BCAST-SG-C-002 (M), BCAST-SG-C-004 (O), BCAST-SG-C-010 (M), BCAST-SG-C-012 (O)</p> <p>See also Appendix C.1</p>
<b>Tool</b>	BCAST conformance test tool
<b>Test code</b>	None
<b>Preconditions</b>	<p>Service guide cache of terminal is erased</p> <p>Terminal is configured to request BCAST service guide delivery on the interactive channel</p> <p>Access point information for service guide entry point is configured in test tool</p> <p>This test cases uses the following SG fragment instantiations and files:</p> <ul style="list-style-type: none"> <li>• Service fragment with Name="TvChannel"</li> <li>• Content fragment with Name="Programme"</li> <li>• Schedule fragment for content fragment</li> <li>• Access fragment for schedule fragment with BroadcastServiceDelivery element and a reference to the "Programme_eng" session description fragment</li> <li>• Session Description fragment containing SDP for "Programme_eng" (audio language is English)</li> <li>• Second schedule fragment for content fragment</li> <li>• Access fragment for second schedule fragment with BroadcastServiceDelivery element and a reference to the "Programme_ger" session description fragment</li> <li>• Session Description fragment containing SDP for "Programme_ger" (audio language is German)</li> <li>• Terminal provides means for the user in selecting the audio language.</li> </ul> <p>Note: All the fragments are associated with the same Service fragment and are sent in the same service guide delivery</p>

<b>Test Procedure</b>	<ul style="list-style-type: none"> <li>• Set up the test tool to enable BCAST service guide delivery using interactive channel.</li> <li>• Activate the BCAST application of the terminal</li> <li>• Request from BCAST application on terminal to get the service guide</li> <li>• Browse the SG in the terminal</li> <li>• Setup the test tool to stream video, English audio, and German audio via the broadcast channel as defined by the SDP fragments</li> <li>• Select English as the audio language for “Programme”</li> <li>• Start viewing “Programme”</li> <li>• Select German as the audio language for “Programme”</li> <li>• Continue viewing “Programme”</li> </ul>
<b>Pass-Criteria</b>	<p>The following should be visible and audible to the end user after the delivery of the SG</p> <ul style="list-style-type: none"> <li>• There is a service “TvChannel” associated with a programme “Programme”.</li> <li>• “Programme” can be viewed by the end user with English as the audio language.</li> <li>• “Programme” can be viewed by the end user with German as the audio language.</li> </ul>

### 5.1.15 Service Guide discovery via broadcast channel

<b>Test Case Id</b>	BCAST-1.0-PROV-conf-101
<b>Test Object</b>	BCAST Terminal
<b>Test Purpose</b>	<p>with a terminal broadcast bearer established and configured to use the fixed service guide entry point</p> <p>when the terminal receives a service guide announcement referring to a service guide containing one service, content, access, and schedule fragment</p> <p>then the terminal presents the service and content name to the user.</p>
<b>Specification Reference</b>	[BCAST10 –ESG] Section 5.1.2.1, 5.1.2.2, 5.1.2.3, 5.1.2.4, 5.4.2.1, 6.1.1
<b>SCR Reference</b>	<p><b>Primary:</b> BCAST-SG-C-010 (M), BCAST-SG-C-011 (M)</p> <p><b>Secondary:</b> BCAST-SG-C-002 (M), BCAST-SG-C-004 (O), BCAST-SG-C-008 (M)</p> <p>See also Appendix C.1</p>
<b>Tool</b>	BCAST conformance test tool
<b>Test code</b>	[BCAST10-ATS] TC_BCAST_PROV_CONF_101

<b>Preconditions</b>	<p>Service guide cache of terminal.is erased.</p> <p>Terminal is configured to listen to BCAST service guide announcements and delivery on the broadcast channel</p> <p>Access point information for service guide entry point is configured in test tool</p> <p>This test case uses the following SG fragment instantiations:</p> <ul style="list-style-type: none"> <li>• Service fragment with Name="TvChannel"</li> <li>• Content fragment for service fragment with Name="Programme1" , and StartTime and EndTime elements indicating values after the time of test</li> <li>• Schedule fragment for content fragment with same values for startTime and endTime in the presentationWindow element</li> <li>• Access fragment for schedule fragment</li> </ul> <p>Note: All the fragments are associated with the same Service fragment and are sent in the same service guide delivery.</p>
<b>Test Procedure</b>	<ul style="list-style-type: none"> <li>• Set up the test tool to produce BCAST service guide announcement and delivery using broadcast channel.</li> <li>• Activate the BCAST application of the terminal</li> <li>• Request from BCAST application on terminal to get the service guide (optional)</li> <li>• Browse the SG on the terminal</li> </ul>
<b>Pass-Criteria</b>	<p>The following should be visible to the terminal user</p> <ul style="list-style-type: none"> <li>• There is a service "TvChannel" associated with program "Programme1" as well as start and end time values (There is a "TvChannel" that contains "Programme1" scheduled from startTime to endTime)</li> </ul>

### 5.1.16 Service Guide discovery via interaction channel (optional)

<b>Test Case Id</b>	BCAST-1.0-PROV-conf-102
<b>Test Object</b>	BCAST Terminal
<b>Test Purpose</b>	<p>with a terminal interaction bearer established and configured to use a fixed service guide entry point</p> <p>when the terminal requests and receives a service guide announcement referring to a service guide containing one service, content, access, and schedule fragment</p> <p>then the terminal presents the service and content name to the user.</p>
<b>Specification Reference</b>	[BCAST10 –ESG] Section 5.1.2.1, 5.1.2.2, 5.1.2.3, 5.1.2.4,, 5.4.3, 6.1.2, 6.2
<b>SCR Reference</b>	<p><b>Primary:</b> BCAST-SG-C-010 (M), BCAST-SG-C-012 (O)</p> <p><b>Secondary:</b> BCAST-SG-C-002 (M), BCAST-SG-C-004 (O), BCAST-SG-C-008 (M)</p> <p>See also Appendix C.1</p>
<b>Tool</b>	BCAST conformance test tool
<b>Test code</b>	[BCAST10-ATS] TC_BCAST_PROV_CONF_102

<b>Preconditions</b>	<p>Erase service guide cache of terminal.</p> <p>Configure terminal to listen to BCAST service guide announcements and delivery on the interaction channel</p> <p>Configure access point information for service guide entry point in test tool</p> <p>This test case uses the following SG fragment instantiations:</p> <ul style="list-style-type: none"> <li>• Service fragment with Name="TvChannel"</li> <li>• Content fragment with Name="Programme1" , and StartTime and EndTime elements indicating values after the time of test</li> <li>• Schedule fragment for content fragment with same values for startTime and endTime in the presentationWindow element</li> <li>• Access fragment for schedule fragment</li> </ul> <p>Note: All the fragments are associated with the same Service fragment and are sent in the same service guide delivery.</p>
<b>Test Procedure</b>	<ul style="list-style-type: none"> <li>• Set up the test tool to produce BCAST service guide announcement and delivery using interaction channel.</li> <li>• Activate the BCAST application of the terminal</li> <li>• Request from BCAST application on terminal to get the service guide (optional).</li> <li>• Browse the SG on the terminal.</li> </ul>
<b>Pass-Criteria</b>	<p>The following should be visible to the terminal user</p> <ul style="list-style-type: none"> <li>• There is a service "TvChannel" associated with a program "Programme1" as well as start and end time values (There is a "TvChannel" that contains "Programme1" scheduled from startTime to endTime)</li> </ul>



## 5.2 File and Stream Distribution

### 5.2.1 File Distribution over Broadcast channel

#### 5.2.1.1 Support of ALC protocol and delivery of meta-data in the Service Guide

<b>Test Case Id</b>	BCAST-1.0-DIST-conf-101
<b>Test Object</b>	BCAST Client
<b>Test Purpose</b>	<p>with a terminal having received Service Guide information related to a file ready for download via broadcast channel using ALC.</p> <p>when the terminal downloads file via broadcast channel</p> <p>then the terminal receives file and is able to display it</p>
<b>Specification Reference</b>	[BCAST10-Distribution] Section 5.2, 5.1.2.5.3.2
<b>SCR Reference</b>	<p><b>Primary:</b> BCAST-FD-C-001 (M)</p> <p><b>Secondary:</b> BCAST-FD-C-002 (M), BCAST-FD-C-003 (M), BCAST-FD-C-005 (M), BCAST-FD-C-008 (M), BCAST-FD-C-011(M), BCAST-FD-C-012 (M), BCAST-FD-C-013(O).</p>
<b>Tool</b>	BCAST conformance test tool
<b>Test code</b>	None
<b>Preconditions</b>	<p>Set up the test tool for Service Guide delivery to provide file delivery information for "File1". "File1" is available on the broadcast channel.</p> <p>This test cases uses the following SG fragment instantiations:</p> <ul style="list-style-type: none"> <li>Service fragment with Name="FILE"</li> <li>Content fragment with Name="File1"</li> <li>Schedule fragment with contentLocation set to URI for "name-of-the-file1".</li> <li>Access fragment with with BroadcastServiceDelivery element containing <ul style="list-style-type: none"> <li>• SessionDescription for an ALC session indicating FEC encoding 0 (Compact No-Code FEC) and</li> <li>• FileDescription with attributes Content-Location= "name-of-the-file1" and TOI="1".</li> </ul> </li> </ul> <p>Transport Object with TOI="1".</p> <p>Note: All the fragments are associated with the same Service fragment.</p> <p>IPv4 is used</p> <p>File is GZIP encoded</p>
<b>Test Procedure</b>	<ul style="list-style-type: none"> <li>• Setup the test tool to distribute file "File1" via the broadcast channel</li> <li>• Set up the terminal to receive BCAST service guide announcements</li> <li>• Browse the SG in the terminal and select the "File1" to download</li> <li>• Wait for the file download</li> </ul> <p>Note: "File1" can be a jpg picture</p>

<b>Pass-Criteria</b>	<p>The following should be visible to the end user</p> <ul style="list-style-type: none"> <li>• There is a service “FILE” associated with file “File1”</li> <li>• The file is successfully downloaded to the terminal</li> </ul> <p>Note: To verify the file was correctly downloaded the picture should be correctly displayed.</p>
----------------------	--

### 5.2.1.2 Support of in-band delivery of meta-data and FLUTE (optional)

<b>Test Case Id</b>	BCAST-1.0-DIST-conf-102
<b>Test Object</b>	BCAST Client
<b>Test Purpose</b>	<p>with a terminal having received Service Guide information related to a file ready for download via broadcast channel using FLUTE.</p> <p>when the terminal downloads file via broadcast channel</p> <p>then the terminal receives file and is able to display it</p>
<b>Specification Reference</b>	[BCAST10-Distribution] Section 5.2.6, 5.1.2.5.3.1
<b>SCR Reference</b>	<p><b>Primary:</b> BCAST-FD-C-010 (M)</p> <p><b>Secondary:</b> BCAST-FD-C-001 (M), BCAST-FD-C-002 (M), BCAST-FD-C-003 (M), BCAST-FD-C-005 (M), BCAST-FD-C-008 (M), BCAST-FD-C-012 (M)</p> <p>See also Appendix C.1</p>
<b>Tool</b>	BCAST conformance test tool
<b>Test code</b>	[BCAST10-ATS] TC_BCAST_DIST_CONF_102
<b>Preconditions</b>	<p>Set up the test tool for Service Guide delivery to provide file delivery information for "File2". "File2" is available on the broadcast channel.</p> <p>This test cases uses the following SG fragment instantiations:</p> <ul style="list-style-type: none"> <li>Service fragment with Name="FILE"</li> <li>Content fragment with Name="File2"</li> <li>Schedule fragment with contentLocation set to URI for "name-of-the-file1".</li> <li>Access fragment with BroadcastServiceDelivery element containing SessionDescription for a FLUTE session indicating FEC encoding 0 (Compact No-Code FEC) and not containing FileDescription.</li> <li>Transport Object with TOI="1".</li> </ul> <p>Set the FLUTE session to contain an FDT-Instance with one File-element having attributes Content-Location="name-of-the-file1" and TOI="1"</p> <p>Note: All the fragments are associated with the same Service fragment.</p> <ul style="list-style-type: none"> <li>IPv4 is used</li> <li>File is GZIP encoded</li> </ul>

<b>Test Procedure</b>	<ul style="list-style-type: none"> <li>• Setup the test tool to distribute file “File2” via the broadcast channel</li> <li>• Set up the terminal to receive BCAST service guide announcements</li> <li>• Browse the SG in the terminal and select the "File2" to download</li> <li>• Wait for the file download</li> </ul> <p>Note: "File2" can be a jpg picture</p>
<b>Pass-Criteria</b>	<p>The following should be visible to the end user</p> <ul style="list-style-type: none"> <li>• There is a service “FILE” associated with file “File2”</li> <li>• The file is successfully downloaded to the terminal.</li> </ul> <p>Note: To verify the file was correctly downloaded the picture should be correctly displayed.</p>

## 5.2.2 Support the delivery using HTTP over the Interaction Channel (optional)

<b>Test Case Id</b>	BCAST-1.0-DIST-conf-103
<b>Test Object</b>	BCAST Client
<b>Test Purpose</b>	<p>with a terminal having received Service Guide information related to a file ready for download using http over the interaction channel.</p> <p>when the terminal downloads file via interaction channel</p> <p>then the terminal receives file and is able to display it</p>
<b>Specification Reference</b>	[BCAST10-Distribution] Section 5.5.2, 8
<b>SCR Reference</b>	<p><b>Primary:</b> BCAST-FD-C-019 (O)</p> <p><b>Secondary:</b> BCAST-FD-C-016 (O), BCAST-FD-C-017 (O), BCAST-FD-C-020 (O), BCAST-FD-C-021 (O), BCAST-FD-C-022 (O)</p> <p>See also Appendix C.1</p>
<b>Tool</b>	BCAST conformance test tool
<b>Test code</b>	None
<b>Preconditions</b>	<p>Set up the test tool for Service Guide delivery to provide file delivery information for "File3". "File3" is available on the interaction channel.</p> <p>This test cases uses the following SG fragment instantiations:</p> <ul style="list-style-type: none"> <li>Service fragment with Name="FILE"</li> <li>Content fragment with Name="File3"</li> <li>Schedule fragment with contentLocation set to access URI for “File3”</li> <li>Access fragment with UnicastServiceDelivery element containing type set to 0 (HTTP)</li> </ul> <p>Note: All the fragments are associated with the same Service fragment.</p> <ul style="list-style-type: none"> <li>IPv4 is used</li> <li>File is GZIP encoded</li> </ul>

<b>Test Procedure</b>	<ul style="list-style-type: none"> <li>• Set up the terminal to receive BCAST service guide announcements</li> <li>• Browse the SG in the terminal and select the file 3 to download</li> <li>• Setup the test tool to distribute file “File3” via the interaction channel on request from the terminal</li> <li>• Wait for the file download</li> </ul> <p>Note: "File3" can be a jpg picture</p>
<b>Pass-Criteria</b>	<p>The following should be visible to the end user</p> <ul style="list-style-type: none"> <li>• There is a service “FILE” associated with file “File3”</li> <li>• The file is successfully downloaded to the terminal</li> </ul> <p>Note: To verify the file was correctly downloaded the picture should be correctly displayed.</p>

### 5.2.3 Support of FEC RAPTOR (optional)

<b>Test Case Id</b>	BCAST-1.0-DIST-conf-104
<b>Test Object</b>	BCAST Client
<b>Test Purpose</b>	<p>with a terminal having received Service Guide information related to a file ready for download via broadcast channel using FLUTE.</p> <p>when the terminal downloads file via broadcast channel using FEC encoding ID 1 scheme then the terminal receives file and is able to display it</p>
<b>Specification Reference</b>	[BCAST10-Distribution] - Section 5.2.2
<b>SCR Reference</b>	<p><b>Primary:</b> BCAST-FD-C-009 (O)</p> <p><b>Secondary:</b> BCAST-FD-C-001 (M), BCAST-FD-C-002 (M), BCAST-FD-C-003 (M), BCAST-FD-C-005 (M), BCAST-FD-C-007 (M), BCAST-FD-C-010 (M), BCAST-FD-C-012 (M).</p> <p>See also Appendix C.1</p>
<b>Tool</b>	BCAST conformance test tool
<b>Test code</b>	None

<b>Preconditions</b>	<p>Set up the test tool for Service Guide delivery to provide file delivery information for "File4". "File4" is available on the broadcast channel.</p> <p>This test cases uses the following SG fragment instantiations:</p> <ul style="list-style-type: none"> <li>Service fragment with Name="FILE"</li> <li>Content fragment with Name="File4"#</li> <li>Schedule fragment with contentLocation set to URI for "name-of-the-file1".</li> <li>Access fragment with BroadcastServiceDelivery element containing SessionDescription for a FLUTE session indicating FEC encoding 1 (FEC Raptor scheme) and not containing FileDescription.</li> <li>Transport Object with TOI="1".</li> </ul> <p>Set the FLUTE session to contain an FDT-Instance with one File-element having attributes Content-Location="name-of-the-file1" and TOI="1"</p> <p>Note: All the fragments are associated with the same Service fragment.</p> <ul style="list-style-type: none"> <li>IPv4 is</li> <li>File is GZIP encoded</li> </ul>
<b>Test Procedure</b>	<ul style="list-style-type: none"> <li>• Setup the test tool to distribute file "File4" via the broadcast channel</li> <li>• Set up the terminal to receive BCAST service guide announcements</li> <li>• Browse the SG in the terminal and select the "File4" to download</li> <li>• Wait for the file download</li> </ul> <p>Note: "File4" can be a jpg picture</p>
<b>Pass-Criteria</b>	<p>The following should be visible to the end user</p> <ul style="list-style-type: none"> <li>• There is a service "FILE" associated with file "File4"</li> <li>• The file is successfully downloaded to the terminal</li> </ul> <p>Note: To verify the file was correctly downloaded the picture should be correctly displayed.</p>

## 5.2.4 File Versioning handling (optional)

<b>Test Case Id</b>	BCAST-1.0-DIST-conf-105
<b>Test Object</b>	BCAST Client
<b>Test Purpose</b>	<p>with a terminal having received Service Guide information related to a file ready for download via broadcast channel using FLUTE. and having downloaded the file a first time</p> <p>when the terminal receives updated Service Guide information it downloads the file again via broadcast channel</p> <p>then the terminal receives file and is able to display it</p>
<b>Specification Reference</b>	[BCAST10-Distribution] - Section 5.2.4
<b>SCR Reference</b>	<p><b>Primary:</b> N/A</p> <p><b>Secondary:</b> BCAST-FD-C-001 (M), BCAST-FD-C-002 (M), BCAST-FD-C-003 (M), BCAST-FD-C-005 (M), BCAST-FD-C-010 (M)</p> <p>See also Appendix C.1</p>

<b>Tool</b>	BCAST conformance test tool
<b>Test code</b>	None
<b>Preconditions</b>	<p>Set up the test tool for Service Guide delivery to provide file delivery information for "File2". "File2" is available on the broadcast channel. Initial service guide is used.</p> <p>This test cases uses the following SG fragment instantiations:</p> <p>Initial service guide:</p> <ul style="list-style-type: none"> <li>Service fragment with Name="FILE"</li> <li>Content fragment with version = "1" and Name="File2"</li> <li>Schedule fragment with contentLocation set to URI for "name-of-the-file1".</li> <li>Access fragment with BroadcastServiceDelivery element containing SessionDescription for a FLUTE session and not containing FileDescription.</li> <li>Transport Object with TOI="1".</li> </ul> <p>Set the FLUTE session to contain an FDT-Instance with one File-element having attributes Content-Location="name-of-the-file1" and TOI="1"</p> <p>Updated service guide:</p> <ul style="list-style-type: none"> <li>Service fragment with Name="FILE"</li> <li>Content fragment with version = "2" and Name="File2"</li> <li>Schedule fragment with contentLocation set to URI for "name-of-the-file1".</li> <li>Access fragment with BroadcastServiceDelivery element containing SessionDescription for a FLUTE session and not containing FileDescription.</li> <li>Transport Object with TOI="1".</li> </ul> <p>Set the FLUTE session to contain an FDT-Instance with one File-element having attributes Content-Location="name-of-the-file1" and TOI="1"</p> <p>Note: All the fragments are associated with the same Service fragment. IPv4 is used</p>
<b>Test Procedure</b>	<ul style="list-style-type: none"> <li>• Setup the test tool to distribute file "File2" via the broadcast channel</li> <li>• Set up the terminal to receive BCAST service guide announcements</li> <li>• Browse the SG in the terminal and select the "File2" to download</li> <li>• The file is downloaded</li> <li>• Set up the test tool for Service Guide delivery to provide file delivery information for "File2". "File2" is available on the broadcast channel. Updated service guide is used.</li> <li>• Set up the terminal to receive BCAST service guide announcements again</li> <li>• Browse the SG in the terminal and select the "File2" to download again</li> <li>• The file is again downloaded</li> </ul> <p>Note: "File2" can be a jpg picture</p>
<b>Pass-Criteria</b>	<p>The following should be visible to the end user</p> <ul style="list-style-type: none"> <li>• There is a service "FILE2" associated with file "File2"</li> <li>• The file is successfully downloaded to the terminal for a first time</li> <li>• The file is successfully downloaded for the second time</li> </ul> <p>Note: To confirm the download of the second version another file completely different from the first one can be used.</p> <p>To verify the file was correctly downloaded the pictures should be correctly displayed</p>

## 5.2.5 Support of the post-delivery repair of files

<b>Test Case Id</b>	BCAST-1.0-DIST-conf-106
<b>Test Object</b>	BCAST Client
<b>Test Purpose</b>	<p>with a terminal having received Service Guide information related to a file ready for download via broadcast channel using FLUTE</p> <p>when the terminal receives file and determines it to be corrupted</p> <p>then the terminal performs the file repair</p>
<b>Specification Reference</b>	[BCAST10-Distribution] - Section 5.2, 5.3.3, 8, 9
<b>SCR Reference</b>	<p><b>Primary:</b> BCAST-FD-C-014 (O)</p> <p><b>Secondary:</b> BCAST-FD-C-001 (M), BCAST-FD-C-002 (M), BCAST-FD-C-003 (M), BCAST-FD-C-005 (M), BCAST-FD-C-010, BCAST-FD-C-015 (O), BCAST-FD-C-025 (O)</p> <p>See also Appendix C.1</p>
<b>Tool</b>	BCAST conformance test tool
<b>Test code</b>	None
<b>Preconditions</b>	<p>Set up the test tool for Service Guide delivery to provide file delivery information for "File2". "File2" is available on the broadcast channel.</p> <p>This test cases uses the following SG fragment instantiations:</p> <ul style="list-style-type: none"> <li>Service fragment with Name="FILE"</li> <li>Content fragment with Name="File2"</li> <li>Schedule fragment with contentLocation set to URI for "name-of-the-file1".</li> <li>Access fragment with BroadcastServiceDelivery element containing SessionDescription for a FLUTE session and not containing FileDescription. The SessionDescription element contains a ADPRef/idRef referencing an Associated Delivery Procedure</li> <li>Associated Delivery Procedure indicates postFileRepair and references one File Repair Server</li> <li>Transport Object with TOI="1".</li> </ul> <p>Set the FLUTE session to contain an FDT-Instance with one File-element having attributes Content-Location="name-of-the-file1" and TOI="1"</p> <p>Note: All the fragments are associated with the same Service fragment. IPv4 is used</p>
<b>Test Procedure</b>	<ul style="list-style-type: none"> <li>• Setup the test tool to distribute file "File2" via the broadcast channel</li> <li>• Set up the terminal to receive BCAST service guide announcements</li> <li>• Browse the SG in the terminal and select the "File2" to download</li> <li>• Terminal receives corrupted file</li> <li>• Terminal sends File Repair message (HTTP GET request) to File Repair Server</li> <li>• Test tool sends File Repair Response (HTTP 200 OK)</li> <li>• The requested (previously corrupted) file fragments are downloaded</li> </ul> <p>Note: "File2" can be a jpg picture</p>

<b>Pass-Criteria</b>	<p>The following should be visible to the end user</p> <ul style="list-style-type: none"> <li>• There is a service “FILE” associated with file “File2”</li> <li>• After the repair procedure the file is successfully downloaded to the for the second time</li> </ul> <p>Note: To verify the file was correctly downloaded the picture should be correctly displayed.</p>
----------------------	--

## 5.2.6 Support of reception report (optional)

<b>Test Case Id</b>	BCAST-1.0-DIST-conf-107
<b>Test Object</b>	BCAST Client
<b>Test Purpose</b>	<p>with a terminal having received Service Guide information related to a file ready for download via broadcast channel using FLUTE and the Associated Procedure Description requested a reception report</p> <p>when the terminal receives file</p> <p>then the terminal sends Reception Report</p>
<b>Specification Reference</b>	[BCAST10-Distribution] - Section 5.2, 5.3.2, 8, 9
<b>SCR Reference</b>	<p><b>Primary:</b> BCAST-FD-C-013 (O)</p> <p><b>Secondary:</b> BCAST-FD-C-001 (M), BCAST-FD-C-002 (M), BCAST-FD-C-003 (M), BCAST-FD-C-005 (M), BCAST-FD-C-010, BCAST-FD-C-015 (O), BCAST-FD-C-025 (O)</p> <p>See also Appendix C.1</p>
<b>Tool</b>	BCAST conformance test tool
<b>Test code</b>	None
<b>Preconditions</b>	<p>Set up the test tool for Service Guide delivery to provide file delivery information for "File2". "File2" is available on the broadcast channel.</p> <p>This test cases uses the following SG fragment instantiations:</p> <ul style="list-style-type: none"> <li>Service fragment with Name="FILE"</li> <li>Content fragment with Name="File2"</li> <li>Schedule fragment with contentLocation set to URI for "name-of-the-file1".</li> <li>Access fragment with BroadcastServiceDelivery element containing SessionDescription for a FLUTE session and not containing FileDescription. The SessionDescription element contains a ADPRef/idRef referencing an Associated Delivery Procedure Transport Object with TOI="1".</li> </ul> <p>Set the FLUTE session to contain an FDT-Instance with one File-element having attributes Content-Location="name-of-the-file1" and TOI="1"</p> <ul style="list-style-type: none"> <li>Associated Delivery Procedure indicates postReceptionReport with reportType set to " StaR " and samplePercentage set to "100"</li> </ul> <p>Note: All the fragments are associated with the same Service fragment.</p> <p>IPv4 is used</p>



<b>Test Procedure</b>	<ul style="list-style-type: none"> <li>• Setup the test tool to distribute file “File2” via the broadcast channel</li> <li>• Set up the terminal to receive BCAST service guide announcements</li> <li>• Browse the SG in the terminal and select the "File2" to download</li> <li>• The file is downloaded successfully</li> <li>• Terminal sends Reception Report message (HTTP POST) to FD</li> <li>• Test tool sends Reception Report Response (HTTP 200 OK)</li> </ul> <p>Note: "File2" can be a jpg picture</p>
<b>Pass-Criteria</b>	<p>The following should be visible to the end user</p> <ul style="list-style-type: none"> <li>• There is a service “FILE” associated with file “File2”</li> <li>• The file is successfully downloaded</li> </ul> <p>The following should be observable for the test tool</p> <ul style="list-style-type: none"> <li>• Reception Report message is received</li> </ul> <p>Note: To verify the file was correctly downloaded the picture should be correctly displayed.</p>

### 5.2.7 Support of Flute Session Setup and Control with RTSP (optional)

<b>Test Case Id</b>	BCAST-1.0-DIST-conf-108
<b>Test Object</b>	BCAST Client
<b>Test Purpose</b>	The purpose of this test is to check that the terminal correctly reports the SDP handling and control with RTSP
<b>Specification Reference</b>	[BCAST10-Distribution] - Section 5.5.1.1, 8
<b>SCR Reference</b>	<p><b>Primary:</b> BCAST-FD-C-018 (O)</p> <p><b>Secondary:</b> BCAST-FD-C-016 (O), BCAST-FD-C-017 (O), BCAST-FD-C-021 (O), BCAST-FD-C-022 (O).</p> <p>See also Appendix C.1</p>
<b>Tool</b>	BCAST conformance test tool
<b>Test code</b>	None

<p><b>Preconditions</b></p>	<p>Set up the test tool for Service Guide delivery to provide file delivery information for "File5". "File5" is available on the interaction channel.</p> <p>This test cases uses the following SG fragment instantiations:</p> <ul style="list-style-type: none"> <li>Service fragment with Name="FILE"</li> <li>Content fragment with Name="File5"</li> <li>Schedule fragment with contentLocation set to URI for "name-of-the-file1".</li> <li>Access fragment with UnicastServiceDelivery element with type set to 6 (FLUTE over Unicast) and containing AccessServerURL pointing to an RTSP access server.</li> <li>Transport Object with TOI="1".</li> </ul> <p>Set the FLUTE session to contain an FDT-Instance with one File-element having attributes Content-Location="name-of-the-file1" and TOI="1"</p> <p>Note: All the fragments are associated with the same Service fragment. IPv4 is used</p>
<p><b>Test Procedure</b></p>	<ul style="list-style-type: none"> <li>• Setup the test tool to distribute file "File5" via the interaction channel</li> <li>• Set up the terminal to receive BCAST service guide announcements</li> <li>• Browse the SG in the terminal and select the "File5"</li> <li>• The terminal establishes the FLUTE session by using the RTSP SETUP method</li> <li>• The terminal requests initiation of file download by using the RTSP PLAY method</li> <li>• The terminal requests resumption of file download by using the RTSP PLAY method</li> <li>• The terminal requests the stop of file download by using the RTSP TEARDOWN method after the complete file has been received</li> </ul> <p>Note: "File5" can be a jpg picture IPv4 is used</p>
<p><b>Pass-Criteria</b></p>	<p>The following should be visible to the end user</p> <ul style="list-style-type: none"> <li>• There is a service "FILE" associated with file "File5"</li> <li>• There is a service "FILE" associated with file "File5"</li> <li>• When the user requests to initiation of file download, the transmission starts</li> <li>• When the user requests to suspension of file download, the transmission pauses</li> <li>• When the user requests to resumption of file download, the transmission resumes</li> <li>• The file is successfully downloaded</li> </ul> <p>The following should be observable for the test tool</p> <ul style="list-style-type: none"> <li>• RTSP SETUP is received</li> <li>• RTSP PLAY is received</li> <li>• RTSP PLAY is received</li> <li>• RTSP TEARDOWN is received</li> </ul> <p>Note: To verify the file was correctly downloaded the picture should be correctly displayed.</p>

## 5.2.8 Support of RTP for stream distribution over the broadcast channel

<b>Test Case Id</b>	BCAST-1.0-DIST-conf-109
<b>Test Object</b>	BCAST Client
<b>Test Purpose</b>	<p>with a terminal having received Service Guide information related to a programme ready for streaming via broadcast channel.</p> <p>when the terminal receives programme via broadcast channel</p> <p>then the terminal is able to display programme</p>
<b>Specification Reference</b>	[BCAST10-Distribution] - Section 6.2
<b>SCR Reference</b>	<p><b>Primary:</b> BCAST-SD-C-001 (M)</p> <p><b>Secondary:</b> BCAST-SD-C-002 (M), BCAST-SD-C-003 (M), BCAST-SD-C-004 (M), BCAST-SD-C-006 (M)</p> <p>MBMS: BCAST-SD-C-007 (O)</p> <p>BCMCS: BCAST-SD-C-008 (O)</p> <p>DVB-H: BCAST-SD-C-009 (O)</p> <p>See also Appendix C.1</p>
<b>Tool</b>	BCAST conformance test tool
<b>Test code</b>	None
<b>Preconditions</b>	<p>Set up the test tool for Service Guide delivery to provide stream delivery information for "Programme1". "Programme1" is available on the broadcast channel.</p> <p>This test cases uses the following SG fragment instantiations:</p> <p style="padding-left: 40px;">Service fragment with Name="STREAM"</p> <p style="padding-left: 40px;">Content fragment with Name="Programme1"</p> <p style="padding-left: 40px;">Access fragment for access to "Programme1" with BroadcastServiceDelivery element and a reference to the Session Description fragment (SessionDescriptor/SDPRef) and specification of an appropriate set of codecs</p> <p style="padding-left: 40px;">Session Description fragment containing SDP for "Programme1"</p> <p>Note: All the fragments are associated with the same Service fragment.</p> <p>IPv4 is used</p>
<b>Test Procedure</b>	<ul style="list-style-type: none"> <li>• Setup the test tool to distribute file "Programme1" via the broadcast channel</li> <li>• Set up the terminal to receive BCAST service guide announcements</li> <li>• Browse the SG in the terminal and select the "Programme1" to render</li> <li>• The stream starts to be correctly rendered</li> </ul> <p>Note: "Programme1" must be a video or music file, 3gp and mp3 file types are recommended</p>
<b>Pass-Criteria</b>	<p>The following should be visible to the end user</p> <ul style="list-style-type: none"> <li>• There is a service "STREAM" associated with programme "Programme1"</li> <li>• "Programme1" can be viewed by the end user.</li> </ul>

## 5.2.9 Support of RTP for stream distribution over the interaction channel using SDP (optional)

<b>Test Case Id</b>	BCAST-1.0-DIST-conf-110
<b>Test Object</b>	BCAST Client
<b>Test Purpose</b>	<p>with a terminal having received Service Guide information related to a programme ready for streaming via interaction channel.</p> <p>when the terminal requests and receives programme via interaction channel using SDP</p> <p>then the terminal is able to display programme</p>
<b>Specification Reference</b>	[BCAST10-Distribution] - Section 6.5
<b>SCR Reference</b>	<p><b>Primary:</b> N/A</p> <p><b>Secondary:</b> BCAST-SD-C-004 (M), BCAST-SD-C-014 (O), BCAST-SD-C-016 (O), BCAST-SD-C-017 (O).</p> <p>MBMS: BCAST-SD-C-007 (O)</p> <p>BCMCS: BCAST-SD-C-008 (O)</p> <p>DVB-H: BCAST-SD-C-009 (O)</p> <p>See also Appendix C.1</p>
<b>Tool</b>	BCAST conformance test tool
<b>Test code</b>	None
<b>Preconditions</b>	<p>Set up the test tool for Service Guide delivery to provide stream delivery information for "Programme2". "Programme2" is available on the interaction channel.</p> <p>This test cases uses the following SG fragment instantiations:</p> <p style="padding-left: 40px;">Service fragment with Name="STREAM"</p> <p style="padding-left: 40px;">Content fragment with Name="Programme2"</p> <p style="padding-left: 40px;">Access fragment for access to "Programme2" with UnicastServiceDelivery element with type set to 3 (Generic RTSP to initialize RTP delivery), containing AccessServerURL pointing to an RTSP access server and a containing SessionDescriptor/SDPRef referencing the Session Description fragment with specification of an appropriate set of codecs.</p> <p style="padding-left: 40px;">Session Description fragment containing SDP for "Programme2"</p> <p>Note: All the fragments are associated with the same Service fragment.</p> <p>IPv4 is used</p>
<b>Test Procedure</b>	<ul style="list-style-type: none"> <li>• Setup the test tool to distribute file "Programme2" via the interaction channel</li> <li>• Set up the terminal to receive BCAST service guide announcements</li> <li>• Browse the SG in the terminal and select the "Programme2" to render, i.e. the terminal sets up and starts an RTSP session</li> <li>• The stream starts to be correctly rendered</li> </ul> <p>Note: "Programme2" must be a video or music stream which is supported by RTP, mp3 file types are recommended</p>

<b>Pass-Criteria</b>	<p>The following should be visible to the end user</p> <ul style="list-style-type: none"> <li>• There is a service “STREAM” associated with programme “Programme2”</li> <li>• “Programme2” can be viewed by the end user.</li> </ul>
----------------------	--

### 5.2.10 Support of RTP for stream distribution over the interaction channel using HTTP to get the stream description from the Access Fragment (optional)

<b>Test Case Id</b>	BCAST-1.0-DIST-conf-111
<b>Test Object</b>	BCAST Client
<b>Test Purpose</b>	<p>With a terminal having received Service Guide information related to a programme ready for streaming via interaction channel.</p> <p>When the terminal requests it receives the programme streaming description embedded on the Access Fragment via interaction channel using HTTP</p> <p>then the terminal is able to display programme</p>
<b>Specification Reference</b>	[BCAST10-Distribution] - Section 6.5
<b>SCR Reference</b>	<p><b>Primary:</b> N/A</p> <p><b>Secondary:</b> BCAST-SD-C-004 (M), BCAST-SD-C-014 (O), BCAST-SD-C-016 (O), BCAST-SD-C-017 (O).</p> <p>MBMS: BCAST-SD-C-007 (O)</p> <p>BCMCS: BCAST-SD-C-008 (O)</p> <p>DVB-H: BCAST-SD-C-009 (O)</p> <p>See also Appendix C.1</p>
<b>Tool</b>	BCAST conformance test tool
<b>Test code</b>	None
<b>Preconditions</b>	<p>Set up the test tool for Service Guide delivery to provide stream delivery information for "Programme3". "Programme3" is available on the interaction channel.</p> <p>This test case uses the following SG fragment instantiations:</p> <p style="padding-left: 40px;">Service fragment with Name="STREAM"</p> <p style="padding-left: 40px;">Content fragment with Name="Programme3"</p> <p style="padding-left: 40px;">Access fragment for access to "Programme3" with UnicastServiceDelivery element with type set to 3 or 4 or 5, containing AccessServerURL pointing to an RTSP access server and containing the field SDP with an inline Session Descriptor of the Programme stream on the SDP format embedded in a CDATA section or based 64-encoded and the SDP encoding field set accordingly</p> <p>Note: All the fragments are associated with the same Service fragment.</p> <p>IPv4 is used</p>

<b>Test Procedure</b>	<ul style="list-style-type: none"> <li>• Setup the test tool to distribute file “Programme3” via the interaction channel</li> <li>• Set up the terminal to receive BCAST service guide announcements</li> <li>• Browse the SG in the terminal and select the “Programme3” to render</li> <li>• The stream starts to be correctly rendered</li> </ul> <p>Note: “Programme3” must be a video or music file which is supported by RTP, 3gp file types are recommended</p>
<b>Pass-Criteria</b>	<p>The following should be visible to the end user</p> <ul style="list-style-type: none"> <li>• There is a service “STREAM” associated with programme “Programme3”</li> <li>• “Programme3” can be viewed by the end user.</li> </ul>

### 5.2.11 Support of streaming associated procedure (optional)

<b>Test Case Id</b>	BCAST-1.0-DIST-conf-112
<b>Test Object</b>	BCAST Client
<b>Test Purpose</b>	<p>with a terminal having received Service Guide information related to a programme ready for streaming via broadcast channel and the Associated Procedure Description requested a stream reception report.</p> <p>when the terminal receives programme via broadcast channel</p> <p>then the terminal sends Stream Reception Report</p>
<b>Specification Reference</b>	[BCAST10-Distribution] - Section 6.3.1, 6.3.2
<b>SCR Reference</b>	<p><b>Primary:</b> BCAST-SD-C-013 (O)</p> <p><b>Secondary:</b> BCAST-SD-C-014 (O)</p> <p>See also Appendix C.1</p>
<b>Tool</b>	BCAST conformance test tool
<b>Test code</b>	None
<b>Preconditions</b>	<p>Set up the test tool for Service Guide delivery to provide stream delivery information for "Programme4". "Programme4" is available on the broadcast channel.</p> <p>This test cases uses the following SG fragment instantiations:</p> <ul style="list-style-type: none"> <li>Service fragment with Name="STREAM"</li> <li>Content fragment with Name=" Programme4"</li> <li>Access fragment for access to "Programme4" with BroadcastServiceDelivery element and a reference to the Session Description fragment (SessionDescriptor/SDPRef). The SessionDescription element contains a ADPRef/idRef referencing a StreamingAssociatedProcedure element</li> <li>Session Description fragment containing SDP for "Programme4"</li> <li>StreamingAssociatedProcedure containing a FixedDurationMeasurement element indicating start and end time of measurement</li> </ul> <p>Note: All the fragments are associated with the same Service fragment.</p> <p>IPv4 is used</p>

<b>Test Procedure</b>	<ul style="list-style-type: none"> <li>• Setup the test tool to distribute file “Programme4” via the broadcast channel</li> <li>• Set up the terminal to receive BCAST service guide announcements</li> <li>• Browse the SG in the terminal and select the “Programme4” to render</li> <li>• The stream starts to be correctly rendered</li> <li>• Terminal sends Stream Reception Report message (HTTP POST) to SD</li> </ul> <p>Note: “Programme4” must be a video or music file, 3gp and mp3 file types are recommended</p>
<b>Pass-Criteria</b>	<p>The following should be visible to the end user</p> <ul style="list-style-type: none"> <li>• There is a service “STREAM” associated with programme “Programme4”</li> <li>• “Programme4” can be viewed by the end user.</li> </ul> <p>The following should be observable for the test tool</p> <ul style="list-style-type: none"> <li>• Stream Reception Report is received</li> </ul>

## 5.3 Service Interaction

### 5.3.1 Service guide with XHTML interactivity document via broadcast channel (optional)

<b>Test Case Id</b>	BCAST-1.0-INTER-conf-101
<b>Test Object</b>	BCAST Terminal
<b>Test Purpose</b>	<p>with a terminal listening to the broadcast Service Guide Delivery Channel.</p> <p>when the terminal receives Service Guide containing interactivity data for XHTML interactivity</p> <p>then terminal starts an application with XHTML data</p>
<b>Specification Reference</b>	[BCAST10-Services] Section 5.3.6, 5.3.6.1.2, 5.3.6.1.5.
<b>SCR Reference</b>	<p><b>Primary:</b> BCAST-SERVICES-C-013 (O)</p> <p><b>Secondary:</b> BCAST-SG-C-003 (O), BCAST-SERVICES-C-019 (O), BCAST-SERVICES-C-022 (M)</p> <p>See also Appendix C.1</p>
<b>Tool</b>	BCAST conformance test tool
<b>Test code</b>	[BCAST10-ATS] TC_BCAST_INTER_CONF_101

<p><b>Preconditions</b></p>	<p>Service guide cache of terminal is erased</p> <p>Terminal is configured to listen to BCAST service guide announcements and delivery on the broadcast channel</p> <p>Access point information for service guide entry point is configured in test tool</p> <p>Set up the test tool for Service Guide delivery to provide stream delivery information for "Programme1".</p> <p>Configure terminal to start a, e.g., browser, application with XHTML interactivity data</p> <p>This test cases uses the following SG fragment instantiations:</p> <ul style="list-style-type: none"> <li>• Service fragment with Name="TvChannel"</li> <li>• Content fragment with Name="Programme1"</li> <li>• InteractivityData fragment for content fragment with interactivityType set to "vote-xhtml"</li> <li>• Schedule fragment for interactivity data fragment</li> <li>• Access fragment for schedule fragment and referencing the session description fragment</li> <li>• SDP for file delivery session of interactivity media document and XHTML file</li> </ul> <p>Set the FLUTE session to transport the InteractivityMediaDocument "iamd1.xml" with TOI="1" and the file 'Vote.xhtml' with TOI="2".</p> <p>Set the FLUTE session to contain an FDT-Instance with two 'File'-elements;</p> <ul style="list-style-type: none"> <li>• one with attributes 'Content-Location="iamd1.xml"', 'Content-Type="application/vnd.oma.bcast.imd+xml"' and 'TOI="1"'</li> <li>• and another with attributes 'Content-Location="Vote.xhtml"', 'Content-Type="text/html"' and 'TOI="2"'.</li> </ul> <p>Note: All the fragments are associated with the same Service fragment and are sent in the same service guide delivery.</p> <ul style="list-style-type: none"> <li>• XHTML file "Vote.xhtml"</li> <li>• InteractivityMediaDocument with MediaObject Set element pointing to XHTML file</li> </ul>
<p><b>Test Procedure</b></p>	<ul style="list-style-type: none"> <li>• Set up the test tool to produce initial BCAST service guide announcement and delivery using broadcast channel.</li> <li>• Setup the test tool to deliver the interactivity media document and xhtml file "Vote.xhtml" using a file delivery session as described by SDP.</li> <li>• Request from BCAST application on terminal to get the service guide (optional)</li> <li>• Browse the SG on the terminal</li> <li>• Select "TvChannel" and interactivity "vote-xhtml"</li> </ul>
<p><b>Pass-Criteria</b></p>	<p>The following should be visible to the end user after the delivery of the SG</p> <ul style="list-style-type: none"> <li>• The terminal should associate the service "TvChannel" with "Programme1" and interactivity "vote-xhtml"</li> <li>• The application presents the XHTML content to end user</li> </ul>



### 5.3.2 Service guide with SMS interactivity document via broadcast channel (optional)

<b>Test Case Id</b>	BCAST-1.0-INTER-conf-102
<b>Test Object</b>	BCAST Terminal
<b>Test Purpose</b>	<p>with a terminal listening to the Service Guide Delivery Channel.</p> <p>when the terminal receives Service Guide containing interactivity data for SMS interactivity</p> <p>then the terminal sends an SMS</p>
<b>Specification Reference</b>	[BCAST10-Services] Section 5.3.6, 5.3.6.1.6.
<b>SCR Reference</b>	<p><b>Primary:</b> BCAST-SERVICES-C-014 (O)</p> <p><b>Secondary:</b> BCAST-SG-C-003 (O), BCAST-SERVICES-C-019 (O), BCAST-SERVICES-C-022 (M)</p> <p>See also Appendix C.1</p>
<b>Tool</b>	BCAST conformance test tool
<b>Test code</b>	[BCAST10-ATS] TC_BCAST_INTER_CONF_102
<b>Preconditions</b>	<p>Service guide cache of terminal is erased</p> <p>Terminal is configured to listen to BCAST service guide announcements and delivery on the broadcast channel</p> <p>Access point information for service guide entry point is configured in test tool</p> <p>This test cases uses the following SG fragment instantiations:</p> <ul style="list-style-type: none"> <li>• Service fragment with Name="TvChannel"</li> <li>• Content fragment with Name="Programme1" for service fragment</li> <li>• InteractivityData fragment for content fragment with interactivityType set to "vote-sms"</li> <li>• Schedule fragment for interactivity data fragment</li> <li>• Access fragment for schedule fragment and referencing session description fragment</li> <li>• SDP for file delivery session of interactivity media document</li> </ul> <p>Set the FLUTE session to transport the InteractivityMediaDocument "iamd1.xml" with TOI="1".</p> <p>Set the FLUTE session to contain an FDT-Instance with a 'File'-element having attributes 'Content-Location="iamd1.xml"', 'Content-Type="application/vnd.oma.bcast.imd+xml"' and "TOI="1".</p> <p>Note: All the fragments are associated with the same Service fragment and are sent in the same service guide delivery.</p> <ul style="list-style-type: none"> <li>• InteractivityMediaDocument with SMSTemplate SelectChoice set to "a", "b", and "c" and smsURI pointing to a test tool URI</li> </ul>

<b>Test Procedure</b>	<ul style="list-style-type: none"> <li>Set up the test tool to produce initial BCAST service guide announcement and delivery using broadcast channel.</li> <li>Request from BCAST application on terminal to get the service guide (optional)</li> <li>Browse the SG on the terminal</li> <li>Select "TvChannel" and interactivity "vote-sms" on the terminal</li> <li>Select choice "b" on terminal.</li> </ul>
<b>Pass-Criteria</b>	<p>The following should be visible to the end user after the delivery of the SG</p> <ul style="list-style-type: none"> <li>The terminal should associate the service "TvChannel" with "Programme1" and interactivity "vote-sms"</li> <li>The terminal displays "a", "b", and "c" as available choices .</li> </ul> <p>The following should be observable for the test tool</p> <ul style="list-style-type: none"> <li>The test tool receives an SMS from the terminal with the for choice "b"</li> </ul>

### 5.3.3 Service guide with MMS interactivity document via broadcast channel (optional)

<b>Test Case Id</b>	BCAST-1.0-INTER-conf-103
<b>Test Object</b>	BCAST Terminal
<b>Test Purpose</b>	<p>with a terminal listening to the Service Guide Delivery Channel.</p> <p>when the terminal receives Service Guide containing interactivity data for MMS interactivity</p> <p>then the terminal sends an MMS</p>
<b>Specification Reference</b>	[BCAST10-Services] Section 5.3.6, 5.3.6.1.7.
<b>SCR Reference</b>	<p><b>Primary:</b> BCAST-SERVICES-C-015 (O)</p> <p><b>Secondary:</b> BCAST-SG-C-003 (O), BCAST-SERVICES-C-019 (O), BCAST-SERVICES-C-022 (M)</p> <p>See also Appendix C.1</p>
<b>Tool</b>	BCAST conformance test tool
<b>Test code</b>	[BCAST10-ATS] TC_BCAST_INTER_CONF_103

<p><b>Preconditions</b></p>	<p>Service guide cache of terminal is erased</p> <p>Terminal is configured to listen to BCAST service guide announcements and delivery on the broadcast channel</p> <p>Access point information for service guide entry point is configured in test tool</p> <p>This test cases uses the following SG fragment instantiations:</p> <ul style="list-style-type: none"> <li>• Service fragment with Name="TvChannel"</li> <li>• Content fragment with Name="Programme1" Content fragment with Name="Programme1" for service fragment</li> <li>• InteractivityData fragment for content fragment with interactivityType set to "vote-mms"</li> <li>• Schedule fragment for interactivity data fragment</li> <li>• Access fragment for schedule fragment and referencing the session description fragment</li> <li>• SDP for file delivery session of interactivity media document and MMS files</li> <li>• InteractivityMediaDocument with MediaObject Set element pointing to the MMS Message Template.</li> </ul> <p>Set the FLUTE session to transport</p> <ul style="list-style-type: none"> <li>• InteractivityMediaDocument "iamd1.xml" with TOI="1"</li> <li>• MMS Message Template "mmstemplate.gz" with TOI="2".</li> </ul> <p>Set the FLUTE session to contain an FDT-Instance with two 'File'-elements;</p> <ul style="list-style-type: none"> <li>• one with attributes Content-Location="iamd1.xml", Content-Type="application/vnd.oma.bcast.imd+xml" and 'TOI="1"' and</li> <li>• another with attributes Content-Location="mmstemplate.gz", Content-Type="text/html" and TOI="2".</li> </ul> <p>Note: All the fragments are associated with the same Service fragment and are sent in the same service guide delivery.</p> <p>The MMS Message Template contains the following files concatenated in one GZIP:</p> <ul style="list-style-type: none"> <li>• Message Template Definition</li> <li>• MMS Presentation Part</li> <li>• Image file "ChoiceA.jpg"</li> <li>• Image file "ChoiceB.jpg"</li> <li>• Text file "Instructions.txt"</li> </ul>
<p><b>Test Procedure</b></p>	<ul style="list-style-type: none"> <li>• Set up the test tool to produce initial BCAST service guide announcement and delivery using broadcast channel.</li> <li>• Setup the test tool to deliver the interactivity media document, MMS file, and images using a file delivery session as described by SDP.</li> <li>• Request from BCAST application on terminal to get the service guide (optional)</li> <li>• Browse the SG in the terminal</li> <li>• Access "Interactivity_URL_MMS" to retrieve the InteractivityMediaDocuments</li> <li>• Interact with application to generate response and deliver response in an MMS.</li> </ul>

<b>Pass-Criteria</b>	<p>The following should be visible to the end user after the delivery of the SG</p> <ul style="list-style-type: none"><li>• Select “TvChannel” and interactivity “vote-mms” on the terminal</li><li>• Select image “ChoiceA” on terminal.</li></ul> <p>The following should be observable for the test tool</p> <ul style="list-style-type: none"><li>• The test tool receives an MMS from the terminal formatted correctly according to the MMS Template and it contains ”ChoiceA” of the user.</li></ul>
----------------------	--

## 5.4 Terminal Provisioning

## 5.5 Mobility and Roaming

### 5.5.1 Availability of Roaming and Showing SG of visited service provider (optional)

<b>Test Case Id</b>	BCAST-1.0-MORO-conf-101
<b>Test Object</b>	BCAST Terminal
<b>Test Case Description</b>	After terminal receives SGDD(s) from announced session in visited service provider network, terminal acknowledges roaming by matching BSMFiltercode. Terminal requests RoamingRule and shows service guide of visited service provider.
<b>Specification Reference</b>	[BCAST10 –Services] Section 5.7, 5.7.1
<b>SCR Reference</b>	<b>Primary:</b> BCAST-SERVICES-C-025 (O) and BCAST-SERVICES-C-026 (O) <b>Secondary:</b> BCAST-SG-C-002 (M), BCAST-SG-C-004 (O), BCAST-SG-C-008 (M), BCAST-SG-C-010 (M), and BCAST-SG-C-011 (M)
<b>Tool</b>	BCAST conformance test tool
<b>Test code</b>	None
<b>Preconditions</b>	<p>Terminal is configured to listen to BCAST service guide announcements session on the broadcast channel</p> <p>Terminal is provisioned with the following values:</p> <ul style="list-style-type: none"> <li>• &lt;X&gt;/BSMFilterCode/Value == ‘Home_BSM’</li> <li>• &lt;X&gt;/BSMFilterCode/Type == ‘2’</li> <li>• &lt;X&gt;/BSMFilterCode/IsHomeBSM == ‘true’</li> <li>• The other leaf node may have value but may skip them in this use case.</li> </ul> <p>Announced SGDD from visited service provider has the following value:</p> <ul style="list-style-type: none"> <li>• ‘id’ of ‘BSMSelector’ element == ‘visitedSP.com/service1’</li> <li>• ‘type’ of ‘BSMFilterCode’ under ‘BSMSelector’ == ‘2’</li> <li>• ‘nonSmartcardCode’ of ‘BSMFilterCode’ under ‘BSMSelector’ == ‘Visited_BSM’</li> <li>• The other elements and attributes may have value.</li> </ul> <p>RomaingRuleRequest message have the following value:</p> <ul style="list-style-type: none"> <li>• ‘UserID’ == ‘User_A’ and ‘type’ of ‘UserID’ == ‘0’</li> <li>• ‘nonSmartcardCode’ of ‘HomeBSMFilterCode’ == ‘Home_BSM’</li> <li>• ‘BSMSelectorId’ == ‘visitedSP.com/service1’</li> </ul> <p>RoamingRuleResponse message have the following value:</p> <ul style="list-style-type: none"> <li>• ‘id’ of ‘BSMSelectorId’ == ‘visitedSP.com/service1’</li> <li>• ‘allowAll’ of ‘RoamingRuleType’ == ‘true’</li> </ul>

<b>Test Procedure</b>	<ul style="list-style-type: none"><li>• Set up the test tool to produce BCAST service guide announcement and delivery using broadcast channel.</li><li>• Activate the BCAST application of the terminal</li><li>• Setup the test tool to deliver SGDD</li><li>• Receive SGDD by terminal</li><li>• Acknowledge no matching BSMFilterCode between SGDD and terminal</li><li>• Send RoamingRuleRequest message by terminal</li><li>• Receive RoamingRuleResponse message by terminal</li><li>• Receive service guide of visited service provider using SGDD</li><li>• Browse service guide of visited service provider</li></ul>
<b>Pass-Criteria</b>	Service Guide of visited service provider should be visible to the user.

## 5.6 IPDC over DVB-H Adaptation



## 5.7 3GPP MBMS Adaptation

## 5.8 3GPP2 BCMCS Adaptation

## 5.9 Service provisioning and encryption

### 5.9.1 Smartcard profile and SRTP encryption (optional)

Note: Test cases BCAST-1.0-ServProt -101a, BCAST-1.0-ServProt -101b, BCAST-1.0-ServProt-101c, BCAST-1.0-ServProt-101d, BCAST-1.0-ServProt-101e, BCAST-1.0-ServProt-101f, BCAST-1.0-ServProt-101g are expected to be executed on one test run. One TTCN-3 script can be used to implement all of these.

#### 5.9.1.1 Registration

<b>Test Case Id</b>	BCAST-1.0-ServProt-conf-101a
<b>Test Object</b>	BCAST Terminal
<b>Test Case Description</b>	When the BCAST Client is started in the terminal that initiates the MBMS User Service Registration procedure.
<b>Specification Reference</b>	[BCAST10-Services] Section 5.1.6.7
<b>SCR Reference</b>	Primary: N/A Secondary: N/A
<b>Tool</b>	BCAST conformance test tool
<b>Test code</b>	None
<b>Preconditions</b>	<p>The service guide cache of the terminal is erased.</p> <p>The value for the ServiceID field (valid concatenation of a GlobalPurchaseItemID and a PurchaseDataReference) is known by the Terminal.</p> <p>UICC contains Key management function: GBA_U and (MBMS or BCAST) key management .</p> <p>UICC contains credentials and algorithms according to 34.108 [3GPP 34.108 v7] chapter 8a</p> <p>UICC SQN value is always constant</p> <p>There is a Service Guide available. For the Service Guide instantiation details see 5.9.1.3 <b>Purchasing information</b>.</p> <p>Can be tested at the same time as:</p> <p style="text-align: center;">5.9.1.3 – Purchasing information</p>

<b>Test Procedure</b>	<ol style="list-style-type: none"> <li>1. Activate the BCAST application on the terminal.</li> <li>2. Terminal initiates the MBMS User Service Registration procedure with User Service ID "oma-bcast-allservices" and establishes an IP connection with the BSM. <ul style="list-style-type: none"> <li>○ a. The Terminal sends an initial HTTP POST (Registration indication) without authentication header.</li> <li>○ b. Test tool replies with HTTP 401 Unauthorized response with Digest challenge: RAND  AUTN (See Note1).</li> <li>○ c. Terminal uses MRK and B-TID derived from the valid bootstrapping session (B-TID as username and Ks_ext_NAF (SRK) as password) and re-rends the POST request but this time with the authentication header (Note2).</li> </ul> </li> <li>3. The test tool replies with HTTP 200 OK.</li> </ol> <p>Note1: The use of test data proposed by the [3GPP TS 35.207-700 (Implementer's Test Data)] and [3GPP TS 35.208-700 (Design Conformance Test Data)] could facilitate the computing of valid data and to verify the return values.</p> <ul style="list-style-type: none"> <li>○ Note2: In case there is no valid bootstrapping context, the terminal runs bootstrapping first as described in 5.9.1.2 <b>GBA-U Bootstrapping USIM</b>).</li> </ul>
<b>Pass-Criteria</b>	<ul style="list-style-type: none"> <li>○ 2a. The terminal sends the Registration indication</li> <li>○ 2c. The second POST request is properly formatted and contains the authentication header.</li> </ul>

### 5.9.1.2 GBA-U Bootstrapping USIM

<b>Test Case Id</b>	BCAST-1.0-ServProt-conf-101b
<b>Test Object</b>	BCAST Terminal
<b>Test Case Description</b>	When the terminal needs to do authentication and there is no existing bootstrapping context that initiates the bootstrapping flow.
<b>Specification Reference</b>	[BCAST10-ServContProt] Section 6.5.1
<b>SCR Reference</b>	Primary: N/A Secondary: BCAST-SERVICES-C-007(O)
<b>Tool</b>	BCAST conformance test tool
<b>Test code</b>	None

<b>Preconditions</b>	<p>No bootstrapping context exists between the terminal and the test tool. All existing credentials are marked as invalid.</p> <ul style="list-style-type: none"> <li>○ The value for the ServiceID field (valid concatenation of a GlobalPurchaseItemID and a PurchaseDataReference) is known by the Terminal.</li> <li>○ UICC contains Key management function: GBA_U and MBMS or BCAST key management .</li> </ul> <p>UICC contains credentials and algorithms according to 34.108 [3GPP 34.108 v7] chapter 8</p> <p>UICC SQN value is always constant.</p> <p>BSF address is set up in the terminal</p> <p>Can be tested at the same time as:</p> <p style="padding-left: 40px;">5.9.1.1 – Registration</p>
<b>Test Procedure</b>	<ol style="list-style-type: none"> <li>1. Terminal retrieves from the Service Guide the permissionIssuerURI, and extracts from it the FQDN of the BSM.</li> <li>2. Terminal detects that a bootstrapping procedure is needed (no valid SRK available).</li> <li>3. The Terminal runs the bootstrapping procedure             <ol style="list-style-type: none"> <li>a. The Terminal sends an initial GET request (HTTP request) containing the private user identity (IMPI found in the USIM derived from IMSI as specified in [3GPP TS 23.003]).</li> <li>b. Test tool replies with HTTP 401 Unauthorized response with Digest challenge: RAND  AUTN (See Note1).</li> <li>c. RAND and AUTN are used by USIM to generate RES authentication challenge response (SQN is in sync). Terminal sends this response back to the test tool in Authorization header of GET (HTTP request).</li> <li>d. Test tool generates B-TID from the IMPI and sends a 200OK message including the B-TID and the Key lifetime of the key Ks back to the terminal</li> <li>e. The terminal stores B-TID and key lifetime in the USIM EF<sub>GBABP</sub> file</li> <li>f. The terminal sends the NAF_ID received in step 1 (FQDN and UA security protocol Identifier), to the USIM and receives the returned Ks_ext_NAF</li> </ol> <p>At this time the test tool and the USIM share the bootstrap Key material Ks_int_NAF associated with B-TID.</p> </li> </ol>
<b>Pass-Criteria</b>	<ol style="list-style-type: none"> <li>4a. The terminal sends a POST request with the appropriate IMPI.</li> <li>4c. RES corresponds to the XRES in the test tool.</li> </ol>

### 5.9.1.3 Purchasing information

<b>Test Case Id</b>	BCAST-1.0-ServProt-conf-101c
<b>Test Object</b>	BCAST Terminal

<b>Test Case Description</b>	When the terminal receives Service Guide containing purchase item, purchase channel and purchase data fragments  then the terminal presents the information on the Service Guide
<b>Specification Reference</b>	[BCAST10 –ESG] Section 5.1.2.6, 5.1.2.7, 5.1.2.8 [BCAST10–ServContProt] Section 6.10.1, 6.10.1.2, 10.1.1
<b>SCR Reference</b>	<b>Primary:</b> N/A <b>Secondary:</b> BCAST-SG-C-002 (M), BCAST-SG-C-004 (O), BCAST-SG-C-010 (M), BCAST-SG-C-011 (M), BCAST-SDP-C-014 (O), BCAST-SRTPsignal-C-030 (O)
<b>Tool</b>	BCAST conformance test tool
<b>Test code</b>	None
<b>Preconditions</b>	<p>Set up the test tool to produce BCAST service guide announcement and delivery using broadcast channel.</p> <p>Terminal is configured to listen to BCAST service guide announcements and delivery on the broadcast channel.</p> <p>Access point information for service guide entry point is configured in the test tool.</p> <p>This test cases uses the following SG fragment instantiations:</p> <ul style="list-style-type: none"> <li>• Service fragment with Name="PayTvChannel ".</li> <li>• Content fragment with Name="Programme", and StartTime and EndTime elements indicating values within the time of test.</li> <li>• Schedule fragment for content fragment with same values for startTime and endTime as in the presentationWindow element.</li> <li>• Access fragment for schedule fragment with KeyManagmentSystem, EncryptionType set to SRTP, and a reference to the Session Description fragment.</li> <li>• Session Description fragment containing SDP for "Programme" and the service protection information for the SRTP encrypted service.</li> <li>• PurchaseItem fragment for service fragment with Description "Purchasable SRTPEncrypted service" element.</li> <li>• PurchaseData fragment for purchaseItem fragment with PriceInfo and Description "Discount price available" elements.</li> <li>• PurchaseChannel fragment for purchaseItem fragment with PurchaseURL pointing to a subscription site.</li> </ul> <p>Note: All the fragments are associated with the same Service fragment and are sent in the same service guide delivery.</p> <p>Continuation of / Can be tested at the same time as: 5.9.1.1– Registration</p>
<b>Test Procedure</b>	<ol style="list-style-type: none"> <li>1. Request from BCAST application on terminal to get the service guide (if not done automatically).</li> <li>2. Browse the SG in the terminal</li> </ol>

<b>Pass-Criteria</b>	<ul style="list-style-type: none"> <li>○ 2. The service “PayTvChannel” is displayed with “Programme” schedule from start to end time and price information</li> </ul>
----------------------	---

### 5.9.1.4 Purchasing Service

<b>Test Case Id</b>	BCAST-1.0-ServProt-conf-101d
<b>Test Object</b>	BCAST Terminal
<b>Test Case Description</b>	When the user purchases an encrypted service then the terminal initiates the Service Request.
<b>Specification Reference</b>	[BCAST10 –ESG] Section 5.1.5.2, 5.1.5.2.1, 5.1.5.2.2 [BCAST10–ServContProt] Section 6.6
<b>SCR Reference</b>	Primary: BCAST-SERVICES-C-006(O), BCAST-SERVICES-C-007(O), BCAST-SERVICES-C-008(O), BCAST-KeyManagement-C-016 (O) Secondary: BCAST-SPCP-C-001 (O), BCAST-TerminalCapability-C-003 (O), BCAST-SPCP-C-005 (O), BCAST-SDP-C-014 (O), BCAST-SRTPsignal-C-030 (O)
<b>Tool</b>	BCAST conformance test tool
<b>Test code</b>	None
<b>Preconditions</b>	<p>State:</p> <p>The test tool and the USIM share the bootstrap Key material Ks_int_NAF associated with B-TID.</p> <p>Continuation of / Can be tested at the same time as:</p> <p style="padding-left: 40px;">5.9.1.3 – Purchasing information</p> <p>Prerequisite for this test:</p> <p style="padding-left: 40px;">5.9.1.1 – Registration</p> <p style="padding-left: 40px;">5.9.1.3 – Purchasing information</p>
<b>Test Procedure</b>	<ol style="list-style-type: none"> <li>1. Purchase “PayTvChannel” on terminal.</li> <li>2. Terminal initiates subscription procedure for the service “PayTvChannel” <ul style="list-style-type: none"> <li>○ a. The Terminal sends an initial HTTP POST (Service Request) without authentication header.</li> <li>○ b. Test tool replies with HTTP 401 Unauthorized response with Digest challenge: RAND  AUTN.</li> <li>○ c. Terminal uses MRK and B-TID derived from the valid bootstrapping session (B-TID as username and Ks_ext_NAF (SRK) as password) and re-rends the POST request but this time with the authentication header.</li> </ul> </li> <li>3. The test tool replies with Service Response.</li> </ol>
<b>Pass-Criteria</b>	<ul style="list-style-type: none"> <li>○ 2a. The terminal sends Service Request for the service “PayTvChannel”.</li> <li>○ 2c. The second POST request is properly formatted and contains the authentication header.</li> </ul>

### 5.9.1.5 Pull LTKM delivery

<b>Test Case Id</b>	BCAST-1.0-ServProt-conf-101e
<b>Test Object</b>	BCAST Terminal
<b>Test Case Description</b>	Test that an LTKM request and delivery can be correctly performed by the terminal.
<b>Specification Reference</b>	[BCAST10–ServContProt] Section 6.6
<b>SCR Reference</b>	Primary: BCAST-LTKM_SC-C-015 (O)
<b>Tool</b>	BCAST conformance test tool
<b>Test code</b>	None
<b>Preconditions</b>	<ul style="list-style-type: none"> <li>▪ Bootstrapping context exists between conformance test tool (server) and the terminal.</li> <li>▪ The terminal knows the IP address and port on which the STKM stream and the SRTP encrypted video and audio streams are being broadcasted.</li> <li>▪ LTKM contains the following fields: <ul style="list-style-type: none"> <li>○ Key domainID= MCC1   MNC1</li> <li>○ SEK/PEK ID = 0x03 0001</li> <li>○ EXT BCAST payload and security_policy_extension = 0x04</li> <li>○ KV: TSlow= 0x00; TShigh= 0x0F.</li> </ul> </li> </ul> <p>Continuation of / Can be tested at the same time as: 0 – Purchasing Service</p> <p>Prerequisite for this test: 0 – Purchasing Service</p>
<b>Test Procedure</b>	1. The test tool pushes an LTKM over UDP to the terminal and asks for a verification message with v-bit set to '1'.
<b>Pass-Criteria</b>	1. The verification message was sent by the terminal and is correctly formatted.

### 5.9.1.6 STKM delivery and usage

<b>Test Case Id</b>	BCAST-1.0-ServProt-conf-101f
<b>Test Object</b>	BCAST Terminal
<b>Test Case Description</b>	Test that a valid STKM stream is processed by the terminal.
<b>Specification Reference</b>	[BCAST10–ServContProt] Section 6.7
<b>SCR Reference</b>	Primary: BCAST-STKM_SC-C-10 (O)
<b>Tool</b>	BCAST conformance test tool



<b>Test code</b>	None
<b>Preconditions</b>	<ul style="list-style-type: none"> <li>▪ The test tool is set up to stream encrypted audio and video for “Programme” as well as STKM stream on the broadcast channel.</li> <li>▪ A bootstrapping context exists between conformance test tool (server) and terminal.</li> <li>▪ An LTKM containing the SEK being used to protect the current TEKs has already been sent to the terminal. LTKM contains the following fields:                         <ul style="list-style-type: none"> <li>○ Key domainID= MCC1   MNC1</li> <li>○ SEK/PEK ID = 0x03 0001</li> <li>○ EXT BCAST payload and security_policy_extension = 0x04</li> <li>○ KV: TSlow= 0x00; TShigh= 0x0F.</li> </ul> </li> <li>▪ The terminal knows the IP address and port on which the STKM stream and SRTP stream are being broadcast.</li> </ul> <p>Continuation of / Can be tested at the same time as: 5.9.1.5 – Pull LTKM delivery</p> <p>Prerequisite for this test: 5.9.1.5 – Pull LTKM delivery</p>
<b>Test Procedure</b>	<p>1. The terminal receives continuous STKMs stream for the service with the Key domain ID= MCC1   MNC1.</p> <p>TEK ID of STKM is incremented for each TEK renewal with a cryptoperiod of 10s</p> <p>Within a crypto period TEK ID is not changed (STKM sent every second; i.e 10 times within the crypto period) but TS changes for each STKM within the crypto period. TS starts with 0x00 00 00 01 and TEK_ID with 0x00 01.</p> <p>If this requires too much processing on the server side, it is also possible to test without TS change during the crypto period but with for example an increment of 10 for each cryptoperiod.</p>
<b>Pass-Criteria</b>	<p>1. Video is displayed by the terminal for a time period of 20s. If the video is displayed during 15*10=150s, this means that TEK ID field is used for the checking of KV of SEK/PEK, instead of TS, which is an error.</p>

### 5.9.1.7 Deregistration

<b>Test Case Id</b>	BCAST-1.0-ServProt-conf-101g
<b>Test Object</b>	BCAST Terminal
<b>Test Case Description</b>	Test that a deregistration flow can be processed by the terminal.
<b>Specification Reference</b>	[BCAST10-Services] Section 5.1.6.9
<b>SCR Reference</b>	Primary: N/A Secondary: N/A
<b>Tool</b>	BCAST conformance test tool
<b>Test code</b>	None

<b>Preconditions</b>	<p>A bootstrapping context exists between a conformance test tool (server) and terminal.</p> <p>Continuation of / Can be tested at the same time as: 5.9.1.1 – Registration</p> <p>Prerequisite for this test: 5.9.1.1 – Registration</p>
<b>Test Procedure</b>	<ol style="list-style-type: none"> <li>1. The BCAST Client is terminated or suspended on the terminal (MBMS) or the timeout has expired after the registration (DVB-H). This should prompt a deregistration flow.</li> <li>2. Terminal initiates the MBMS User Service Deregistration procedure. <ol style="list-style-type: none"> <li>o a. The Terminal sends an initial HTTP POST (Deregistration indication) without authentication header.</li> <li>o b. Test tool replies with HTTP 401 Unauthorized response with Digest challenge: RAND  AUTN (See Note1).</li> <li>o c. Terminal uses MRK and B-TID derived from the valid bootstrapping session (B-TID as username and Ks_ext_NAF (SRK) as password) and re-rends the POST request but this time with the authentication header.</li> </ol> </li> <li>3. The test tool replies with HTTP 200 OK.</li> </ol>
<b>Pass-Criteria</b>	<ol style="list-style-type: none"> <li>o 2a. The terminal sends the Deregistration indication</li> <li>o 2c. The second POST request is properly formatted and contains the authentication header.</li> </ol>

### 5.9.1.8 Smartcard-based Parental control support

<b>Test Case Id</b>	BCAST-1.0-ServProt--101h
<b>Test Object</b>	BCAST Terminal
<b>Test Case Description</b>	Test that a valid STKM stream with parental control access criteria is processed by the terminal.
<b>Specification Reference</b>	[BCAST10–ServContProt] Section 6.7.3.10.1
<b>SCR Reference</b>	Primary: BCAST-SC_ParentalControl-C-033 (O)
<b>Tool</b>	BCAST conformance test tool
<b>Test code</b>	None

<b>Preconditions</b>	<ul style="list-style-type: none"> <li>▪ The test tool is set up to stream encrypted audio and video for “Programme” as well as STKM stream on the broadcast channel.</li> <li>▪ A bootstrapping context exists between conformance test tool (server) and terminal.</li> <li>▪ An LTKM containing the SEK being used to protect the current TEKs has already been sent to the terminal. LTKM contains the following fields: <ul style="list-style-type: none"> <li>○ Key domainID= MCC1   MNC1</li> <li>○ SEK/PEK ID = 0x03 0001</li> <li>○ EXT BCAST payload and security_policy_extension = 0x04</li> <li>○ KV: TSlow= 0x0100; TShigh= 0x015F.</li> </ul> </li> <li>▪ The terminal knows the IP address and port on which the STKM stream and SRTP stream are being broadcast.</li> <li>▪ In the smartcard the setting of the Level_granted is 0x0B and rating-type 0x00 with a PINCODE value: 020579</li> </ul> <p>Continuation of / Can be tested at the same time as: 5.9.1.5 – Pull LTKM delivery</p> <p>Prerequisite for this test: 5.9.1.5 – Pull LTKM delivery</p>
<b>Test Procedure</b>	<p>2. The terminal receives continuous STKMs stream for the service with the Key domain ID= MCC1   MNC1. The STKM stream contains parental control access criteria with different rating-values as follows:</p> <ul style="list-style-type: none"> <li>▪ From TS= 0100 to TS= 0105 : rating_value is 0x04</li> <li>▪ From TS = 0106 to TS = 011F: rating_value is 0x0F</li> </ul> <p>TS increasing by one for each crypto-period (10s)</p>
<b>Pass-Criteria</b>	<ol style="list-style-type: none"> <li>1. The video is displayed during 50s</li> <li>2. Then a message to the user is sent for the verification of PIN: verify PIN</li> <li>3. Pin code is correctly entered (value of PINCODE 020579) and then</li> <li>4. Video is displayed again</li> </ol>

## 5.9.2 Smartcard Profile and IPsec encryption (optional)

### 5.9.2.1 Registration

<b>Test Case Id</b>	BCAST-1.0-ServProt-conf-111a
<b>Test Object</b>	BCAST Terminal
<b>Test Case Description</b>	When the BCAST Client is started in the terminal that initiates the MBMS User Service Registration procedure.
<b>Specification Reference</b>	[BCAST10-Services] Section 5.1.6.7
<b>SCR Reference</b>	Primary: N/A Secondary: N/A
<b>Tool</b>	BCAST conformance test tool
<b>Test code</b>	None

<p><b>Preconditions</b></p>	<p>The service guide cache of the terminal is erased.</p> <p>The value for the ServiceID field (valid concatenation of a GlobalPurchaseItemID and a PurchaseDataReference) is known by the Terminal.</p> <p>UICC contains Key management function: GBA_U and (MBMS or BCAST) key management .</p> <p>UICC contains credentials and algorithms according to 34.108 [3GPP 34.108 v7] chapter 8</p> <p>UICC SQN value is always constant</p> <p>There is a Service Guide available. For the Service Guide instantiation details see 5.9.2.3 <b>Purchasing information</b>.</p> <p>Can be tested at the same time as: 5.9.2.3 – Purchasing information</p>
<p><b>Test Procedure</b></p>	<ol style="list-style-type: none"> <li>4. Activate the BCAST application on the terminal.</li> <li>5. Terminal initiates the MBMS User Service Registration procedure with User Service ID "oma-bcast-allservices" and establishes an IP connection with the BSM.             <ul style="list-style-type: none"> <li>o a. The Terminal sends an initial HTTP POST (Registration indication) without authentication header.</li> <li>o b. Test tool replies with HTTP 401 Unauthorized response with Digest challenge: RAND  AUTN (See Note1).</li> <li>o c. Terminal uses MRK and B-TID derived from the valid bootstrapping session (B-TID as username and Ks_ext_NAF (SRK) as password) and re-rends the POST request but this time with the authentication header (Note2).</li> </ul> </li> <li>6. The test tool replies with HTTP 200 OK.</li> </ol> <p>Note1: The use of test data proposed by the [3GPP TS 35.207-700 (Implementer’s Test Data)] and [3GPP TS 35.208-700 (Design Conformance Test Data)] could facilitate the computing of valid data and to verify the return values.</p> <ul style="list-style-type: none"> <li>o Note2: In case there is no valid bootstrapping context, the terminal runs bootstrapping first as described in 5.9.2.2 <b>GBA-U Bootstrapping USIM</b>).</li> </ul>
<p><b>Pass-Criteria</b></p>	<ul style="list-style-type: none"> <li>o 2a. The terminal sends the Registration indication</li> <li>o 2c. The second POST request is properly formatted and contains the authentication header.</li> </ul>

**5.9.2.2 GBA-U Bootstrapping USIM**

<p><b>Test Case Id</b></p>	<p>BCAST-1.0-ServProt-conf-111b</p>
<p><b>Test Object</b></p>	<p>BCAST Terminal</p>
<p><b>Test Case Description</b></p>	<p>When the terminal needs to do authentication and there is no existing bootstrapping context that initiates the bootstrapping flow.</p>

<b>Specification Reference</b>	[BCAST10–ServContProt] Section 6.5.1
<b>SCR Reference</b>	Primary: N/A Secondary: BCAST-SERVICES-C-007(O)
<b>Tool</b>	BCAST conformance test tool
<b>Test code</b>	None
<b>Preconditions</b>	<p>No bootstrapping context exists between the terminal and the test tool. All existing credentials are marked as invalid.</p> <p>The value for the ServiceID field (valid concatenation of a GlobalPurchaseItemID and a PurchaseDataReference) is known by the Terminal.</p> <p>UICC contains Key management function: GBA_U and (MBMS or BCAST) key management .</p> <p>UICC contains credentials and algorithms according to 34.108 [3GPP 34.108 v7] chapter 8</p> <p>UICC SQN value is always constant.</p> <p>BSF address is set up in the terminal.</p> <p>Can be tested at the same time as: 5.9.2.1 – Registration</p>
<b>Test Procedure</b>	<ol style="list-style-type: none"> <li>4. Terminal retrieves from the Service Guide the permissionIssuerURI, and extracts from it the FQDN of the BSM.</li> <li>5. Terminal detects that a bootstrapping procedure is needed (no valid SRK available).</li> <li>6. The Terminal runs the bootstrapping procedure <ol style="list-style-type: none"> <li>a. The Terminal sends an initial GET request (HTTP request) containing the private user identity (IMPI found in the USIM derived from IMSI as specified in [3GPP TS 23.003]).</li> <li>b. Test tool replies with HTTP 401 Unauthorized response with Digest challenge: RAND  AUTN (See Note1).</li> <li>c. RAND and AUTN are used by USIM to generate RES authentication challenge response (SQN is in sync). Terminal sends this response back to the test tool in Authorization header of GET (HTTP) request.</li> <li>d. Test tool generates B-TID from the IMPI and sends a 200OK message including the B-TID and the Key lifetime of the key Ks back to the terminal</li> <li>e. The terminal stores B-TID and key lifetime in the USIM EF<sub>GBABP</sub> file</li> <li>f. The terminal sends the NAF_ID received in step 1 (FQDN and UA security protocol Identifier), to the USIM and receives the returned Ks_ext_NAF</li> </ol> <p>At this time the test tool and the USIM share the bootstrap Key material Ks_int_NAF associated with B-TID.</p> </li> </ol>
<b>Pass-Criteria</b>	<ol style="list-style-type: none"> <li>3a. The terminal sends a POST request with the appropriate IMPI.</li> <li>3c. RES corresponds to the XRES in the test tool.</li> </ol>

### 5.9.2.3 Purchasing Information

<b>Test Case Id</b>	BCAST-1.0-ServProt-conf-111c
<b>Test Object</b>	BCAST Terminal
<b>Test Case Description</b>	When the terminal receives Service Guide containing purchase item, purchase channel and purchase data fragments  then the terminal presents the information on the Service Guide
<b>Specification Reference</b>	[BCAST10 –ESG] Section 5.1.2.6, 5.1.2.7, 5.1.2.8 [BCAST10–ServContProt] Section 6.10.1, 6.10.1.2, 10.1.1
<b>SCR Reference</b>	<b>Primary:</b> N/A <b>Secondary:</b> BCAST-SG-C-002 (M), BCAST-SG-C-004 (O), BCAST-SG-C-010 (M), BCAST-SG-C-011 (M), BCAST-SDP-C-014 (O)
<b>Tool</b>	BCAST conformance test tool
<b>Test code</b>	None
<b>Preconditions</b>	<p>Set up the test tool to produce BCAST service guide announcement and delivery using broadcast channel.</p> <p>Terminal is configured to listen to BCAST service guide announcements and delivery on the broadcast channel.</p> <p>Access point information for service guide entry point is configured in the test tool.</p> <p>This test cases uses the following SG fragment instantiations:</p> <ul style="list-style-type: none"> <li>• Service fragment with Name="PayTvChannel".</li> <li>• Content fragment with Name="Programme", and StartTime and EndTime elements indicating values within the time of test.</li> <li>• Schedule fragment for content fragment with same values for startTime and endTime as in the presentationWindow element.</li> <li>• Access fragment for schedule fragment with KeyManagmentSystem, EncryptionType set to IPSec, and a reference to the Session Description fragment.</li> <li>• Session Description fragment containing SDP for "Programme" and the service protection information for the IPSec encrypted service.</li> <li>• PurchaseItem fragment for service fragment with Description "Purchasable IPSec encrypted service" element.</li> <li>• PurchaseData fragment for purchaseItem fragment with PriceInfo and Description "Discount price available" elements.</li> <li>• PurchaseChannel fragment for purchaseItem fragment with PurchaseURL pointing to a subscription site.</li> </ul> <p>Note: All the fragments are associated with the same Service fragment and are sent in the same service guide delivery.</p> <p>Continuation of / Can be tested at the same time as: 5.9.2.1 – Registration</p>

<b>Test Procedure</b>	<ol style="list-style-type: none"> <li>1. Request from BCAST application on terminal to get the service guide (if not done automatically).</li> <li>2. Browse the SG in the terminal</li> </ol>
<b>Pass-Criteria</b>	<ol style="list-style-type: none"> <li>2. The service “PayTvChannel” is displayed with “Programme” schedule from start to end time and price information</li> </ol>

#### 5.9.2.4 Purchasing Service

<b>Test Case Id</b>	BCAST-1.0-ServProt-conf-111d
<b>Test Object</b>	BCAST Terminal
<b>Test Case Description</b>	When the user purchases an encrypted service then the terminal initiates the Service Request.
<b>Specification Reference</b>	[BCAST10 –ESG] Section 5.1.5.2, 5.1.5.2.1, 5.1.5.2.2 [BCAST10–ServContProt] Section 6.6
<b>SCR Reference</b>	Primary: BCAST-SERVICES-C-006(O), BCAST-SERVICES-C-007(O), BCAST-SERVICES-C-008(O), BCAST-KeyManagement-C-016 (O) Secondary: BCAST-SERVPROT-C-001 (O), BCAST-TerminalCapability-C-003 (O), BCAST-SERVPROT-C-005 (O), BCAST-SDP-C-014 (O)
<b>Tool</b>	BCAST conformance test tool
<b>Test code</b>	None
<b>Preconditions</b>	<p>State:</p> <p>The test tool and the USIM share the bootstrap Key material Ks_int_NAF associated with B-TID.</p> <p>Continuation of / Can be tested at the same time as:</p> <p>5.9.2.3 – Purchasing information</p> <p>Prerequisite for this test:</p> <p>5.9.2.1 – Registration</p> <p>5.9.2.3 – Purchasing information</p>
<b>Test Procedure</b>	<ol style="list-style-type: none"> <li>4. Purchase “PayTvChannel” on terminal.</li> <li>5. Terminal initiates subscription procedure for the service “PayTvChannel” <ol style="list-style-type: none"> <li>a. The Terminal sends an initial HTTP GET (Service Request) without authentication header.</li> <li>b. Test tool replies with HTTP 401 Unauthorized response with Digest challenge: RAND  AUTN.</li> <li>c. Terminal uses MRK and B-TID derived from the valid bootstrapping session (B-TID as username and Ks_ext_NAF (SRK) as password) and re-rends the GET (HTTP) request but this time with the authentication header.</li> </ol> </li> <li>6. The test tool replies with Service Response.</li> </ol>

<b>Pass-Criteria</b>	<p>2a. The terminal sends Service Request for the service "PayTvChannel".</p> <p>2c. The second POST request is properly formatted and contains the authentication header.</p>
----------------------	--

### 5.9.2.5 Pull LTKM delivery

<b>Test Case Id</b>	BCAST-1.0-ServProt-conf-111e
<b>Test Object</b>	BCAST Terminal
<b>Test Case Description</b>	Test that an LTKM request and delivery can be correctly performed by the terminal.
<b>Specification Reference</b>	[BCAST10-ServContProt] Section 6.6
<b>SCR Reference</b>	Primary: BCAST-LTKM_SC-C-015 (O)
<b>Tool</b>	BCAST conformance test tool
<b>Test code</b>	None
<b>Preconditions</b>	<ul style="list-style-type: none"> <li>▪ Bootstrapping context exists between conformance test tool (server) and the terminal.</li> <li>▪ The terminal knows the IP address and port on which the STKM stream and the IPsec encrypted video and audio streams are being broadcasted.</li> <li>▪ LTKM contains the following fields: <ul style="list-style-type: none"> <li>○ Key domainID= MCC1   MNC1</li> <li>○ SEK/PEK ID = 0x03 0001</li> <li>○ EXT BCAST payload and security_policy_extension = 0x04</li> <li>○ KV: TSlow= 0x00; TShigh= 0x0F.</li> </ul> </li> </ul> <p>Continuation of / Can be tested at the same time as: 5.9.2.4 – Purchasing Service</p> <p>Prerequisite for this test: 5.9.2.4 – Purchasing Service</p>
<b>Test Procedure</b>	1. The test tool pushes an LTKM over UDP to the terminal and asks for a verification message with v-bit set to '1'.
<b>Pass-Criteria</b>	1. The verification message was sent by the terminal and is correctly formatted.

### 5.9.2.6 STKM delivery and usage

<b>Test Case Id</b>	BCAST-1.0-ServProt-conf-111f
<b>Test Object</b>	BCAST Terminal
<b>Test Case Description</b>	Test that a valid STKM stream is processed by the terminal.



<b>Specification Reference</b>	[BCAST10–ServContProt] Section 6.7
<b>SCR Reference</b>	Primary: BCAST-STKM_SC-C-10 (O)
<b>Tool</b>	BCAST conformance test tool
<b>Test code</b>	None
<b>Preconditions</b>	<ul style="list-style-type: none"> <li>▪ The test tool is set up to stream encrypted audio and video for “Programme” as well as STKM stream on the broadcast channel.</li> <li>▪ A bootstrapping context exists between conformance test tool (server) and terminal.</li> <li>▪ An LTKM containing the SEK being used to protect the current TEKs has already been sent to the terminal. LTKM contains the following fields: <ul style="list-style-type: none"> <li>○ Key domainID= MCC1   MNC1</li> <li>○ SEK/PEK ID = 0x03 0001</li> <li>○ EXT BCAST payload and security_policy_extension = 0x04</li> <li>○ KV: TSlow= 0x00; TShigh= 0x0F.</li> </ul> </li> <li>▪ The terminal knows the IP address and port on which the STKM stream and IPSec stream are being broadcast.</li> </ul> <p>Continuation of / Can be tested at the same time as: 5.9.3.5 – Pull LTKM delivery</p> <p>Prerequisite for this test: 5.9.3.5 – Pull LTKM delivery</p>
<b>Test Procedure</b>	<ol style="list-style-type: none"> <li>1. The terminal receives continuous STKMs stream for the service with the Key domain ID= MCC1   MNC1.</li> </ol> <p>TEK ID of STKM is incremented for each TEK renewal with a cryptoperiod of 10s.</p> <p>Within a crypto period TEK ID is not changed (STKM sent every second; i.e 10 times within the crypto period) but TS changes for each STKM within the crypto period. TS starts with 0x00 00 00 01 and TEK_ID with 0x00 01.</p> <p>If this requires too much processing on the server side, it is also possible to test without TS change during the crypto period but with for example an increment of 10 for each cryptoperiod</p>
<b>Pass-Criteria</b>	<ol style="list-style-type: none"> <li>1. Video is displayed by the terminal for a time period of 20s. If the video is displayed during 15*10=150s, this means that TEK ID field is used for the checking of KV of SEK/PEK, instead of TS, which is an error.</li> </ol>

### 5.9.2.7 Deregistration

<b>Test Case Id</b>	BCAST-1.0-ServProt-conf-111g
<b>Test Object</b>	BCAST Terminal
<b>Test Case Description</b>	Test that a deregistration flow can be processed by the terminal.
<b>Specification Reference</b>	[BCAST10-Services] Section 5.1.6.9

<b>SCR Reference</b>	Primary: N/A Secondary: N/A
<b>Tool</b>	BCAST conformance test tool
<b>Test code</b>	None
<b>Preconditions</b>	A bootstrapping context exists between a conformance test tool (server) and terminal.  Continuation of / Can be tested at the same time as: 5.9.2.1 – Registration  Prerequisite for this test: 5.9.2.1 – Registration
<b>Test Procedure</b>	<ol style="list-style-type: none"> <li>1. The BCAST Client is terminated or suspended on the terminal (MBMS) or the timeout has expired after the registration (DVB-H). This should prompt a deregistration flow.</li> <li>2. Terminal initiates the MBMS User Service Deregistration procedure. <ol style="list-style-type: none"> <li>o a. The Terminal sends an initial HTTP POST (Deregistration indication) without authentication header.</li> <li>o b. Test tool replies with HTTP 401 Unauthorized response with Digest challenge: RAND  AUTN (See Note1).</li> <li>o c. Terminal uses MRK and B-TID derived from the valid bootstrapping session (B-TID as username and Ks_ext_NAF (SRK) as password) and re-rends the POST request but this time with the authentication header.</li> </ol> </li> <li>3. The test tool replies with HTTP 200 OK.</li> </ol>
<b>Pass-Criteria</b>	<ol style="list-style-type: none"> <li>2a. The terminal sends the Deregistration indication</li> <li>2c. The second POST request is properly formatted and contains the authentication header.</li> </ol>

### 5.9.2.8 Smartcard-based Parental control support

<b>Test Case Id</b>	BCAST-1.0-ServProt--111h
<b>Test Object</b>	BCAST Terminal
<b>Test Case Description</b>	Test that a valid STKM stream with parental control access criteria is processed by the terminal.
<b>Specification Reference</b>	[BCAST10–ServContProt] Section 6.7.3.10.1
<b>SCR Reference</b>	Primary: BCAST-SC_ParentalControl-C-033 (O)
<b>Tool</b>	BCAST conformance test tool
<b>Test code</b>	None

<b>Preconditions</b>	<ul style="list-style-type: none"> <li>▪ The test tool is set up to stream encrypted audio and video for “Programme” as well as STKM stream on the broadcast channel.</li> <li>▪ A bootstrapping context exists between conformance test tool (server) and terminal.</li> <li>▪ An LTKM containing the SEK being used to protect the current TEKs has already been sent to the terminal. LTKM contains the following fields:                         <ul style="list-style-type: none"> <li>○ Key domainID= MCC1   MNC1</li> <li>○ SEK/PEK ID = 0x03 0001</li> <li>○ EXT BCAST payload and security_policy_extension = 0x04</li> <li>○ KV: TSlow= 0x0100; TShigh= 0x015F.</li> </ul> </li> <li>▪ The terminal knows the IP address and port on which the STKM stream and IPSec stream are being broadcast.</li> <li>▪ In the smartcard the setting of the Level_granted is 0x0B and rating-type 0x00 with a PINCODE value: 020579</li> </ul> <p>Continuation of / Can be tested at the same time as: 5.9.1.5 – Pull LTKM delivery</p> <p>Prerequisite for this test: 5.9.1.5 – Pull LTKM delivery</p>
<b>Test Procedure</b>	<p>3. The terminal receives continuous STKMs stream for the service with the Key domain ID= MCC1   MNC1. The STKM stream contains parental control access criteria with different rating-values as follows:</p> <ul style="list-style-type: none"> <li>▪ From TS= 0100 to TS= 0105 : rating_value is 0x04</li> <li>▪ From TS = 0106 to TS = 011F: rating_value is 0x0F</li> </ul> <p>TS increasing by one for each crypto-period (10s)</p>
<b>Pass-Criteria</b>	<ol style="list-style-type: none"> <li>1. The video is displayed during 50s</li> <li>2. Then a message to the user is sent for the verification of PIN: verify PIN</li> <li>3. Pin code is correctly entered (value of PINCODE 020579) and then</li> <li>4. Video is displayed again</li> </ol>

### 5.9.3 Smartcard Profile and Ismacryp encryption (optional)

#### 5.9.3.1 Registration

<b>Test Case Id</b>	BCAST-1.0-ServProt-conf-121a
<b>Test Object</b>	BCAST Terminal
<b>Test Case Description</b>	When the BCAST Client is started in the terminal that initiates the MBMS User Service Registration procedure.
<b>Specification Reference</b>	[BCAST10-Services] Section 5.1.6.7
<b>SCR Reference</b>	Primary: N/A Secondary: N/A
<b>Tool</b>	BCAST conformance test tool
<b>Test code</b>	None

<b>Preconditions</b>	<p>The service guide cache of the terminal is erased.</p> <p>The value for the ServiceID field (valid concatenation of a GlobalPurchaseItemID and a PurchaseDataReference) is known by the Terminal.</p> <p>UICC contains Key management function: GBA_U and (MBMS or BCAST) key management .</p> <p>UICC contains credentials and algorithms according to 34.108 [3GPP 34.108 v7] chapter 8</p> <p>UICC SQN value is always constant.</p> <p>There is a Service Guide available. For the Service Guide instantiation details see 5.9.3.3 <b>Purchasing information</b>.</p> <p>Can be tested at the same time as: 5.9.3.3 – Purchasing information</p>
<b>Test Procedure</b>	<ol style="list-style-type: none"> <li>1. Activate the BCAST application on the terminal.</li> <li>2. Terminal initiates the MBMS User Service Registration procedure with User Service ID "oma-bcast-allservices" and establishes an IP connection with the BSM.             <ol style="list-style-type: none"> <li>a. The Terminal sends an initial HTTP POST (Registration indication) without authentication header.</li> <li>b. Test tool replies with HTTP 401 Unauthorized response with Digest challenge: RAND  AUTN (See Note1).</li> <li>c. Terminal uses MRK and B-TID derived from the valid bootstrapping session (B-TID as username and Ks_ext_NAF (SRK) as password) and re-rends the POST request but this time with the authentication header (Note2).</li> </ol> </li> <li>3. The test tool replies with HTTP 200 OK.</li> </ol> <p>Note1: The use of test data proposed by the [3GPP TS 35.207-700 (Implementer’s Test Data)] and [3GPP TS 35.208-700 (Design Conformance Test Data)] could facilitate the computing of valid data and to verify the return values.</p> <p>Note2: In case there is no valid bootstrapping context, the terminal runs bootstrapping first as described in 5.9.3.2 <b>GBA-U Bootstrapping USIM</b>.</p>
<b>Pass-Criteria</b>	<ol style="list-style-type: none"> <li>2a. The terminal sends the Registration indication</li> <li>2c. The second POST request is properly formatted and contains the authentication header.</li> </ol>

### 5.9.3.2 GBA-U Bootstrapping USIM

<b>Test Case Id</b>	BCAST-1.0-ServProt-conf-121b
<b>Test Object</b>	BCAST Terminal
<b>Test Case Description</b>	When the terminal needs to do authentication and there is no existing bootstrapping context that initiates the bootstrapping flow.
<b>Specification Reference</b>	[BCAST10–ServContProt] Section 6.5.1

<b>SCR Reference</b>	Primary: N/A Secondary: BCAST-SERVICES-C-007(O)
<b>Tool</b>	BCAST conformance test tool
<b>Test code</b>	None
<b>Preconditions</b>	<p>No bootstrapping context exists between the terminal and the test tool. All existing credentials are marked as invalid.</p> <p>The value for the ServiceID field (valid concatenation of a GlobalPurchaseItemID and a PurchaseDataReference) is known by the Terminal.</p> <p>UICC contains Key management function: GBA_U and (MBMS or BCAST) key management .</p> <p>UICC contains credentials and algorithms according to 34.108 [3GPP 34.108 v7] chapter 8</p> <p>UICC SQN value is UICC SQN value is always constant.</p> <p>BSF address is set up in the terminal.</p> <p>Can be tested at the same time as: 5.9.3.1 – Registration</p>
<b>Test Procedure</b>	<ol style="list-style-type: none"> <li>1. Terminal retrieves from the Service Guide the permissionIssuerURI, and extracts from it the FQDN of the BSM.</li> <li>2. Terminal detects that a bootstrapping procedure is needed (no valid SRK available).</li> <li>3. The Terminal runs the bootstrapping procedure <ol style="list-style-type: none"> <li>a. The Terminal sends an initial POST request (HTTP request) containing the private user identity (IMPI found in the USIM derived from IMSI as specified in [3GPP TS 23.003]).</li> <li>b. Test tool replies with HTTP 401 Unauthorized response with Digest challenge: RAND  AUTN (See Note1).</li> <li>c. RAND and AUTN are used by USIM to generate RES authentication challenge response (SQN is in sync). Terminal sends this response back to the test tool in Authorization header of POST request.</li> <li>d. Test tool generates B-TID from the IMPI and sends a 200OK message including the B-TID and the Key lifetime of the key Ks back to the terminal</li> <li>e. The terminal stores B-TID and key lifetime in the USIM EF<sub>GBABP</sub> file</li> <li>f. The terminal sends the NAF_ID received in step 1 (FQDN and UA security protocol Identifier), to the USIM and receives the returned Ks_ext_NAF</li> </ol> <p>At this time the test tool and the USIM share the bootstrap Key material Ks_int_NAF associated with B-TID.</p> </li> </ol>
<b>Pass-Criteria</b>	<ol style="list-style-type: none"> <li>3a. The terminal sends a POST request with the appropriate IMPI.</li> <li>3c. RES corresponds to the XRES in the test tool.</li> </ol>

### 5.9.3.3 Purchasing Information

<b>Test Case Id</b>	BCAST-1.0-ServProt-conf-121c
<b>Test Object</b>	BCAST Terminal
<b>Test Case Description</b>	When the terminal receives Service Guide containing purchase item, purchase channel and purchase data fragments  then the terminal presents the information on the Service Guide
<b>Specification Reference</b>	[BCAST10 –ESG] Section 5.1.2.6, 5.1.2.7, 5.1.2.8 [BCAST10–ServContProt] Section 6.10.1, 6.10.1.2, 10.1.1
<b>SCR Reference</b>	<b>Primary:</b> N/A <b>Secondary:</b> BCAST-SG-C-002 (M), BCAST-SG-C-004 (O), BCAST-SG-C-010 (M), BCAST-SG-C-011 (M), BCAST-SDP-C-014 (O)
<b>Tool</b>	BCAST conformance test tool
<b>Test code</b>	None
<b>Preconditions</b>	<p>Set up the test tool to produce BCAST service guide announcement and delivery using broadcast channel.</p> <p>Terminal is configured to listen to BCAST service guide announcements and delivery on the broadcast channel.</p> <p>Access point information for service guide entry point is configured in the test tool.</p> <p>This test cases uses the following SG fragment instantiations:</p> <ul style="list-style-type: none"> <li>• Service fragment with Name="PayTvChannel ".</li> <li>• Content fragment with Name="Programme", and StartTime and EndTime elements indicating values within the time of test.</li> <li>• Schedule fragment for content fragment with same values for startTime and endTime as in the presentationWindow element.</li> <li>• Access fragment for schedule fragment with KeyManagmentSystem, EncryptionType set to ISMACryp, and a reference to the Session Description fragment.</li> <li>• Session Description fragment containing SDP for "Programme" and the service protection information for the ISMACryp encrypted service.</li> <li>• PurchaseItem fragment for service fragment with Description "Purchasable ISMACryp encrypted service" element.</li> <li>• PurchaseData fragment for purchaseItem fragment with PriceInfo and Description "Discount price available" elements.</li> <li>• PurchaseChannel fragment for purchaseItem fragment with PurchaseURL pointing to a subscription site.</li> </ul> <p>Note: All the fragments are associated with the same Service fragment and are sent in the same service guide delivery.</p> <p>Continuation of / Can be tested at the same time as: 5.9.3.1 – Registration</p>

<b>Test Procedure</b>	<ol style="list-style-type: none"> <li>1. Request from BCAST application on terminal to get the service guide (if not done automatically).</li> <li>2. Browse the SG in the terminal</li> </ol>
<b>Pass-Criteria</b>	<ol style="list-style-type: none"> <li>2. The service “PayTvChannel” is displayed with “Programme” schedule from start to end time and price information</li> </ol>

### 5.9.3.4 Purchasing Service

<b>Test Case Id</b>	BCAST-1.0-ServProt-conf-121d
<b>Test Object</b>	BCAST Terminal
<b>Test Case Description</b>	When the user purchases an encrypted service then the terminal initiates the Service Request.
<b>Specification Reference</b>	[BCAST10 –ESG] Section 5.1.5.2, 5.1.5.2.1, 5.1.5.2.2 [BCAST10–ServContProt] Section 6.6
<b>SCR Reference</b>	Primary: BCAST-SERVICES-C-006(O), BCAST-SERVICES-C-007(O), BCAST-SERVICES-C-008(O), BCAST-KeyManagement-C-016 (O) Secondary: BCAST-SERVPROT-C-001 (O), BCAST-TerminalCapability-C-003 (O), BCAST-SERVPROT-C-005 (O), BCAST-SDP-C-014 (O)
<b>Tool</b>	BCAST conformance test tool
<b>Test code</b>	None
<b>Preconditions</b>	<p>State:</p> <p>The test tool and the USIM share the bootstrap Key material Ks_int_NAF associated with B-TID.</p> <p>Continuation of / Can be tested at the same time as:</p> <p>5.9.3.3 – Purchasing information</p> <p>Prerequisite for this test:</p> <p>5.9.3.1 – Registration</p> <p>5.9.3.3 – Purchasing information</p>
<b>Test Procedure</b>	<ol style="list-style-type: none"> <li>1. Purchase “PayTvChannel” on terminal.</li> <li>2. Terminal initiates subscription procedure for the service “PayTvChannel” <ul style="list-style-type: none"> <li>o a. The Terminal sends an initial HTTP POST (Service Request) without authentication header.</li> <li>o b. Test tool replies with HTTP 401 Unauthorized response with Digest challenge: RAND  AUTN.</li> <li>o c. Terminal uses MRK and B-TID derived from the valid bootstrapping session (B-TID as username and Ks_ext_NAF (SRK) as password) and re-rends the POST request but this time with the authentication header.</li> </ul> </li> <li>3. The test tool replies with Service Response.</li> </ol>

<b>Pass-Criteria</b>	<p>2a. The terminal sends Service Request for the service “PayTvChannel”.</p> <p>2c. The second POST request is properly formatted and contains the authentication header.</p>
----------------------	--

### 5.9.3.5 Pull LTKM delivery

<b>Test Case Id</b>	BCAST-1.0-ServProt-conf-121e
<b>Test Object</b>	BCAST Terminal
<b>Test Case Description</b>	Test that an LTKM request and delivery can be correctly performed by the terminal.
<b>Specification Reference</b>	[BCAST10–ServContProt] Section 6.6
<b>SCR Reference</b>	Primary: BCAST-LTKM_SC-C-015 (O)
<b>Tool</b>	BCAST conformance test tool
<b>Test code</b>	None
<b>Preconditions</b>	<ul style="list-style-type: none"> <li>▪ Bootstrapping context exists between conformance test tool (server) and the terminal.</li> <li>▪ The terminal knows the IP address and port on which the STKM stream and the ISMACryp encrypted video and audio streams are being broadcasted.</li> <li>▪ LTKM contains the following fields: <ul style="list-style-type: none"> <li>○ Key domainID= MCC1   MNC1</li> <li>○ SEK/PEK ID = 0x03 0001</li> <li>○ EXT BCAST payload and security_policy_extension = 0x04</li> <li>○ KV: TSlow= 0x00; TShigh= 0x0F.</li> </ul> </li> </ul> <p>Continuation of / Can be tested at the same time as: 5.9.3.4 – Purchasing Service</p> <p>Prerequisite for this test: 5.9.3.4 – Purchasing Service</p>
<b>Test Procedure</b>	1. The test tool pushes an LTKM over UDP to the terminal and asks for a verification message with v-bit set to ‘1’.
<b>Pass-Criteria</b>	1. The verification message was sent by the terminal and is correctly formatted.

### 5.9.3.6 STKM delivery and usage

<b>Test Case Id</b>	BCAST-1.0-ServProt-conf-121f
<b>Test Object</b>	BCAST Terminal
<b>Test Case Description</b>	Test that a valid STKM stream is processed by the terminal.



<b>Specification Reference</b>	[BCAST10–ServContProt] Section 6.7
<b>SCR Reference</b>	Primary: BCAST-STKM_SC-C-10 (O)
<b>Tool</b>	BCAST conformance test tool
<b>Test code</b>	None
<b>Preconditions</b>	<ul style="list-style-type: none"> <li>▪ The test tool is set up to stream encrypted audio and video for “Programme” as well as STKM stream on the broadcast channel.</li> <li>▪ A bootstrapping context exists between conformance test tool (server) and terminal.</li> <li>▪ An LTKM containing the SEK being used to protect the current TEKs has already been sent to the terminal. LTKM contains the following fields: <ul style="list-style-type: none"> <li>○ Key domainID= MCC1   MNC1</li> <li>○ SEK/PEK ID = 0x03 0001</li> <li>○ EXT BCAST payload and security_policy_extension = 0x04</li> <li>○ KV: TSlow= 0x00; TShigh= 0x0F.</li> </ul> </li> <li>▪ The terminal knows the IP address and port on which the STKM stream and ISMACryp stream are being broadcast.</li> </ul> <p>Continuation of / Can be tested at the same time as: 5.9.3.5 – Pull LTKM delivery</p> <p>Prerequisite for this test: 5.9.3.5 – Pull LTKM delivery</p>
<b>Test Procedure</b>	<ol style="list-style-type: none"> <li>1. The terminal receives continuous STKMs stream for the service with the Key domain ID= MCC1   MNC1.</li> </ol> <p>TEK ID of STKM is incremented for each TEK renewal with a cryptoperiod of 10s.</p> <p>Within a crypto period TEK ID is not changed (STKM sent every second; i.e 10 times within the crypto period) but TS changes for each STKM within the crypto period. TS starts with 0x00 00 00 01 and TEK_ID with 0x00 01.</p> <p>If this requires too much processing on the server side, it is also possible to test without TS change during the crypto period but with for example an increment of 10 for each cryptoperiod</p>
<b>Pass-Criteria</b>	<ol style="list-style-type: none"> <li>1. Video is displayed by the terminal for a time period of 20s. If the video is displayed during 15*10=150s, this means that TEK ID field is used for the checking of KV of SEK/PEK, instead of TS, which is an error.</li> </ol>

### 5.9.3.7 Deregistration

<b>Test Case Id</b>	BCAST-1.0-ServProt-conf-121g
<b>Test Object</b>	BCAST Terminal
<b>Test Case Description</b>	Test that a deregistration flow can be processed by the terminal.
<b>Specification Reference</b>	[BCAST10-Services] Section 5.1.6.9

<b>SCR Reference</b>	Primary: N/A Secondary: N/A
<b>Tool</b>	BCAST conformance test tool
<b>Test code</b>	None
<b>Preconditions</b>	A bootstrapping context exists between a conformance test tool (server) and terminal.  Continuation of / Can be tested at the same time as: 5.9.3.1 – Registration  Prerequisite for this test: 5.9.3.1 – Registration
<b>Test Procedure</b>	<ol style="list-style-type: none"> <li>1. The BCAST Client is terminated or suspended on the terminal (MBMS) or the timeout has expired after the registration (DVB-H). This should prompt a deregistration flow.</li> <li>2. Terminal initiates the MBMS User Service Deregistration procedure. <ol style="list-style-type: none"> <li>a. The Terminal sends an initial HTTP POST (Deregistration indication) without authentication header.</li> <li>b. Test tool replies with HTTP 401 Unauthorized response with Digest challenge: RAND  AUTN (See Note1).</li> <li>c. Terminal uses MRK and B-TID derived from the valid bootstrapping session (B-TID as username and Ks_ext_NAF (SRK) as password) and re-rends the POST request but this time with the authentication header.</li> </ol> </li> <li>3. The test tool replies with HTTP 200 OK.</li> </ol>
<b>Pass-Criteria</b>	<ol style="list-style-type: none"> <li>2a. The terminal sends the Deregistration indication</li> <li>2c. The second POST request is properly formatted and contains the authentication header.</li> </ol>

### 5.9.3.8 Smartcard-based Parental control support

<b>Test Case Id</b>	BCAST-1.0-ServProt--121h
<b>Test Object</b>	BCAST Terminal
<b>Test Case Description</b>	Test that a valid STKM stream with parental control access criteria is processed by the terminal.
<b>Specification Reference</b>	[BCAST10–ServContProt] Section 6.7.3.10.1
<b>SCR Reference</b>	Primary: BCAST-SC_ParentalControl-C-033 (O)
<b>Tool</b>	BCAST conformance test tool
<b>Test code</b>	None

<b>Preconditions</b>	<ul style="list-style-type: none"> <li>▪ The test tool is set up to stream encrypted audio and video for “Programme” as well as STKM stream on the broadcast channel.</li> <li>▪ A bootstrapping context exists between conformance test tool (server) and terminal.</li> <li>▪ An LTKM containing the SEK being used to protect the current TEKs has already been sent to the terminal. LTKM contains the following fields:                         <ul style="list-style-type: none"> <li>○ Key domainID= MCC1   MNC1</li> <li>○ SEK/PEK ID = 0x03 0001</li> <li>○ EXT BCAST payload and security_policy_extension = 0x04</li> <li>○ KV: TSlow= 0x0100; TShigh= 0x015F.</li> </ul> </li> <li>▪ The terminal knows the IP address and port on which the STKM stream and ISMACrypt stream are being broadcast.</li> <li>▪ In the smartcard the setting of the Level_granted is 0x0B and rating-type 0x00 with a PINCODE value: 020579</li> </ul> <p>Continuation of / Can be tested at the same time as:                      5.9.1.5 – Pull LTKM delivery</p> <p>Prerequisite for this test:                      5.9.1.5 – Pull LTKM delivery</p>
<b>Test Procedure</b>	<p>4. The terminal receives continuous STKMs stream for the service with the Key domain ID= MCC1   MNC1. The STKM stream contains parental control access criteria with different rating-values as follows:</p> <ul style="list-style-type: none"> <li>▪ From TS= 0100 to TS= 0105 : rating_value is 0x04</li> <li>▪ From TS = 0106 to TS = 011F: rating_value is 0x0F</li> </ul> <p>TS increasing by one for each crypto-period (10s)</p>
<b>Pass-Criteria</b>	<ol style="list-style-type: none"> <li>1. The video is displayed during 50s</li> <li>2. Then a message to the user is sent for the verification of PIN: verify PIN</li> <li>3. Pin code is correctly entered (value of PINCODE 020579) and then</li> <li>4. Video is displayed again</li> </ol>

### 5.9.4 DRM Profile and IPsec encryption via broadcast channel (optional)

<b>Test Case Id</b>	BCAST-1.0-ServProt-conf-201
<b>Test Object</b>	BCAST Terminal
<b>Test Purpose</b>	<p>with a terminal having received a service guide containing a service with purchase information on the Service Guide Delivery Channel and listening for an IPsec encrypted data stream on the broadcast channel</p> <p>when the terminal subscribes to that service on the interactive channel using a Service Request/Response message exchange</p> <p>then the terminal is able to receive, decrypt, and display the data stream correctly.</p>
<b>Specification Reference</b>	[BCAST10–ServContProt] Section 6.8.1, 9.1.

<b>SCR Reference</b>	<p><b>Primary:</b> BCAST-ContentLayer-C-008 (O)  <b>Secondary:</b> BCAST-SPCP-C-002 (O), BCAST-SDP-C-014 (O)                  DRM profile: BCAST-TerminalCapability-C-004 (O), BCAST-SPCP-C-006 (O), BCAST-STKM -C-011 (O), BCAST-LTKM_DRM-C-013 (O), BCAST-CP_RTP_DRM-C-019 (O)                  See also Appendix C.1</p>
<b>Tool</b>	BCAST conformance test tool
<b>Test code</b>	None
<b>Preconditions</b>	<p>Service guide cache of terminal is erased</p> <p>Terminal is configured to listen to BCAST service guide announcements and delivery on the broadcast channel</p> <p>Access point information for service guide entry point is configured in test tool</p> <p>This test cases uses the following SG fragment instantiations:</p> <ul style="list-style-type: none"> <li>• Service fragment with Name="PayTvChannel "</li> <li>• Content fragment with Name="Programme", and StartTime and EndTime elements indicating values within the time of test</li> <li>• Schedule fragment for content fragment with same values for startTime and endTime in the presentationWindow element</li> <li>• Access fragment for schedule fragment with KeyManagmentSystem, EncryptionType set to IPsec, and a reference to the Session Description fragment</li> <li>• Session Description fragment containing SDP for "Programme" and the service protection information for IPsec</li> <li>• PurchaseItem fragment for service fragment with Description "IPsec" element</li> <li>• PurchaseData fragment for purchaseItem fragment with PriceInfo and Description "Discount" elements</li> <li>• PurchaseChannel fragment for purchaseItem fragment with PurchaseURL pointing to a subscription site</li> </ul> <p>Note: All the fragments are associated with the same Service fragment and are sent in the same service guide delivery.</p>

<b>Test Procedure</b>	<ul style="list-style-type: none"> <li>• Set up the test tool to produce BCAST service guide announcement and delivery using broadcast channel.</li> <li>• Setup the test tool to stream via IPsec encrypted audio and video for “Programme” as well as key stream on broadcast channel</li> <li>• Setup the SEK delivery to the terminal via DRM 2.0 ROAP (DRM)</li> <li>• Activate the BCAST application of the terminal</li> <li>• Request from BCAST application on terminal to get the service guide (optional)</li> <li>• Browse the SG in the terminal</li> <li>• Setup the test tool to authenticate and accept subscription request for the Service “PayTvChannel” from the terminal via interactive channel</li> <li>• Purchase “TvChannel” on terminal</li> <li>• Access ”TvChannel” on terminal</li> </ul>
<b>Pass-Criteria</b>	<p>The following should be visible to the end user after the delivery of the SG</p> <ul style="list-style-type: none"> <li>• The service “PayTvChannel” is displayed with “Programme” schedule from start to end time, available as “Discount” purchase, and price information.</li> <li>• “Programme” can be viewed by the end user.</li> </ul> <p>The following should be observable for the test tool</p> <ul style="list-style-type: none"> <li>• The test tool receives HTTP request from the end user to subscribe to service “TvChannel”.</li> </ul>

### 5.9.5 DRM Profile and SRTP encryption via broadcast channel (optional)

<b>Test Case Id</b>	BCAST-1.0-ServProt-conf-211
<b>Test Object</b>	BCAST Terminal
<b>Test Purpose</b>	<p>with a terminal having received a service guide containing a service with purchase information on the Service Guide Delivery Channel and listening for an SRTP encrypted data stream on the broadcast channel</p> <p>when the terminal subscribes to that service on the interactive channel Service Request/Response message exchange</p> <p>then the terminal is able to receive, decrypt, and display the data stream correctly</p>
<b>Specification Reference</b>	[BCAST10-ServContProt] Section 6.8.1, 9.2.
<b>SCR Reference</b>	<p><b>Primary:</b> BCAST-ContentLayer-C-007 (O)</p> <p><b>Secondary:</b> BCAST-SPCP-C-002 (O), BCAST-SDP-C-014 (O), BCAST-SRTPsignal-C-030 (O)</p> <p>DRM profile: BCAST-TerminalCapability-C-004 (O), BCAST-SPCP-C-006 (O), BCAST-STKM -C-011 (O), BCAST-LTKM_DRM-C-013 (O), BCAST-CP_RTP_DRM-C-019 (O)</p> <p>See also Appendix C.1</p>
<b>Tool</b>	BCAST conformance test tool

<b>Test code</b>	None
<b>Preconditions</b>	<p>Service guide cache of terminal is erased</p> <p>Terminal is configured to listen to BCAST service guide announcements and delivery on the broadcast channel</p> <p>Access point information for service guide entry point is configured in test tool</p> <p>This test cases uses the following SG fragment instantiations:</p> <ul style="list-style-type: none"> <li>• Service fragment with Name="PayTvChannel "</li> <li>• Content fragment with Name="Programme", and StartTime and EndTime elements indicating values within the time of test</li> <li>• Schedule fragment for content fragment with same values for startTime and endTime in the presentationWindow element</li> <li>• Access fragment for schedule fragment with KeyManagmentSystem, EncryptionType set to SRTP, and a reference to the Session Description fragment</li> <li>• Session Description fragment containing SDP for "Programme" and the service protection information for SRTP</li> <li>• PurchaseItem fragment for service fragment with Description "SRTP" element</li> <li>• PurchaseData fragment for purchaseItem fragment with PriceInfo and Description "Discount" elements</li> <li>• PurchaseChannel fragment for purchaseItem fragment with PurchaseURL pointing to a subscription site</li> </ul> <p>Note: All the fragments are associated with the same Service fragment and are sent in the same service guide delivery..</p>
<b>Test Procedure</b>	<ul style="list-style-type: none"> <li>• Set up the test tool to produce BCAST service guide announcement and delivery using broadcast channel.</li> <li>• Setup the test tool to stream via SRTP encrypted audio and video for "Programme" as well as key stream on broadcast channel</li> <li>• Setup the SEK delivery to the terminal via DRM 2.0 ROAP (DRM)</li> <li>• Activate the BCAST application of the terminal</li> <li>• Request from BCAST application on terminal to get the service guide (optional)</li> <li>• Browse the SG in the terminal</li> <li>• Setup the test tool to authenticate and accept subscription request for the Service "PayTvChannel" from the terminal via interactive channel</li> <li>• Purchase "TvChannel" on terminal</li> <li>• Access "TvChannel" on terminal</li> </ul>

<b>Pass-Criteria</b>	<p>The following should be visible to the end user after the delivery of the SG</p> <ul style="list-style-type: none"> <li>• The service “PayTvChannel” is displayed with “Programme” schedule from start to end time, available as “Discount” purchase, and price information.</li> <li>• “Programme” can be viewed by the end user.</li> </ul> <p>The following should be observable for the test tool</p> <ul style="list-style-type: none"> <li>• The test tool receives HTTP request from the end user to subscribe to service “TvChannel”.</li> </ul>
----------------------	---

### 5.9.6 DRM Profile and ISMACryp encryption via broadcast channel (optional)

<b>Test Case Id</b>	BCAST-1.0-ServProt-conf-221
<b>Test Object</b>	BCAST Terminal
<b>Test Purpose</b>	<p>with a terminal having received a service guide containing a service with purchase information on the Service Guide Delivery Channel and listening for an ISMACryp encrypted data stream on the broadcast channel</p> <p>when the terminal subscribes to that service on the interactive channel Service Request/Response message exchange</p> <p>then the terminal is able to receive, decrypt, and display the data stream correctly</p>
<b>Specification Reference</b>	[BCAST10–ServContProt] Section 6.8.1, 9.3.
<b>SCR Reference</b>	<p><b>Primary:</b> BCAST-ContentLayer-C-009 (O)</p> <p><b>Secondary:</b> BCAST-SPCP-C-002 (O), BCAST-SDP-C-014 (O), BCAST-CP_Form-C-023 (O)</p> <p>DRM profile: BCAST-TerminalCapability-C-004 (O), BCAST-SPCP-C-006 (O), BCAST-STKM -C-011 (O), BCAST-LTKM_DRM-C-013 (O), BCAST-CP_RTP_DRM-C-019 (O)</p> <p>See also Appendix C.1</p>
<b>Tool</b>	BCAST conformance test tool
<b>Test code</b>	None

<p><b>Preconditions</b></p>	<p>Service guide cache of terminal is erased</p> <p>Terminal is configured to listen to BCAST service guide announcements and delivery on the broadcast channel</p> <p>Access point information for service guide entry point is configured in test tool</p> <p>This test cases uses the following SG fragment instantiations:</p> <ul style="list-style-type: none"> <li>• Service fragment with Name="PayTvChannel "</li> <li>• Content fragment with Name="Programme", and StartTime and EndTime elements indicating values within the time of test</li> <li>• Schedule fragment for content fragment with same values for startTime and endTime in the presentationWindow element</li> <li>• Access fragment for schedule fragment with KeyManagmentSystem, EncryptionType set to ISMACryp, and a reference to the Session Description fragment</li> <li>• Session Description fragment containing SDP for "Programme" and the service protection information for ISMACryp</li> <li>• PurchaseItem fragment for service fragment with Description "ISMACryp" element</li> <li>• PurchaseData fragment for purchaseItem fragment with PriceInfo and Description "Discount" elements</li> <li>• PurchaseChannel fragment for purchaseItem fragment with PurchaseURL pointing to a subscription site</li> </ul> <p>Note: All the fragments are associated with the same Service fragment and are sent in the same service guide delivery.</p>
<p><b>Test Procedure</b></p>	<ul style="list-style-type: none"> <li>• Set up the test tool to produce BCAST service guide announcement and delivery using broadcast channel.</li> <li>• Setup the test tool to stream via ISMACryp encrypted audio and video for "Programme" as well as key stream on broadcast channel</li> <li>• Setup the SEK delivery to the terminal via DRM 2.0 ROAP (DRM)</li> <li>• Activate the BCAST application of the terminal</li> <li>• Request from BCAST application on terminal to get the service guide (optional)</li> <li>• Browse the SG in the terminal</li> <li>• Setup the test tool to authenticate and accept subscription request for the Service "PayTvChannel" from the terminal via interactive channel</li> <li>• Purchase "TvChannel" on terminal</li> <li>• Access "TvChannel" on terminal</li> </ul>



<b>Pass-Criteria</b>	<p>The following should be visible to the end user after the delivery of the SG</p> <ul style="list-style-type: none"><li>• The service “PayTvChannel” is displayed with “Programme” schedule from start to end time, available as “Discount” purchase, and price information.</li><li>• “Programme” can be viewed by the end user.</li></ul> <p>The following should be observable for the test tool</p> <ul style="list-style-type: none"><li>• The test tool receives HTTP request from the end user to subscribe to service “TvChannel”.</li></ul>
----------------------	--

## Appendix A. Change History

(Informative)

### A.1 Approved Version History

Reference	Date	Description
n/a	n/a	No prior version –or- No previous version within OMA

### A.2 Draft/Candidate Version 1.0 History

Document Identifier	Date	Sections	Description
Draft Version OMA-ETS-BCAST_CON_Client-V1.0	24 Jan 2007	all	First Draft ETS that has been uploaded to the PD areas as basis for new test cases
	12 Mar 2007	All	Input IOP-BRO 2007-0022 included.
	21 Mar 2007	4	Introduction part updated.
	24 <sup>th</sup> Apr 2007	5.2.x, 5.1.2.1, 5.1.2.2	Server test cases removed, Following CRs included: OMA-IOP-BRO-2007-0076, OMA-IOP-BRO-2007-0061.
	20 <sup>th</sup> Jun 2007	All	SCR and specification references added. Test case numbering added. Appendix D added. Following CRs included: OMA-IOP-BRO-2007-0083, OMA-IOP-BRO-2007-0059R01
	01 Aug 2007	All	SCR references updated.
	21 Aug 2007	All	Updates of ETSI Phase1 feedback
	24 Aug 2007	All	IOP WG agreed. Applying ETS template. Preparation for TP candidate approval as doc# OMA-TP-2007-0346- INP_ETS_BCAST_CON_V1_0_for_Candidate_Approval
Candidate Version OMA-ETS-BCAST_CON_Client-V1.0	25 Sep 2007	n/a	Status changed to Candidate (TP R&A from 2007-09-12 to 2007-09-25) TP# OMA-TP-2007-0346- INP_ETS_BCAST_CON_V1_0_for_Candidate_Approval
Draft Versions OMA-ETS-BCAST_CON_Client-V1.0	01 Oct 2007	5.1.2, 5.1.3, 5.1.4	Incorporated CRs: OMA-IOP-BRO-2007-0135 OMA-IOP-BRO-2007-0136 OMA-IOP-BRO-2007-0140 OMA-IOP-BRO-2007-0192 OMA-IOP-BRO-2007-0193 OMA-IOP-BRO-2007-0194 OMA-IOP-BRO-2007-0195 OMA-IOP-BRO-2007-0196 OMA-IOP-BRO-2007-0197 OMA-IOP-BRO-2007-0198 OMA-IOP-BRO-2007-0199 OMA-IOP-BRO-2007-0200R01 OMA-IOP-BRO-2007-0201 OMA-IOP-BRO-2007-0202 OMA-IOP-BRO-2007-0203 OMA-IOP-BRO-2007-0204 OMA-IOP-BRO-2007-0205R02 OMA-IOP-BRO-2007-0206 OMA-IOP-BRO-2007-0207 OMA-IOP-BRO-2007-0208 OMA-IOP-BRO-2007-0215 OMA-IOP-BRO-2007-0216 OMA-IOP-BRO-2007-0217 OMA-IOP-BRO-2007-0218 OMA-IOP-BRO-2007-0219

			OMA-IOP-BRO-2007-0220 OMA-IOP-BRO-2007-0221 OMA-IOP-BRO-2007-0222 OMA-IOP-BRO-2007-0223 OMA-IOP-BRO-2007-0224 OMA-IOP-BRO-2007-0225 OMA-IOP-BRO-2007-0227R01 OMA-IOP-BRO-2007-0230R01 OMA-IOP-BRO-2007-0231R01
	04 Oct 2007	n/a	Correction of the status of the doc. (C -> D)
	12 Dec 2007	5.1.11	OMA-IOP-BRO-2007-0248R02
Draft Versions OMA-ETS-BCAST_CON_Client-V1.0	31 Jan 2008	All	Incorporated CRs: OMA-IOP-BRO-2008-0002R01
	13 Mar 2008	All	Incorporated CRs: OMA-IOP-BRO-2008-0050R01 OMA-IOP-BRO-2008-0051 OMA-IOP-BRO-2007-0289R02 Editorial updates
Candidate Version OMA-ETS-BCAST_CON_Client-V1.0	21 Apr 2008	n/a	Status changed to Candidate TP# OMA-TP-2008-0075R02- INP_BCAST_CON_Client_1.0_ETS_for_Candidate_reapproval
Draft Versions OMA-ETS-BCAST_CON_Client-V1.0	22 Apr 2008	5.10.2.	Incorporated CRs: OMA-IOP-BRO-2008-0067 OMA-IOP-BRO-2008-0083R01 OMA-IOP-BRO-2008-0079 OMA-IOP-BRO-2008-0081 OMA-IOP-BRO-2008-0085
	19 May 2008	5.9.1.8, 5.9.2.8, 5.9.3.8	Incorporated CR: OMA-IOP-BRO-2008-0069R03
	30 May 2008	5.2.10	Incorporated CR: OMA-IOP-BRO-2008-0095
Candidate Version OMA-ETS-BCAST_CON_Client-V1.0	17 Jun 2008	n/a	Status changed to Candidate TP# OMA-TP-2008-0211R01- INP_BCAST_1.0_CON_ETS_for_Candidate_re_approval
Draft Versions OMA-ETS-BCAST_CON_Client-V1.0	25 Jun 2008	5.2.10	Incorporated CR: OMA-IOP-BRO-2008-0102R01
Candidate Version OMA-ETS-BCAST_CON_Client-V1.0	07 Jul 2008	n/a	Status changed to Candidate TP# <a href="http://www.openmobilealliance.org/ftp/TP/ID/08/OMA-TP-2008-0274-INP_BCAST_1.0_CON_ETS_for_notification.zip">http://www.openmobilealliance.org/ftp/TP/ID/08/OMA-TP-2008-0274- INP_BCAST_1.0_CON_ETS_for_notification.zip</a>
Draft Versions OMA-ETS-BCAST_CON_Client-V1.0	07 Nov 2008	5.5.1	Incorporated CR: OMA-IOP-BRO-2008-0179
Candidate Version OMA-ETS-BCAST_CON_Client-V1.0	17 Nov 2008	n/a	Status changed to Candidate TP# OMA-TP-2008-0451- INP_BCAST_1.0_CON_Client_ETS_for_notification

## Appendix B. Structure of the test Service Guide

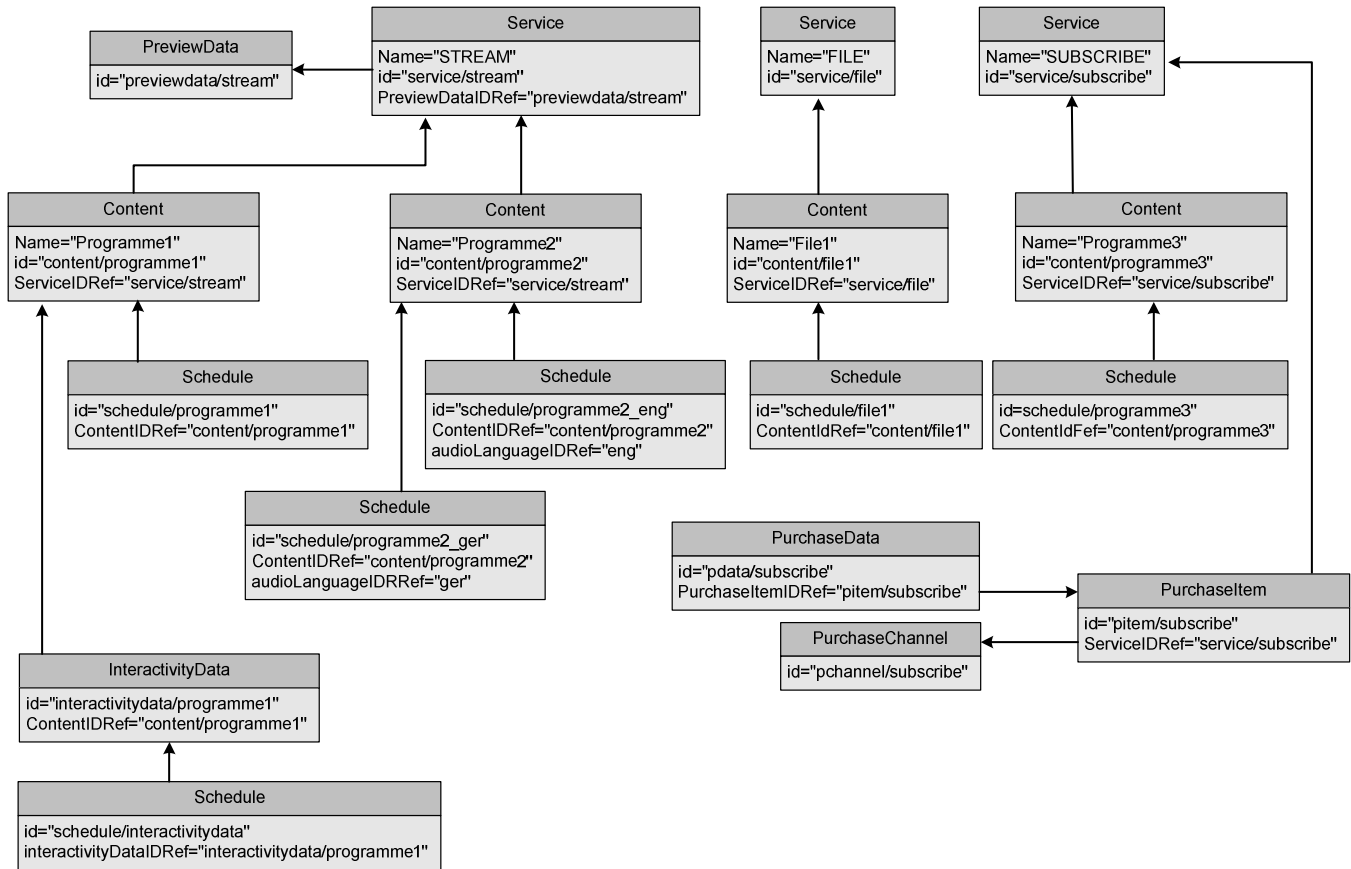


Figure 1: Structure of the Service Guide

## Appendix C. Adaptation Test Coverage (Informative)

### C.1 Conformance test coverage for Adaptation SCR's

Test Case id	Adaptation SCR Coverage		
	MBMS	DVB-H	BCMS
5.1.1	BCAST-MBMS-C-003 BCAST-MBMS-C-004 BCAST-MBMS-C-005 BCAST-MBMS-C-011 BCAST-MBMS-C-012 BCAST-MBMS-C-013 BCAST-MBMS-C-014 BCAST-MBMS-C-018	BCAST-DVBIPDC-C-001 BCAST-DVBIPDC-C-002 BCAST-DVBIPDC-C-009 BCAST-DVBIPDC-C-010 BCAST-DVBIPDC-C-012	
5.1.2	BCAST-MBMS-C-003 BCAST-MBMS-C-004 BCAST-MBMS-C-005 BCAST-MBMS-C-010 BCAST-MBMS-C-014 BCAST-MBMS-C-018		
5.2.1	BCAST-MBMS-C-003 BCAST-MBMS-C-004 BCAST-MBMS-C-005 BCAST-MBMS-C-011 BCAST-MBMS-C-012 BCAST-MBMS-C-013 BCAST-MBMS-C-014 BCAST-MBMS-C-018	BCAST-DVBIPDC-C-001 BCAST-DVBIPDC-C-002 BCAST-DVBIPDC-C-009 BCAST-DVBIPDC-C-010 BCAST-DVBIPDC-C-012	
5.2.2	BCAST-MBMS-C-003 BCAST-MBMS-C-004 BCAST-MBMS-C-005 BCAST-MBMS-C-011 BCAST-MBMS-C-012 BCAST-MBMS-C-013 BCAST-MBMS-C-014 BCAST-MBMS-C-018	BCAST-DVBIPDC-C-001 BCAST-DVBIPDC-C-002 BCAST-DVBIPDC-C-009 BCAST-DVBIPDC-C-010 BCAST-DVBIPDC-C-012	
5.2.3	BCAST-MBMS-C-003 BCAST-MBMS-C-004 BCAST-MBMS-C-005 BCAST-MBMS-C-011 BCAST-MBMS-C-012 BCAST-MBMS-C-013 BCAST-MBMS-C-014 BCAST-MBMS-C-018	BCAST-DVBIPDC-C-001 BCAST-DVBIPDC-C-002 BCAST-DVBIPDC-C-009 BCAST-DVBIPDC-C-010 BCAST-DVBIPDC-C-012	
5.2.4	BCAST-MBMS-C-003 BCAST-MBMS-C-004 BCAST-MBMS-C-005 BCAST-MBMS-C-011 BCAST-MBMS-C-012 BCAST-MBMS-C-013 BCAST-MBMS-C-014 BCAST-MBMS-C-018	BCAST-DVBIPDC-C-001 BCAST-DVBIPDC-C-002 BCAST-DVBIPDC-C-009 BCAST-DVBIPDC-C-010 BCAST-DVBIPDC-C-012	
5.2.5	BCAST-MBMS-C-002 BCAST-MBMS-C-003 BCAST-MBMS-C-004	BCAST-DVBIPDC-C-001 BCAST-DVBIPDC-C-002 BCAST-DVBIPDC-C-006	

	BCAST-MBMS-C-005 BCAST-MBMS-C-011 BCAST-MBMS-C-012 BCAST-MBMS-C-013 BCAST-MBMS-C-014 BCAST-MBMS-C-018	BCAST-DVBIPDC-C-009 BCAST-DVBIPDC-C-010 BCAST-DVBIPDC-C-011 BCAST-DVBIPDC-C-012 BCAST-DVBIPDC-C-021	
5.2.6	BCAST-MBMS-C-003 BCAST-MBMS-C-004 BCAST-MBMS-C-005 BCAST-MBMS-C-011 BCAST-MBMS-C-012 BCAST-MBMS-C-013 BCAST-MBMS-C-014 BCAST-MBMS-C-018	BCAST-DVBIPDC-C-001 BCAST-DVBIPDC-C-002 BCAST-DVBIPDC-C-009 BCAST-DVBIPDC-C-010 BCAST-DVBIPDC-C-012	
5.2.7	BCAST-MBMS-C-002 BCAST-MBMS-C-003 BCAST-MBMS-C-004 BCAST-MBMS-C-005 BCAST-MBMS-C-011 BCAST-MBMS-C-012 BCAST-MBMS-C-013 BCAST-MBMS-C-014 BCAST-MBMS-C-018	BCAST-DVBIPDC-C-001 BCAST-DVBIPDC-C-002 BCAST-DVBIPDC-C-006 BCAST-DVBIPDC-C-009 BCAST-DVBIPDC-C-010 BCAST-DVBIPDC-C-011 BCAST-DVBIPDC-C-012 BCAST-DVBIPDC-C-021	
5.2.8	BCAST-MBMS-C-003 BCAST-MBMS-C-004 BCAST-MBMS-C-005 BCAST-MBMS-C-010 BCAST-MBMS-C-014 BCAST-MBMS-C-018		
5.2.9	BCAST-MBMS-C-003 BCAST-MBMS-C-004 BCAST-MBMS-C-005 BCAST-MBMS-C-010 BCAST-MBMS-C-014 BCAST-MBMS-C-018		
5.2.10	BCAST-MBMS-C-003 BCAST-MBMS-C-004 BCAST-MBMS-C-005 BCAST-MBMS-C-010 BCAST-MBMS-C-014 BCAST-MBMS-C-018		
5.2.11	BCAST-MBMS-C-003 BCAST-MBMS-C-004 BCAST-MBMS-C-005 BCAST-MBMS-C-010 BCAST-MBMS-C-014 BCAST-MBMS-C-018		
5.2.12	BCAST-MBMS-C-003 BCAST-MBMS-C-004 BCAST-MBMS-C-005 BCAST-MBMS-C-010 BCAST-MBMS-C-014 BCAST-MBMS-C-018		
5.2.13	BCAST-MBMS-C-003 BCAST-MBMS-C-004 BCAST-MBMS-C-005		

	BCAST-MBMS-C-010 BCAST-MBMS-C-014 BCAST-MBMS-C-018		
5.2.14	BCAST-MBMS-C-002 BCAST-MBMS-C-003 BCAST-MBMS-C-004 BCAST-MBMS-C-005 BCAST-MBMS-C-010 BCAST-MBMS-C-014 BCAST-MBMS-C-018		
5.3.1.1	BCAST-MBMS-C-003 BCAST-MBMS-C-004 BCAST-MBMS-C-005 BCAST-MBMS-C-018	BCAST-DVBIPDC-C-001 BCAST-DVBIPDC-C-002 BCAST-DVBIPDC-C-006 BCAST-DVBIPDC-C-009 BCAST-DVBIPDC-C-010 BCAST-DVBIPDC-C-011 BCAST-DVBIPDC-C-012 BCAST-DVBIPDC-C-020 BCAST-DVBIPDC-C-021	
5.3.1.2	BCAST-MBMS-C-003 BCAST-MBMS-C-004 BCAST-MBMS-C-005 BCAST-MBMS-C-011 BCAST-MBMS-C-012 BCAST-MBMS-C-018	BCAST-DVBIPDC-C-001 BCAST-DVBIPDC-C-002 BCAST-DVBIPDC-C-006 BCAST-DVBIPDC-C-009 BCAST-DVBIPDC-C-010 BCAST-DVBIPDC-C-011 BCAST-DVBIPDC-C-012 BCAST-DVBIPDC-C-020 BCAST-DVBIPDC-C-021	
5.3.2	BCAST-MBMS-C-003 BCAST-MBMS-C-004 BCAST-MBMS-C-005 BCAST-MBMS-C-018	BCAST-DVBIPDC-C-001 BCAST-DVBIPDC-C-002 BCAST-DVBIPDC-C-006 BCAST-DVBIPDC-C-009 BCAST-DVBIPDC-C-010 BCAST-DVBIPDC-C-011 BCAST-DVBIPDC-C-012 BCAST-DVBIPDC-C-020 BCAST-DVBIPDC-C-021	
5.3.3	BCAST-MBMS-C-003 BCAST-MBMS-C-004 BCAST-MBMS-C-005 BCAST-MBMS-C-011 BCAST-MBMS-C-012 BCAST-MBMS-C-016 BCAST-MBMS-C-018	BCAST-DVBIPDC-C-001 BCAST-DVBIPDC-C-002 BCAST-DVBIPDC-C-006 BCAST-DVBIPDC-C-009 BCAST-DVBIPDC-C-010 BCAST-DVBIPDC-C-011 BCAST-DVBIPDC-C-012 BCAST-DVBIPDC-C-020 BCAST-DVBIPDC-C-021	
5.3.4	BCAST-MBMS-C-003 BCAST-MBMS-C-004 BCAST-MBMS-C-005 BCAST-MBMS-C-011 BCAST-MBMS-C-012 BCAST-MBMS-C-018	BCAST-DVBIPDC-C-001 BCAST-DVBIPDC-C-002 BCAST-DVBIPDC-C-006 BCAST-DVBIPDC-C-009 BCAST-DVBIPDC-C-010 BCAST-DVBIPDC-C-011 BCAST-DVBIPDC-C-012 BCAST-DVBIPDC-C-020 BCAST-DVBIPDC-C-021	
5.3.5	BCAST-MBMS-C-003 BCAST-MBMS-C-004 BCAST-MBMS-C-005 BCAST-MBMS-C-011	BCAST-DVBIPDC-C-001 BCAST-DVBIPDC-C-002 BCAST-DVBIPDC-C-006 BCAST-DVBIPDC-C-009	

	BCAST-MBMS-C-012 BCAST-MBMS-C-017 BCAST-MBMS-C-018	BCAST-DVBIPDC-C-010 BCAST-DVBIPDC-C-011 BCAST-DVBIPDC-C-012 BCAST-DVBIPDC-C-020 BCAST-DVBIPDC-C-021	
5.3.6	BCAST-MBMS-C-003 BCAST-MBMS-C-004 BCAST-MBMS-C-005 BCAST-MBMS-C-011 BCAST-MBMS-C-012 BCAST-MBMS-C-017 BCAST-MBMS-C-018	BCAST-DVBIPDC-C-001 BCAST-DVBIPDC-C-002 BCAST-DVBIPDC-C-006 BCAST-DVBIPDC-C-009 BCAST-DVBIPDC-C-010 BCAST-DVBIPDC-C-011 BCAST-DVBIPDC-C-012 BCAST-DVBIPDC-C-020 BCAST-DVBIPDC-C-021	
5.3.7	BCAST-MBMS-C-003 BCAST-MBMS-C-004 BCAST-MBMS-C-005 BCAST-MBMS-C-011 BCAST-MBMS-C-012 BCAST-MBMS-C-018	BCAST-DVBIPDC-C-001 BCAST-DVBIPDC-C-002 BCAST-DVBIPDC-C-006 BCAST-DVBIPDC-C-009 BCAST-DVBIPDC-C-010 BCAST-DVBIPDC-C-011 BCAST-DVBIPDC-C-012 BCAST-DVBIPDC-C-020 BCAST-DVBIPDC-C-021	
5.3.8	BCAST-MBMS-C-002 BCAST-MBMS-C-003 BCAST-MBMS-C-004 BCAST-MBMS-C-005 BCAST-MBMS-C-012 BCAST-MBMS-C-018	BCAST-DVBIPDC-C-001 BCAST-DVBIPDC-C-002 BCAST-DVBIPDC-C-006 BCAST-DVBIPDC-C-009 BCAST-DVBIPDC-C-010 BCAST-DVBIPDC-C-011 BCAST-DVBIPDC-C-012 BCAST-DVBIPDC-C-020 BCAST-DVBIPDC-C-021	
5.3.9	BCAST-MBMS-C-002 BCAST-MBMS-C-003 BCAST-MBMS-C-004 BCAST-MBMS-C-005 BCAST-MBMS-C-012 BCAST-MBMS-C-018	BCAST-DVBIPDC-C-001 BCAST-DVBIPDC-C-002 BCAST-DVBIPDC-C-006 BCAST-DVBIPDC-C-009 BCAST-DVBIPDC-C-010 BCAST-DVBIPDC-C-011 BCAST-DVBIPDC-C-012 BCAST-DVBIPDC-C-020 BCAST-DVBIPDC-C-021	
5.3.10	BCAST-MBMS-C-002 BCAST-MBMS-C-003 BCAST-MBMS-C-004 BCAST-MBMS-C-005 BCAST-MBMS-C-012 BCAST-MBMS-C-018	BCAST-DVBIPDC-C-001 BCAST-DVBIPDC-C-002 BCAST-DVBIPDC-C-006 BCAST-DVBIPDC-C-009 BCAST-DVBIPDC-C-010 BCAST-DVBIPDC-C-011 BCAST-DVBIPDC-C-012 BCAST-DVBIPDC-C-020 BCAST-DVBIPDC-C-021	
5.3.11	BCAST-MBMS-C-002 BCAST-MBMS-C-003 BCAST-MBMS-C-004 BCAST-MBMS-C-005 BCAST-MBMS-C-012 BCAST-MBMS-C-017 BCAST-MBMS-C-018	BCAST-DVBIPDC-C-001 BCAST-DVBIPDC-C-002 BCAST-DVBIPDC-C-006 BCAST-DVBIPDC-C-009 BCAST-DVBIPDC-C-010 BCAST-DVBIPDC-C-011 BCAST-DVBIPDC-C-012 BCAST-DVBIPDC-C-020 BCAST-DVBIPDC-C-021	
5.4.1	BCAST-MBMS-C-003	BCAST-DVBIPDC-C-001	



	BCAST-MBMS-C-004 BCAST-MBMS-C-005 BCAST-MBMS-C-018	BCAST-DVBIPDC-C-002 BCAST-DVBIPDC-C-005 BCAST-DVBIPDC-C-007 BCAST-DVBIPDC-C-009 BCAST-DVBIPDC-C-010 BCAST-DVBIPDC-C-011 BCAST-DVBIPDC-C-012	
5.4.2	BCAST-MBMS-C-003 BCAST-MBMS-C-004 BCAST-MBMS-C-005 BCAST-MBMS-C-018	BCAST-DVBIPDC-C-001 BCAST-DVBIPDC-C-002 BCAST-DVBIPDC-C-005 BCAST-DVBIPDC-C-007 BCAST-DVBIPDC-C-009 BCAST-DVBIPDC-C-010 BCAST-DVBIPDC-C-011 BCAST-DVBIPDC-C-012	
5.4.3	BCAST-MBMS-C-003 BCAST-MBMS-C-004 BCAST-MBMS-C-005 BCAST-MBMS-C-018	BCAST-DVBIPDC-C-001 BCAST-DVBIPDC-C-002 BCAST-DVBIPDC-C-005 BCAST-DVBIPDC-C-007 BCAST-DVBIPDC-C-009 BCAST-DVBIPDC-C-010 BCAST-DVBIPDC-C-011 BCAST-DVBIPDC-C-012	
5.10.1.1	BCAST-MBMS-C-020	BCAST-DVBIPDC-C-001 BCAST-DVBIPDC-C-002 BCAST-DVBIPDC-C-009 BCAST-DVBIPDC-C-010 BCAST-DVBIPDC-C-012 BCAST-DVBIPDC-C-015	
5.10.1.2	BCAST-MBMS-C-020	BCAST-DVBIPDC-C-001 BCAST-DVBIPDC-C-002 BCAST-DVBIPDC-C-009 BCAST-DVBIPDC-C-010 BCAST-DVBIPDC-C-012 BCAST-DVBIPDC-C-015	
5.10.1.3	BCAST-MBMS-C-003 BCAST-MBMS-C-004 BCAST-MBMS-C-005 BCAST-MBMS-C-006 BCAST-MBMS-C-011 BCAST-MBMS-C-018 BCAST-MBMS-C-020	BCAST-DVBIPDC-C-001 BCAST-DVBIPDC-C-002 BCAST-DVBIPDC-C-009 BCAST-DVBIPDC-C-010 BCAST-DVBIPDC-C-012 BCAST-DVBIPDC-C-015	
5.10.1.4	BCAST-MBMS-C-003 BCAST-MBMS-C-004 BCAST-MBMS-C-005 BCAST-MBMS-C-006 BCAST-MBMS-C-018 BCAST-MBMS-C-020	BCAST-DVBIPDC-C-001 BCAST-DVBIPDC-C-002 BCAST-DVBIPDC-C-009 BCAST-DVBIPDC-C-010 BCAST-DVBIPDC-C-012 BCAST-DVBIPDC-C-015 BCAST-DVBIPDC-C-016 BCAST-DVBIPDC-C-017	
5.10.1.5	BCAST-MBMS-C-003 BCAST-MBMS-C-004 BCAST-MBMS-C-005 BCAST-MBMS-C-006 BCAST-MBMS-C-018 BCAST-MBMS-C-020	BCAST-DVBIPDC-C-001 BCAST-DVBIPDC-C-002 BCAST-DVBIPDC-C-009 BCAST-DVBIPDC-C-010 BCAST-DVBIPDC-C-012 BCAST-DVBIPDC-C-015 BCAST-DVBIPDC-C-016 BCAST-DVBIPDC-C-017	
5.10.1.6	BCAST-MBMS-C-003 BCAST-MBMS-C-004	BCAST-DVBIPDC-C-001 BCAST-DVBIPDC-C-002	

	BCAST-MBMS-C-005 BCAST-MBMS-C-006 BCAST-MBMS-C-018 BCAST-MBMS-C-020 BCAST-MBMS-C-022	BCAST-DVBIPDC-C-009 BCAST-DVBIPDC-C-010 BCAST-DVBIPDC-C-012 BCAST-DVBIPDC-C-015 BCAST-DVBIPDC-C-016 BCAST-DVBIPDC-C-017	
5.10.1.7	BCAST-MBMS-C-003 BCAST-MBMS-C-004 BCAST-MBMS-C-005 BCAST-MBMS-C-006 BCAST-MBMS-C-018 BCAST-MBMS-C-020	BCAST-DVBIPDC-C-001 BCAST-DVBIPDC-C-002 BCAST-DVBIPDC-C-009 BCAST-DVBIPDC-C-010 BCAST-DVBIPDC-C-012 BCAST-DVBIPDC-C-015	
5.10.2.1	BCAST-MBMS-C-003 BCAST-MBMS-C-004 BCAST-MBMS-C-005 BCAST-MBMS-C-006 BCAST-MBMS-C-018 BCAST-MBMS-C-020	BCAST-DVBIPDC-C-001 BCAST-DVBIPDC-C-002 BCAST-DVBIPDC-C-009 BCAST-DVBIPDC-C-010 BCAST-DVBIPDC-C-012 BCAST-DVBIPDC-C-015	
5.10.2.2	BCAST-MBMS-C-003 BCAST-MBMS-C-004 BCAST-MBMS-C-005 BCAST-MBMS-C-006 BCAST-MBMS-C-018 BCAST-MBMS-C-020	BCAST-DVBIPDC-C-001 BCAST-DVBIPDC-C-002 BCAST-DVBIPDC-C-009 BCAST-DVBIPDC-C-010 BCAST-DVBIPDC-C-012 BCAST-DVBIPDC-C-015	
5.10.2.3	BCAST-MBMS-C-003 BCAST-MBMS-C-004 BCAST-MBMS-C-005 BCAST-MBMS-C-006 BCAST-MBMS-C-018 BCAST-MBMS-C-020	BCAST-DVBIPDC-C-001 BCAST-DVBIPDC-C-002 BCAST-DVBIPDC-C-009 BCAST-DVBIPDC-C-010 BCAST-DVBIPDC-C-012 BCAST-DVBIPDC-C-015	
5.10.2.4	BCAST-MBMS-C-003 BCAST-MBMS-C-004 BCAST-MBMS-C-005 BCAST-MBMS-C-006 BCAST-MBMS-C-018 BCAST-MBMS-C-020	BCAST-DVBIPDC-C-001 BCAST-DVBIPDC-C-002 BCAST-DVBIPDC-C-009 BCAST-DVBIPDC-C-010 BCAST-DVBIPDC-C-012 BCAST-DVBIPDC-C-015 BCAST-DVBIPDC-C-016 BCAST-DVBIPDC-C-018	
5.10.2.5	BCAST-MBMS-C-003 BCAST-MBMS-C-004 BCAST-MBMS-C-005 BCAST-MBMS-C-006 BCAST-MBMS-C-018 BCAST-MBMS-C-020	BCAST-DVBIPDC-C-001 BCAST-DVBIPDC-C-002 BCAST-DVBIPDC-C-009 BCAST-DVBIPDC-C-010 BCAST-DVBIPDC-C-012 BCAST-DVBIPDC-C-015 BCAST-DVBIPDC-C-016 BCAST-DVBIPDC-C-018	
5.10.2.6	BCAST-MBMS-C-003 BCAST-MBMS-C-004 BCAST-MBMS-C-005 BCAST-MBMS-C-006 BCAST-MBMS-C-018 BCAST-MBMS-C-020 BCAST-MBMS-C-023	BCAST-DVBIPDC-C-001 BCAST-DVBIPDC-C-002 BCAST-DVBIPDC-C-009 BCAST-DVBIPDC-C-010 BCAST-DVBIPDC-C-012 BCAST-DVBIPDC-C-015 BCAST-DVBIPDC-C-016 BCAST-DVBIPDC-C-018	
5.10.2.7	BCAST-MBMS-C-003 BCAST-MBMS-C-004 BCAST-MBMS-C-005 BCAST-MBMS-C-006 BCAST-MBMS-C-018	BCAST-DVBIPDC-C-001 BCAST-DVBIPDC-C-002 BCAST-DVBIPDC-C-009 BCAST-DVBIPDC-C-010 BCAST-DVBIPDC-C-012	

	BCAST-MBMS-C-020	BCAST-DVBIPDC-C-015	
5.10.3.1	BCAST-MBMS-C-003 BCAST-MBMS-C-004 BCAST-MBMS-C-005 BCAST-MBMS-C-006 BCAST-MBMS-C-018 BCAST-MBMS-C-020	BCAST-DVBIPDC-C-001 BCAST-DVBIPDC-C-002 BCAST-DVBIPDC-C-009 BCAST-DVBIPDC-C-010 BCAST-DVBIPDC-C-012 BCAST-DVBIPDC-C-015	
5.10.3.2	BCAST-MBMS-C-003 BCAST-MBMS-C-004 BCAST-MBMS-C-005 BCAST-MBMS-C-006 BCAST-MBMS-C-018 BCAST-MBMS-C-020	BCAST-DVBIPDC-C-001 BCAST-DVBIPDC-C-002 BCAST-DVBIPDC-C-009 BCAST-DVBIPDC-C-010 BCAST-DVBIPDC-C-012 BCAST-DVBIPDC-C-015	
5.10.3.3	BCAST-MBMS-C-003 BCAST-MBMS-C-004 BCAST-MBMS-C-005 BCAST-MBMS-C-006 BCAST-MBMS-C-018 BCAST-MBMS-C-020	BCAST-DVBIPDC-C-001 BCAST-DVBIPDC-C-002 BCAST-DVBIPDC-C-009 BCAST-DVBIPDC-C-010 BCAST-DVBIPDC-C-012 BCAST-DVBIPDC-C-015	
5.10.3.4	BCAST-MBMS-C-003 BCAST-MBMS-C-004 BCAST-MBMS-C-005 BCAST-MBMS-C-006 BCAST-MBMS-C-018 BCAST-MBMS-C-020	BCAST-DVBIPDC-C-001 BCAST-DVBIPDC-C-002 BCAST-DVBIPDC-C-009 BCAST-DVBIPDC-C-010 BCAST-DVBIPDC-C-012 BCAST-DVBIPDC-C-015 BCAST-DVBIPDC-C-016 BCAST-DVBIPDC-C-019	
5.10.3.5	BCAST-MBMS-C-003 BCAST-MBMS-C-004 BCAST-MBMS-C-005 BCAST-MBMS-C-006 BCAST-MBMS-C-018 BCAST-MBMS-C-020	BCAST-DVBIPDC-C-001 BCAST-DVBIPDC-C-002 BCAST-DVBIPDC-C-009 BCAST-DVBIPDC-C-010 BCAST-DVBIPDC-C-012 BCAST-DVBIPDC-C-015 BCAST-DVBIPDC-C-016 BCAST-DVBIPDC-C-019	
5.10.3.6	BCAST-MBMS-C-003 BCAST-MBMS-C-004 BCAST-MBMS-C-005 BCAST-MBMS-C-006 BCAST-MBMS-C-018 BCAST-MBMS-C-020 BCAST-MBMS-C-024	BCAST-DVBIPDC-C-001 BCAST-DVBIPDC-C-002 BCAST-DVBIPDC-C-009 BCAST-DVBIPDC-C-010 BCAST-DVBIPDC-C-012 BCAST-DVBIPDC-C-015 BCAST-DVBIPDC-C-016 BCAST-DVBIPDC-C-019	
5.10.3.7	BCAST-MBMS-C-003 BCAST-MBMS-C-004 BCAST-MBMS-C-005 BCAST-MBMS-C-006 BCAST-MBMS-C-018 BCAST-MBMS-C-020	BCAST-DVBIPDC-C-001 BCAST-DVBIPDC-C-002 BCAST-DVBIPDC-C-009 BCAST-DVBIPDC-C-010 BCAST-DVBIPDC-C-012 BCAST-DVBIPDC-C-015	
5.10.4		BCAST-DVBIPDC-C-001 BCAST-DVBIPDC-C-002 BCAST-DVBIPDC-C-003 BCAST-DVBIPDC-C-004 BCAST-DVBIPDC-C-006 BCAST-DVBIPDC-C-009 BCAST-DVBIPDC-C-010 BCAST-DVBIPDC-C-011 BCAST-DVBIPDC-C-012 BCAST-DVBIPDC-C-013	

		BCAST-DVBIPDC-C-014 BCAST-DVBIPDC-C-016 BCAST-DVBIPDC-C-018 BCAST-DVBIPDC-C-021	
5.10.5		BCAST-DVBIPDC-C-001 BCAST-DVBIPDC-C-002 BCAST-DVBIPDC-C-003 BCAST-DVBIPDC-C-004 BCAST-DVBIPDC-C-006 BCAST-DVBIPDC-C-009 BCAST-DVBIPDC-C-010 BCAST-DVBIPDC-C-011 BCAST-DVBIPDC-C-012 BCAST-DVBIPDC-C-013 BCAST-DVBIPDC-C-014 BCAST-DVBIPDC-C-016 BCAST-DVBIPDC-C-017 BCAST-DVBIPDC-C-021	
5.10.6		BCAST-DVBIPDC-C-001 BCAST-DVBIPDC-C-002 BCAST-DVBIPDC-C-003 BCAST-DVBIPDC-C-004 BCAST-DVBIPDC-C-006 BCAST-DVBIPDC-C-009 BCAST-DVBIPDC-C-010 BCAST-DVBIPDC-C-011 BCAST-DVBIPDC-C-012 BCAST-DVBIPDC-C-013 BCAST-DVBIPDC-C-014 BCAST-DVBIPDC-C-016 BCAST-DVBIPDC-C-019 BCAST-DVBIPDC-C-021	

## Appendix D. Test Algorithm and Parameters (Normative)

### D.1 Default algorithm

The algorithm used for authentication on the Test UICC SHALL be the XOR test algorithm described in [TS 34.108 v7] section 8.1.2.

### D.2 Default parameter

The values in the following table shall be used as default parameter on Test SIM card and in Test Code.

Name	Description	Type	Value
AuthA MF	Authentication Management Field (16 bits).	bitstring (16)	'0000000000000000'B
AuthK	Authentication Key (128 bits)	bitstring (128)	'0000000000000000100000 0100000001100000100000 0010100000110000001110 0001000000010010000101 0000010110000110000001 1010000111000001111'B
AuthN	Length of Extended value min 31, max 127 ([3GPP 34.108v7] cl. 8.1.2)	integer	31
AuthR AND	Authentication / Random challenge (128 bits)	bitstring (128)	'010101010101010101010 101010101010101010101 101010101010101010101 101010101010101010101 101010101010101010101 101010101010101010101'B
AuthS QN	Sequence number	bitstring (48)	'0000000000000000000000 0000000000000000000000 00000'B