



OMA Offline Charging Interface

Approved Version 1.0 – 04 Sep 2007

Open Mobile Alliance
OMA-TS-Charging_Offline-V1_0-20070904-A

Use of this document is subject to all of the terms and conditions of the Use Agreement located at <http://www.openmobilealliance.org/UseAgreement.html>.

Unless this document is clearly designated as an approved specification, this document is a work in process, is not an approved Open Mobile Alliance™ specification, and is subject to revision or removal without notice.

You may use this document or any part of the document for internal or educational purposes only, provided you do not modify, edit or take out of context the information in this document in any manner. Information contained in this document may be used, at your sole risk, for any purposes. You may not use this document in any other manner without the prior written permission of the Open Mobile Alliance. The Open Mobile Alliance authorizes you to copy this document, provided that you retain all copyright and other proprietary notices contained in the original materials on any copies of the materials and that you comply strictly with these terms. This copyright permission does not constitute an endorsement of the products or services. The Open Mobile Alliance assumes no responsibility for errors or omissions in this document.

Each Open Mobile Alliance member has agreed to use reasonable endeavors to inform the Open Mobile Alliance in a timely manner of Essential IPR as it becomes aware that the Essential IPR is related to the prepared or published specification. However, the members do not have an obligation to conduct IPR searches. The declared Essential IPR is publicly available to members and non-members of the Open Mobile Alliance and may be found on the “OMA IPR Declarations” list at <http://www.openmobilealliance.org/ipr.html>. The Open Mobile Alliance has not conducted an independent IPR review of this document and the information contained herein, and makes no representations or warranties regarding third party IPR, including without limitation patents, copyrights or trade secret rights. This document may contain inventions for which you must obtain licenses from third parties before making, using or selling the inventions. Defined terms above are set forth in the schedule to the Open Mobile Alliance Application Form.

NO REPRESENTATIONS OR WARRANTIES (WHETHER EXPRESS OR IMPLIED) ARE MADE BY THE OPEN MOBILE ALLIANCE OR ANY OPEN MOBILE ALLIANCE MEMBER OR ITS AFFILIATES REGARDING ANY OF THE IPR'S REPRESENTED ON THE “OMA IPR DECLARATIONS” LIST, INCLUDING, BUT NOT LIMITED TO THE ACCURACY, COMPLETENESS, VALIDITY OR RELEVANCE OF THE INFORMATION OR WHETHER OR NOT SUCH RIGHTS ARE ESSENTIAL OR NON-ESSENTIAL.

THE OPEN MOBILE ALLIANCE IS NOT LIABLE FOR AND HEREBY DISCLAIMS ANY DIRECT, INDIRECT, PUNITIVE, SPECIAL, INCIDENTAL, CONSEQUENTIAL, OR EXEMPLARY DAMAGES ARISING OUT OF OR IN CONNECTION WITH THE USE OF DOCUMENTS AND THE INFORMATION CONTAINED IN THE DOCUMENTS.

© 2007 Open Mobile Alliance Ltd. All Rights Reserved.

Used with the permission of the Open Mobile Alliance Ltd. under the terms set forth above.

Contents

1. SCOPE	5
2. REFERENCES	6
2.1 NORMATIVE REFERENCES	6
2.2 INFORMATIVE REFERENCES	6
3. TERMINOLOGY AND CONVENTIONS	7
3.1 CONVENTIONS	7
3.2 DEFINITIONS	7
3.3 ABBREVIATIONS	7
4. INTRODUCTION	8
5. MESSAGES IN CH-1	9
6. MESSAGE DESCRIPTIONS	10
6.1 CHARGING REQUEST MESSAGE	10
6.1.1 Event, and Session	11
6.1.2 EventRecord	12
6.1.3 StartRecord	12
6.1.4 InterimRecord	12
6.1.5 StopRecord	12
6.2 CHARGING RESPONSE MESSAGE	13
7. FLOWS	14
7.1 EVENT TRIGGERED CHARGING MODEL	14
7.2 SESSION BASED CHARGING MODEL	15
8. BINDINGS OF OMA CH-1 INTERFACE TO PROTOCOLS	17
8.1 BINDING TO DIAMETER	17
8.1.1 Basic Principles	17
8.1.2 Diameter Commands used on CH-1	17
8.1.2.1 Accounting Request Command	17
8.1.2.2 Accounting Answer Command	18
8.1.3 Mapping of OMA Data Elements to AVPs	18
8.1.4 Summary of AVPs used on CH-1	19
APPENDIX A. CHANGE HISTORY	21
A.1 APPROVED VERSION HISTORY	21
APPENDIX B. STATIC CONFORMANCE REQUIREMENTS (NORMATIVE)	22
B.1 SCR FOR THE CHARGING ENABLER USER	22
B.1.1 Generic SCR	22
B.1.2 SCR for Event Charging	22
B.1.3 SCR for Session Charging	22
B.2 SCR FOR THE CHARGING ENABLER	22
B.2.1 Generic SCR	22
B.2.2 SCR for Event Charging	22
B.2.3 SCR for Session Charging	23

Figures

Figure 1: Messages	9
--------------------------	---

Flows:

Flow 1: Offline charging request event-record generation	14
--	----

Flow 2: Offline charging session based charging	15
---	----

Tables

Table 1: Charging Request message	11
Table 2: EventRecord.....	12
Table 3: StartRecord	12
Table 4: InterimRecord.....	12
Table 5: StopRecord	13
Table 6: Charging Response message	13
Table 7: Bindings for Accounting.....	19
Table 8: Summary of AVPs used on CH-1	20

1. Scope

The charging architecture document [CHRG_AD] describes two different interfaces between the Charging Enabler User and the Charging Enabler: Offline charging interface (CH-1) and online charging interface (CH-2).

The scope of this document is to provide the technical specification of the CH-1 interface.

This document defines:

- The offline charging models, logical messages, and messages types of the CH-1 interface.
- The OMA Charging Data Elements used in the logical messages with their descriptions.
- The flow of information exchanged between the Charging Enabler User and the Charging Enabler through time in different scenarios.
- Bindings of OMA CH-1 logical messages to a specific protocol (e.g. Diameter protocol) and its protocol messages.

2. References

2.1 Normative References

- [CHRG_AD] “Charging Architecture”, Open Mobile Alliance™. OMA-AD-Charging-V1_0, URL: <http://www.openmobilealliance.org/>
- [CHRG_ONLINE] “OMA Online Charging Interface”, Open Mobile Alliance™. OMA-TS-Charging_Online-V1_0, URL: <http://www.openmobilealliance.org/>
- [IOPPROC] “OMA Interoperability Policy and Process”, Version 1.1, Open Mobile Alliance™, OMA-IOP-Process-V1_1, URL: <http://www.openmobilealliance.org/>
- [OMNA] “Open Mobile Numbering Authority”, Registries under category “OMA Charging”, URL: <http://www.openmobilealliance.org/tech/omna/index.htm>
- [RFC2119] “Key words for use in RFCs to Indicate Requirement Levels”, S. Bradner, March 1997, URL: <http://www.ietf.org/rfc/rfc2119.txt>
- [RFC3588] “Diameter Base Protocol”, P. Calhoun, J. Loughney, E. Guttman, G. Zorn, J. Arkko. September 2003, URL: <http://www.ietf.org/rfc/rfc3588.txt>
- [RFC4005] “Diameter Network Access Server Application”, P. Calhoun, G. Zorn, D. Spence, D. Mitton. August 2005, URL: <http://www.ietf.org/rfc/rfc4005.txt>
- [RFC4006] “Diameter Credit-Control Application”, H. Hakala, L. Mattila, J-P. Koskinen, M. Stura, J. Loughney. August 2005, URL: <http://www.ietf.org/rfc/rfc4006.txt>
- [TS32.299] “Telecommunication management; Charging management; Diameter Charging Applications”, 3GPP TS32.299, URL: <http://www.3gpp.org>

2.2 Informative References

- [OMA-DICT] “Dictionary for OMA Specifications”, Open Mobile Alliance™, OMA-Dictionary, URL: <http://www.openmobilealliance.org/>

3. Terminology and Conventions

3.1 Conventions

The key words “MUST”, “MUST NOT”, “REQUIRED”, “SHALL”, “SHALL NOT”, “SHOULD”, “SHOULD NOT”, “RECOMMENDED”, “MAY”, and “OPTIONAL” in this document are to be interpreted as described in [RFC2119].

All sections and appendixes, except “Scope” and “Introduction”, are normative, unless they are explicitly indicated to be informative.

3.2 Definitions

For the purposes of this document, the definitions given in [OMA-DICT] apply if they are not stated below.

Authorization	The act of determining whether something or someone will be granted access to a resource.
CH-1	Offline Charging Interface
CH-2	Online Charging Interface
Charging Correlation	See [OMA-DICT]
Charging Data Element	See [OMA-DICT]
Charging Enabler	A set of functions that enable other OMA enablers, applications, or other resources to charge service users.
Charging Enabler User	A Charging Enabler User invokes and interacts with the Charging Enabler
Charging Event	See [OMA-DICT]
Charging Record	The charging information carried from the Charging Enabler User to the Charging Enabler in one interaction, typically mapped on to a protocol message or a part of it.
Correlation	See Charging Correlation.
Resource	Any component, enabler, function or application that can send, receive and process requests.

3.3 Abbreviations

3GPP	3 rd Generation Partnership Project
3GPP/2	3GPP and 3GPP2
3GPP2	3 rd Generation Partnership Project 2
ACA	Accounting Answer
ACR	Accounting Request
AVP	Attribute Value Pair
OMA	Open Mobile Alliance
RFC	Request for Comments
TS	Technical Specification

4. Introduction

Offline charging is a process where charging information for resource usage is generated concurrently with usage of that resource. The charging information generated for offline charging does not have a real time effect on the service rendered.

The charging information is passed through a combination of logical charging functions that comprise the OMA Charging Enabler.

As a result of this process, charging information MAY be generated and transferred to a billing service provider e.g. for the purpose of subscriber billing, statistics etc and/or inter-operator settlement. A billing domain typically comprises post-processing systems such as the operator's billing system or billing mediation device.

The combination of the logical charging functions can be implemented by one or more physical entities.

5. Messages in CH-1

The offline charging interface supports two charging models, an event triggered charging model and a session based charging model. In the event triggered model, the Charging Enabler User reports each service usage to the Charging Enabler with a single Charging Record. In the session based charging model, the Charging Enabler User sends several Charging Records related to the same service usage to the Charging Enabler.

The messages in the offline charging interface are either requests or responses. Depending on the charging model, a request message reports either a one-time event (event-triggered model), or a step in a series of events that correspond to a session (session based model). This results in four different types of request messages: EventRecord for the event triggered model, and StartRecord, InterimRecord, and StopRecord for the session based model (figure 1). The type of the offline charging request is indicated by the value in OMA Charging Data Element “Record Type”.

Each request message is followed by a response message, in which the value for the OMA Charging Data Element “Record Type” is the same as in the corresponding request message. The outcome of the request is indicated with a result code included in the corresponding response. The resulting hierarchy of messages in the CH-1 interface is illustrated in Figure 1 below.

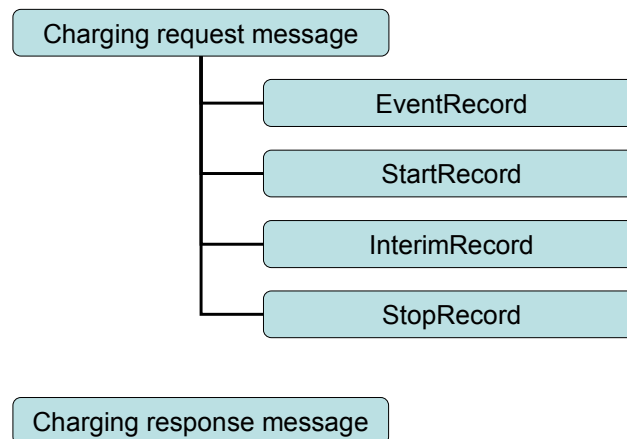


Figure 1: Messages

The request and response messages and their respective data elements are further described in chapter 6.

The two offline charging models are described in more detail in chapter 7. One set of flows describes the event triggered charging model, and the other set describes the session based charging model.

6. Message Descriptions

6.1 Charging Request Message

The following table describes the data elements for the charging request message. Different request messages may carry different specific values in certain data elements. These specific values are described for each request type in clauses 6.1.x.

The “Category” column indicates whether the element is mandatory or optional.

The “level” column allows the reader to clearly identify the hierarchy in between data elements. Let’s take the example of a data element “A” (level n) followed by data elements “B” and “C” (both being level n+1). This means that element A is composed of element B and element C.

Level	OMA Charging Data Element	Category	Description
1	Session Id	Mandatory	This data element is used to identify a specific session. All messages pertaining to a specific session MUST use the same value.
1	Origin Host	Mandatory	This data element identifies the endpoint that originated the message.
1	Origin Realm	Mandatory	This data element contains the realm of the originator of any message.
1	Destination Realm	Mandatory	This data element contains the realm the message is to be routed to.
1	Request Type	Mandatory	This data element indicates the type of the Charging Request message.
1	Request Number	Mandatory	This data element identifies this request within one session.
1	Request Interim Interval	Optional	This data element indicates the time interval for which interim records are requested for the session.
1	Origin State Id	Optional	This data element contains a monotonically increasing value that is advanced whenever an entity restarts with loss of previous state.
1	Event Timestamp	Optional	This data element records the time at which the reported event occurred.
1	Service Context Id	Mandatory	This data element contains a value to identify the service/enabler specification in the context of which the charging events must be interpreted. Data elements such as Service Identifier, Service Specific Units, contain service specific values that are defined within a particular service context identified in this data element.
1	Service information	Optional	This data element contains all the Charging Enabler User specific information.
2	Subscription Id	Optional	This data element identifies the end user’s subscription
3	Subscription Id Type	Mandatory	This data element identifies which type of identifier is carried by the subscription-Id e.g.: email, MSISDN, IMSI, SIP URI...
3	Subscription Id Data	Mandatory	This data element identifies the end user.
2	Service Generic Information	Optional	This data element contains information related to service usage that is common to different services/enablers.

Level	OMA Charging Data Element	Category	Description
3	Correlation Id	Optional	This data element contains information to correlate offline charging requests generated by different service components of the application.
3	Time	Optional	This data element indicates the length of the used time in seconds.
3	Money	Optional	This data element specifies the monetary amount in the given currency. The Currency Code data element should be included when this data element is included.
4	Unit Value	Mandatory	This data element describes a value for instance a monetary value. It consists of Value Digits and Exponent.
5	Value Digits	Mandatory	This data element contains the significant digits of a Unit Value without any decimal point.
5	Exponent	Optional	This data element contains the 10-x exponent that should be applied to the Value Digits.
4	Currency Code	Optional	This data element specifies which currency is used in a monetary value described by the Money data element.
3	Input Octets	Optional	This data element contains the number of used octets that can be/have been received from the end user.
3	Output Octets	Optional	This data element contains the number of used octets that can be/have been sent to the end user.
3	Service Specific Units	Optional	This data element specifies the number of service-specific units (e.g., number of events, points) in a selected service. The service specific units always refer to the service identified in the Service Identifier data element
3	Service Identifier	Optional	This data element contains the identifier of a specific service within the given service context, e.g, operation type.
3	Service Key	Optional	This data element can be used to identify the particular service item delivered.
3	User Equipment Info	Optional	This data element indicates the identity and capability of the terminal the end-user is using.
4	User Equipment Info Type	Mandatory	User Equipment Info Type defines the type of user equipment information contained in User Equipment Info Value, e.g. IMEI or MAC.
4	User Equipment Info Value	Mandatory	This data element contains the identity of the user equipment.

Table 1: Charging Request message

6.1.1 Event, and Session

As implied earlier in section 5, in the event triggered charging model, an EventRecord is generated for a one-time event, i.e. it is not a step in a series of events that correspond to a session. Thus, the Charging Enabler User utilizes EventRecord to report each service usage to the Charging Enabler with a single charging record, independent from any other charging record (see the flow in section 7.1.1).

In contrast, in the session based charging model, a session consists of several events that are related with each other: StartRecord, InterimRecord and StopRecord are used when the Charging Enabler User is aware that the interaction with the Charging Enabler spans over a period of time, or consists of a predictable series of events. In the session based charging model a charging request always consists of one StartRecord, one StopRecord, and zero or more InterimRecords in-between.

6.1.2 EventRecord

The EventRecord is used in the event triggered charging model to describe a single, distinct event.

The message structure for the EventRecord is inherited from the Charging Request message description. For data elements, where specific values exist, these are listed in Table 2 below.

OMA Charging Data Element	Values
Request Type	EVENT_RECORD
Request Number	0

Table 2: EventRecord

6.1.3 StartRecord

The StartRecord message is used in the session based charging model to record an event that indicates the start of a charging session. The StartRecord is the first message in a charging session.

The message structure for the StartRecord is inherited from the Charging Request message description. For data elements, where specific values exist, these are listed in Table 3 below.

OMA Charging Data Element	Values
Request Type	START_RECORD
Request Number	0

Table 3: StartRecord

6.1.4 InterimRecord

The InterimRecord is used in the session based charging model to record an event that is not the first or last event in a charging session. It may be sent on regular intervals or based on other triggers defined for the service. There may be multiple interim records for the same ongoing session.

The message structure for the InterimRecord is inherited from the Charging Request message description. For data elements, where specific values exist, these are listed in Table 4 below.

OMA Charging Data Element	Values
Request Type	INTERIM_RECORD
Request Number	n>0

Table 4: InterimRecord

6.1.5 StopRecord

The StopRecord is used in the session based charging model to record an event that indicates the end of an ongoing charging session, i.e. an event that indicates that it is the last event in that charging session.

The message structure for the StopRecord is inherited from the Charging Request message description. For data elements, where specific values exist, these are listed in Table 5 below.

OMA Charging Data Element	Values
Request Type	STOP_RECORD
Request Number	n+1 (n = last Interim)

Table 5: StopRecord

6.2 Charging Response Message

The charging response message is the response message to one of the Charging Request messages described above. The type of the corresponding charging request message is indicated by the value of the OMA Charging Data Element “Request Type”.

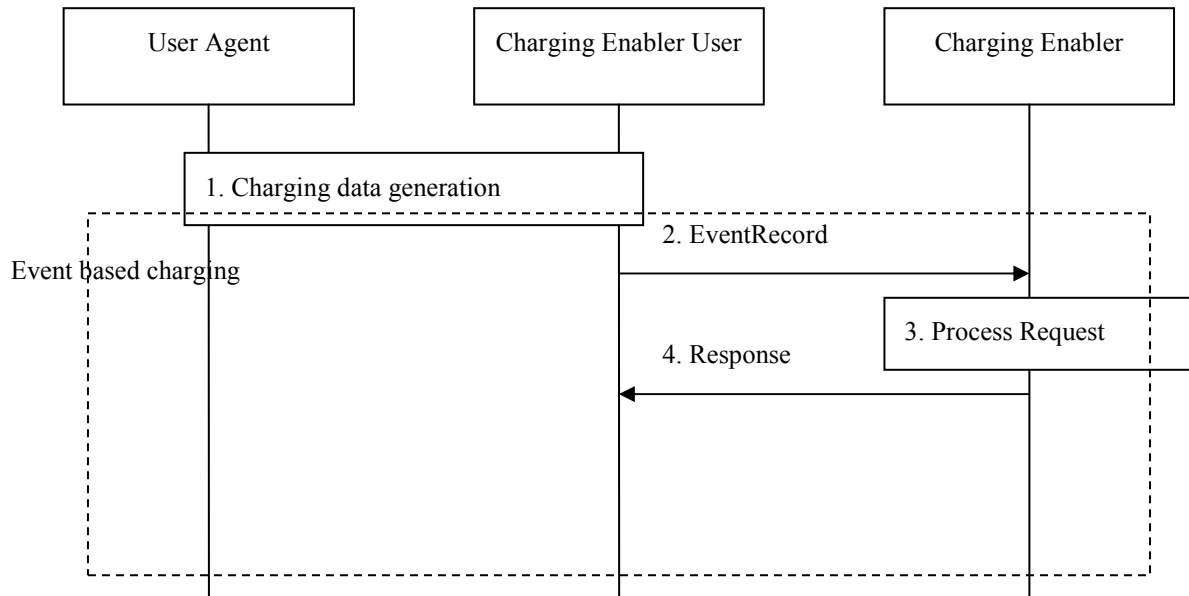
The following table defines the data elements for a Charging response message.

OMA Charging Data Element	Category	Description
Session Id	Mandatory	This data element is used to identify a specific session. All messages pertaining to a specific session must the same value.
Result Code	Mandatory	This data element indicates the result of a particular request.
Origin Host	Mandatory	This data element identifies the endpoint that originated the message.
Origin Realm	Mandatory	This data element identifies the realm of the originator of any message.
Request Type	Mandatory	This data element indicates the type of the corresponding Charging request message.
Request Number	Mandatory	This data element identifies this request within one session.
Request Interim Interval	Optional	This data element indicates the time interval for which interim records are requested for the session.
Origin State Id	Optional	This data element contains a monotonically increasing value that is advanced whenever an entity restarts with loss of previous state.
Event Timestamp	Optional	This data element records the time at which the reported event occurred.

Table 6: Charging Response message

7. Flows

7.1 Event Triggered Charging Model

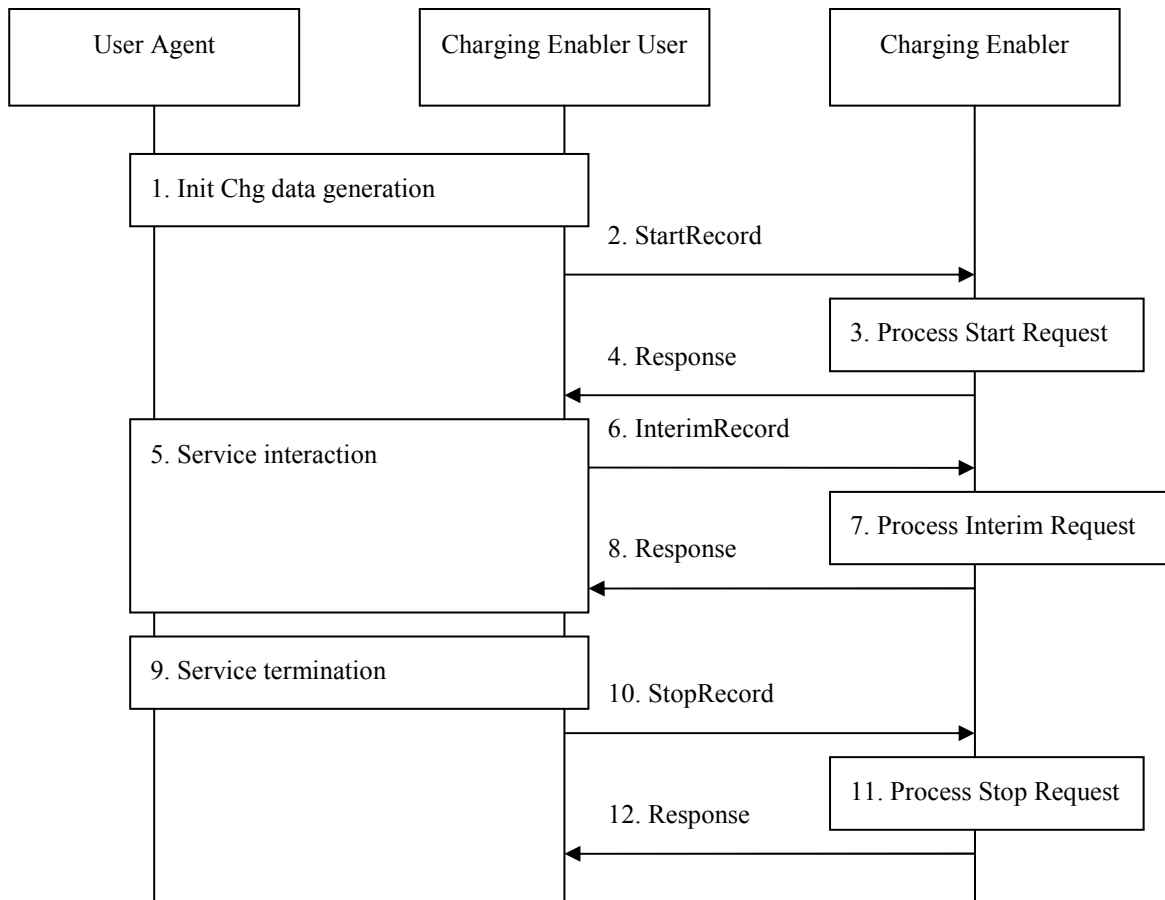


Flow 1: Offline charging request event-record generation

The above flow depicts the event triggered charging model and the generation of the EventRecord message and a response to it. Here, each message sent by the Charging Enabler User towards the Charging Enabler is self contained, meaning that it contains enough information for the Charging Enabler to record a charge.

1. **“Charging Data generation”**: The user invokes a service that is supported by the Charging Enabler User, and charging data is generated.
2. **“EventRecord”**: As a result of the service usage, the Charging Enabler User invokes the CH-1 interface and calls the Charging Enabler.
3. **“Process request”**: The Charging Enabler processes, and records the event
4. **“Response”**: The Charging Enabler answers the Charging Enabler User with a generated offline charging response.

7.2 Session Based Charging Model



Flow 2: Offline charging session based charging

This is a possible flow for offline, session based charging. In addition to the offline event based charging in section (7.1.1), in this flow the Charging Enabler User may send a sequence of partial information which is then aggregated by the Charging Enabler into a final charge.

1. “**Init Chg data generation**”: the user invokes a service that is supported by the Charging Enabler User.
2. “**StartRecord**”: The Charging Enabler User invokes CH-1, and sends in the initial StartRecord a request indicating to start a logical session that is associated with the service interaction. The StartRecord charging request message may also convey information describing the service and identifying the subscriber.
3. “**Process Start request**”: The Charging Enabler starts the charging session, and records the event.
4. “**Response**”: The Charging Enabler responds with “received and recorded” or with information about failure.
5. “**Service Interaction**”: The subscriber is using the service.
6. “**InterimRecord**”: As the service usage proceeds, the Charging Enabler User sends the charging information it has collected so far using the CH-1 interface due to either intermediate timer expiry or charging condition changes recognized at the Charging Enabler User. The periodicity may be conveyed in a data element (Request Interim Interval) coming from the Charging Enabler. This message may occur zero or more times.

7. **“Process Interim request”**: The Charging Enabler processes and records the event,.
8. **“Response”**: The Charging Enabler responds with “received and recorded” or with information about failure.
9. **“Service Termination”**: The subscriber decides to terminate the service.
10. **“StopRecord”**: The Charging Enabler User sends final charging information to the Charging Enabler. This message implies that the session opened by the initial StartRecord SHALL be closed.
11. **“Process Stop request”**: The Charging Enabler records the event and closes the session.
12. **“Response”**: The Charging Enabler responds with “received and recorded” or with information about failure.

8. Bindings of OMA CH-1 Interface to Protocols

This section aims to describe the mapping between the general (protocol independent) messages and OMA Charging Data Elements described in section 6 with the actual protocol(s) utilized on the CH-1 charging interface.

8.1 Binding to Diameter

8.1.1 Basic Principles

The CH-1 interface is based on the re-use of the basic functionality of Diameter Accounting, as defined by the Diameter Base Protocol in IETF [RFC3588]. Any mandatory element of the RFC SHALL be supported.

With regard to the Diameter protocol the Charging Enabler User acts as the Diameter Client in the sense that it is the entity generating charging data and sending the charging records to the Diameter Server. The client implements the account state machine described in [RFC3588]. The Charging Enabler acts as the Diameter Server in the sense that it is the entity storing the charging records. The server implements the accounting state machine "SERVER, STATELESS ACCOUNTING" as specified in [RFC3588], i.e. there is no order in which the server expects to receive the accounting information.

In the definition of the Diameter Commands, the AVPs that are specified in the referenced specifications but not used by the OMA Charging Enabler are marked with strikethrough, e.g. [~~Acct-Multi-Session-Id~~]. If such parameters are present, they will not constitute an error. The bracket conventions and the asterisk (*) below are used as in [RFC3588].

8.1.2 Diameter Commands used on CH-1

On the CH-1 interface requests are sent from the Charging Enabler User to the Charging Enabler and responses are sent from the Charging Enabler to the Charging Enabler User. The Accounting Request (ACR) commands are used to communicate Event and Session based requests. The Accounting Answer (ACA) commands are used to communicate Event and Session based responses.

The following additional Diameter Base messages as specified in [RFC3588] SHALL also be supported by the Charging Enabler and Charging Enabler User:

- Re-Auth-Request (RAR) and Re-Auth-Answer (RAA);
- Capability-Exchange-Request (CER) and Capability-Exchange-Answer (CEA);
- Device-Watchdog-Request (DWR) and Device-Watchdog-Answer (DWA);
- Abort-Session-Request (ASR) and Abort-Session-Answer (ASA);
- Disconnect-Peer-Request (DPR) and Disconnect-Peer-Answer (DPA).

8.1.2.1 Accounting Request Command

The ACR command is sent from the Charging Enabler User to the Charging Enabler in order to send charging information for the requested resource usage. This command is used for both Event Based and Session Based requests. The distinction is made accordingly to the value carried in the Accounting-Record-Type AVP: EVENT_RECORD (value 1) for an Event Based request, START_RECORD (value 2), INTERIM_RECORD (value 3) and STOP_RECORD (value 4) for a Session Based request.

The message format is the following:

```
<ACR> ::= < Diameter Header: 271, REQ, PXY >

    < Session-Id >
    { Origin-Host }
    { Origin-Realm }
    { Destination-Realm }
```

```

{ Accounting-Record-Type }
{ Accounting-Record-Number }
[ Acct-Application-Id ]
[ Vendor-Specific-Application-Id ]
[ User-Name ]
[ Accounting-Sub-Session-Id ]
[ Acct-Session-Id ]
[ Acct-Multi-Session-Id ]
[ Acct-Interim-Interval ]
[ Accounting-Realtime-Required ]
[ Origin-State-Id ]
[ Event-Timestamp ]
* [ Proxy-Info ]
* [ Route-Record ]
[ Service-Context-Id ]
[ Service-Information ]
* [ AVP ]
    
```

8.1.2.2 Accounting Answer Command

The ACA command is sent from the Charging Enabler to the Charging Enabler User in response to an ACR command and is used in order to acknowledge the reception of the charging data. This command is used for both Event Based and Session Based responses. The distinction is made accordingly to the value carried in the Accounting-Record-Type AVP. The value of this AVP will be the same one contained in the same AVP of the corresponding request.

The message format is the following:

```

<ACA> ::= < Diameter Header: 271, PXY >

< Session-Id >
{ Result-Code }
{ Origin-Host }
{ Origin-Realm }
{ Accounting-Record-Type }
{ Accounting-Record-Number }
[ Acct-Application-Id ]
[ Vendor-Specific-Application-Id ]
[ User-Name ]
[ Accounting-Sub-Session-Id ]
[ Acct-Session-Id ]
[ Acct-Multi-Session-Id ]
[ Error-Reporting-Host ]
[ Acct-Interim-Interval ]
[ Accounting-Realtime-Required ]
[ Origin-State-Id ]
[ Event-Timestamp ]
* [ Proxy-Info ]
* [ AVP ]
    
```

8.1.3 Mapping of OMA Data Elements to AVPs

The following table describes the mapping of the OMA Charging Data Elements to the Diameter AVPs, which are re-used from [RFC3588], [RFC4005], [RFC4006] or [TS32.299]. Mapping of OMA Charging Data Elements to AVPs defined by OMA can be found from [OMNA].

OMA Charging Data Element	Diameter AVP
Request Number	Accounting-Record-Number
Request Type	Accounting-Record-Type
Request Interim Interval	Acct-Interim-Interval
Input Octets	Accounting-Input-Octets

OMA Charging Data Element	Diameter AVP
Money	CC-Money
Output Octets	Accounting-Output-Octets
Service Specific Units	CC-Service-Specific-Units
Time	Acct-Session-Time
Correlation Id	[OMNA]
Currency Code	Currency-Code
Destination Realm	Destination-Realm
Event Timestamp	Event-Timestamp
Exponent	Exponent
Origin Host	Origin-Host
Origin Realm	Origin-Realm
Origin State Id	Origin-State-Id
Result code	Result-Code
Service Context Id	Service-Context-Id
Service Identifier	Service-Identifier
Service Information	Service-Information
Session Id	Session-Id
Subscription Id	Subscription-Id
Subscription Id Data	Subscription-Id-Data
Subscription Id Type	Subscription-Id-Type
Unit Value	Unit-Value
User Equipment Info	User-Equipment-Info
User Equipment Info Type	User-Equipment-Info-Type
User Equipment Info Value	User-Equipment-Info-Value
Value Digits	Value-Digits
Service Key	[OMNA]
Service Generic Information	[OMNA]

Table 7: Bindings for Accounting

8.1.4 Summary of AVPs used on CH-1

The following table lists the Diameter AVPs specifically re-used by OMA for the Offline Charging interface (CH-1).

The table contains the following information:

- AVP Name: The name used in Diameter.
- AVP Code: The AVP Code used in the Diameter AVP Header.
- Used in ACR: Indicates if it is mandatory, optional or not used in the ACR command.
- Used in ACA: Indicates if it is mandatory, optional or not used in the ACA command.
- Used in SGI: Indicates if it is mandatory, optional or not used in the Service Generic Information parameter.
- AVP Defined: A reference to where this AVP is defined.
- Value Type: The Diameter format of the AVP data as defined in Basic or Derived AVP Data Format.
- AVP Flag Rules: The rules for how the AVP Flags in the AVP Header may be set.
- May Encr.: Indicates if the AVP may be encrypted or not.

AVP Name	AVP Code	Used in			AVP Defined	Value Type	AVP Flag Rules				May Encr.
		ACR	ACA	SI			Must	May	Should Not	Must Not	
Accounting-Input-Octets	363	-	-	O	[RFC4005]	Unsigned64	M	P	-	V	Y
Accounting-Output-Octets	364	-	-	O	[RFC4005]	Unsigned64	M	P	-	V	Y
Accounting-Record-Number	485	M	M	-	[RFC3588]	Unsigned32	M	P	-	V	Y
Accounting-Record-Type	480	M	M	-	[RFC3588]	Enumerated	M	P	-	V	Y
Acct-Application-Id	259	O	O	-	[RFC3588]	Unsigned32	M	P	-	V	N
Acct-Interim-Interval	85	O	O	-	[RFC3588]	Unsigned32	M	P	-	V	Y
Acct-Session-Time	46	-	-	O	[RFC4005]	Unsigned32	M	P	-	V	Y
CC-Money	413	-	-	O	[RFC4006]	Grouped	M	P	-	V	Y
CC-Service-Specific-Units	417	-	-	O	[RFC4006]	Unsigned64	M	P	-	V	Y
Currency-Code	425	-	-	O	[RFC4006]	Unsigned32	M	P	-	V	Y
Destination-Realm	283	M	-	-	[RFC3588]	DiamIdent	M	P	-	V	N
Event-Timestamp	55	O	O	-	[RFC3588]	Time	M	P	-	V	N
Exponent	429	-	-	O	[RFC4006]	Integer32	M	P	-	V	Y
Origin-Host	264	M	M	-	[RFC3588]	DiamIdent	M	P	-	V	N
Origin-Realm	296	M	M	-	[RFC3588]	DiamIdent	M	P	-	V	N
Origin-State-Id	278	O	O	-	[RFC3588]	Unsigned32	M	P	-	V	N
Proxy-Info	284	O	O	-	[RFC3588]	Grouped	M	-	-	P,V	N
Proxy-Host	280	M	M	-	[RFC3588]	DiamIdent	M	-	-	P,V	N
Proxy-State	33	M	M	-	[RFC3588]	OctetString	M	-	-	P,V	N
Result-Code	268	-	M	-	[RFC3588]	Unsigned32	M	P	-	V	N
Route-Record	282	O	-	-	[RFC3588]	DiamIdent	M	-	-	P,V	N
Session-Id	263	M	M	-	[RFC3588]	UTF8String	M	P	-	V	Y
Service-Context-Id	461	O	-	-	[RFC4006]	UTF8String	M	P	-	V	Y
Service-Identifier	439	-	-	O	[RFC4006]	UTF8String	M	P	-	V	Y
Service-Information	873	O	-	-	[TS32.299]	Grouped	V,M	P	-	-	N
Subscription-Id	443	-	-	O	[RFC4006]	Grouped	M	P	-	V	Y
Subscription-Id-Data	444	-	-	M	[RFC4006]	UTF8String	M	P	-	V	Y
Subscription-Id-Type	450	-	-	M	[RFC4006]	Enumerated	M	P	-	V	Y
Unit-Value	445	-	-	M	[RFC4006]	Grouped	M	P	-	V	Y
User-Equipment-Info	458	-	-	O	[RFC4006]	Grouped	-	P,M	-	V	Y
User-Equipment-Info-Type	459	-	-	M	[RFC4006]	Enumerated	-	P,M	-	V	Y
User-Equipment-Info-Value	460	-	-	M	[RFC4006]	OctetString	-	P,M	-	V	Y
User-Name	1	O	O	-	[RFC3588]	UTF8String	M	P	-	V	Y
Value-Digits	447	-	-	M	[RFC4006]	Integer64	M	P	-	V	Y

Table 8: Summary of AVPs used on CH-1

For the usage of Service-Context-ID AVP and Service-Information AVP please refer to the [CHRG_ONLINE]. Since the application uses Acct-Application-ID, the AVP shall contain the value of 3 as defined in [RFC3588].

Appendix A. Change History

A.1 Approved Version History

Reference	Date	Description
OMA-TS-Charging_Offline-V1_0-20070904-A	04 Sep 2007	Status changed to Approved by TP Ref #: OMA-TP-2007-0303-INP_Charging_V1_0_ERP_for_final_approval

Appendix B. Static Conformance Requirements (Normative)

The notation used in this appendix is specified in [IOPPROC].

B.1 SCR for the Charging Enabler User

B.1.1 Generic SCR

Item	Function	Reference	Status	Requirement
Offline-C-001	Implement the account state machine.	RFC 3588	M	
Offline-C-002	Support of Event Charging	Section 6.1.1	M	
Offline-C-003	Support of Session Charging	Section 6.1.1	M	
Offline-C-004	Error handling is dealt with as specified in the Diameter Base Protocol	RFC 3588 (sect.7)	M	

B.1.2 SCR for Event Charging

Item	Function	Reference	Status	Requirement
Offline-Event-C-001	Support an Event Request.	Section 6.1.2	M	

B.1.3 SCR for Session Charging

Item	Function	Reference	Status	Requirement
Offline-Session-C-001	Support a Start Request	Section 6.1.3	M	
Offline-Session-C-002	Support an Interim Request	Section 6.1.4	O	
Offline-Session-C-003	Support a Stop Request	Section 6.1.5	M	

B.2 SCR for the Charging Enabler

B.2.1 Generic SCR

Item	Function	Reference	Status	Requirement
Offline-S-001	Implement the accounting state machine "SERVER, STATELESS ACCOUNTING"	RFC 3588	M	
Offline-S-002	Support of Event Charging	Section 6.2	M	
Offline-S-003	Support of Session Charging	Section 6.2	M	
Offline-S-004	Error handling is dealt with as specified in the Diameter Base Protocol	RFC 3588 (sect.7)	M	

B.2.2 SCR for Event Charging

Item	Function	Reference	Status	Requirement
Offline-Event-S-001	Support a response to an Event Request	Section 6.2	M	

B.2.3 SCR for Session Charging

Item	Function	Reference	Status	Requirement
Offline-Session-S-001	Support a response to a Start Request	Section 6.2	M	
Offline-Session-S-002	Support a response to an Interim Request	Section 6.2	M	
Offline-Session-S-003	Support a response to a Stop Request	Section 6.2	M	