



OMA Device Management Tree and Description

Candidate Version 1.2 – 07 Jun 2005

Open Mobile Alliance
OMA-TS-DM-TND-V1_2-20050607-C

Use of this document is subject to all of the terms and conditions of the Use Agreement located at <http://www.openmobilealliance.org/UseAgreement.html>.

Unless this document is clearly designated as an approved specification, this document is a work in process, is not an approved Open Mobile Alliance™ specification, and is subject to revision or removal without notice.

You may use this document or any part of the document for internal or educational purposes only, provided you do not modify, edit or take out of context the information in this document in any manner. Information contained in this document may be used, at your sole risk, for any purposes. You may not use this document in any other manner without the prior written permission of the Open Mobile Alliance. The Open Mobile Alliance authorizes you to copy this document, provided that you retain all copyright and other proprietary notices contained in the original materials on any copies of the materials and that you comply strictly with these terms. This copyright permission does not constitute an endorsement of the products or services. The Open Mobile Alliance assumes no responsibility for errors or omissions in this document.

Each Open Mobile Alliance member has agreed to use reasonable endeavors to inform the Open Mobile Alliance in a timely manner of Essential IPR as it becomes aware that the Essential IPR is related to the prepared or published specification. However, the members do not have an obligation to conduct IPR searches. The declared Essential IPR is publicly available to members and non-members of the Open Mobile Alliance and may be found on the “OMA IPR Declarations” list at <http://www.openmobilealliance.org/ipr.html>. The Open Mobile Alliance has not conducted an independent IPR review of this document and the information contained herein, and makes no representations or warranties regarding third party IPR, including without limitation patents, copyrights or trade secret rights. This document may contain inventions for which you must obtain licenses from third parties before making, using or selling the inventions. Defined terms above are set forth in the schedule to the Open Mobile Alliance Application Form.

NO REPRESENTATIONS OR WARRANTIES (WHETHER EXPRESS OR IMPLIED) ARE MADE BY THE OPEN MOBILE ALLIANCE OR ANY OPEN MOBILE ALLIANCE MEMBER OR ITS AFFILIATES REGARDING ANY OF THE IPR'S REPRESENTED ON THE “OMA IPR DECLARATIONS” LIST, INCLUDING, BUT NOT LIMITED TO THE ACCURACY, COMPLETENESS, VALIDITY OR RELEVANCE OF THE INFORMATION OR WHETHER OR NOT SUCH RIGHTS ARE ESSENTIAL OR NON-ESSENTIAL.

THE OPEN MOBILE ALLIANCE IS NOT LIABLE FOR AND HEREBY DISCLAIMS ANY DIRECT, INDIRECT, PUNITIVE, SPECIAL, INCIDENTAL, CONSEQUENTIAL, OR EXEMPLARY DAMAGES ARISING OUT OF OR IN CONNECTION WITH THE USE OF DOCUMENTS AND THE INFORMATION CONTAINED IN THE DOCUMENTS.

© 2005 Open Mobile Alliance Ltd. All Rights Reserved.

Used with the permission of the Open Mobile Alliance Ltd. under the terms set forth above.

Contents

1.	SCOPE	5
2.	REFERENCES	6
2.1	NORMATIVE REFERENCES.....	6
2.2	INFORMATIVE REFERENCES.....	6
3.	TERMINOLOGY AND CONVENTIONS.....	7
3.1	CONVENTIONS.....	7
3.2	DEFINITIONS.....	7
3.3	ABBREVIATIONS.....	7
4.	INTRODUCTION	8
5.	THE MANAGEMENT TREE.....	9
6.	NODES	10
6.1	COMMON CHARACTERISTICS OF NODES.....	10
6.2	DETAILS OF THE MANAGEMENT TREE.....	10
6.2.1	Addressing object values	10
6.2.2	Addressing interior node child lists.....	11
6.2.3	Permanent and dynamic nodes.....	11
6.2.4	Adding dynamic nodes	11
6.2.5	Protecting dynamic nodes.....	12
7.	PROPERTIES OF NODES.....	14
7.1	DEFINITION	14
7.2	SUPPORTED PROPERTIES	14
7.3	PROPERTY ADDRESSING.....	15
7.4	PROPERTY VALUES.....	15
7.5	OPERATIONS ON PROPERTIES.....	15
7.5.1	Properties of permanent nodes	16
7.6	SCOPE OF PROPERTIES.....	16
7.7	DETAILED DESCRIPTION OF PROPERTIES.....	16
7.7.1	ACL	16
7.7.2	Format.....	19
7.7.3	Name.....	20
7.7.4	Size	20
7.7.5	Title.....	20
7.7.6	TStamp.....	20
7.7.7	Type.....	20
7.7.8	VerNo	22
8.	DEVICE MANAGEMENT TREE EXCHANGE.....	23
8.1	REQUESTING A PART OF A MANAGEMENT TREE.....	23
8.2	REPRESENTATION RESPONSE OF THE MANAGEMENT TREE.....	23
9.	DEVICE DESCRIPTION FRAMEWORK.....	25
9.1	RATIONALE FOR A DEVICE DESCRIPTION FRAMEWORK	25
9.2	THE OMA DM DEVICE DESCRIPTION FRAMEWORK.....	26
9.3	XML USAGE	26
9.4	FRAMEWORK ELEMENTS.....	26
9.4.1	Structural elements.....	26
9.4.2	Run-time property elements.....	29
9.4.3	Framework property elements	33
9.5	SHORTCOMINGS OF THE OMA DM DESCRIPTION FRAMEWORK.....	38
10.	WBXML DEFINITION	39
10.1	CODE PAGE DEFINITIONS.....	39
10.2	TOKEN DEFINITIONS.....	39

APPENDIX A. CHANGE HISTORY (INFORMATIVE).....42
A.1 APPROVED VERSION HISTORY42
A.2 DRAFT/CANDIDATE VERSION 1.2 HISTORY42
APPENDIX B. STATIC CONFORMANCE REQUIREMENTS (NORMATIVE).....44
B.1 SCR FOR DM CLIENT.....44
B.2 SCR FOR DM SERVER44
APPENDIX C. TREE EXCHANGE EXAMPLES (INFORMATIVE).....45
C.1 EXAMPLE OF A GET WITH ATTRIBUTE STRUCT45
C.2 EXAMPLE OF A GET WITH ATTRIBUTE STRUCTDATA.....46
APPENDIX D. TYPE DEFINITIONS (NORMATIVE).....48
D.1 MIME MEDIA TYPE DEFINITION.....48

Figures

Figure 1: Example management tree9
Figure 2: Example management tree with ACLs.....19
Figure 3: Conceptual view of how a description framework is used25

Tables

Table 1: Protection mechanisms for dynamic nodes13
Table 2: Run-time properties.....14
Table 3: Property support for devices.....14
Table 4: Allowed operations on properties.....15
Table 5: Possible attributes for management tree information retrieval.....23
Table 6: Framework property elements33
Table 7: Code page tokens39
Table 8: Token definitions41

1. Scope

This document defines the management tree and the nodes on which the OMA DM protocol acts. A standardized way to describe these nodes is also specified.

2. References

2.1 Normative References

- [AMT] Assigned media types. Internet Assigned Numbers Authority.
URL:[http:// www.iana.org](http://www.iana.org)
- [DMDDFDTD] “OMA DM Device Description Framework, Version 1.2”. Open Mobile Alliance™.
OMA-TS-DM-DDF-V1_2. URL:<http://www.openmobilealliance.org>
- [DMPRO] “OMA Device Management Protocol, Version 1.2”. Open Mobile Alliance™.
OMA-TS-DM-Protocol-V1_2. URL:<http://www.openmobilealliance.org>
- [DMSEC] “OMA Device Management Security, Version 1.2”. Open Mobile Alliance™.
OMA-TS-DM-Security-V1_2. URL:<http://www.openmobilealliance.org>
- [DMSTDOBJ] “OMA Device Management Standardized Objects, Version 1.2”. Open Mobile Alliance™.
OMA-TS-DM-StdObj-V1_2. URL:<http://www.openmobilealliance.org>
- [DMTND] “OMA Device Management Tree and Description Serialization Specification, Version 1.2”.
Open Mobile Alliance™. OMA-TS-DM-TNDS-V1_2.
URL:<http://www.openmobilealliance.org>
- [ISO8601] ISO 8601:2000, Data elements and interchange formats -- Information interchange --
Representation of dates and times. URL:<http://www.iso.ch/>
- [META] “SyncML Meta Information, version 1.2”. Open Mobile Alliance™.
OMA-SyncML-MetaInfo-V1_2. URL:<http://www.openmobilealliance.org>
- [RFC2119] “Key words for use in RFCs to Indicate Requirement Levels”. S. Bradner. March 1997.
URL:<http://www.ietf.org/rfc/rfc2119.txt>
- [RFC2396] “Uniform Resource Identifiers (URI): Generic Syntax”. T. Berners-Lee, et al. August 1998.
URL:<http://www.ietf.org/rfc/rfc2396.txt>
- [WBXML] “WAP Binary XML Content Format Specification”, WAP Forum™, WAP-240-WBXML,
URL:<http://www.openmobilealliance.org>
- [XMLSCHEMADT] “XML Schema Part 2: Datatypes”, W3C Recommendation 02 May 2001,
URL:<http://www.w3.org/XML/Schema/>

2.2 Informative References

None.

3. Terminology and Conventions

3.1 Conventions

The key words “MUST”, “MUST NOT”, “REQUIRED”, “SHALL”, “SHALL NOT”, “SHOULD”, “SHOULD NOT”, “RECOMMENDED”, “MAY”, and “OPTIONAL” in this document are to be interpreted as described in [RFC2119].

All sections and appendixes, except “Scope” and “Introduction”, are normative, unless they are explicitly indicated to be informative.

Any reference to components of the DTD's or XML snippets are specified in this `typeface`.

3.2 Definitions

Access Control List	A list of identifiers and access rights associated with each identifier.
Description Framework	A specification for how to describe the management syntax and semantics for a particular device type.
Dynamic node	A node is dynamic if the DDF property Scope is set to Dynamic, or if the Scope property is unspecified.
Interior node	A node that may have child nodes, but cannot store any value. The Format property of an interior node is <code>node</code> .
Leaf node	A node that can store a value, but cannot have child nodes. The Format property of a leaf node is not <code>node</code> .
Management client	A software component in a managed device that correctly interprets OMA DM commands, executes appropriate actions in the device and sends back relevant responses to the issuing management server.
Management object	A management object is a subtree of the management tree which is intended to be a (possibly singleton) collection of nodes which are related in some way. For example, the <code>./DevInfo</code> nodes form a management object. A simple management object may consist of one single node.
Management object identifier	The Type property describing the kind of data stored as the management object's value.
Management server	A network based entity that issues OMA DM commands to devices and correctly interprets responses sent from the devices.
Management tree	The mechanism by which the management client interacts with the device, e.g. by storing and retrieving values from it and by manipulating the properties of it, for example the access control lists.
Node	A node is a single element in a management tree. There can be two kinds of nodes in a management tree: interior nodes and leaf nodes. The Format property of a node provides information about whether a node is a leaf or an interior node.
Permanent node	A node is permanent if the DDF property Scope is set to Permanent. If a node is not permanent, it is dynamic. A permanent node can never be deleted.
Server identifier	The OMA DM internal name for a management server. A management server is associated with an existing server identifier in a device through OMA DM authentication

3.3 Abbreviations

OMA	Open Mobile Alliance
ACL	Access Control List
DDF	Device Description Framework

4. Introduction

Other OMA DM specifications define the syntax and semantics of the OMA DM protocol. However, the usefulness of such a protocol would be limited if the managed entities in devices required different data formats and displayed different behaviors. To avoid this situation this specification defines a number of mandatory management objects for various uses in devices. These objects are primarily associated with OMA DM and SyncML configuration.

Since device manufacturers will always develop new functions in their devices and since these functions often are proprietary, no standardized management objects exist for them. To make these functions manageable in the devices that have them, a device description framework is needed that can provide servers with the necessary information they must have in order to manage the new functions. The intention with this framework is that device manufacturers will publish descriptions of their devices as they enter the market. Organizations operating device management servers should then only have to feed the new description to their servers for them to automatically recognize and manage the new functions in the devices.

5. The Management Tree

Each device that supports OMA DM MUST contain a management tree. The management tree organizes all available management objects in the device as a hierarchical tree structure where all nodes can be uniquely addressed with a URI. The following figure shows an example management tree.

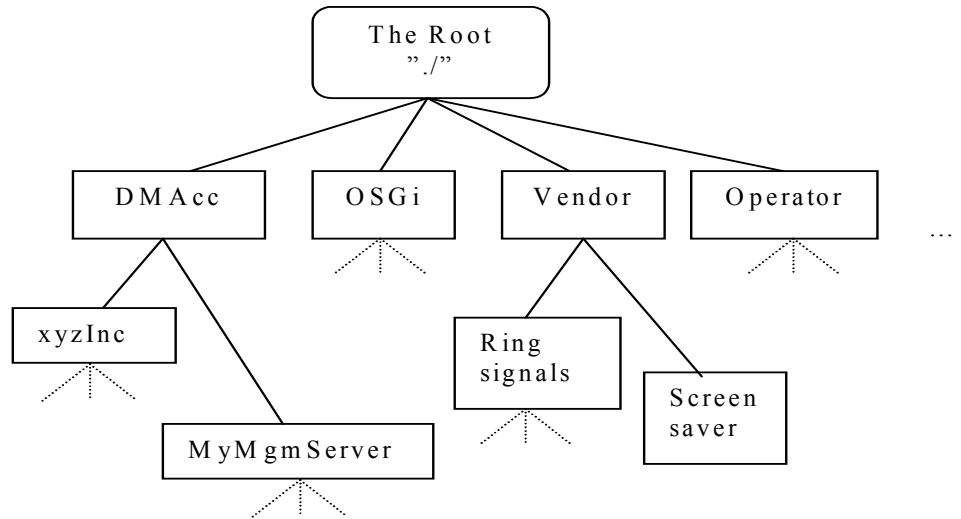


Figure 1: Example management tree

The URI for a node is constructed by starting at the device root and, as the tree is traversed down to the node in question, each node name is appended to the previous ones using “/” as the delimiting character. In the OMA DM protocol [DMPRO], the URI used to address nodes MUST be a relative URI.

To access the xyzInc node in the management tree above, a server would present the address: ./DMACC/xyzInc, or DMACC/xyzInc. Note that the URI MUST be given with the root of the management tree as the starting point.

URI used in OMA DM MAY be treated and interpreted as case sensitive. Node names SHOULD be chosen such that resulting URI strings differ in more than just the case of individual letters. Implementations, even if treating and interpreting URIs as case insensitive, SHALL preserve the case of symbols in the names of dynamically created nodes.

Client device SHOULD indicate the node name case sensitivity in the DDF using the CaseSense element as specified in Section 9.4.3.

URI used in OMA DM MUST use the UTF-8 character set.

The following restrictions on URI syntax are intended to simplify the parsing of URI's.

- A URI MUST NOT end with the delimiter “/”. Note that this implies that the root node MUST be denoted as “.” and not “./”.
- A URI MUST NOT be constructed using the character sequence “./”. The character sequence “./” MUST NOT be used anywhere else but in the beginning of a URI.

6. Nodes

6.1 Common characteristics of nodes

Nodes are the entities which can be manipulated by management actions carried over the OMA DM protocol. A node can be as small as an integer or a large and complex like a background picture or screen saver. The OMA DM protocol is agnostic about the contents, or values, of the nodes and treats the leaf node values as opaque data.

An interior node can have an unlimited number of child nodes linked to it in such a way that the complete collection of all nodes in a management database forms a tree structure. Each node in a tree **MUST** have a unique URI.

Each node has properties associated with it; these properties are defined in 6.1. All properties, except the ACL, are valid only for the node to which they are associated.

6.2 Details of the management tree

As mentioned before the complete structure of all nodes and the root (the device itself) forms a tree. Management servers can explore the structure of the tree by using the GET command. If the accessed node is an interior node, a list of all child node names is returned. If the interior node have no children an empty list of child node names is returned, e.g. <Data/>. If the node is a leaf node it **MUST** have a value, which could be null, and this value is returned. A management server **MAY** maintain information about its current position in the management tree.

Nodes with the Format property set to node are defined as interior nodes. Nodes that are not interior nodes are defined as leaf nodes. Interior nodes can have 0 or more children, leaf nodes cannot have children.

The management tree can be extended at run-time. This is done with the Add or Replace command and both new interior nodes and new leaf nodes can be created. The parent of any new node **MUST** be an interior node. The device itself can also extend the management tree. This could happen as a result of user input or by attaching the some kind of accessory to the device.

6.2.1 Addressing object values

Node values are addressed by presenting a relative URI for the requested node. The base URI [RFC2396] **MUST** be the root of the management tree in the device. If a valid URI is presented along with a command for which the current server identifier has sufficient access rights, the command **MUST** be executed. The client **MUST** respond with an appropriate status code. If the command results in a value that is to be sent back to the server, then this value **MUST** be part of the response. The type of the value is returned as part of the meta information as specified in [AMT].

Example:

The following Get command:

```
<Get>
  <CmdID>4</CmdID>
  <Item>
    <Target>
      <LocURI>Vendor/Ring_signals/Default_ring</LocURI>
    </Target>
  </Item>
</Get>
```

could receive a response like this:

```
<Results>
  <CmdRef>4</CmdRef>
  <CmdID>7</CmdID>
  <Item>
    <Data>MyOwnRing</Data>
```

```

</Item>
</Results>

```

6.2.2 Addressing interior node child lists

Interior node child lists are addressed in the same way as node values. The list of children is returned as an unordered list of names. The individual names in the list are separated by the character “/”. A returned child list has the format `node` in the meta information of the result. Note that the “/” character cannot be part of any node names according to [RFC2396].

Example:

The following Get command:

```

<Get>
  <CmdID>4</CmdID>
  <Item>
    <Target>
      <LocURI>Vendor/Ring_signals</LocURI>
    </Target>
  </Item>
</Get>

```

could receive a response like this:

```

<Results>
  <CmdRef>4</CmdRef>
  <CmdID>7</CmdID>
  <Item>
    <Meta>
      <Format xmlns='syncml:metinf'>node</Format>
      <Type xmlns='syncml:metinf'>text/plain</Type>
    </Meta>
    <Data>Default_ring/Ring1/Ring2/Ring3/Ring4</Data>
  </Item>
</Results>

```

If a Get command is issued on an interior node that does not have any children the client MUST return an empty child list, e.g. `<Data/>`, and the status code (200) OK.

6.2.3 Permanent and dynamic nodes

Nodes in the management tree can be either permanent or dynamic.

Permanent nodes are typically built in at device manufacture and cannot be deleted. Permanent nodes can also be temporarily added to a device by, for instance, connecting new accessory hardware. However, a management server cannot create or delete permanent nodes at runtime. An attempt by a management server to delete a permanent node will always return status (405) `Command not allowed`. The same status code will also be returned for all attempts to modify the Name property of a permanent node. Note that permanent nodes MUST NOT be children of dynamic nodes.

Dynamic nodes can be created and deleted at runtime by management servers. The Add command is used to create new nodes. The Delete command is used to delete dynamic nodes and all their properties. If a deleted node has children, i.e. is an interior node, the children are also deleted.

The complete layout of the permanent nodes in the management tree is reflected in the device description.

6.2.4 Adding dynamic nodes

As stated in the previous section the Add command is used to create new nodes. The definition of the Add command in [DMPRO] states that the node addressed MUST not exist in the tree. The name of the newly created node will be the last

segment of the URI presented in the Target element of the Add command. Note that devices might have various constraints as to the lengths of the URI used to address the management tree. These constraints MUST be recorded in the `./DevDetail` management object as specified in [DMSTDOBJ].

Example:

The following Add command:

```
<Add>
  <CmdID>5</CmdID>
  <Item>
    <Meta>
      <Format xmlns='syncml:metinf'>b64</Format>
      <Type xmlns='syncml:metinf'>audio/myMelodyType</Type>
    </Meta>
    <Target>
      <LocURI>Vendor/Ring_signals/My_beep</LocURI>
    </Target>
    <Data>jkhdsfKJhdsf89374h</Data>
  </Item>
</Add>
```

would create a previously non-existing node called `My_beep` as a child node to the interior node `Vendor/Ring_signals`.

When a node is created, all the properties that this node supports are automatically created by the client. Those property values that depend on information present in the Add or Replace command, e.g. Name, are assigned these values. Properties with a default value or a value that is automatically updated by the client are also assigned appropriate value at node creation. Other properties will have no value.

Interior nodes are created in the same way. The difference is that the server MUST explicitly say that the new node is an interior node by including a Meta element with a Format value of node.

Example:

```
<Add>
  <CmdID>5</CmdID>
  <Item>
    <Target>
      <LocURI>Vendor/Ring_signals/MyOwnSongs</LocURI>
    </Target>
    <Meta>
      <Format xmlns='syncml:metinf'>node</Format>
    </Meta>
  </Item>
</Add>
```

6.2.5 Protecting dynamic nodes

Some dynamic nodes may be part of a larger context, and only have meaning in this context. Alternatively, the context (a management object) might become useless if a detail is lost, e.g. by the deletion of a dynamic leaf node. This could for instance be the address of an SMTP server for an e-mail management object. To protect this kind of node from deletion and thus maintain the integrity of the context, the DDF property `AccessType` can be set so that the Delete command is excluded. This means that a Delete command will fail with status (405) `Command not allowed`.

Note that this is not the same thing as a permanent node. A node protected by the `AccessType` property can still be deleted if it is part of a sub-tree that is being deleted. The Delete command acts strictly on the node it is addressed at, and if that node is a dynamic interior node it will be deleted along with all its child nodes. If any of these child nodes have the `AccessType`

property set to exclude Delete they will be deleted anyway. The following table summarizes the protection mechanisms for dynamic nodes.

		How the node is addressed	
		Directly by URI in a Delete command	Indirectly, as a child of a node being deleted
What <code>AccessType</code> specifies for the node	Delete allowed	Deleted	Deleted
	Delete not allowed	Not Deleted	Deleted

Table 1: Protection mechanisms for dynamic nodes

Note that this mechanism is completely independent of the ACL.

See chapter 9 for more information on DDF properties.

7. Properties of nodes

7.1 Definition

Properties of nodes are used to provide meta information about the node in question. All properties in this section are run-time properties, e.g. they are available during the lifetime of their associated node. Section 9.4.3 deals with the properties used in the context of device descriptions, which are completely separate from the run-time properties dealt with here.

Property	Explanation
ACL	Access Control List
Format	Specifies how node values should be interpreted
Name	The name of the node in the tree
Size	Size of the node value in bytes
Title	Human readable name
TStamp	Time stamp, date and time of last change
Type	The MIME type of a leaf node's value or a URN representing the management object identifier for interior nodes which root a management object sub-tree
VerNo	Version number, automatically incremented at each modification

Table 2: Run-time properties

It MUST NOT be possible to create new properties in an existing device.

7.2 Supported properties

Devices MAY support different sets of properties. Some properties are OPTIONAL for a device to implement, but all are REQUIRED for servers. The following table defines property support for devices.

Property	Device support
ACL	MUST
Format	MUST
Name	MUST
Size	MAY for leaf nodes MUST NOT for interior nodes
Title	MAY
TStamp	MAY
Type	MUST
VerNo	MAY

Table 3: Property support for devices

7.3 Property addressing

The properties of a node are addressed by appending `?prop=<property_name>` to the node's URI. For instance, to access the ACL of an OMA DM account a server could use one of these URIs;

```
./DMAcc/xyzInc?prop=ACL
DMAcc/xyzInc?prop=ACL
```

If a server addresses an unsupported property in a device, an error is returned in the form of an (406) `Optional feature not supported` status

7.4 Property values

Property values MUST be transported by OMA DM as UTF-8 encoded strings. Numerical property values MUST be converted to numerical strings, expressed in decimal. It is NOT RECOMMENDED to use a `<Meta>` element for property values.

It is unnecessary to use a `<Meta>` element for property values because they are all strings. This means that they would all have the same `<Meta>`, like this:

```
<Meta>
  <Format xmlns='syncml:metinf'>chr</Format>
  <Type xmlns='syncml:metinf'>text/plain</Type>
</Meta>
```

7.5 Operations on properties

The following table defines the allowed operations for each property. An operation on a property is equivalent to an OMA DM command that is performed by a server on the URI of the property.

Property	Applicable Commands	Comment
ACL	Get, Replace	Get and Replace are the only valid commands for ACL manipulation. Note that Replace always replaces the complete ACL.
Format	Get	Automatically updated by Add and Replace commands on the associated node.
Name	Get, Replace	A Replace is equivalent to a rename of the node.
Size	Get	Automatically updated by the device.
Title	Get, Replace	Only updated by server actions or software version changes.
TStamp	Get	Automatically updated by the device.
Type	Get	Automatically updated by Add and Replace commands on the associated leaf node.
VerNo	Get	Automatically updated by the device.

Table 4: Allowed operations on properties

Properties do not support the Add command. All mandatory properties, and those optional properties that a device implements, are automatically created when a new node is created. The values of the newly created node properties are all

empty, e.g. <Data/>. However, node properties that have a default value, or are automatically updated by the device, MUST be assigned appropriate values by the device.

Use of an unsupported command on a property will result in an error and the status (405) Command not allowed is returned.

Property values MAY also change for reasons other than direct server operations. For instance, some devices may allow the user to modify the ACL. If this occurs and the device supports the TStamp or VerNo properties, these MUST be updated.

7.5.1 Properties of permanent nodes

The semantics of most properties are independent of the permanent/dynamic status of the node to which they are associated. The exception is the Name property, which MUST NOT be changed for permanent nodes. Any attempt to perform such a change will fail.

7.6 Scope of properties

With the exception of the ACL property, all properties are only applicable to the node with which they are associated. Properties are individual characteristics of each node. There is no inheritance of property values, implied or specified, other than for the ACL property.

7.7 Detailed description of properties

7.7.1 ACL

The ACL property has some unique characteristics when compared to the other properties.

The access rights granted by an ACL are granted to server identifiers and not to the URI, IP address or certificate of a server. The server identifier is an OMA DM specific name for a server. A management session is associated with a server identifier through OMA DM authentication [DMSEC]. All management commands received in one session are assumed to originate from the same server.

7.7.1.1 ACL and inheritance

Every node MUST implement the ACL property, but there can be no guarantee that the ACL of every node has a value assigned to it. However, the root node MUST always have an ACL value. If a server performs a management operation on a node with no value set on the ACL the device MUST look at the ACL of the parent node for a value. If the parent does not have a value for the ACL, the device MUST look at the ACL of the parent's parent, and so on until an ACL value is found. This search will always result in a found value since the root node MUST have an assigned ACL value. This way, nodes can inherit ACL settings from one of their ancestors.

Inheritance only takes place if there is no value assigned to the complete ACL property, i.e. there are no commands present. As soon as any value for an ACL property is present, this value is the only valid one for the current node. ACL values MUST NOT be constructed by concatenation of values from the current node and its ancestors.

If an ACL does not contain any server identifier for a particular command, then this command MUST NOT be present in the ACL. Inheritance does not take place on a per command basis. Whenever an ACL is changed, by a server or by the client itself, care needs to be taken so that command names without server identifiers are not stored in the new ACL, resulting in an improperly formatted ACL.

A Get command on the ACL property of a node MUST return an empty data value, e.g. <Data/>, if the ACL for that node has no commands present (i.e. if the ACL has no value). In other words, the client SHOULD NOT locate an ancestor with a value for the ACL and provide that value.

7.7.1.2 The root ACL value

The value of the root is special in several ways. The server identifier, or identifiers, with Replace rights according to the root ACL can take control over all ACLs in the device. It is also the only node that **MUST** have a value assigned to the ACL. The default value for the root ACL **SHOULD** be `Add=*&Get=*&Replace=*`.

To ensure that any authenticated server always can extend the management tree, the root ACL value for the Add command **SHOULD NOT** be changed. The ACL value for the Add command in the root ACL **SHOULD** be `"*"`. Any attempt by a server to modify this ACL value **MAY** fail with the status code (405) `Forbidden`.

7.7.1.3 Changing the ACL

The rules for changing the ACL of a node are different for interior nodes and leaf nodes.

- Interior nodes
The ACL is valid for the node and all properties that the node may have, i.e. the right to access the ACL is controlled by the ACL itself. If a server identifier has Replace access rights according to the node ACL then this server identifier can change the ACL value.
- Leaf nodes
The ACL is valid for the node value and all properties that the node may have, except the ACL property itself. If a server identifier has Replace access rights according to the node ACL then this server identifier can change the node value and all property values, but not the ACL value.

However, for both types of nodes the right to change the ACL of the node is also controlled by the ACL of the parent node. Note that any parent node is by definition an interior node. This makes it possible for a server identifier with sufficient access to a parent node to take control of a child node. This is a two-step process where the server first changes the ACL of the child node and then can access the node value, list of children or other node properties. Note that even if a server has total access to the parent node according to the parent's ACL, this does not imply direct access to the child node value. To change a child node value the child ACL value **MUST** be changed first.

The ability for a server identifier with access to a parent node to take control of a child node implies that any server identifier with control of the root node can take control of the complete management tree. Doing so is a laborious process that involves many separate management commands being issued by the server. It also implies that, unless two server identifiers agree about passing authority between them, transition of authority cannot take place. This also makes 'hostile takeovers' of devices impossible. To provide the end user with the ability to change which server identifier that controls the root node some devices **MAY** implement a UI for this purpose.

Servers can explicitly set ACL values by performing a Replace operation on the ACL property of any given node. A successful completion of such an operation is signaled by an (200) `OK` status code. If the operation fails due to lack of device memory status code (420) `Device full` is returned. In addition, if the reason for failure is access violation the status code (425) `Permission denied` is returned.

If a server successfully creates a new node with the Add command the value of the node's ACL property is initially set to no value, e.g. `<Data/>`, . This means that the value is inherited from the parent node. However, there is one exception to this rule. If a server is adding an interior node and does not have Replace access rights on the parent of the new node then the device **MUST** automatically set the ACL of the new node so that the creating server has Add, Delete and Replace rights on the new node.

In cases where the above rule does not apply it is **RECOMMENDED** that the current server identifier explicitly set the new node ACL. This is achieved by using a Replace command on the ACL URI of the new node. The current server **SHOULD** set the ACL value so that itself has Delete, Get and Replace access.

Note that since the only command available to change an ACL is Replace, all existing server identifiers and access rights are overwritten. If a server wishes to keep the existing entries in an ACL it **MUST** read the ACL, perform the needed changes and then Replace the existing ACL with the new one.

7.7.1.4 Management Server Deletion

When a management server identifier is to be deleted from the device, the management tree MUST be scanned for nodes with ACL's held by the soon to be deleted server identifier. The reference to this server identifier MUST be deleted. In the event that this process removes the only server identifier for a particular command on a particular node, then this command is removed from the ACL for this node. Note that if all commands are removed from an ACL in this process, resulting in an ACL with no value, the ACL becomes inherited (see Section 7.7.1.1).

In the event that this process removes the only server identifier for a command in the root ACL, the ACL for that command MUST become "*" or a suitable factory default. This is in order to comply with the restriction on the root ACL specified in Section 7.7.1.2 in this document.

7.7.1.5 ACL syntax

The ACL structure is a list of server identifiers where each identifier is associated with a list of OMA DM command names [DMPRO]. The right to perform a command is granted if an identifier is associated with the name of the command that is to be performed.

The server identifier can also have a wildcard value assigned to it. This means that any server identifier used to access the node and/or its properties is granted access.

ACL are carried over OMA DM as a string. The string MUST be formatted according to the following simple grammar .

```

<acl> ::= <acl-value> | "No value"
<acl-value> ::= <acl-entry> | <acl-value> & <acl-entry>
<acl-entry> ::= <command> = <server-identifiers>
<server-identifiers> ::= <server-identifier> | <server-
identifier> + <server-identifiers>
<server-identifier> ::= * | "All printable characters
except '=', '&', '*', '+' or white-space characters."
<command> ::= Add | Delete | Exec | Get | Replace

```

For uniqueness, it is RECOMMENDED that the server identifier contain the domain name of the server. For efficiency reasons it is also RECOMMENDED that it is kept as short as possible. The wildcard value for a server identifier is character '*'. If a <server-identifier> has the value '*', then there SHOULD NOT be any other <server-identifier> values associated with this command in the current ACL. If an ACL entry contains both a wild card, '*', and a <server-identifier>, the access right granted by the <server-identifier> is overridden by the wild card.

Example ACL value:

```

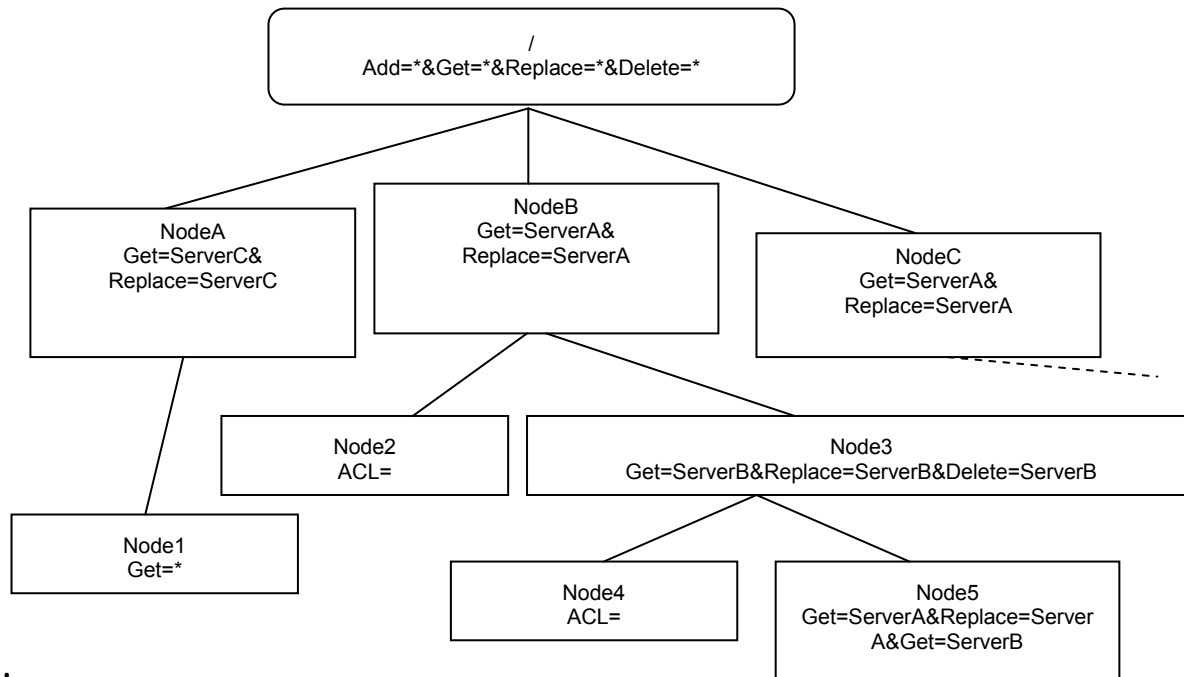
Add=www.sonera.fi-8765&Delete=www.sonera.fi-
8765&Replace=www.sonera.fi-8765+321_ibm.com&Get=*

```

There is no ACL representation for the Copy command. Copy exists as a command on its own mainly for efficiency reasons. Any result of a Copy command can always be created by a sequence of other commands. To successfully execute a Copy, a server needs to have the correct access rights for the equivalent Add, Delete, Get, and Replace commands.

7.7.1.6 ACL Example

Consider the following management tree:



Error!

Figure 2: Example management tree with ACLs

The following statements about this management tree are true:

- Any server can Get the value of `./NodeA/Node1`, but only ServerC can modify `./NodeA/Node1?prop=ACL` in one operation.
- No server can directly Delete or Replace the value of `./NodeA/Node1`.
- A Get request on `./NodeA/Node1?prop=ACL` will return `Get=*`.
- A Get request on `./NodeB/Node3/Node4?prop=ACL` will return no value, e.g. `<Data/>`.
- A Replace request on `./NodeB/Node3/Node5` by ServerA will be successful.

7.7.2 Format

The Format property always maintains information about the data format of the current **node** value. Allowed formats are defined in [DMSTDOBJ]. The entity setting the value **MUST** supply the format information in the same command that is used to set the value. The format information is carried by the Format tag in the meta information for the Item that has the data to be set. The property value is represented by a string. See section 7.7.7.1 for an example.

Note that interior nodes **MUST** have `node` as the Format value.

When a node's native value is B64-encoded binary, the value `b64` is used as the Format property. A Meta Format value of "b64" **MAY** be used in the following situation. When data has a binary form (as indicated by the Mime Type in the Meta Type), and the data is sent over XML, then the Meta Format **MUST** be `b64`. The recipient of this data then unencodes the data and associates the Format property `bin` with the data so that any time a Get command on the Format property of this node is executed, the response **MUST** be `bin`.

In effect, the binary data exists as binary on the server, and is processed as binary on the client. It may be only temporarily encoded in Base64 if it needs to be sent over XML.

When binary data is sent over WBXML the Meta Format MUST be `bin`, if the Base64 encoding is not used and the Meta Format MUST be `b64`, if the Base64 encoding is used. In either case, the Base64 encoding is used only in transport. The management tree property Format for this data MUST be `bin`.

7.7.3 Name

This property reflects the name of the node to which it belongs. This is the name by which the node is addressed in the management tree. The Name property is a string with a maximum length that is defined in `./DevDetail/URI/MaxSegLen` as described in [DMSTDOBJ].

When a new node is created, the value of the Name property MUST be assigned with the value of last segment in the Target URI.

This property supports the Replace command. When a Replace command for this property is received by the device, it MUST first check that the result of the command does not lead to an inconsistent tree, e.g. duplicate node names, before the command is executed. Since it is only the last segment of the current node's URI that is changed, the search for possible duplicate names can be limited to the siblings of the current node.

7.7.4 Size

The Size property stores the current size of the node value. The property value is a 32 bit unsigned integer.

When a leaf node is assigned a value with an Add, Copy or Replace command, it is the responsibility of the client to update the Size property of the node. The value of the Size property MUST be equal to the size of the new node value in bytes.

Note that the Size property of a binary data value MUST indicate the size in bytes of the actual (unencoded) value, and NOT the length of a Base64 encoded string that may or may not have been used to convey the data over XML.

Also note that the Meta Size tag used in conveying data always indicates the size of the data in the message. If the message is in XML and the data is binary, then the data will be encoded. Consequently, the Meta Size of data that is encoded as `b64` is the length of the Base64 encoded string.

7.7.5 Title

The Title property is used to store a human readable, alphanumeric string that provides some information about the node to which this property belongs. The Title property is a string with a maximum length of 255 bytes.

7.7.6 TStamp

This property is a record of the date and time of the last change in value of the node which has this property. The value is represented by a string containing a UTC based, ISO 8601 basic format, complete representation of a date and time value, e.g. `20010711T163817Z` means July 11, 2001 at 16 hours, 38 minutes and 17 seconds.

7.7.7 Type

The Type property is inspired by the concept of typed data in programming languages. For leaf objects, the Type property describes the kind of data stored as the object's value. For interior objects, the Type property identifies the collection rooted at that interior node.

7.7.7.1 Leaf objects

The Type property of a leaf object is always the MIME type of the current object value. Allowed types are defined in [AMT]. The entity setting the value MUST supply the type information in the same command that is used to set the value. The Type tag in the Meta information carries the MIME type information for the Item. The property value is represented by a string.

An object's description MAY specify that the object can store more than one MIME type. Consequently, a server that modifies an object's value MUST supply the MIME type of the data when the object value is set.

Example:

The following Add command illustrates how the Type and Format properties are set:

```
<Add>
  <CmdID>4</CmdID>
  <Item>
    <Target>
      <LocURI>Vendor/ISP/yyy/GWName</LocURI>
    </Target>
    <Meta>
      <Format xmlns='syncml:metinf'>chr</Format>
      <Type xmlns='syncml:metinf'>text/plain</Type>
    </Meta>
    <Data>www.yyy.se</Data>
  </Item>
</Add>
```

7.7.7.2 Interior objects

The Type property of an interior object is represented by a string. The property MAY have no value. When the property does have a value, it MUST represent the management object identifier of the collection of objects rooted at the current object. The management object identifier is formed by combining the reversed domain name of the owner with the name and version of the object, e.g. "org.openmobilealliance/1.2/DevDetail". The syntax for the management object name is as follows:

```
<management_object_name> ::=
<domain>/<major>.<minor>/<name>[ /<name>]*

<domain> ::= "reversed internet domain name"

<major> ::= [1-9][0-9]*

<minor> ::= 0 | [1-9][0-9]*

<name> ::= alphanum
```

Notes:

1. The domain is as used in some programming languages to name classes uniquely, and may include sub-domains, e.g. "org.openmobilealliance.dm" (a fictional example).
2. The major and minor elements of the version are considered unsigned integer counters, without leading zeros.
3. For simplicity and portability, each name element is currently restricted to alphanumeric characters. (Alphanum is defined in [RFC2396].)

The domain name of the object owner specifies a namespace. In that namespace, the management object identifier MUST be unique. A server that wishes to obtain the DDF file corresponding to the object does so an implementation-specific way. The server may maintain a local repository of DDF files describing objects that are managed by the server. It is recommended that manufacturers and standards organizations maintain web-accessible repositories of these documents. Then servers could be implemented to obtain DDF files automatically (as needed) by maintaining a small mapping from organization (domain) to the web location (URL) of the DDF file, given the management object identifier. Alternatively, another technique could be specified in a future version of OMA DM specifications.

Note that a client may store DDF files internally. A management object could be designed to provide a consistent location within the management tree for these descriptions.

When an object has a DDF description, and an ancestor of that object also has a DDF description, the two descriptions SHOULD be consistent. For example, the OMA DM Account information is described by a specific DDF. A manufacturer may supply a DDF file for an entire device, which corresponds to the DDF of the root. The information in the root DDF which describes the OMA DM Account information SHOULD correspond to the description in the management object identifier of the DMAcc object. In the case of a conflict, the more local management object identifier MUST be used.

The server provides the management object identifier in the Type property when creating interior objects (see the example below). Device manufacturers would typically provide it for permanent objects.

Example:

The following Add command illustrates how the Type property might be set when an interior object is created:

```
<Add>
  <CmdID>3</CmdID>
  <Item>
    <Target>
      <LocURI>Vendor/ISP/yyy/Profile</LocURI>
    </Target>
    <Meta>
      <Format xmlns='syncml:metinf'>node</Format>
      <Type xmlns='syncml:metinf'>se.yyy.dm/2.10/Profile/Class1</Type>
    </Meta>
  </Item>
</Add>
```

Note that in the example above, a sub-domain is used (dm.yyy.se), the major version is 2 (two), the minor version is 10 (ten), and the name is “Profile/Class1”.

The management object identifier is intended to be useful under the following circumstances. A management server MAY use DDF definition files from different devices to identify which positions the different devices stores management objects. A management server that examines the management tree in a device may be able to use the management object identifier to obtain a description of an object that was previously unknown to this server. This situation could arise many ways, for example:

- A different management server in the same organization may have created the collection of objects in the device.
- A management server from a different organization may have created the collection of objects in the device.
- The collection of objects may have been added to the device’s management tree by software in the device itself, perhaps in response to the addition of a piece of hardware to the device (e.g. a card inserted into an expansion slot).

7.7.8 VerNo

VerNo is a 16 bit unsigned integer. Each time a node with this property changes value, through a management operation or other event, this value is incremented. If the property value has reached $FFFF_{16}$, and then is incremented, it returns to 0000_{16} .

8. Device Management Tree Exchange

The Management Tree is a hierarchical arrangement of managed objects in a device, which defines the management view of the device. In order to effectively manage a device, the management server should be able to manage relevant parts of the management tree in the device. Without knowing the management tree, the DM server would not be able to access a specific managed object in the device and hence effectively manage the device.

The method for exchanging management tree information between a DM client and a DM server involves:

- Representing the wanted information from the tree, without loss of information about its hierarchical structure
- Sending it in an OMA DM command to the recipient.

Management tree information can be represented and delivered by using an XML representation as described in section 0.

The OMA DM specifications allow the DM server to add, replace and delete parts of a management tree in a single package, but to get the information from the client DM server requires multiple round trips. The following section specifies a way to `Get` a part of a management tree in a single package.

8.1 Requesting a Part of a Management Tree

The DM server uses the `Get` command with an attribute in the URI to retrieve the management tree information identified by the attribute in the URI. The client SHOULD send all the requested information and the information of the child nodes to which the DM server has a read access right as specified in the table below. In case this feature is not supported the client SHOULD return status code (406) `Optional Feature Not Supported`.

The attributes are added to the URI specified in the `Item` element inside the `Get` command. The `Get` command and the URI in it have the following format:

```
GET <URI>?list=<attribute>
```

Where the attribute is addressed by appending `?list=<attribute>` to the retrieved node's URI.

The possible attributes are:

Attribute	Description
Struct	The structure of a management tree is returned, without any data.
StructData	The structure of the management tree is returned, with the leaf nodes data.
TNDS	The returned data is a serialized sub-tree as defined in [DMTNDS].

Table 5: Possible attributes for management tree information retrieval

8.2 Representation Response of the Management Tree

Representing the tree using multiple `Item` elements inside the OMA DM `Result` command is the simplest approach. Requested information from the node (URI in the `Get` command with attribute) is embedded into an `Item` inside a `Result` command with the following requirements (See also the examples in the Appendix A):

- `Struct` attribute – `Meta` MUST be used to indicate the `Type` and `Format` of the node, unless the `Type` and `Format` have the default values [META]. `LocURI` inside the `Source` MUST indicate the URI of the node.

- *StructData* attribute - *Meta* MUST be used to indicate the *Type* and *Format* of the node, unless the *Type* and *Format* have the default values [META]. *LocURI* inside the *Source* MUST indicate the URI of the node. Leaf node data MUST be included to the *Data* element.
- *TNDS* attribute – *META* MUST be used to indicate the *Type* and *Format* as defined in [DMTNDS]. *LocURI* inside the *Source* MUST indicate the URI of the starting node. If no extra attributes are included after “TNDS” the device SHOULD include all valid properties that that server has access rights to receive. Optionally the server MAY request which properties that only SHOULD be included in the Serialized management sub-tree via adding “+” and the property name. More than one property name are allowed in the list. The server may also exclude some properties from the default, all property-list, via adding a “-“character followed by the property name. It is also possible to add multiple “-PropertyName” after each other. The include property “+” and remove property “-“are not possible to combine in the same Get command. Valid Property names are all properties defined in chapter 6.1 in [DMTNDS] which are inside “RTProperties” and additionally the “Value” property. The Client MUST return Status Code “406 Optional feature not supported” if the device does not support TNDS or anyone of the present properties in the presented list.
Example on valid property list: “?list=TNDS+Value+ACL” for only data and ACL or “?list=TNDS-Format” for all supported properties except the Format Property.

For *Struct* and *StructData* this information from the requested nodes can be included into a multiple *Item* elements inside a *Result* command or there can be multiple *Result* commands with single *Item*.

9. Device Description Framework

9.1 Rationale for a Device Description Framework

In an ideal world all devices would display the same structure and behavior to a management system. But since different vendors are competing with each other on the market for various kinds of devices, it seems very unlikely that this would ever happen. But management systems still need to understand each individual device even though they do appear to have different internal structures and behaviors.

To address this issue the concept of a device description framework is introduced. In short this framework prescribes a way for device vendors to describe their devices so that a management system can understand how to manage the device. The following figure illustrates the principle.

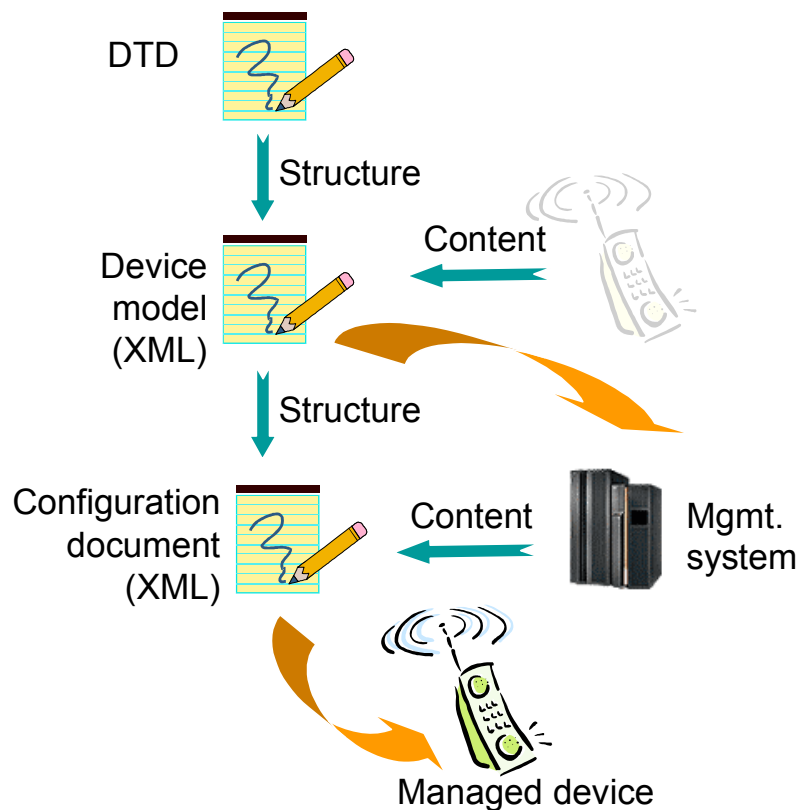


Figure 3: Conceptual view of how a description framework is used

By using a description framework we also make sure that the total management system based on OMA DM is flexible and easily extendible. And that it can accommodate not only the demands we put on it today but also the ones we might have tomorrow. We also avoid a situation where all future management needs would have to be standardized before they could be used in devices to simplify the use of these devices.

It is important to note that the description framework needs to co-exist with the existing standardized management objects, and that the borderline between the standardized management objects and management objects described by the framework will change over time. This will mainly happen when a standards body decides to create specifications on how their technology should be managed. It is in the interest of the OMA Device Management committee to encourage and support such initiatives from standard bodies active in wireless standardization, so that the set of standardized management objects increases.

9.2 The OMA DM Device Description Framework

Today there exist a number of different description frameworks, but none of these seem to suit the purposes of OMA DM. There are also activities in other standards bodies that aim to develop new frameworks specifically for the wireless industry. With this in mind, OMA DM does currently not specify the use of any particular framework.

However, the need for a description framework remains and therefore OMA DM RECOMMEND using the following simple framework as an interim solution. This proposed description framework is defined by an XML DTD. Descriptions of management objects, or complete management trees, are valid XML documents. Device manufactures using the description framework MUST make the device descriptions available to management servers. The mechanism for this is currently not being standardized.

The OMA DM Device Description Framework DTD is defined in [DMDDFDTD].

9.3 XML usage

The OMA DM DDF information XML documents are specified using well-formed XML. However, they need not be valid XML. That is, they do not need to specify the XML prolog. They only need to specify properly identified name space element types from the OMA DM DDF information DTD. This restriction allows for the OMA DM DDF information to be specified with greater terseness than would be possible if a well-formed, valid XML document was REQUIRED.

This DTD makes heavy use of XML name spaces. Name spaces MUST be declared on the first element type that uses an element type from the name space.

Names in XML are case sensitive. The element types in the OMA DM DDF information DTD are defined in [DMDDFDTD] or the URN `syncml:dmdfd`.

OMA DM also makes use of XML standard attributes, such as `xml:lang`. Any XML standard attribute can be used in a XML document conforming to this DTD.

9.4 Framework Elements

This section explains the elements used in the description framework DTD.

9.4.1 Structural elements

These elements provide various kinds of structural information of the described management object.

9.4.1.1 MgmtTree

Usage: Container for one or more described management objects.

Parent Elements: none

Restrictions: This MUST be the root element of all descriptions.

Content Model: (VerDTD, Man?, Mod?, Node+)

9.4.1.2 VerDTD

Usage: Specifies the major and minor version identifier of the OMA DM Description Framework specification used to represent the OMA DM description.

Parent Elements: MgmtTree

Restrictions: Major revisions of the specification create incompatible changes that will generally require a new parser. Minor revisions involve changes that do not impact basic compatibility of the parser. When the XML document conforms to this

revision of the OMA DM Device Description Framework the value MUST be 1.2. The element type MUST be included in the MgmtTree.

Content Model: (#PCDATA)

9.4.1.3 Man

Usage: Specifies the manufacturer of the device.

Parent Elements: MgmtTree

Restrictions: This element is OPTIONAL.

Content Model: (#PCDATA)

9.4.1.4 Mod

Usage: Specifies the model number of the device.

Parent Elements: MgmtTree

Restrictions: This element is OPTIONAL.

Content Model: (#PCDATA)

9.4.1.5 Node

Usage: Specifies a node.

Parent Elements: MgmtTree

Restrictions: This element is recursive. A Node with a Value element MUST always terminate the recursion. It is possible for a Node to omit both the next recursive Node and a Value, this means that the hierarchy of Nodes continues elsewhere. This can be used to increase readability of very deep trees. In the continuation, the Path element MUST contain a full URI that specifies the insertion point in the tree.

Content Model: (NodeName, Path?, RTProperties?, DFProperties?, (Node*|Value?))

Example: The following XML is a description of a number of nodes that form the URI Vendor/ISP/GWInfo/GWName. Note that all the details of DFProperties are deliberately left out.

```
<MgmtTree>
  <Node>
    <NodeName>Vendor</NodeName>
    <DFProperties>...</DFProperties>
  </Node>
  <Node>
    <NodeName>ISP</NodeName>
    <DFProperties>...</DFProperties>
  </Node>
  <Node>
    <NodeName>GWInfo</NodeName>
    <DFProperties>...</DFProperties>
  </Node>
  <Node>
    <NodeName>GWName</NodeName>
    <DFProperties>...</DFProperties>
    <Value>gw.yyy.se</Value>
  </Node>
</MgmtTree>
```

9.4.1.6 NodeName

Usage: Specifies the name of the described node.

Parent Elements: Node

Restrictions: See [RFC2396] for general restrictions on URI. The NodeName element MAY be empty. If empty, this means that the name of the node MUST be assigned when the node is created. When the node name is assigned at node creation time, the value for the name is set to the last segment of the URI specified as Target for the command that results in the node being created. See also section 7.7.3.

Content Model: (#PCDATA)

9.4.1.7 Path

Usage: Specifies the URI up to, but not including, the described node.

Parent Elements: Node

Restrictions: OPTIONAL element. If omitted, the URI for the node MUST be constructed by concatenating all ancestral NodeName and Path values. This concatenated value MUST form the correct URI. Path SHOULD only be used inside Node elements that are child elements to the MgmtTree element. For general restrictions, see [RFC2396].

Content Model: (#PCDATA)

Example: The following XML is an alternative way to describe the same management objects as in the example in section 9.4.1.5. This description specifies the same URI as the other example: Vendor/ISP/GWInfo/GWName . Note that all the details of DFProperties are deliberately left out.

```
<MgmtTree>
  <Node>
    <NodeName>Vendor</NodeName>
    <DFProperties>...</DFProperties>
  </Node>
  <Node>
    <NodeName>ISP</NodeName>
    <Path>Vendor</Path>
    <DFProperties>...</DFProperties>
  </Node>
  <Node>
    <NodeName>GWInfo</NodeName>
    <Path>Vendor/ISP</Path>
    <DFProperties>...</DFProperties>
  </Node>
  <Node>
    <NodeName>GWName</NodeName>
    <Path>Vendor/ISP/GWInfo</Path>
    <DFProperties>...</DFProperties>
    <Value>gw.yyy.se</Value>
  </Node>
</MgmtTree>
```

9.4.1.8 Value

Usage: Specifies a default value for nodes that are instantiated using the current description.

Parent Elements: Node

Restrictions: OPTIONAL element. If omitted, the node description does not specify any default value for the node. In this case the initial value of new nodes are undefined.

Content Model: (#PCDATA)

9.4.1.9 RTProperties

Usage: Aggregating element for run-time properties, i.e. properties that the nodes have in a device at run-time. Used to specify which properties the described node supports at run-time. Can also be used to supply default values for supported run-time properties.

Parent Elements: Node

Restrictions: OPTIONAL element. If omitted, the node MUST only support the mandatory run-time properties ACL, Format, Name, Size and Type. If any optional properties are supported, they MUST be specified by using this element.

Content Model: (ACL?, Format?, Name?, Size?, Title?, TStamp?, Type, VerNo?)

9.4.1.10 DFProperties

Usage: Aggregating element for description framework properties, i.e. properties that nodes have in the description framework and that are not explicitly present at run-time.

Parent Elements: Node

Restrictions: This is a REQUIRED element.

Content Model: (AccessType, DefaultValue?, Description?, DFFormat, Occurrence?, Scope?, DFTitle?, DFType)

9.4.2 Run-time property elements

The usage of the run-time properties in the description framework reflects the mandatory/optional status of the corresponding run-time property. These elements can also be used to describe default values for the supported properties. Since these properties can change at run-time, the values of these properties in the description and in a real device will differ.

The `RTProperties` element, which encapsulates the run-time properties, is OPTIONAL within its parent element `Node`. The purpose of this is to make it possible to omit the `RTProperties` element if only the mandatory properties are supported and there is no need to specify any default values. If the `RTProperties` element is used in a description, all the mandatory run-time properties MUST be specified.

9.4.2.1 ACL

Usage: Specifies support for the ACL property. MAY be used to specify a default value for the property.

Parent Elements: `RTProperties`

Restrictions: If a value is specified it MUST be formatted according to section 7.7.1.5.

Content Model: (#PCDATA)

9.4.2.2 Format

Usage: Specifies support for the Format property. MAY be used to specify a default value for the property.

Parent Elements: `RTProperties`

Restrictions: If a default value is specified for the described node, the Format property MUST specify the correct format of the node value.

Content Model: (b64 | bin | bool | chr | int | node | null | xml | date |time |float)

9.4.2.3 Name

Usage: Specifies support for the Name property. MAY be used to specify a default value for the property. Parent Elements: `RTProperties`

Restrictions: See [RFC2396]. If a default property value is specified, it SHOULD be the same as the value of the `nodeName` element.

Content Model: (`#PCDATA`)

9.4.2.4 Size

Usage: Specifies support for the Size property. MAY be used to specify a default value for the property. Within its parent element, the `Size` element is defined as optional. This is done only to facilitate the omission of the element from nodes describing interior nodes. In node elements describing leaf nodes the `Size` element MUST be used within `RTProperties`.

Parent Elements: `RTProperties`

Restrictions: If a value is specified it MUST be formatted according to section 7.4.

Content Model: (`#PCDATA`)

9.4.2.5 Title

Usage: Specifies support for the Title property. MAY be used to specify a default value for the property.

Parent Elements: `RTProperties`

Restrictions: If a value is specified it MUST be formatted according to section 7.4.

Content Model: (`#PCDATA`)

9.4.2.6 TStamp

Usage: Specifies support for the TStamp property. MAY be used to specify a default value for the property.

Parent Elements: `RTProperties`

Restrictions: If a value is specified it MUST be formatted according to section 7.4.

Content Model: (`#PCDATA`)

9.4.2.7 Type

Usage: Specifies support for the Type property. MAY be used to specify a default value for the property.

Parent Elements: `RTProperties`

Restrictions: For leaf nodes, if a default value is specified for the described node, the Type property MUST be used to specify the correct MIME type of the node's present value using a single MIME element. For interior nodes a `DDFName` element MUST be present and specify a valid management object identifier, which MAY be empty.

Content Model: (`MIME | DDFName`)

9.4.2.8 VerNo

Usage: Specifies support for the VerNo property. MAY be used to specify a default value for the property.

Parent Elements: `RTProperties`

Restrictions: If a value is specified it MUST be formatted according to section 7.4.

Content Model: (#PCDATA)

9.4.2.9 b64

Usage: OMA DM format description. Specifies that the node value is Base64 encoded.

Parent Elements: *Format*, *DFFormat*

Restrictions: None.

Content Model: EMPTY

9.4.2.10 bin

Usage: OMA DM format description. Specifies that the node value is binary data.

Parent Elements: *Format*, *DFFormat*

Restrictions: None.

Content Model: EMPTY

9.4.2.11 bool

Usage: OMA DM format description. Specifies that the node value is a Boolean.

Parent Elements: *Format*, *DFFormat*

Restrictions: None.

Content Model: EMPTY

9.4.2.12 chr

Usage: OMA DM format description. Specifies that the node value is text.

Parent Elements: *Format*, *DFFormat*

Restrictions: The character set used is specified either by the transport protocol, MIME content type header or XML prologue.

Content Model: EMPTY

9.4.2.13 int

Usage: OMA DM format description. Specifies that the node value is an integer.

Parent Elements: *Format*, *DFFormat*

Restrictions: None.

Content Model: EMPTY

9.4.2.14 node

Usage: OMA DM format description. Specifies that the node is an interior node.

Parent Elements: *Format*, *DFFormat*

Restrictions: This Format MUST only be used for interior nodes.

Content Model: EMPTY

9.4.2.15 null

Usage: OMA DM format description. Specifies that the node value is null.

Parent Elements: *Format*, *DFFormat*

Restrictions: None.

Content Model: EMPTY

9.4.2.16 xml

Usage: OMA DM format description. Specifies that the node value is XML data.

Parent Elements: *Format*, *DFFormat*

Restrictions: None.

Content Model: EMPTY

9.4.2.17 date

Usage: OMA DM format description. Specifies that the node value is a date in ISO 8601 format with the century being included in the year [ISO8601].

Parent Elements: *Format*, *DFFormat*

Restrictions: None.

Content Model: EMPTY

9.4.2.18 time

Usage: OMA DM format description. Specifies that the node value is a time in ISO 8601 format [ISO8601].

Parent Elements: *Format*, *DFFormat*

Restrictions: None.

Content Model: EMPTY

9.4.2.19 float

Usage: OMA DM format description. Specifies that the node value is a real number corresponding to a single precision 32 bit floating point type as defined in XML Schema 1.0 as the `float` primitive type [XMLSCHEMADT].

Parent Elements: *Format*, *DFFormat*

Restrictions: None.

Content Model: EMPTY

9.4.2.20 MIME

Usage: Specifies the MIME type of the current node value.

Parent Elements: *Type*, *DFTType*

Restrictions: MUST only contain valid MIME type identifiers. See [META].

Content Model: (#PCDATA)

9.4.2.21 DDFName

Usage: Specifies the management object identifier of the management object rooted at this node, or is empty.

Parent Elements: Type, DFType

Restrictions: MUST only contain a valid management object identifier or be empty. See 7.7.7.2.

Content Model: (#PCDATA)

9.4.3 Framework property elements

The properties that described nodes have in the description framework are specified with framework property elements. These are not the same as the run-time properties of an instantiated node in a device. These properties express other information about nodes that management servers may need. The framework properties MUST NOT change at run-time since such a change may introduce discrepancies between the run-time node and the corresponding description. The following table defines the framework node properties.

Element/Property	Explanation	Usage
AccessType	Specifies which commands are allowed on the node.	MUST
DefaultValue	The node value used in a device unless specifically set to a different value.	MAY
Description	The human readable description of the node.	MAY
DFFormat	The data format of the described node.	MUST
Occurrence	Specifies the number of instances that MAY occur of the node.	MAY
Scope	Specifies whether this is a permanent or dynamic node.	MAY
DFTitle	The human readable name of the node.	MAY
DFType	For leaf nodes, the MIME type of the node value. For interior nodes, a management object identifier or empty.	MUST
CaseSense	Specifies whether the node name and names of descendant nodes in the tree below should be treated as case sensitive or case insensitive.	MAY

Table 6: Framework property elements

9.4.3.1 AccessType

Usage: Specifies which commands are supported for the described node. This property is independent of the ACL run-time property.

Parent Elements: DFProperties

Restrictions: The value of this property MUST be an unordered list of the valid OMA DM commands.

Content Model: (Add?, Copy?, Delete?, Exec?, Get?, Replace?)

9.4.3.2 DefaultValue

Usage: Specifies the “factory default” value of the node, if such a value exists.

Parent Elements: DFProperties

Restrictions: The MIME type of the value MUST correspond with the MIME type specified by the DFType property.

Content Model: (#PCDATA)

9.4.3.3 Description

Usage: A human readable description of the described node. This is used to convey any relevant information regarding the node that is not explicitly given by the other properties.

Parent Elements: DFProperties

Restrictions: Descriptions SHOULD be kept as short as possible.

Content Model: (#PCDATA)

9.4.3.4 DFFormat

Usage: Specifies the data format of the described node.

Parent Elements: DFProperties

Restrictions: For interior nodes the Format MUST be node.

Content Model: (b64 | bin | bool | chr | int | node | null | xml | date | time | float)

9.4.3.5 Occurrence

Usage: Specifies the potential number of instances that MAY occur of the described node.

Parent Elements: DFProperties

Restrictions: If the property is omitted the node occurrence is exactly one.

Content Model: (One | ZeroOrOne | ZeroOrMore | OneOrMore | ZeroOrN | OneOrN)

9.4.3.6 Scope

Usage: Specifies whether the described node is permanent or dynamic.

Parent Elements: DFProperties

Restrictions: The value is indicated by the tags `Permanent` and `Dynamic` in the description framework. This property is OPTIONAL, if omitted the described node is `Dynamic`.

Content Model: (Permanent | Dynamic)

9.4.3.7 DFTitle

Usage: A human readable name for the node description.

Parent Elements: DFProperties

Restrictions: Titles SHOULD be kept as short and informative as possible.

Content Model: (#PCDATA)

9.4.3.8 DFType

Usage: For leaf nodes, one or more elements specify the MIME types the described node supports. For interior nodes, a single MIME element MUST specify be present and specify a valid management object identifier, which MAY be empty.

Parent Elements: DFProperties

Restrictions: Note that a leaf node can support multiple MIME types, e.g. a ring signal node might support both audio/mpeg and audio/MP4-LATM. The values of the DFTYPE property MUST be registered MIME types.

Content Model: (MIME+ | DDFName)

9.4.3.9 Add

Usage: Specifies support for the OMA DM Add command.

Parent Elements: AccessType

Restrictions: None.

Content Model: EMPTY

9.4.3.10 Copy

Usage: Specifies support for the OMA DM Copy command.

Parent Elements: AccessType

Restrictions: None.

Content Model: EMPTY

9.4.3.11 Delete

Usage: Specifies support for the OMA DM Delete command.

Parent Elements: AccessType

Restrictions: None.

Content Model: EMPTY

9.4.3.12 Exec

Usage: Specifies support for the OMA DM Exec command.

Parent Elements: AccessType

Restrictions: None.

Content Model: EMPTY

9.4.3.13 Get

Usage: Specifies support for the OMA DM Get command.

Parent Elements: AccessType

Restrictions: None.

Content Model: EMPTY

9.4.3.14 Replace

Usage: Specifies support for the OMA DM Replace command.

Parent Elements: *AccessType*

Restrictions: None.

Content Model: EMPTY

9.4.3.15 One

Usage: Specifies that the described node can occur exactly one (1) time.

Parent Elements: *Occurrence*

Restrictions: None.

Content Model: EMPTY

9.4.3.16 ZeroOrOne

Usage: Specifies that the described node can occur either one (1) time or not at all.

Parent Elements: *Occurrence*

Restrictions: None.

Content Model: EMPTY

9.4.3.17 ZeroOrMore

Usage: Specifies that the described node can occur an unspecified number of times, or not occur at all.

Parent Elements: *Occurrence*

Restrictions: None.

Content Model: EMPTY

9.4.3.18 ZeroOrN

Usage: Specifies that the described node can occur any number times up to N times, or not occur at all.

Parent Elements: *Occurrence*

Restrictions: N MUST be specified as a character string representing a positive integer value between 2 and 65536.

Content Model: (#PCDATA)

9.4.3.19 OneOrMore

Usage: Specifies that the described node can occur an unspecified number of times, but MUST occur at least once.

Parent Elements: *Occurrence*

Restrictions: None.

Content Model: EMPTY

9.4.3.20 OneOrN

Usage: Specifies that the described node can occur any number times up to N times but MUST occur at least once.

Parent Elements: Occurrence

Restrictions: N MUST be specified as a character string representing a positive integer value between 2 and 65536.

Content Model: (#PCDATA)

9.4.3.21 Dynamic

Usage: Specifies that the described node is dynamic.

Parent Elements: Scope

Restrictions: None.

Content Model: EMPTY

9.4.3.22 Permanent

Usage: Specifies that the described node is permanent.

Parent Elements: Scope

Restrictions: None.

Content Model: EMPTY

9.4.3.23 CaseSense

Usage: Specifies whether the node name and names of descendant nodes in the tree below should be treated as case sensitive or case insensitive.

Parent Elements: DFProperties

Restrictions: MUST only contain value CS or CIS.

Content Model: (CS | CIS)

9.4.3.24 CS

Usage: Case sensitivity declaration. Specifies that child node names MUST be treated as case sensitive.

Parent Elements: CaseSense

Restrictions: None.

Content Model: EMPTY

9.4.3.25 CIS

Usage: Case insensitivity declaration. Specifies that child node names MUST be treated as case insensitive.

Parent Elements: CaseSense

Restrictions: None.

Content Model: EMPTY

9.5 Shortcomings of the OMA DM description framework

It is not possible to specify that only one node of an allowed set can be instantiated at a time. Compare with the DTD construct (A | B), this is currently described by making both A and B optional, but there is no way to represent that they are mutually exclusive. However, this is mostly a problem that occurs when mapping existing management objects onto the description framework. When new management objects are designed for the framework, this situation can be avoided.

10.WBXML Definition

The following tables define the token assignments for the mapping of the DMDDF related DTDs and element types into WBXML as defined by [WBXML].

10.1 Code Page Definitions

The following code page tokens represent DM DDF public identifiers. This version of the DM protocol specification utilizes the WBXML code page tokens for identifying DTDs.

DTD Name	WBXML Code Page Token (Hex Value)	Formal Public Identifier
DMDDF	02	-//OMA//DTD-DM-DDF 1.2//EN

Table 7: Code page tokens

10.2 Token Definitions

The following WBXML token codes represent element types (i.e., tags) from code page x02 (two), OMA DM DDF DTD.

Element Type Name	WBXML Tag Token (Hex Value)
AccessType	05
ACL	06
Add	07
b64	08
bin	09
bool	0A
chr	0B
CaseSense	0C
CIS	0D
Copy	0E
CS	0F
date	10
DDFName	11
DefaultValue	12
Delete	13
Description	14
DFFormat	15

DFProperties	16
DFTitle	17
DFType	18
Dynamic	19
Exec	1A
float	1B
Format	1C
Get	1D
int	1E
Man	1F
MgmtTree	20
MIME	21
Mod	22
Name	23
Node	24
node	25
NodeName	26
null	27
Occurrence	28
One	29
OneOrMore	2A
OneOrN	2B
Path	2C
Permanent	2D
Replace	2E
RTProperties	2F
Scope	30
Size	31
time	32

Title	33
TStamp	34
Type	35
Value	36
VerDTD	37
VerNo	38
xml	39
ZeroOrMore	3A
ZeroOrN	3B
ZeroOrOne	3C

Table 8: Token definitions

Appendix A. Change History

(Informative)

A.1 Approved Version History

Reference	Date	Description
OMA-SyncML-DMTND-V1_1_2-2003	12-Dec-2003	First version released by OMA.

A.2 Draft/Candidate Version 1.2 History

Document Identifier	Date	Sections	Description
Draft version OMA-SyncML-DMTND-V1_2 OMA-DM-2004-0190	11 Aug 2004	All 2.1 5 9.3, 9.4.1.2	Template update Reference list update Incorporated CRs: OMA-DM-2004-0063R02-LocURI-Case-Sensitivity OMA-DM-2004-0064R01-Date-Time-Float-Data-Formats
Draft Version OMA-SyncML-DMTND-V1_2	17 Sep 2004	All 5, 9.4.3 2.1, 9.4.2.2, 9.4.2.17, 9.4.2.18, 9.4.2.19, 9.4.3.4	Changed to correct template Incorporated CRs: OMA-DM-2004-0095R01-CaseSense OMA-DM-2004-0194 LATE-CR_Clerical-Date-Time-Float-Revisions
Draft Versions OMA-DM-TND-V1_2	7 Dec 2004	All 2.1, 9.3, 10 9.3 9.3 (new), 9.4.1.5, appendix D 2.1, 8.1, 8.2	Template updated to 20040928 version SyncML DM changed to OMA DM Incorporated CRs: OMA-DM-2004-0269-CR-BLOB-MO-DMTND OMA-DM-2004- 0274R01 -CR-Inconsistency-In-Case-Sensitive OMA-DM-2004-0289-CR-BugfixesDMTND OMA-DM-2004-0326-CR-TNDSMO-Get-DMTND
	15 Dec 2004	1, 9.3, 9.4.2	Editorial changes at the Laguna Beach meeting
Draft Versions OMA-DM-TND-V1_2	4 Jan 2005	Front page 2.1 appendix B	Corrected date, specification name and version Updated normative references to be as in the ERELD OMA-DM-2004-0229R02-CR-DMConReqs-From-DMTND
	11 Jan 2005	2.1 7.1, 7.7.7, 7.7.7.2 9.3, 9.4.1.2 A.2	Corrected DM DDF name OMA-DM-2004-0328R01-CR-MO-Identifier-Bugfix-DMTND Editorial corrections; "SyncML DDF" changed to "OMA DM DDF" Corrected table A.2 (this table) to the same layout as in the template
	13 Jan 2005	3.2 9.4.2.7, 9.4.2.21, 9.4.3, 9.4.3.8	OMA-DM-2004-0345R01-TND-definitions Corrections due to missing changes in OMA-DM-2004-0328R01-CR-MO-Identifier-Bugfix-DMTND
	18 Jan 2005	All	Changed DDF to no longer have SyncML in the name
	25 Jan 2005	B.1, B.2, D.1	Incorporated CR OMA-DM-2005-0042-TND-Appendix-Changes
Draft Versions OMA-TS-DM-TND-V1_2	31 Jan 2005	All	Changed filenames to include -TS
	17 Mar 2005	All A.2 7.2, B.1 7.1	Template updated to 20050101 version Added version history for update from Jan 25 th . Corrected 11 Aug and 31 Jan history Incorporated CRs: OMA-DM-2005-0094R01-LATE-Make-Size-Property-Optional OMA-DM-2005-0097-CR-DM-TND-Type-Value-Format

Document Identifier	Date	Sections	Description
	30 Mar 2005	5, 7.3, 7.7.7.2 9.4.2.7	Incorporated CRs: OMA-DM-2005-0124-CR-TND-DMAcc OMA-DM-2005-0125-CR-TND-Type
	18 Apr 2005	6.2, 7.7, 9.4	Applied CR 2005-0134R02, 2005-0171 and 2005-0183.
	03 May 2005	Filename Title page References 2.1, 6.2.2	Changed version from 1.2.0 to 1.2 Updated AMT references
Candidate Versions OMA-TS-DM-TND-V1_2	07 Jun 2005	n/a	Candidate version approved by TP R&A OMA-TP-2005-0137R01-DM-V1_2-for-Candidate-approval

Appendix B. Static Conformance Requirements (Normative)

The notation used in this appendix is specified in [IOPPROC].

B.1 SCR for DM Client

Item	Function	Reference	Status	Requirement
DMTND-Prop-C-001	Support for the ACL property	7.2	M	
DMTND-Prop-C-002	Support for the Format property	7.2	M	
DMTND-Prop-C-003	Support for the Name property	7.2	M	
DMTND-Prop-C-004	Support for the Size property in leaf nodes	7.2	O	
DMTND-Prop-C-005	No support for the Size property in interior nodes	7.2	M	
DMTND-Prop-C-006	Support for the Title property	7.2	O	
DMTND-Prop-C-007	Support for the TStamp property	7.2	O	
DMTND-Prop-C-008	Support for the Type property	7.2	M	
DMTND-Prop-C-009	Support for the VerNo property	7.2	O	
DMTND-Prop-C-010	Support Get?list=Struct	8.1	O	
DMTND-Prop-C-011	Support Get?list=StructData	8.1	O	
DMTND-Prop-C-012	Support Get?list=TNDS	8.1	O	

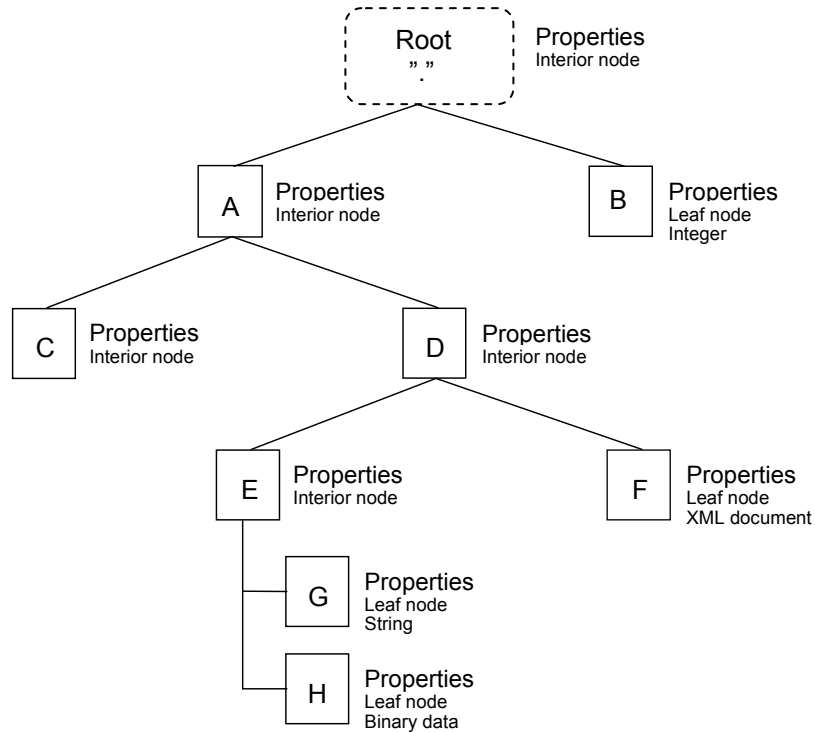
B.2 SCR for DM Server

Item	Function	Reference	Status	Requirement
DMTND-Prop-S-001	Support for the ACL property	7.2	M	
DMTND-Prop-S-002	Support for the Format property	7.2	M	
DMTND-Prop-S-003	Support for the Name property	7.2	M	
DMTND-Prop-S-004	Support for the Size property in leaf nodes	7.2	M	
DMTND-Prop-S-005	No support for the Size property in interior nodes	7.2	M	
DMTND-Prop-S-006	Support for the Title property	7.2	M	
DMTND-Prop-S-007	Support for the TStamp property	7.2	M	
DMTND-Prop-S-008	Support for the Type property	7.2	M	
DMTND-Prop-S-009	Support for the VerNo property	7.2	M	
DMTND-Prop-S-010	Support Get?list=Struct	8.1	O	
DMTND-Prop-S-011	Support Get?list=StructData	8.1	O	
DMTND-Prop-S-012	Support Get?list=TNDS	8.1	O	

Appendix C. Tree Exchange Examples

(Informative)

In the examples below the DM client has a following management tree.



C.1 Example of a Get with Attribute Struct

In the example below DM server requests a management tree structure from a client.

```

<Get>
  <CmdID>4</CmdID>
  <Item>
    <Target>
      <LocURI>./A?list=Struct</LocURI>
    </Target>
  </Item>
</Get>
  
```

Client response using `Result` and multiple `Item` elements.

```

<Results>
  <CmdRef>4</CmdRef>
  <CmdID>7</CmdID>
  <Item>
    <Meta>
      <Format xmlns="syncml:metinf">node</Format>
    </Meta>
    <Source>
      <LocURI>./A</LocURI>
    </Source>
  </Item>
  
```

```

</Item>
<Item>
  <Meta>
    <Format xmlns="syncml:metinf">node</Format>
  </Meta>
  <Source>
    <LocURI>./A/C</LocURI>
  </Source>
</Item>
<Item>
  <Meta>
    <Format xmlns="syncml:metinf">node</Format>
  </Meta>
  <Source>
    <LocURI>./A/D</LocURI>
  </Source>
</Item>
<Item>
  <Meta>
    <Format xmlns="syncml:metinf">node</Format>
  </Meta>
  <Source>
    <LocURI>./A/D/E</LocURI>
  </Source>
</Item>
<Item>
  <Meta>
    <Format xmlns="syncml:metinf">xml</Format>
  </Meta>
  <Source>
    <LocURI>./A/D/F</LocURI>
  </Source>
</Item>
<Item>
  <Source>
    <LocURI>./A/D/E/G</LocURI>
  </Source>
</Item>
<Item>
  <Meta>
    <Format xmlns="syncml:metinf">b64</Format>
  </Meta>
  <Source>
    <LocURI>./A/D/E/H</LocURI>
  </Source>
</Item>
</Results>

```

C.2 Example of a Get with Attribute StructData

In the example below DM server requests a management tree structure as well as the data from a client.

```

<Get>
  <CmdID>4</CmdID>
  <Item>
    <Target>
      <LocURI>./A/D?list=StructData</LocURI>
    </Target>

```

```
</Item>
</Get>
```

Client response using Result and multiple Item elements.

```
<Results>
  <CmdRef>4</CmdRef>
  <CmdID>7</CmdID>
  <Item>
    <Meta>
      <Format xmlns="syncml:metinf">node</Format>
    </Meta>
    <Source>
      <LocURI>./A/D</LocURI>
    </Source>
  </Item>
  <Item>
    <Meta>
      <Format xmlns="syncml:metinf">node</Format>
    </Meta>
    <Source>
      <LocURI>./A/D/E</LocURI>
    </Source>
  </Item>
  <Item>
    <Meta>
      <Format xmlns="syncml:metinf">xml</Format>
    </Meta>
    <Source>
      <LocURI>./A/D/F</LocURI>
    </Source>
    <Data>"XML document"</Data>
  </Item>
  <Item>
    <Source>
      <LocURI>./A/D/E/G</LocURI>
    </Source>
    <Data>leaf node data</Data>
  </Item>
  <Item>
    <Meta>
      <Format xmlns="syncml:metinf">b64</Format>
      <Type xmlns='syncml:metinf'>image/jpeg</Type>
    </Meta>
    <Source>
      <LocURI>./A/D/E/H</LocURI>
    </Source>
    <Data>JSCNMDTUVWXYZcuokcdghfidjssatu</Data>
  </Item>
</Results>
```

Appendix D. Type definitions

(Normative)

D.1 MIME Media Type Definition

MIME Type	Description
application/vnd.syncml.dmddf+xml	XML encoded DDF document complying to this specification
application/vnd.syncml.dmddf+wbxml	WBXML encoded DDF document complying to this specification