



Diagnostics and Monitoring Management Object

Candidate Version 1.0 – 14 Apr 2009

Open Mobile Alliance
OMA-TS-DiagMonMO-V1_0-20090414-C

Use of this document is subject to all of the terms and conditions of the Use Agreement located at <http://www.openmobilealliance.org/UseAgreement.html>.

Unless this document is clearly designated as an approved specification, this document is a work in process, is not an approved Open Mobile Alliance™ specification, and is subject to revision or removal without notice.

You may use this document or any part of the document for internal or educational purposes only, provided you do not modify, edit or take out of context the information in this document in any manner. Information contained in this document may be used, at your sole risk, for any purposes. You may not use this document in any other manner without the prior written permission of the Open Mobile Alliance. The Open Mobile Alliance authorizes you to copy this document, provided that you retain all copyright and other proprietary notices contained in the original materials on any copies of the materials and that you comply strictly with these terms. This copyright permission does not constitute an endorsement of the products or services. The Open Mobile Alliance assumes no responsibility for errors or omissions in this document.

Each Open Mobile Alliance member has agreed to use reasonable endeavors to inform the Open Mobile Alliance in a timely manner of Essential IPR as it becomes aware that the Essential IPR is related to the prepared or published specification. However, the members do not have an obligation to conduct IPR searches. The declared Essential IPR is publicly available to members and non-members of the Open Mobile Alliance and may be found on the “OMA IPR Declarations” list at <http://www.openmobilealliance.org/ipr.html>. The Open Mobile Alliance has not conducted an independent IPR review of this document and the information contained herein, and makes no representations or warranties regarding third party IPR, including without limitation patents, copyrights or trade secret rights. This document may contain inventions for which you must obtain licenses from third parties before making, using or selling the inventions. Defined terms above are set forth in the schedule to the Open Mobile Alliance Application Form.

NO REPRESENTATIONS OR WARRANTIES (WHETHER EXPRESS OR IMPLIED) ARE MADE BY THE OPEN MOBILE ALLIANCE OR ANY OPEN MOBILE ALLIANCE MEMBER OR ITS AFFILIATES REGARDING ANY OF THE IPR'S REPRESENTED ON THE “OMA IPR DECLARATIONS” LIST, INCLUDING, BUT NOT LIMITED TO THE ACCURACY, COMPLETENESS, VALIDITY OR RELEVANCE OF THE INFORMATION OR WHETHER OR NOT SUCH RIGHTS ARE ESSENTIAL OR NON-ESSENTIAL.

THE OPEN MOBILE ALLIANCE IS NOT LIABLE FOR AND HEREBY DISCLAIMS ANY DIRECT, INDIRECT, PUNITIVE, SPECIAL, INCIDENTAL, CONSEQUENTIAL, OR EXEMPLARY DAMAGES ARISING OUT OF OR IN CONNECTION WITH THE USE OF DOCUMENTS AND THE INFORMATION CONTAINED IN THE DOCUMENTS.

© 2009 Open Mobile Alliance Ltd. All Rights Reserved.

Used with the permission of the Open Mobile Alliance Ltd. under the terms set forth above.

Contents

- 1. SCOPE.....4
- 2. REFERENCES5
 - 2.1 NORMATIVE REFERENCES5
 - 2.2 INFORMATIVE REFERENCES5
- 3. TERMINOLOGY AND CONVENTIONS.....6
 - 3.1 CONVENTIONS6
 - 3.2 DEFINITIONS.....6
 - 3.3 ABBREVIATIONS6
- 4. INTRODUCTION7
- 5. THE DIAGMON FRAMEWORK8
 - 5.1 DIAGMONMO8
 - 5.2 DIAGNOSTICS AND MONITORING MANAGEMENT OBJECT.....8
 - 5.3 FIGURE OF THE MANAGEMENT OBJECT (INFORMATIVE)9
 - 5.4 DIAGNOSTICS AND MONITORING MANAGEMENT OBJECT PARAMETERS9
- 6. INVOCATION AND REPORTING BEHAVIOR.....14
 - 6.1 INVOKING DIAGNOSTIC FUNCTIONS14
 - 6.2 RESULT REPORTING14
 - 6.2.1 Explicitly Invoked Functions14
 - 6.2.2 Continuously Available Functions.....15
 - 6.3 PROPOSED ALERT TYPE15
 - 6.4 RESULT CODES.....16
- APPENDIX A. CHANGE HISTORY (INFORMATIVE).....17
 - A.1 APPROVED VERSION HISTORY17
 - A.2 DRAFT/CANDIDATE VERSION 1.0 HISTORY17
- APPENDIX B. STATIC CONFORMANCE REQUIREMENTS (NORMATIVE).....19
 - B.1 SCR FOR DIAGMON TREE STRUCTURE.....19
 - B.2 SCR FOR DIAGMON CLIENT19
 - B.3 SCR FOR DIAGMON SYSTEM19
- APPENDIX C. BEST PRACTICES FOR DEFINING DIAGMON FUNCTIONS (INFORMATIVE).....21

Figures

- Figure 1: Diagnostics and Monitoring Management Object.....9

Tables

- Table 1 - DiagMon Result Codes16

1. Scope

This document describes DiagMonMO employed in Diagnostics and Monitoring management that builds on and leverages the OMA DM v1.2 protocol [DMPRO]. It provides standard DM Management Objects and associated client-side and server-side behaviour necessary to conduct Diagnostics and Monitoring activities on mobile devices.

The DiagMonMO defined in this specification will provide the Diagnostics and Monitoring System with a generic framework and interface to the device functions that perform different Diagnostics and Monitoring activities. These functions are not specified in this enabler release.

2. References

2.1 Normative References

- [DMPRO] “OMA Device Management Protocol, Version 1.2”. Open Mobile Alliance™. OMA-TS-DM-Protocol-V1_2, URL: <http://www.openmobilealliance.org>
- [DMREPRO] “OMA Device Management Representation Protocol, Version 1.2”. Open Mobile Alliance™. OMA-TS-DM-Protocol-V1_2. URL: <http://www.openmobilealliance.org>
- [IOPPROC] “OMA Interoperability Policy and Process”, Version 1.1, Open Mobile Alliance™, OMA-IOP-Process-V1_1, URL: <http://www.openmobilealliance.org/>
- [RFC2119] “Key words for use in RFCs to Indicate Requirement Levels”, S. Bradner, March 1997, URL: <http://www.ietf.org/rfc/rfc2119.txt>
- [RFC4234] “Augmented BNF for Syntax Specifications: ABNF”. D. Crocker, Ed., P. Overell. October 2005, URL: <http://www.ietf.org/rfc/rfc4234.txt>

2.2 Informative References

- [ACMO] “White Paper on Provisioning Objects”, Open Mobile Alliance™, OMA-WP-AC_MO URL: <http://www.openmobilealliance.org>
- [DMSTDOBJ] “OMA Device Management Standardized Objects, Version 1.2”. Open Mobile Alliance™. OMA-TS-DM-StdObj-V1_2. URL: <http://www.openmobilealliance.org>
- [RFC2616] “Hypertext Transfer Protocol – HTTP/1.1”. Network Working group. June 1999. URL: <http://www.ietf.org/rfc/rfc2616.txt>
- [RFC3986] “Uniform Resource Identifier (URI): Generic Syntax”. Network Working Group. January 2005. URL: <http://www.ietf.org/rfc/rfc3986.txt>

3. Terminology and Conventions

3.1 Conventions

The key words “MUST”, “MUST NOT”, “REQUIRED”, “SHALL”, “SHALL NOT”, “SHOULD”, “SHOULD NOT”, “RECOMMENDED”, “MAY”, and “OPTIONAL” in this document are to be interpreted as described in [RFC2119].

All sections and appendixes, except “Scope” and “Introduction”, are normative, unless they are explicitly indicated to be informative.

3.2 Definitions

Device Description Framework	A specification for how to describe the management syntax and semantics for a particular device type.
Device Management	Management of the Device configuration and other managed objects of Devices from the point of view of the various Management Authorities. Device Management includes, but is not restricted to setting initial configuration information in Devices, subsequent updates of persistent information in Devices, retrieval of management information from Devices and processing events and alarms generated by Devices.
Device Management Server	A network based entity that issues OMA DM commands to devices and correctly interprets responses sent from the devices.
Diagnostics and Monitoring Function	Functions in a device that can be remotely invoked by a Diagnostics and Monitoring System, that, when invoked, executes a diagnostics related logic to return results
Diagnostics and Monitoring System	A system that is associated with the Device Management System and is also under the administration of a management authority. It employs the standard Device Management System interaction with a (set of) device(s). The Diagnostics and Monitoring System provides enhancements to the Device Management System to support Diagnostics and Monitoring.
Interior Node	A node that may have child nodes, but cannot store any value. The Format property of an interior node is node.
Leaf Node	A node that can store a value, but cannot have child nodes. The Format property of a leaf node is not node.
Management Tree	The mechanism by which the management client interacts with the device, e.g. by storing and retrieving values from it and by manipulating the properties of it, for example the access control lists.
Management Object	A MO is the data model for information which is a logical part of the interfaces exposed by DM components
Node	A node is a single element in a management tree. There can be two kinds of nodes in a management tree: interior nodes and leaf nodes. The Format property of a node provides information about whether a node is a leaf or an interior node.

3.3 Abbreviations

DDF	Device Description Framework
DFID	Diagnostic Function Identifier
DiagMonMO	Diagnostics and Monitoring MO
DM	Device Management
MO	Management Object
OMA	Open Mobile Alliance
URI	Uniform Resource Identifier
URL	Uniform Resource Locator

4. Introduction

The Diagnostics and Monitoring (DiagMon) Functions perform various Diagnostics and Monitoring activities in order to diagnose problems, report data, or collect measurements data associated with a device, with applications on the device, with the network in which the device operates or with access to services provided by the network.

The purpose of the DiagMonMO is to provide a generic framework and interface for different Diagnostics and Monitoring Functions so that they can be managed in a consistent manner by using the same description framework. The specific Diagnostics and Monitoring functions will not be defined in this specification.

5. The DiagMon Framework

The generic management interface for Diagnostics and Monitoring Functions can be broadly divided into two parts: the DiagMon Management Objects and the Alert message. Through this interface a server can configure or invoke the functions behind it, and retrieve results of Diagnostics or monitored information. Note that this interface framework does not present any specific function. Instead, it is intended to be used to define a wide range of DiagMon functions. For this purpose, the Diagnostics and Monitoring Function ID (DFID) is used to identify the function represented by this interface. With this identifier, the server is able to get further information of the function.

In addition, this generic management interface is designed to cover different processing types of various functions – synchronous, asynchronous or always running - and also to allow multiple instantiation of the same function. In case of multiple instantiation, separate management objects need to be created for each instantiation. And each instantiation can be distinguished by the URIs of the management objects.

As explained above, this generic management interface provides a common template that can be reused among a wide range of functions, whilst allowing flexible extensions (or customization) for different functions.

5.1 DiagMonMO

A Diagnostics and Monitoring function is resident on the device. The DiagMonMO makes this function remotely callable by the Diagnostics and Monitoring System. The DiagMonMO is used as the means to expose the Diagnostic and Monitoring function to the Diagnostics and Monitoring System. The DiagMonMO will provide the following management capabilities and diagnostics and monitoring operations.

- Invoke the Diagnostics and Monitoring functions
- Stop the Diagnostics and Monitoring functions
- Configure the Diagnostics and Monitoring functions for reporting, execution, etc.
- Retrieves the Diagnostics and Monitoring data or the results
- Notifications using the Generic Alert

5.2 Diagnostics and Monitoring Management Object

The management objects associated with Diagnostics and Monitoring management are assembled under an internal node *x* (dynamically or statically created).

Management Object identifier: urn:oma:mo:oma-diagmon:1.0

Protocol Compatibility: This object is compatible with OMA Device Management protocol specifications, version 1.2 [DMPRO].

5.3 Figure of the Management Object (Informative)

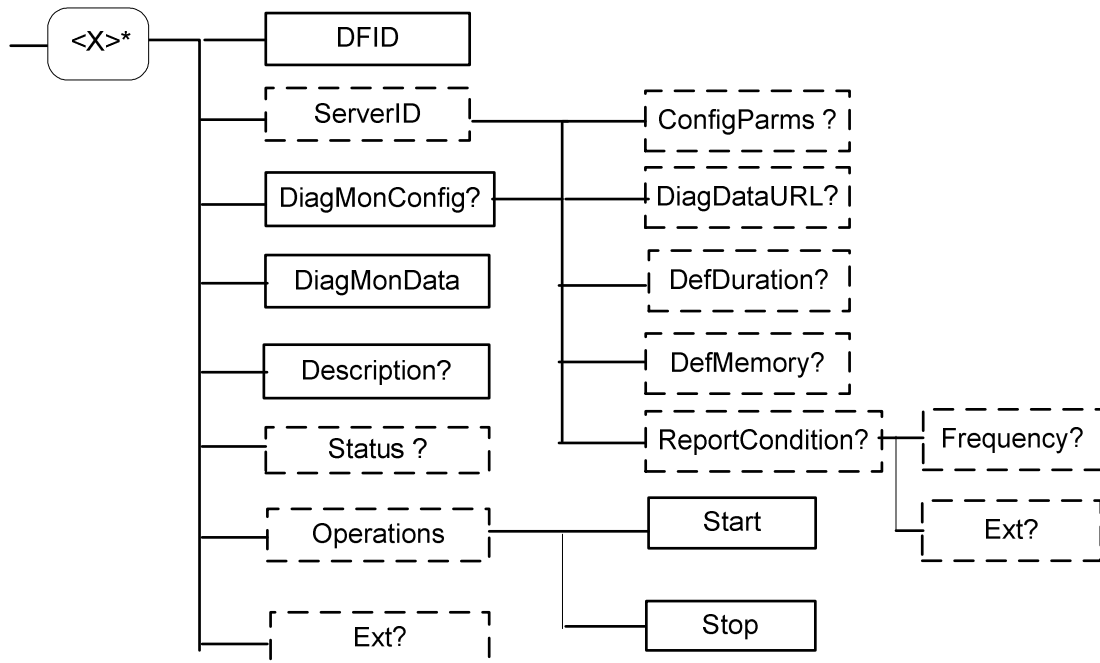


Figure 1: Diagnostics and Monitoring Management Object

5.4 Diagnostics and Monitoring Management Object Parameters

This section describes the properties for DiagMonMO.

<X>

Status	Tree Occurrence	Format	Min. Access Types
Required	ZeroOrMore	node	Get

This interior node groups together the parameters of the DiagMon MO. The ancestor elements of this node define the position in the DM tree of this MO.

<x>/DFID

Status	Tree Occurrence	Format	Min. Access Types
Required	One	chr	Get

DFID leaf node is used to contain a unique identifier that identifies the Diagnostics and Monitoring function. The value of the leaf node MUST be a unique registered identifier. The DFIDs and how the identifiers are registered will not be specified in this specification.

<x>/ServerID

Status	Tree Occurrence	Format	Min. Access Types
Optional	ZeroOrOne	chr	Get

The ServerID leaf node is used to identify the DiagMon server where the alert and collected Diagnostics and Monitoring data SHALL be sent if the node is present.

Values
Leaf values are in URI format [RFC3986]

<x>/Description

Status	Tree Occurrence	Format	Min. Access Types
Optional	ZeroOrOne	chr	Get

This optional leaf node provides a description of the Diagnostics and Monitoring function.

<x>/DiagMonConfig

Status	Tree Occurrence	Format	Min. Access Types
Optional	ZeroOrOne	node	Get

This interior node is a placeholder for the Diagnostics and Monitoring configuration information. Some of the supported sub-nodes of this node (as per the device DDF) MAY be invalid for specific DiagMon Functions.

<x>/DiagMonConfig/ConfigParms

Status	Tree Occurrence	Format	Min. Access Types
Optional	One	node	Get

This interior node is a placeholder for one or more parameters related to the Diagnostics and Monitoring function. This node provides additional configuration information (e.g. package which may contain Key Performance Indicators to be recorded) for a given DFID. The content MAY be associated with the specific DFID and is not specified in this specification.

<x>/DiagMonConfig/DiagDataURL

Status	Tree Occurrence	Format	Min. Access Types
Optional	ZeroOrOne	chr	Get

This leaf node contains the URL [RFC3986] of an alternate data server that the client MAY use to deliver the Diagnostics and Monitoring data.

<x>/DiagMonConfig/DefDuration

Status	Tree Occurrence	Format	Min. Access Types
Optional	ZeroOrOne	int	Get

This node specifies the time-limit threshold for running of the Diagnostics and Monitoring functions. When the time-limit threshold is exceeded the DiagMon Client MUST stop the Diagnostics and Monitoring function. This time is expressed in seconds, presented as a 32bit unsigned non-negative integer.

<x>/DiagMonConfig/DefMemory

Status	Tree Occurrence	Format	Min. Access Types
Optional	ZeroOrOne	int	Get

This optional node specifies the Diagnostics and Monitoring memory-size-limit threshold for running the Diagnostics and Monitoring function. When the memory-size-limit is exceeded, the DiagMon Client MUST stop the Diagnostics and Monitoring function. The amount of memory is expressed in bytes, presented as a 32bit unsigned non-negative integer.

<x>/DiagMonConfig/ReportCondition

Status	Tree Occurrence	Format	Min. Access Types
Optional	ZeroOrOne	node	Get

This interior node acts as a placeholder to contain different reporting conditions which indicates when Diagnostics and Monitoring data is reported back to the Diagnostics and Monitoring System via Generic Alert and subsequent Get commands mechanism.

<x>/DiagMonConfig/ReportConfig/Frequency

Status	Tree Occurrence	Format	Min. Access Types
Optional	ZeroOrOne	int	Get

This leaf node contains an integer value indicating the frequency at which alert about Diagnostics and Monitoring data is reported back to the Diagnostics and Monitoring System. The Diagnostics and Monitoring System MAY use Get command on the 'DiagMonData' node to retrieve diagnostics data.

Note: Each diagnostic function will define what the set of diagnostic data is to be collected.

Values	Description
0	The Device SHOULD NOT send generic alert to Diagnostics and Monitoring System when the set of diagnostics data has been completely collected .
1	The Device MUST send generic alert as soon as practical to Diagnostics and Monitoring System when the set of diagnostics data has been completely collected.
any other value greater than 1	The Device MUST send generic alert as soon as practical to Diagnostics and Monitoring System after the n th set of diagnostics data has been completely collected.

<x>/DiagMonConfig/ReportCondition/Ext

Status	Tree Occurrence	Format	Min. Access Types
Optional	ZeroOrOne	node	Get

This interior node allows for the extensions on report configurations.

<x>/DiagMonData

Status	Tree Occurrence	Format	Min. Access Types
Required	One	node	Get

This node identifies the collected Diagnostics and Monitoring data, which SHOULD be retrieved by the Diagnostics and Monitoring System. The collected DiagMon data results as identified by leaf nodes that are attached to this node are created dynamically and have appropriate format properties as per [DMTND]. Devices MUST support adding of leaf nodes under /<x>/DiagMonData. Devices SHOULD support these leaf nodes formatted in xml.

<x>/Operations

Status	Tree Occurrence	Format	Min. Access Types
Optional	One	node	Get

This node is a placeholder for operations that can be executed to start or stop Diagnostics and Monitoring function.

<x>/Operations/Start

Status	Tree Occurrence	Format	Min. Access Types
Required	One	null	Exec

This leaf node is the target of an 'Exec' command to start the Diagnostics and Monitoring function resident on the device. This node is required and MUST be present if the Operations node is supported.

<x>/Operations/Stop

Status	Tree Occurrence	Format	Min. Access Types
Required	ZeroOrOne	null	Exec

This leaf node is the target of an 'Exec' command to stop the Diagnostics and Monitoring function resident on the device. This node is required if the Operations node is supported.

<x>/Status

Status	Tree Occurrence	Format	Min. Access Types
Optional	One	chr	Get

This leaf node specifies the operational state of the Diagnostics and Monitoring function. The value of this node MUST be one of the following , although all values might not be applicable to a specific diagnostic function:

State	Meaning
Stopped	The Diagnostics and Monitoring function is stopped.
Running	The Diagnostics and Monitoring function is running, following explicit invocation.
Continuous	The Diagnostics and Monitoring function is a continuously available function that is always running. Running and Stopped states are not applicable.

<x>/Ext

Status	Tree Occurrence	Format	Min. Access Types
Optional	ZeroOrOne	node	Get

This interior node is a placeholder for platform or vendor specific extensions.

6. Invocation and Reporting Behavior

DiagMon Functions fall into two broad categories: those that are continuously available and those that have to be explicitly invoked. The invocation and reporting behavior of a DiagMon MO depends on which of the two broad categories it falls into.

6.1 Invoking Diagnostic Functions

A DiagMon function that is not continuously available SHALL be invoked by sending an Exec command to the `<x/>Operations/Start` node.

For functions that are continuously available an explicit invocation using the `<x/>Operations` node is not required. The MO definitions for such functions MUST NOT support the `<x/>Operations/Start` node.

6.2 Result Reporting

6.2.1 Explicitly Invoked Functions

Explicitly invoked DiagMon Functions can report their results synchronously or asynchronously, as described in the following sub-sections.

6.2.1.1 Asynchronous Execution (Use of the Generic Alert)

Explicitly invoked DiagMon Functions that execute asynchronously MUST report their results by issuing an alert with type “urn:oma:at:diagmon:1.0:OperationComplete” in the same or new DM session, according to the Generic Alert mechanism defined in section 8.7 of [DMPRO]. The Generic Alert message includes the following data:

- An alert type “urn:oma:at:diagmon:1.0:OperationComplete” – Used to identify the result type of the operation; MUST be included in `<Meta>/<Type>` element.
- The URI of the operation node on which the Exec command was invoked– Used to identify the source. This information MUST be included in the `Source/LocURI` element within the Generic Alert.
- The URI of the DiagMonData node or its child node provides the location at which the output data associated with the DiagMon Function is present. This information MUST be included in the `Target/LocURI` element within the Generic Alert if the Diagnostics and Monitoring function generates DiagMonData. If no DiagMonData is generated then the `Target` element MUST NOT be present within the Generic Alert.
- An integer result code – Used to report result of the invocation of the Diagnostics and Monitoring function, as defined in section 6.4. This information MUST be included in an `Item/Data` element within the Generic Alert.

The Diagnostics and Monitoring System MAY retrieve the collected DiagMon Data by sending a Get command to `DiagMonData` or its child nodes.

The following is an example message:

```
<Alert>
  <CmdID>2</CmdID>
  <Data>1226</Data>    <!-- Alert Code for Generic Alert -->
  <Item>
    <Source>
      <LocURI>./DiagMon/abc/Operations/Start</LocURI>
    </Source>
    <Target>
      <LocURI>./DiagMon/abc/DiagMonData</LocURI>
    </Target>
  </Item>
</Alert>
```

```

    <Type xmlns="syncml:metinf">urn:oma:at:diagmon:1.0:OperationComplete</Type>
    <Format xmlns="syncml:metinf">text/plain</Format>
    <Mark xmlns="syncml:metinf">warning</Mark>
    </Meta>
    <Data>1200</Data>  <!-- DiagMon Result Code -->
  </Item>
</Alert>

```

6.2.1.2 Synchronous Reporting

For explicitly invoked DiagMon functions that execute synchronously, the Diagnostics and Monitoring System MAY retrieve the collected DiagMon Data by sending a Get command to DiagMonData or its child nodes.

If the DiagMon function is executed synchronously by Exec command, the DiagMon Client MUST send result for Exec command as described below:

- The <Data> element MUST contain a valid DiagMon Result Code defined in section 6.4.
- The URI of the operation node on which the Exec command was invoked – Used to identify the source; MUST be included in the <Source>/<LocURI> of <Status>/<Item> element.
- The URI of the DiagMonData node or its child node provides the location at which the output data associated with the DiagMon Function is present. This information MUST be included in the <Target>/<LocURI> of <Status>/<Item> element if the Diagnostics and Monitoring function generates DiagMonData. If no DiagMonData is generated then the Target element MUST NOT be present.

The following is an example message:

```

<Status>
  <MsgRef>1</MsgRef>
  <CmdRef>2</CmdRef>
  <Cmd>Exec</Cmd>
  <Data>1200</Data>  <!--DiagMon Result status Code -->
  <Item>
    <Source>
      <LocURI>./DiagMon/abc/Operations/Start</LocURI>
    </Source>
    <Target>
      <LocURI>./DiagMon/abc/DiagMonData</LocURI>
    </Target>
  </Item>
</Status>

```

These functions SHALL NOT report any results via Generic Alerts.

6.2.2 Continuously Available Functions

For diagnostic function that are continuously available, the Diagnostics and Monitoring System MAY retrieve the DiagMon Data by sending a Get command to DiagMonData or its child nodes. These functions SHALL NOT report any results via Generic Alerts.

6.3 Proposed Alert Type

The following is the Alert Type for the Diagnostics and Monitoring specific Generic Alert to be sent from device to Diagnostics and Monitoring System at the end of the invocation of the Diagnostics and Monitoring functions:

- “urn:oma:at:diagmon:1.0:OperationComplete”

6.4 Result Codes

The Result Code of the DiagMon operation MUST be sent as an integer value in Item/Data element of the Generic Alert [DMPRO] message or in response to an Exec command. The Result Code MUST be one of the values defined below:

Code	Meaning	Usage
1200	Successful	Successful - The Request has Succeeded
1201	Successful – Data Available	Successful – DiagMon Data is available
1240-1249	Successful – Vendor Specified	Successful Operation with Vendor Specified Result Code. Note: this extension applies to DiagMon framework.
1250-1259	Successful - DiagMon Framework Future Releases Specified	Successful Operation. Note: this extension is for future DiagMon framework releases.
1260-1299	Successful - DiagMon Function Specified	Successful Operation. Note: this extension is for DiagMon Function Specified Result Code.
1400	Operation Failed	Operation failed to start or stop Diagnostics and Monitoring function
1401	Not authorized	The server is not authorized to conduct this operation.
1402	Not Implemented	The device does not support the requested operation.
1403	Out of memory	The operation failed due to insufficient memory in the device to execute the Diagnostics and Monitoring function
1404	Storage is Full	The operation failed due to insufficient storage in the recipient device to store events or data for Diagnostics and Monitoring function.
1440-1449	Operation Failed – Vendor Specified	Operation Failure with Vendor Specified Result Code. Note: this extension applies to DiagMon framework.
1450-1459	Operation Failed – DiagMon Framework Future Releases Specified	Operation Failure. Note: this extension is for future DiagMon framework releases.
1460-1499	Operation Failed – DiagMon Function Specified	Operation Failure. Note: this extension is for DiagMon Function Specified Result Code.

Table 1 - DiagMon Result Codes

Appendix A. Change History (Informative)

A.1 Approved Version History

Reference	Date	Description
n/a	n/a	No prior version

A.2 Draft/Candidate Version 1.0 History

Document Identifier	Date	Sections	Description
Draft Versions OMA-TS-DiagMonMO-V1_0	26 Mar 2006	All	For discussion of Baseline document
	12 Jun 2006	All	Draft to be proposed as baseline
	11 Nov 2006	6	Accommodated agreed CRs 43R01 & 49R02
	27 Feb 2007	6.4	Accommodated agreed CR 2007-0008
		5	Accommodated agreed CR 2007-0003R01
	12 Mar 2007	5	agreed CR 2007-004R03
	01 May 2007	5	Accommodated agreed CR 2007-0013R03 and 2007-0019R02
	20 Jun 2007	All	Accommodated agreed CR 2007-0021R01 and 2007-0024
	02 Oct 2007	All	Accommodated agreed CR 2007-0045 & 46
	02 Nov 2007	All	Accommodated agreed CR 2007-0048 & 49
	28 Dec 2007	5	Accommodated agreed CR 2007-0052
	05 Mar 2008	5	Accommodated agreed CR 2007-0053R02
	26 Jun 2008	All	Accommodated agreed CR 2008-0004R02, 0005, 0011R01, 0014R01, 0018R01, 0019
	30 Aug 2008	5.4, 6.1	Accommodated agreed CR 2008-0025, 0040R01, editorial changes
	1 Sep 2008	5.1, 6.*	OMA-DM-Diag-2008-0026R02
	17 Sep 2008	2.2	OMA-DM-Diag-2008-0032R01
		6	OMA-DM-Diag-2008-0045R02
		6.*	OMA-DM-Diag-2008-0047
	Appendix B		OMA-DM-Diag-2008-0049
		Appendix C	Editorial changes
11 Oct 2008	5.4.15	OMA-DM-Diag-2008-0027R01	
15 Oct 2008	5.4.*	Editorial changes (to support automatic generation of DDF and diagram)	
22 Oct 2008	5.4	OMA-DM-Diag-2008-0059	
	6.2.1.1	Editorial changes	
	6.3	OMA-DM-Diag-2008-0062	
01 Dec 2008	5.4	OMA-DM-Diag-2008-0071R01 Editorial changes	

Document Identifier	Date	Sections	Description
	03 Mar 2009	- 4, 5.3 6 6.2.1.1, 6.3 5.3, 5.4 5.3, 5.4 6.2.1.1, 6.3 - - - - - - - - 6.4 6.2, 6.3	Incorporated agreed CRs: OMA-DM-Diag-2008-57R01 OMA-DM-Diag-2008-0061R03 OMA-DM-Diag-2008-0062 OMA-DM-Diag-2009-0003 OMA-DM-Diag-2009-0004 OMA-DM-Diag-2009-0018R01 Editorial changes: 1. Document language set to English 2. Spelling errors were fixed 3. Some texts were corrected to use Times New Roman font 4. Table of Contents, List of Figures and List of Tables were updated 5. Headers and footers were updated - document name and dates 6. This table (A.2) was updated – all document identifiers were incorrect 7. Changed ‘fails’ to ‘failed’ in all result codes descriptions 8. Alert type was fixed from: “urn:oma:mo:diagmon:1.0:OperationComplete” to: “urn:oma:at:diagmon:1.0:OperationComplete”
	12 Mar 2009	5 6.4 A.2	Incorporated agreed CRs: OMA-DM-Diag-2009-0002R04 OMA-DM-Diag-2009-0016R02 Clerical changes
	18 Mar 2009	All	Editorial Cleanup
	Draft Versions OMA-TS-DiagMonMO-V1_0	14 Apr 2009	n/a

Appendix B. Static Conformance Requirements (Normative)

The notation used in this appendix is specified in [IOPPROC].

B.1 SCR for DiagMon Tree Structure

Item	Function	Reference	Requirement
DIAG-T-001-M	Use of appropriate Management Object identifier for the DiagMon node	Section 5.2	
DIAG-T-002-M	Support for Required nodes under root node	Section 5.3	
DIAG-T-003-O	Support for Optional nodes	Section 5.3	
DIAG-T-004-M	Support for Required nodes under an Optional node if the Optional node is supported	Section 5.3	

B.2 SCR for DiagMon Client

Item	Function	Reference	Requirement
DIAG-C-001-M	DM Client allows Diagnostics and Monitoring System to invoke diagnostic functions via DiagMon MO	Section 5	
DIAG-C-002-O	DiagMon Functions are executed asynchronously to Diagnostics and Monitoring System using Generic Alert	Section 6.2.1	
DIAG-C-003-O	Synchronous execution of DiagMon Functions by receiving a subsequent Get command by the server which returns results available	Section 6.2.1.2	
DIAG-C-004-M	Alert Type provides information on MO	Section 6.3	

B.3 SCR for DiagMon System

Item	Function	Reference	Requirement
DIAG-S-001-M	Support for the DiagMon Management Object	Section 5.4	

DIAG-S-002-M	Diagnostics and Monitoring System can invoke DiagMon Functions via DiagMon MO	Section 6.2.1	
DIAG-S-003-O	DiagMon Functions are executed asynchronously by Diagnostics and Monitoring System using Generic Alert	Section 6.2.1	
DIAG-S-004-O	Server sends a Get command to retrieve collected DiagMon data	Section 6.2.1.2	
DIAG-S-005-M	Alert Type is received that provides information on MO	Section 6.3	

Appendix C. Best Practices for defining DiagMon Functions (Informative)

DiagMon Functions are essentially MOs, and therefore all the best practices for defining MOs, as documented in [ACMO], apply to them as well. There are also some additional best practices that apply to DiagMon Functions.

The following is a list of best practices to be followed for documenting DiagMon Functions. These best practices are also applicable to external Standards Developing Organizations (SDOs) that may define their own DiagMon Functions.

1. Identify the broad category and the subcategory, under the broad category, into which the DiagMon Function falls. If the DiagMon Function does not fall into one of the existing categories, create a new one.
2. Create a new subsection for the DiagMon function under the section pertaining to its subcategory. Let us assume this section is Section *x*.
3. Under Section *x* create the following subsections:

x.1 Introduction

This subsection provides a brief description of the DiagMon Function and highlights its salient features.

x.2 DFID

This subsection provides the DFID of the DiagMon Function.

x.3 Non-applicable nodes from DiagMon MO definition

This subsection lists the nodes from the DiagMon MO definition that do not apply to the DiagMon function, if any.

For DiagMon Functions that are continuously available, the following nodes generally do not apply:

- ServerID
- DiagMonConfig
- Operations

For explicitly invoked DiagMon Functions that do not report their results asynchronously, the following node generally does not apply:

- ServerID

x.4 Function Description

This subsection includes a figure that gives the complete structure of the DiagMon Function, preferably in the enhanced graphical notation, as described in [ACMO]. A description of the various nodes in the MO definition is also included, as per [ACMO] guidelines. However, nodes that are not different from the DiagMon framework description are not described in this section.

x.5 Additional Information

This optional subsection provides any additional information that is specific to the DiagMon Function.

Note: If the DiagMon Function is defined by an external SDO, only subsection x.1 should be present. In that case, subsection x.1 should only provide a reference to the pertinent document that describes the DiagMon Function.