



Enabler Validation Plan for Social Network Web

Candidate Version 1.0 – 17 Sep 2013

Open Mobile Alliance
OMA-EVP-SNeW-V1_0-20130917-C

Use of this document is subject to all of the terms and conditions of the Use Agreement located at <http://www.openmobilealliance.org/UseAgreement.html>.

Unless this document is clearly designated as an approved specification, this document is a work in process, is not an approved Open Mobile Alliance™ specification, and is subject to revision or removal without notice.

You may use this document or any part of the document for internal or educational purposes only, provided you do not modify, edit or take out of context the information in this document in any manner. Information contained in this document may be used, at your sole risk, for any purposes. You may not use this document in any other manner without the prior written permission of the Open Mobile Alliance. The Open Mobile Alliance authorizes you to copy this document, provided that you retain all copyright and other proprietary notices contained in the original materials on any copies of the materials and that you comply strictly with these terms. This copyright permission does not constitute an endorsement of the products or services. The Open Mobile Alliance assumes no responsibility for errors or omissions in this document.

Each Open Mobile Alliance member has agreed to use reasonable endeavors to inform the Open Mobile Alliance in a timely manner of Essential IPR as it becomes aware that the Essential IPR is related to the prepared or published specification. However, the members do not have an obligation to conduct IPR searches. The declared Essential IPR is publicly available to members and non-members of the Open Mobile Alliance and may be found on the “OMA IPR Declarations” list at <http://www.openmobilealliance.org/ipr.html>. The Open Mobile Alliance has not conducted an independent IPR review of this document and the information contained herein, and makes no representations or warranties regarding third party IPR, including without limitation patents, copyrights or trade secret rights. This document may contain inventions for which you must obtain licenses from third parties before making, using or selling the inventions. Defined terms above are set forth in the schedule to the Open Mobile Alliance Application Form.

NO REPRESENTATIONS OR WARRANTIES (WHETHER EXPRESS OR IMPLIED) ARE MADE BY THE OPEN MOBILE ALLIANCE OR ANY OPEN MOBILE ALLIANCE MEMBER OR ITS AFFILIATES REGARDING ANY OF THE IPR'S REPRESENTED ON THE “OMA IPR DECLARATIONS” LIST, INCLUDING, BUT NOT LIMITED TO THE ACCURACY, COMPLETENESS, VALIDITY OR RELEVANCE OF THE INFORMATION OR WHETHER OR NOT SUCH RIGHTS ARE ESSENTIAL OR NON-ESSENTIAL.

THE OPEN MOBILE ALLIANCE IS NOT LIABLE FOR AND HEREBY DISCLAIMS ANY DIRECT, INDIRECT, PUNITIVE, SPECIAL, INCIDENTAL, CONSEQUENTIAL, OR EXEMPLARY DAMAGES ARISING OUT OF OR IN CONNECTION WITH THE USE OF DOCUMENTS AND THE INFORMATION CONTAINED IN THE DOCUMENTS.

© 2013 Open Mobile Alliance Ltd. All Rights Reserved.

Used with the permission of the Open Mobile Alliance Ltd. under the terms set forth above.

Contents

- 1. SCOPE5
 - 1.1 ASSUMPTIONS.....5
 - 1.2 EXCLUSIONS5
- 2. REFERENCES6
 - 2.1 NORMATIVE REFERENCES.....6
 - 2.2 INFORMATIVE REFERENCES.....6
- 3. TERMINOLOGY AND CONVENTIONS7
 - 3.1 CONVENTIONS7
 - 3.2 DEFINITIONS.....7
 - 3.3 ABBREVIATIONS7
- 4. ENABLER VALIDATION DESCRIPTION.....8
- 5. TESTFEST ACTIVITIES.....9
 - 5.1 ENABLER TEST GUIDELINES.....9
 - 5.1.1 Minimal Test Configuration.....9
 - 5.1.2 Minimal Participation Guidelines9
 - 5.1.3 Optimal TestFest Achievement Test Case Priority Guidelines10
 - 5.2 ENABLER TEST REQUIREMENTS11
 - 5.2.1 Test Infrastructure Requirements11
 - 5.2.2 Enabler Execution Flow11
 - 5.2.3 Test Content Requirements12
 - 5.2.4 Test Limitations12
 - 5.2.5 Test Restrictions.....12
 - 5.2.6 Test Tools12
 - 5.2.7 Resources Required12
 - 5.3 TESTS TO BE PERFORMED.....12
 - 5.3.1 Entry Criteria for TestFest12
 - 5.3.2 Testing to be Performed at TestFest.....13
 - 5.4 ENABLER TEST REPORTING13
 - 5.4.1 Problem Reporting Requirements13
 - 5.4.2 Enabler Test Requirements13
- 6. ALTERNATIVE VALIDATION ACTIVITIES14
- 7. APPROVAL CRITERIA15
 - 7.1 ENABLER VALIDATION TEST CASES15
 - 7.2 NON-COVERED ETR REQUIREMENTS15
- APPENDIX A. CHANGE HISTORY (INFORMATIVE).....17
 - A.1 APPROVED VERSION HISTORY17
 - A.2 DRAFT/CANDIDATE VERSION 1.0 HISTORY17

Figures

- Figure 1: Example flow of cross domain subscription.....11

Tables

- Table 1: Listing of Tests for Entry Criteria for TestFest13
- Table 2: Enabler Validation Test Cases.....15

Table 3: Non-Covered ETR Requirements16

1. Scope

This document details the Validation plan for the Social Network Web Enabler Release. The successful accomplishment of the validation activities will be required for the Enabler to be considered for Approved status.

The validation plan for the Social Network Web Enabler Release specifications is based on testing expectations in the Enabler Test Requirements (ETR). While the specific test activities to be performed are described in the Enabler Test Specification (ETS) the test environment is described in this plan. This test environment details infrastructure, operational and participation requirements identified for the needed testing activities.

1.1 Assumptions

None.

1.2 Exclusions

None.

2. References

2.1 Normative References

- [IOPPROC] “OMA Interoperability Policy and Process”, Version 1.12, Open Mobile Alliance™, OMA-ORG-IOP_Process-V1_12, [URL:http://www.openmobilealliance.org/](http://www.openmobilealliance.org/)
- [RFC2119] “Key words for use in RFCs to Indicate Requirement Levels”, S. Bradner, March 1997, [URL:http://www.ietf.org/rfc/rfc2119.txt](http://www.ietf.org/rfc/rfc2119.txt)
- [SNeW-ER] “Social Network Web Combined Enabler Release”, Open Mobile Alliance™, OMA-ER-SNeW-V1_0, [URL:http://www.openmobilealliance.org/](http://www.openmobilealliance.org/)
- [SNeW-ETR] “Enabler Test Requirements for Social Network Web”, Open Mobile Alliance™, OMA-ETR-SNeW-V1_0, [URL:http://www.openmobilealliance.org/](http://www.openmobilealliance.org/)
- [SNeW-ETS] “Enabler Test Specification for Social Network Web”, OMA-ETS-SNeW-V1_0-20130917-C, Open Mobile Alliance™, [URL:http://www.openmobilealliance.org/](http://www.openmobilealliance.org/)

2.2 Informative References

- [OMADICT] “Dictionary for OMA Specifications”, Version 2.9, Open Mobile Alliance™, OMA-ORG-Dictionary-V2_9, [URL:http://www.openmobilealliance.org/](http://www.openmobilealliance.org/)

3. Terminology and Conventions

3.1 Conventions

The key words “MUST”, “MUST NOT”, “REQUIRED”, “SHALL”, “SHALL NOT”, “SHOULD”, “SHOULD NOT”, “RECOMMENDED”, “MAY”, and “OPTIONAL” in this document are to be interpreted as described in [RFC2119].

All sections and appendixes, except “Scope”, are normative, unless they are explicitly indicated to be informative.

3.2 Definitions

SNeW Social Network Web

3.3 Abbreviations

OMA Open Mobile Alliance

4. Enabler Validation Description

The validation of this enabler will be made by the successful execution of test cases defined on the [SNeW-ETS] and that satisfy the agreed test requirements listed in [SNeW-ETR].

A summary of test results will be the evidence that those test cases were executed. The lack of open Problem Reports will be the evidence the test cases were successful executed and that any issue found whether on test specifications, technical specifications or other was correctly addressed.

More details can be found later in this document below.

5. TestFest Activities

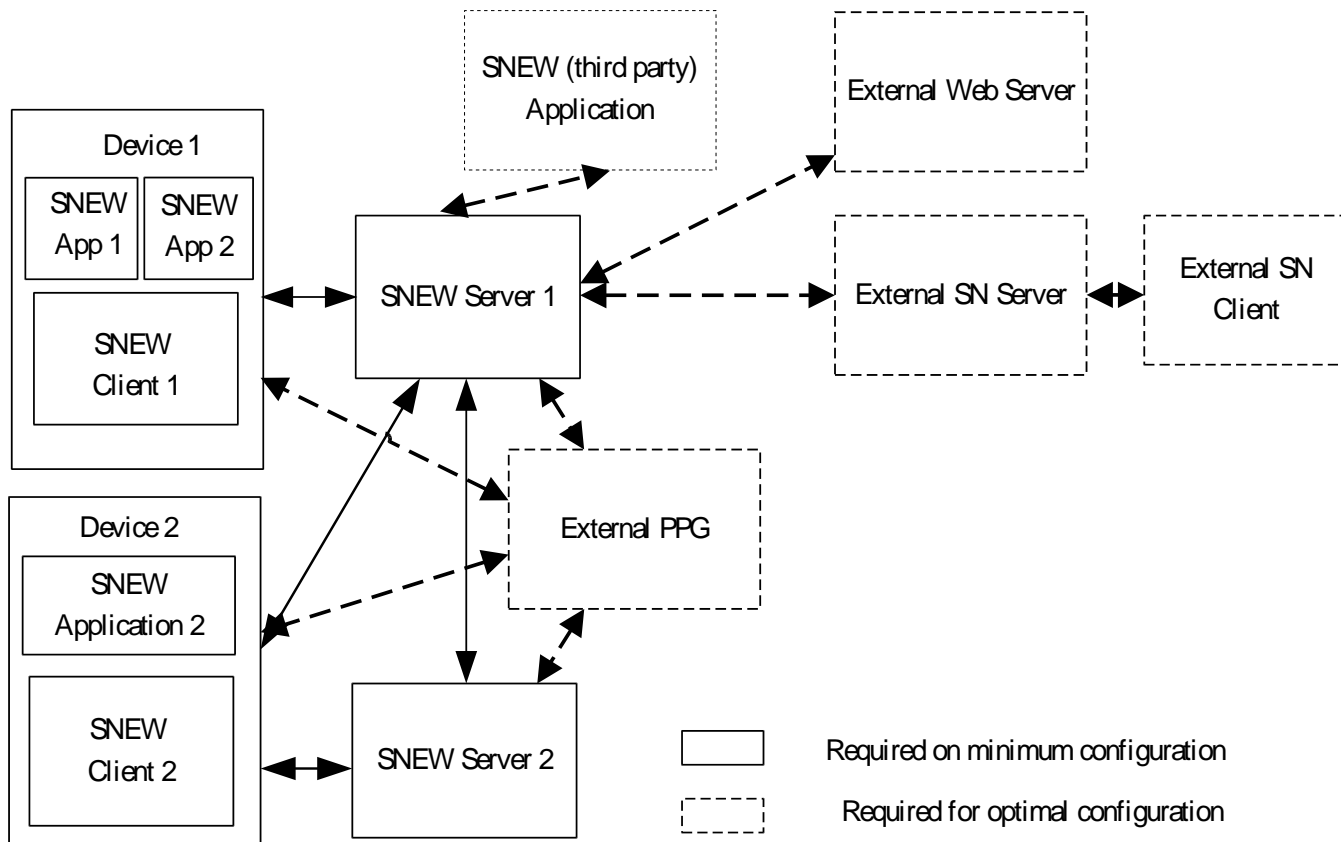
5.1 Enabler Test Guidelines

5.1.1 Minimal Test Configuration

To execute all the test cases from [SNeW-ETS] the minimal test configuration required is:

- 2 SNeW Clients;
- 2 SNeW Servers;
- 1 External Web Server;
- 1 External PPG;
- 2 SNeW (Device) Applications
- 1 External SN Client
- 1 External SN Server
- 1 SNeW Third-Party Application

These components are connected as the figure below shows:



5.1.2 Minimal Participation Guidelines

The ideal participation to properly test the enabler is:

- 3 SNeW clients
- 3 SNeW servers
- Access to an external SN Server and Client remotely or locally

5.1.3 Optimal TestFest Achievement Test Case Priority Guidelines

This list represents the current test cases prioritised that the participants should attempt to perform at the event. In order to facilitate maximum test coverage of the functionality of the enabler over a number of TestFests, this list may be modified by the IOP WG between test events to reflect the latest priorities. Therefore the ETS Test Cases listed below represent a subset of all the Test Cases for the Enabler that it is thought can be executed in a single test session at an OMA TestFest..

The list includes:

5.1.3.1 User Management

Description	Test Case Id	Priority
User account creation using telephone number	SNeW-1.0-int-1	A
User account creation using an account id	SNeW-1.0-int-2	A
User Account Deletion	SNeW-1.0-int-3	A
User Account Search	SNeW-1.0-int-4	B
User profile discovery	SNeW-1.0-int-5	A
Social Data Portability	SNeW-1.0-int-6	B

5.1.3.2 User Activity

Description	Test Case Id	Priority
User activities and reactions involving a single SNEW Server	SNeW-1.0-int-7	A
User activities and reactions involving multiple SNEW Servers	SNeW-1.0-int-8	A
Subscription-mode of activities and reactions	SNeW-1.0-int-9	B
Share of links when browsing external websites	SNeW-1.0-int-10	B
Usage of Push in own SNeW	SNeW-1.0-int-11	B
Usage of Push in another compliant SNeW	SNeW-1.0-int-12	B
Private messages create and retrieve	SNeW-1.0-int-13	A
Private messages update and deletion	SNeW-1.0-int-14	B

5.1.3.3 Device Specific

Description	Test Case Id	Priority
Application communication in SNEW Client and local cache	SNeW-1.0-int-15	A
Deletion and update of cache (contains optional features)	SNeW-1.0-int-16	B
Local queue management	SNeW-1.0-int-17	A

5.1.3.4 Gateway Specific

Description	Test Case Id	Priority
Association to External SNs	SNeW-1.0-int-18	B
Import and aggregation of activities from External SNs	SNeW-1.0-int-19	B
Cross-posting of activities towards selected External SNs	SNeW-1.0-int-20	B
Deletion of associations to External SNs	SNeW-1.0-int-21	B

5.1.3.5 Security

Description	Test Case Id	Priority
Privacy level	SNeW-1.0-int-22	A
User authentication and device applications authorization – credentials-based flow	SNeW-1.0-int-23	A

Description	Test Case Id	Priority
User authentication and device applications authorization – network-based flow	SNeW-1.0-int-24	A

5.1.3.6 Network API

Description	Test Case Id	Priority
Third-party Authorization	SNeW-1.0-int-25	B
Services and type of methods authorised to SNEW Third-party Applications	SNeW-1.0-int-26	B

5.2 Enabler Test Requirements

5.2.1 Test Infrastructure Requirements

The infrastructure required to test the enabler is TCP/IP connectivity between clients and servers and to external SNs that can be used for testing if not available locally and since are easily accessible remotely.

5.2.2 Enabler Execution Flow

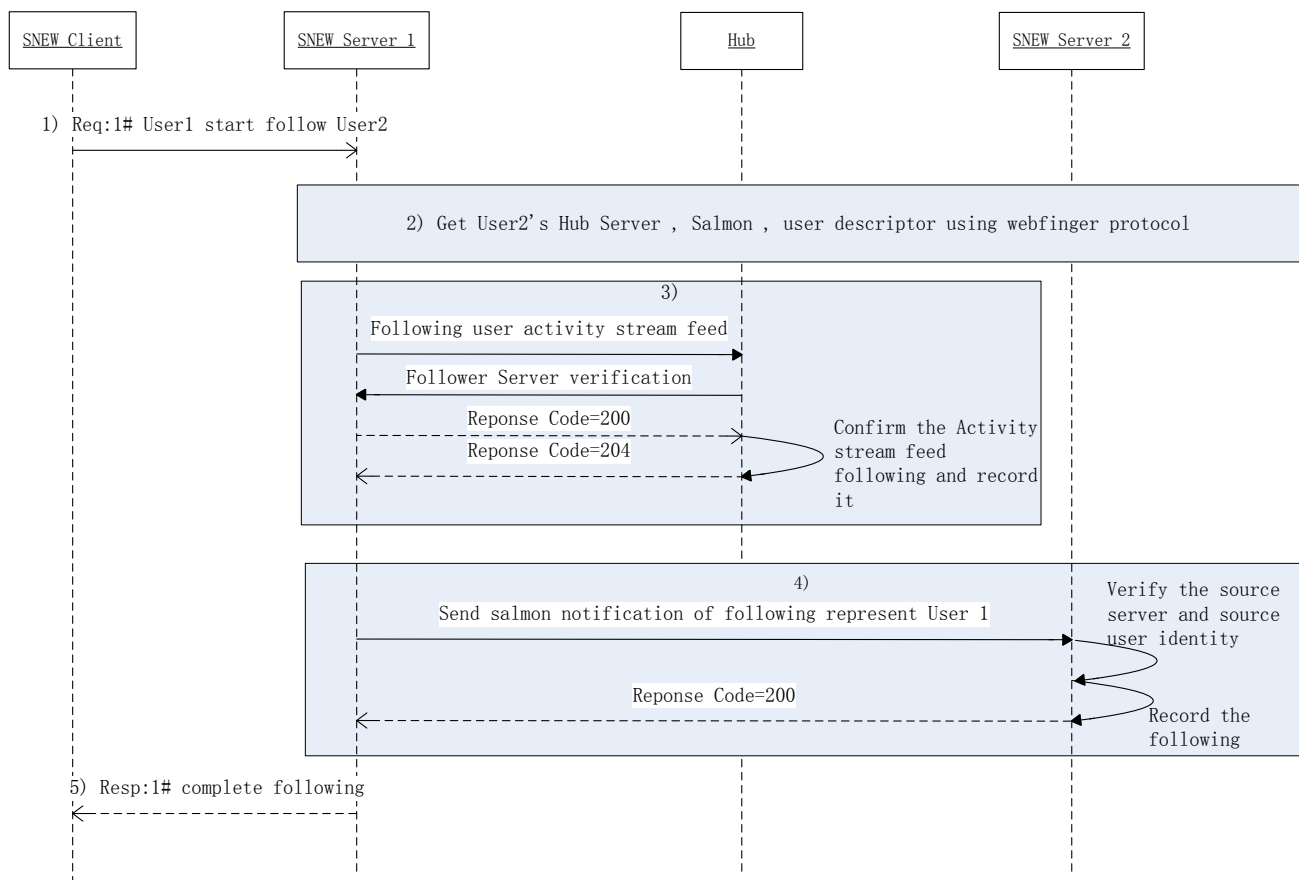


Figure 1: Example flow of cross domain subscription

<Editor Note: To be added later the most important flows and adapted to >

5.2.3 Test Content Requirements

It will be required multimedia sample content like jpeg images and mpeg videos.

5.2.4 Test Limitations

5.2.4.1 Physical

None

5.2.4.2 Resources

None identified so far

5.2.5 Test Restrictions

Restrictions to the testing might happen due to the availability of more than 1 SNeW server and external SN servers as some test cases will depend on the availability of them.

5.2.6 Test Tools

No test tool required. However the availability of HTTP, TCP/IP and other protocol trace tools are welcome, although not required.

5.2.6.1 Existing Tools to be Used

There are many existing trace tool for the relevant protocols that can be used. Wireshark is one open source good trace tool.

5.2.6.2 Test Tool Requirements

The only requirement is that the test tool shall not interfere in the communication between clients and servers.

5.2.7 Resources Required

As a minimum it will be requires a resource, eventually shared, to operate each client and server under test.

5.3 Tests to be Performed

The following sections describe the tests related to the formal TestFest validation activities.

5.3.1 Entry Criteria for TestFest

The following tests need to be performed and passed by implementations by members wishing to participate in the TestFest. This ensures minimal requisite capability of the implementations. The tests are defined in the ETS [SNeW-ETS] and any special comments are noted.

Test Case Id	Special Conditions
SNeW-1.0-int-1	User account creation using telephone number
SNeW-1.0-int-7	User activities and reactions involving a single SNEW Server
SNeW-1.0-int-8	User activities and reactions involving multiple SNEW Servers
SNeW-1.0-int-23	User authentication and device applications authorization – credentials-based flow

Table 1: Listing of Tests for Entry Criteria for TestFest

5.3.2 Testing to be Performed at TestFest

The following tests need to be performed to fully cover the range of capabilities of the enabler and defined protocols. These tests are to be covered in the TestFest. The tests are defined in the ETS [SNeW-ETS] and any special comments are noted.

- All the test cases from the SNEW 1.0 ETS

5.4 Enabler Test Reporting

5.4.1 Problem Reporting Requirements

The problem reports should be entered on the OMA PR tool at <http://www.oma-tech.org/pr/Frontpage.aspx>. The problems have to be first analysed by the IOP Champion and IOP BRO, then assigned to IOP, if a problem with the test specifications or to CD working group

5.4.2 Enabler Test Requirements

The normal reporting can be used for reporting the testing activities and results. No extraordinary requirement is necessary.

6. Alternative Validation Activities

The validation of the enabler can be done via test results achieved through normal test fests, via virtual test fests or bilateral test sessions.

Test results from events organised by other forums can be considered also relevant for the validation after analyses of CD and IOP BRO.

7. Approval Criteria

The SNeW 1.0 enabler can be put in the Approved state when:

- The Enabler has been tested successfully at 2 Test Fests or
- 3 clients and 2 servers have successfully run bilateral tests sessions and
- No open PRs exist.

7.1 Enabler Validation Test Cases

The following table should list the set of tests that are used for enabler validation.

Test Case Id	ETR Requirement Id	ETR Status	Notes
SNeW-1.0-int-1	UMG-001	<M>	
	UAC-006	<M>	
SNeW-1.0-int-2	UMG-001	<M>	
	UAC-007	<M>	
SNeW-1.0-int-3	UMG-001	<M>	
	SEC-003	<M>	
SNeW-1.0-int-5	UMG-005	<M>	
SNeW-1.0-int-7	UAC-001	<M>	
	UAC-002	<M>	
	UAC-003	<M>	
	UAC-005	<M>	
SNeW-1.0-int-8	UAC-001	<M>	
	UAC-002	<M>	
	UAC-003	<M>	
	UAC-004	<M>	
	UAC-005	<M>	
SNeW-1.0-int-13	UAC-012	<M>	
SNeW-1.0-int-15	DEV-001	<M>	
	DEV-002	<M>	
	DEV-003	<M>	
	DEV-004	<M>	
SNeW-1.0-int-17	DEV-006	<M>	
SNeW-1.0-int-22	SEC-001	<M>	
	SEC-004	<M>	
SNeW-1.0-int-23	SEC-002	<M>	
	SEC-003	<M>	
SNeW-1.0-int-24	SEC-002	<M>	
	SEC-003	<M>	

Table 2: Enabler Validation Test Cases

7.2 Non-Covered ETR Requirements

Any restrictions, limitations and/or infeasibility of testing of the ETR requirements should be stated in this section.

If new information about limitations and/or infeasibility of testing of any of the ETR requirements is discovered, this section should be updated accordingly.

ETR Requirement Id	ETR Status	Notes
GMG-001	<M>	This test requirement is a sub-case of the activities test cases and is not relevant for interoperability validation.

Table 3: Non-Covered ETR Requirements

Appendix A. Change History

(Informative)

A.1 Approved Version History

Reference	Date	Description
		No prior version

A.2 Draft/Candidate Version 1.0 History

Document Identifier	Date	Sections	Description
Draft Versions OMA-EVP-SNeW-V1_0	06 Jul 2012	All	First draft
	19 Oct 2012	5.1	Incorporated agreed CR: OMA-IOP-BRO-2012-0051- CR_SNEW_1.0_Correction_Diagram_EVP
	19 Feb 2013	5.1.1, 5.1.3, 5.3, 7.1, 7.2,	Incorporated agreed CRs: OMA-IOP-BRO-2013-0009R01-CR_Addition_new_test_objects_EVP OMA-IOP-BRO-2013-0010R02-CR_Optimal_test_cases_EVP OMA-IOP-BRO-2013-0011R01-CR_Test_cases_at_test_fest_EVP OMA-IOP-BRO-2013-0012R01-CR_Validation_test_cases_EVP Re-numbering of tables in the whole document Harmonization of hyperlink styles in normative reference section
	03 Sep 2013	2.1	Incorporated agreed CR: OMA-IOP-BRO-2013-0039R01-CR_Update_ETS_reference
	04 Sep 2013	2.1	Correction of a typo in OMA Process reference
Candidate Version OMA-EVP-SNeW-V1_0	17 Sep	N/A	Status changed to Candidate by TP TP Ref#OMA-TP-2013-0269- INP_SNeW_V1_0_EVP_for_Candidate_approval