



**Specification Information Note**  
**WAP-167\_103-ServiceInd-20010926-a**  
Version 26-Sep-2001

---

for

Wireless Application Protocol  
WAP-167-ServiceInd-20010731-a  
Service Indication  
Version 31-Jul-2001

A list of errata and updates to this document is available from the WAP Forum™ Web site, <http://www.wapforum.org/>, in the form of SIN documents, which are subject to revision or removal without notice.

© 2001, Wireless Application Protocol Forum, Ltd. All Rights Reserved. Terms and conditions of use are available from the WAP Forum™ Web site (<http://www.wapforum.org/what/copyright.htm>).

© 2001, Wireless Application Forum, Ltd. All rights reserved.

Terms and conditions of use are available from the WAP Forum™ Web site at <http://www.wapforum.org/what/copyright.htm>.

You may use this document or any part of the document for internal or educational purposes only, provided you do not modify, edit or take out of context the information in this document in any manner. You may not use this document in any other manner without the prior written permission of the WAP Forum™. The WAP Forum authorises you to copy this document, provided that you retain all copyright and other proprietary notices contained in the original materials on any copies of the materials and that you comply strictly with these terms. This copyright permission does not constitute an endorsement of the products or services offered by you.

The WAP Forum™ assumes no responsibility for errors or omissions in this document. In no event shall the WAP Forum be liable for any special, indirect or consequential damages or any damages whatsoever arising out of or in connection with the use of this information.

WAP Forum™ members have agreed to use reasonable endeavors to disclose in a timely manner to the WAP Forum the existence of all intellectual property rights (IPR's) essential to the present document. The members do not have an obligation to conduct IPR searches. This information is publicly available to members and non-members of the WAP Forum and may be found on the "WAP IPR Declarations" list at <http://www.wapforum.org/what/ipr.htm>. Essential IPR is available for license on the basis set out in the schedule to the WAP Forum Application Form.

No representations or warranties (whether express or implied) are made by the WAP Forum™ or any WAP Forum member or its affiliates regarding any of the IPR's represented on this list, including but not limited to the accuracy, completeness, validity or relevance of the information or whether or not such rights are essential or non-essential.

This document is available online in PDF format at <http://www.wapforum.org/>.

Known problems associated with this document are published at <http://www.wapforum.org/>.

Comments regarding this document can be submitted to the WAP Forum™ in the manner published at <http://www.wapforum.org/>.

## Contents

|   |          |
|---|----------|
| <b>1. SCOPE .....</b>                     | <b>4</b> |
| <b>2. NOTATION.....</b>                   | <b>4</b> |
| <b>3. ERROR IN FIGURE .....</b>           | <b>5</b> |
| 3.1 CHANGE CLASSIFICATION.....            | 5        |
| 3.2 CHANGE SUMMARY .....                  | 5        |
| 3.3 CHANGE DESCRIPTION.....               | 5        |
| <b>4. MINOR CLERICAL CORRECTION .....</b> | <b>7</b> |
| 4.1 CHANGE CLASSIFICATION.....            | 7        |
| 4.2 CHANGE SUMMARY .....                  | 7        |
| 4.3 CHANGE DESCRIPTION.....               | 7        |
| <b>5. SCR TABLE CORRECTIONS .....</b>     | <b>8</b> |
| 5.1 CHANGE CLASSIFICATION.....            | 8        |
| 5.2 CHANGE SUMMARY .....                  | 8        |
| 5.3 CHANGE DESCRIPTION.....               | 8        |

## 1. Scope

This document provides changes and corrections to the following document files:

- WAP-167-ServiceInd-20010731-a

It includes changes from the following change requests:

- CR-WAP-167-20010907-ERICSSON-1

## 2. Notation

In the subsections describing the changes new text is underlined. Removed text has ~~striketrough~~ marks. The presented text is copied from the specification. Text that is not presented is not affected at all. The change descriptions may also include editor's notes similar to the one below. The notes are not part of the actual changes and must not be included in the changed text.

**Editor's note:** Framed notes like these only clarify where and how the changes shall be applied.

### 3. Error in Figure

#### 3.1 Change Classification

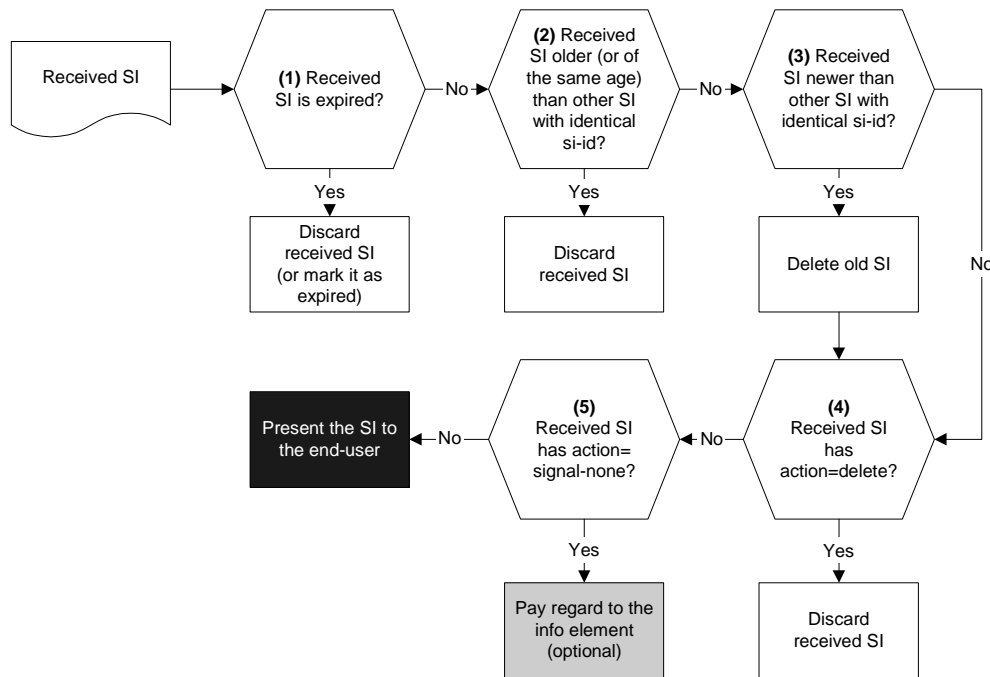
Class 2 – Bug Fixes

#### 3.2 Change Summary

This change amends figure 2 where box 2 and 3 are not in line with the (normative) text below the figure with respect to handling of a received SI with a created attribute value equal to another SI's created attribute value.

#### 3.3 Change Description

**Editor's note:** In section 6.2, replace figure 2 with the following one ("(or of the same age)" moved from box 3 to box 2):



**Editor's note:** In section 6.2, move description of how SIs with identical `created` attribute values should be handled from bullet 3 to bullet 2 to align the text with the figure (note that this does not imply any changed behaviour):

## 2. Handling of out of order delivery

The `created` attribute is used to determine the age of the SI in order to resolve race conditions between SIs that arrive in an order different from the one in which the push initiator sent them. If the value of the `created` attribute in a received SI is older than, or identical to, this attribute value in any other SI with identical `si-id`, the received SI MUST be silently discarded.

SIs are subject to this operation only if both criteria stated below are fulfilled:

- the `created` attribute has an explicitly assigned value
- the `si-id` attribute or the `href` attribute, or both, has an explicitly assigned value

## 3. Replacement

The `created` attribute is used to determine the age of an SI, which combined with the value of the `si-id` attribute provides the information needed for replacement. A received SI containing an `si-id` identical to the `si-id` of any older SI MUST replace the old SI. ~~If the received SI and another SI with identical `si-id` contain identical values for the `created` attribute, the received SI MUST be silently discarded.~~

SIs are subject to this operation only if both criteria stated below are fulfilled:

- the `created` attribute has an explicitly assigned value

the `si-id` attribute or the `href` attribute, or both, has an explicitly assigned value

## 4. Minor clerical correction

### 4.1 Change Classification

Class 3 – Clerical Corrections

### 4.2 Change Summary

Section 8.2.1.1 mentions "WML tokenisation" instead of "SI tokenisation".

### 4.3 Change Description

**Editor's note:** Apply the following changes in section 8.2.1.1

The ~~WML-SI~~ tokenisation process SHOULD validate that attribute values defined as %DateTime; follow the syntax defined in section 5.2.1.

## 5. SCR Table Corrections

### 5.1 Change Classification

Class 3 – Clerical Corrections

### 5.2 Change Summary

The following changes amends erroneous SCR entries and updates the reference to the "Specification of WAP Conformance Requirements" document.

### 5.3 Change Description

**Editor's note:** Apply the following changes in section 2.1

~~[CONF] — Specification of WAP Conformance Requirements, 15 September 2000, WAP Forum Ltd,  
URL: <http://www.wapforum.org/>~~

[CREQ] "Specification of WAP Conformance Requirements". WAP Forum™. WAP-221-CREQ-20010425-a.  
URL: <http://www.wapforum.org/>

**Editor's note:** Apply the following changes in Appendix A.1.2

|              |                           |     |   |                       |
|--------------|---------------------------|-----|---|-----------------------|
| SI-CSE-C-001 | UTF-8 Encoding.           | 5.1 | O | WML- <del>C</del> -01 |
| SI-CSE-C-002 | UTF-16 Encoding.          | 5.1 | O | WML- <del>C</del> -02 |
| SI-CSE-C-003 | UCS-4 Encoding.           | 5.1 | O | WML- <del>C</del> -03 |
| SI-CSE-C-004 | Other character encoding. | 5.1 | O | WML- <del>C</del> -04 |

**Editor's note:** Apply the following changes in Appendix A.2.2

|              |                |                         |   |                         |
|--------------|----------------|-------------------------|---|-------------------------|
| SI-VAL-S-003 | SI validation. | <a href="#">8.2.1.1</a> | O | <del>SI-DOC-S-001</del> |
|--------------|----------------|-------------------------|---|-------------------------|